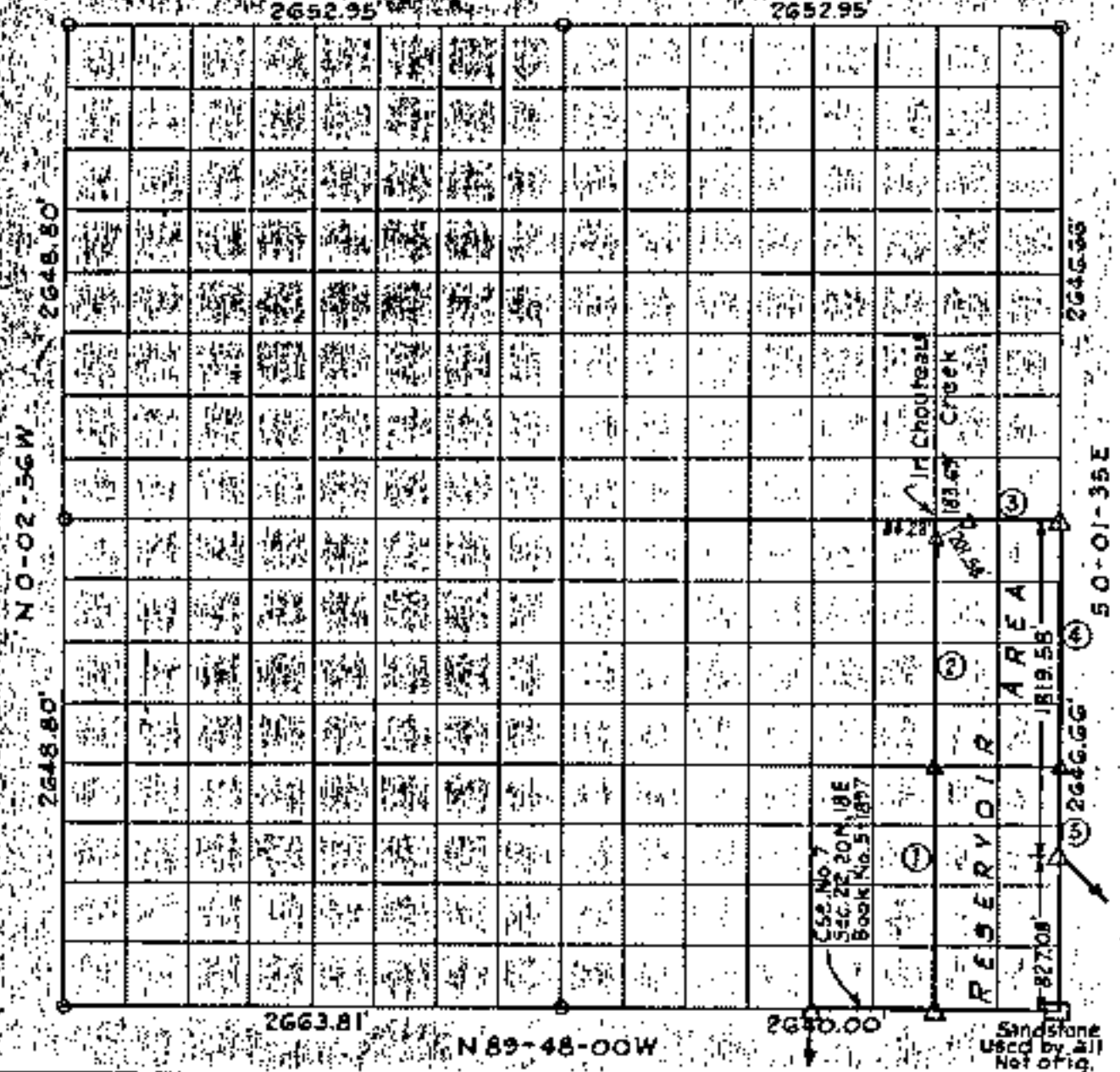


PARTIAL BOUNDARY SURVEYS  
**FORT GIBSON LAKE, AREA "I"**  
**OKLAHOMA**

Performed under Contract Number DACW 56-76-C-0113  
 SEC. 15, T. 20N., R. 18E., COUNTY, MAYES

589-45-14 E



Course No.	Distance	Bearing	Course No.	Distance	Bearing
1	1323.26'	N 0° 03' 41" W			
2	1323.47'	N 0° 03' 41" W			
3	661.62'	S 89° 46' 37" E			
4	1323.33'	S 0° 01' 35" E			
5	496.25'	S 0° 01' 35" E			

Certificate of Survey

I hereby certify that the above plat is a true and correct representation of the survey made in Section 15, T. 20N., R. 18E., Mayes County, Oklahoma.

*Charles J. Finklea*  
 Charles J. Finklea

Scale: 1:10,000  
 Date: Feb.-July, 1976  
 Field Book No. 5-1896

Sheet 1 of 2

Legend

- ▲ Monument
- Orig. Corner
- Iron Pin
- ▲ Mon by O.H.D.

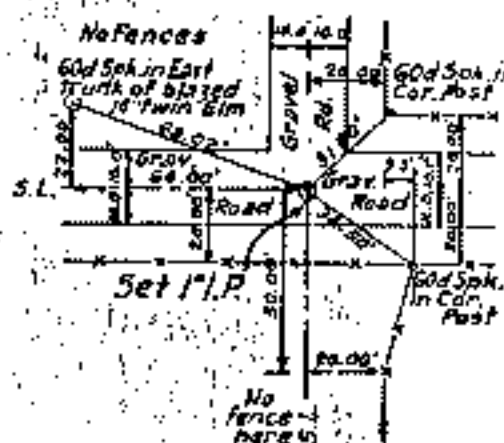
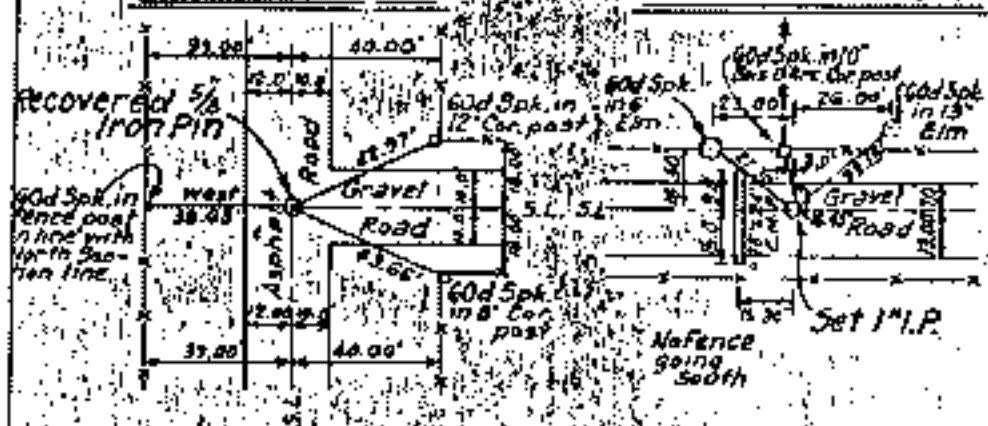


**FORT GIBSON LAKE, AREA "I"**  
**OKLAHOMA**  
 SECTION AND QUARTER SECTION CORNER  
 REFERENCES FOR  
SEC. 15, T. 20N., R. 18E., COUNTY MAYES

**N.W. CORNER**

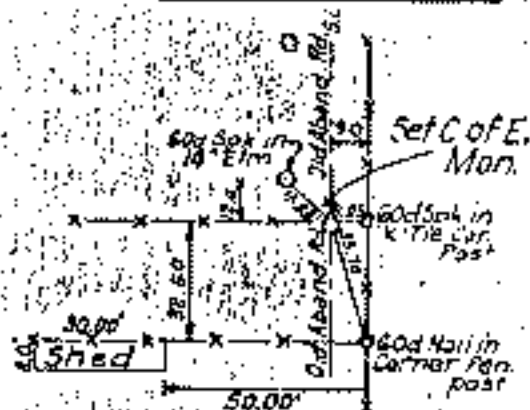
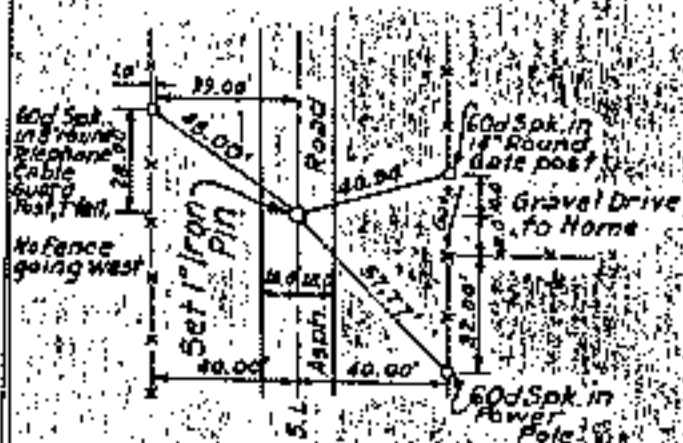
**NORTH 1/4 COR.**

**N.E. CORNER**



**WEST 1/4 COR.**

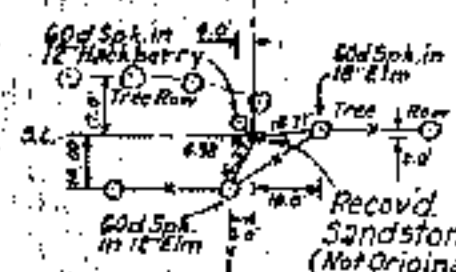
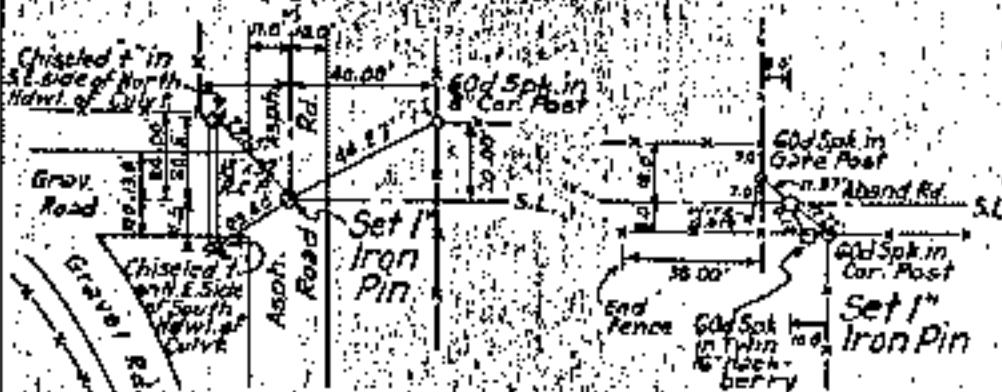
**EAST 1/4 COR.**



**S.W. CORNER**

**SOUTH 1/4 COR.**

**S.E. CORNER**



**Certificate of Survey**

I hereby certify that the above plat is a true and correct representation of the survey made in Section 15, T. 20N., R. 18E., Mayes County, Oklahoma.

*Charles J. Finklea*  
 Charles J. Finklea  
 Registered Land Surveyor No. 25

Sheet 2 of 2

Scale: 1" = 50'  
 Date: Feb.-July, 1977  
 Field Book No. 5-18

**Legend**

- ▲ Monument
- Orig. Corner
- Iron Pin
- ▲ Mon. by O.H.