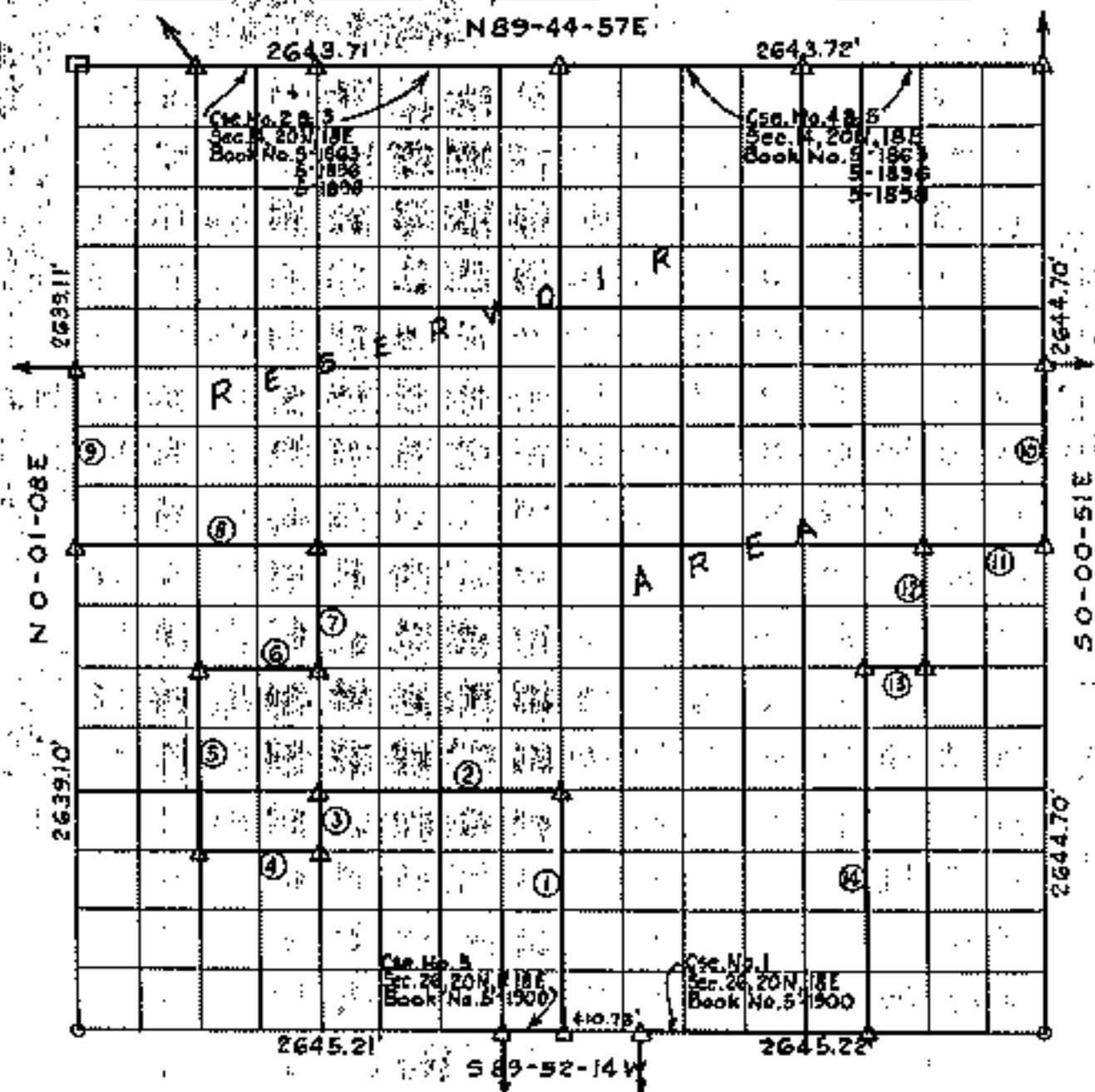


PARTIAL BOUNDARY SURVEYS  
 FORT GIBSON LAKE, AREA "I"  
 OKLAHOMA

Performed under Contract Number DACW 56-76-C-0113  
 SEC. 23, T. 20 N., R. 18 E., COUNTY MAYES



Course No.	Distance	Bearing	Course No.	Distance	Bearing
1	1320.79'	N 0° 00' 08" E	12	661.46'	S 0° 00' 37" E
2	1322.37'	S 89° 50' 25" W	13	330.58'	S 89° 49' 30" W
3	330.06'	S 0° 00' 38" W	14	1982.74'	S 0° 00' 30" E
4	661.23'	S 89° 50' 52" W			
5	989.83'	N 0° 00' 53" E			
6	661.16'	N 89° 49' 30" E			
7	660.13'	N 0° 00' 38" E			
8	1323.23'	S 89° 48' 35" W			
9	989.67'	N 0° 01' 08" E			
10	991.76'	S 0° 00' 51" E			
11	661.02'	S 89° 48' 35" W			

Certificate of Survey

I hereby certify that the above plat is a true and correct representation of the survey made in Section 23, T. 20 N., R. 18 E., Mayes County, Oklahoma.

Sheet 1 of 2

Legend

- Δ Monument
- Orig. Corner
- Iron Pin

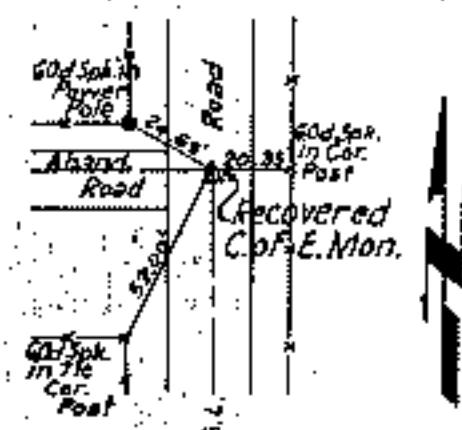
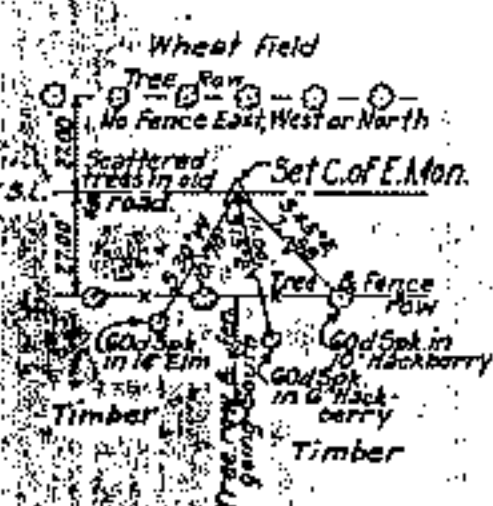
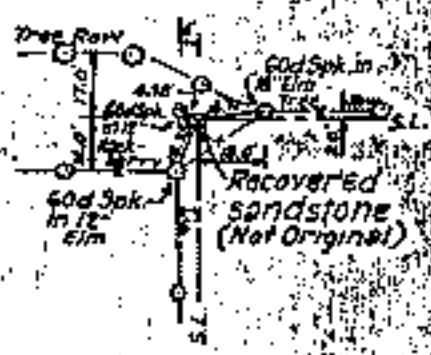
Scale: - 1:10,000  
 Date: - Feb.-July, 1974

**FORT GIBSON LAKE, AREA "I"**  
**OKLAHOMA**  
**SECTION AND QUARTER SECTION CORNER**  
**REFERENCES FOR**  
**SEC. 23, T. 20N., R. 18E., COUNTY MAYES**

N.W. CORNER

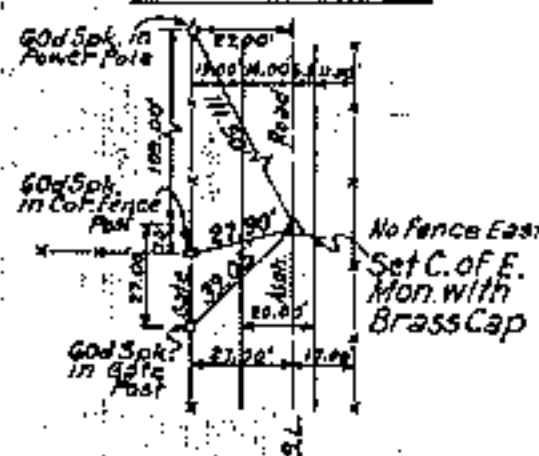
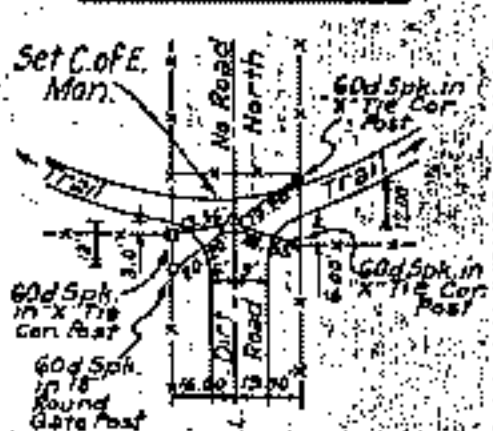
NORTH 1/4 COR.

N.E. CORNER



WEST 1/4 COR.

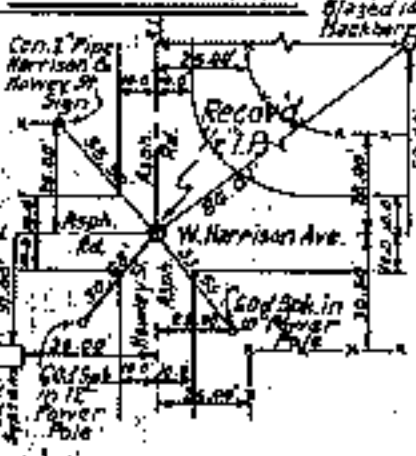
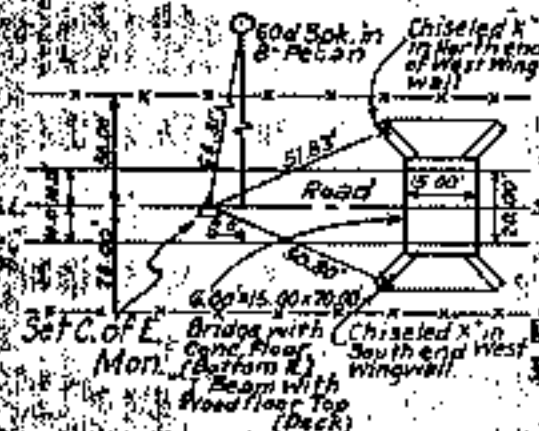
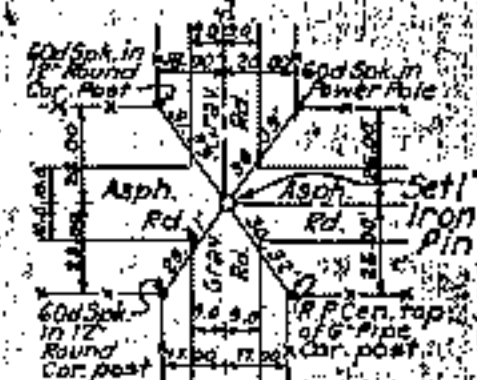
EAST 1/4 COR.



S.W. CORNER

SOUTH 1/4 COR.

S.E. CORNER



Certificate of Survey

I hereby certify that the above plat is a true and correct representation of the survey made in Section 23, T. 20N., R. 18E., Mayes County, Oklahoma.

*Charles J. Finklea*  
 Charles J. Finklea

Sheet 2 of 2

Scale: 1" = 50'  
 Date: Feb. July, 1976  
 Field Book No. 5-1898

Legend

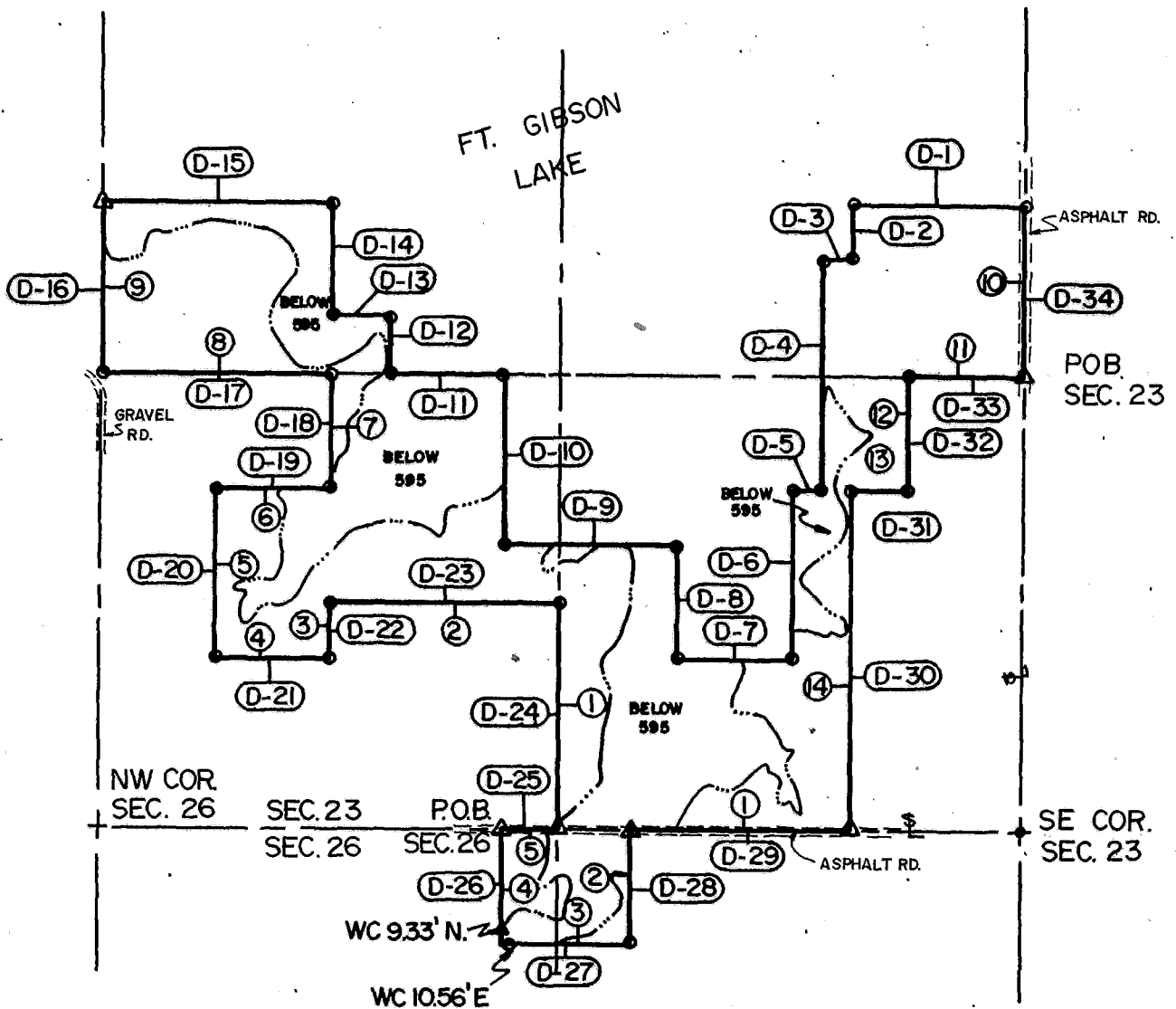
- △ Monument
- Orig. Corner
- Iron Pin



# DISPOSAL TRACT SURVEY PLAT FT. GIBSON DAM & RESERVOIR LAKE FT. GIBSON, OKLA.

SEC. 23&26, T 20 N, R 18 E, COUNTY MAYES

PARCEL NO. 63 Performed Under Contract No. DACA56-88-D-0050



- (D-1) DISPOSAL BNDRY. CRS.
- (2) ORIGINAL BNDRY. CRS.

TOTAL AREA: 179.19 AC.  
FLOWAGE ESMNT.: 71.37 AC.



SCALE 1" = 1000'

Course No.	Distance	Bearing	Course No.	Distance	Bearing
D-1	991.56	S 89°47'12"W	D-14	660.13	N 00°00'38"E
D-2	330.56	S 00°00'22"E	D-15	1322.44	S 89°46'45"W
D-3	165.25	S 89°50'05"W	D-16	989.98	S 00°00'03"W
D-4	1321.78	S 00°00'31"E	D-17	1322.27	N 89°47'21"E
D-5	165.29	S 89°40'26"W	D-18	660.13	S 00°00'39"W
D-6	991.37	S 00°00'30"E	D-19	661.15	S 89°49'22"W
D-7	661.23	S 89°50'52"E	D-20	989.81	S 00°00'55"W
D-8	660.60	N 00°00'16"W	D-21	661.23	N 89°50'49"E
D-9	992.31	S 89°49'48"W	D-22	330.05	N 00°00'38"E
D-10	990.99	N 00°00'16"E	D-23	1322.28	N 89°50'25"E
D-11	661.21	S 89°47'20"W	D-24	1320.42	S 00°00'42"E
D-12	330.07	N 00°00'31"E	D-25	330.39	S 89°52'14"W
D-13	330.55	S 89°47'24"W	* SEE SHT. 2 of 5 FOR D-26 thru D-34		

Field Book No. 5-1898 Date JAN., 1989

**CERTIFICATE OF SURVEY ENTZ ENGINEERING & ASSOCIATES, INC. AND  
HUFFMAN SURVEYING CO., INC.**

Above Plat is a True and Correct  
Representation of the Survey  
Made in Sec 23 & 26, T 20 N, R 18 E.

A Joint Venture  
for

U.S. ARMY ENGINEER DISTRICT, TULSA  
CORPS OF ENGINEERS

— LEGEND —

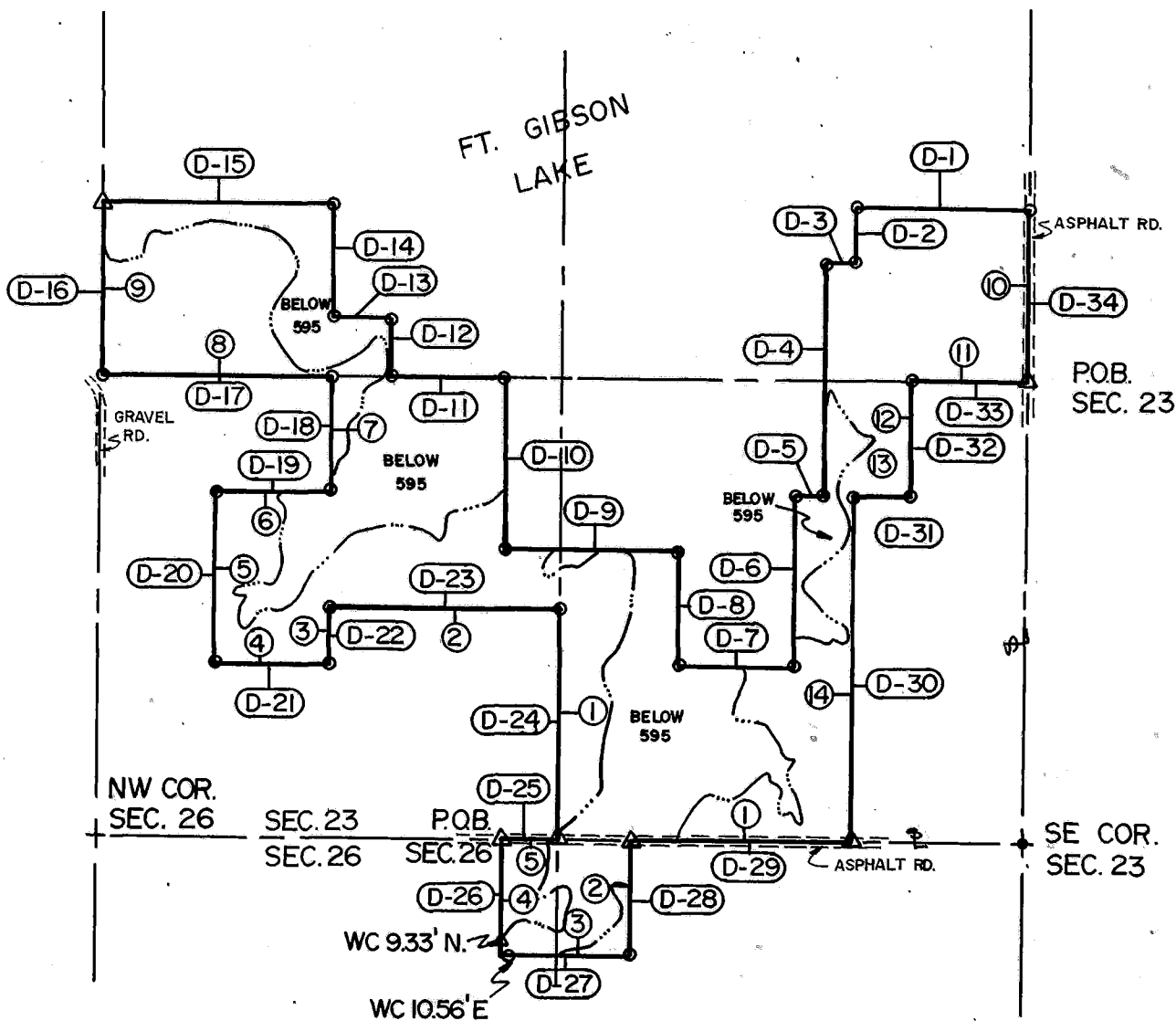
- Δ MONUMENT
- ORIGINAL CORNER
- IRON PIN/CAP

*Ron Huffman*  
Ron Huffman L.S. 1020

**DISPOSAL TRACT SURVEY PLAT  
FT. GIBSON DAM & RESERVOIR  
LAKE FT. GIBSON, OKLA.**

SEC. 23&26, T 20 N, R 18 E, COUNTY MAYES

PARCEL NO. 63 Performed Under Contract No. DACA56-88-D-0050



- ① DISPOSAL BNDRY. CRS.
- ② ORIGINAL BNDRY. CRS.

TOTAL AREA: 179.19 AC.  
FLOWAGE ESMNT.: 71.37 AC.



SCALE 1" = 1000'

Course No.	Distance	Bearing	Course No.	Distance	Bearing
D-26	663.23	S 00°00'51"W			
D-27	739.94	N 89°50'39"E			
D-28	662.89	N 00°07'10"E			
D-29	1242.53	N 89°51'55"E			
D-30	1982.18	N 00°00'08"E			
D-31	330.58	N 89°49'31"E			
D-32	661.46	N 00°00'38"W			
D-33	661.03	N 89°48'33"E			
D-34	991.77	N 00°00'31"W			

Field Book No. 5-1898 Date JAN., 1989

**CERTIFICATE OF SURVEY** ENTZ ENGINEERING & ASSOCIATES INC. AND  
I Hereby Certify That The HUFFMAN SURVEYING CO., INC.  
Above Plat is a True and Correct  
Representation of the Survey  
Made in Sec 23&26 T 20 N, R 18 E.  
A Joint Venture  
for

U.S. ARMY ENGINEER DISTRICT, TULSA  
CORPS OF ENGINEERS

— LEGEND —

- △ MONUMENT
- ORIGINAL CORNER
- IRON PIN/CAP

Rob Huffman L.S. 1020