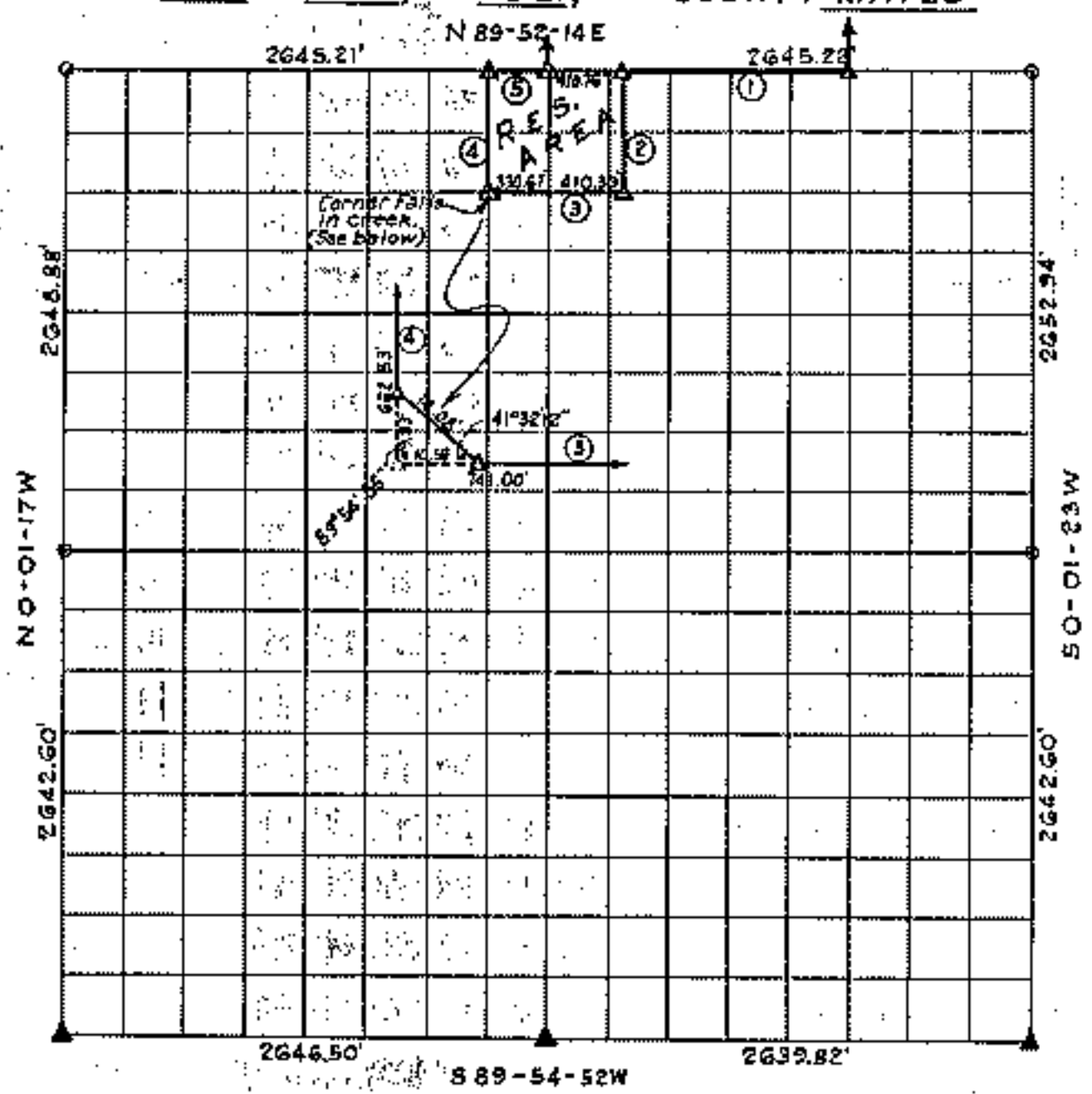


PARTIAL BOUNDARY SURVEYS  
**FORT GIBSON LAKE, AREA "I"**  
 OKLAHOMA

Performed under Contract Number DACW56-76-C-0113  
 SEC. 26, T. 20N., R. 18E., COUNTY MAYES



Course No.	Distance	Bearing	Course No.	Distance	Bearing
1	1242.50'	589°52'14" W			
2	662.81'	S 0°01'34" E			
3	741.00'	589°52'54" W			
4	662.53'	N 0°02'01" W			
5	330.65'	N 89°52'14" E			

Certificate of Survey

I hereby certify that the above plat is a true and correct representation of the survey made in Section 26, T. 20N., R. 18E., Mayes County, Oklahoma.

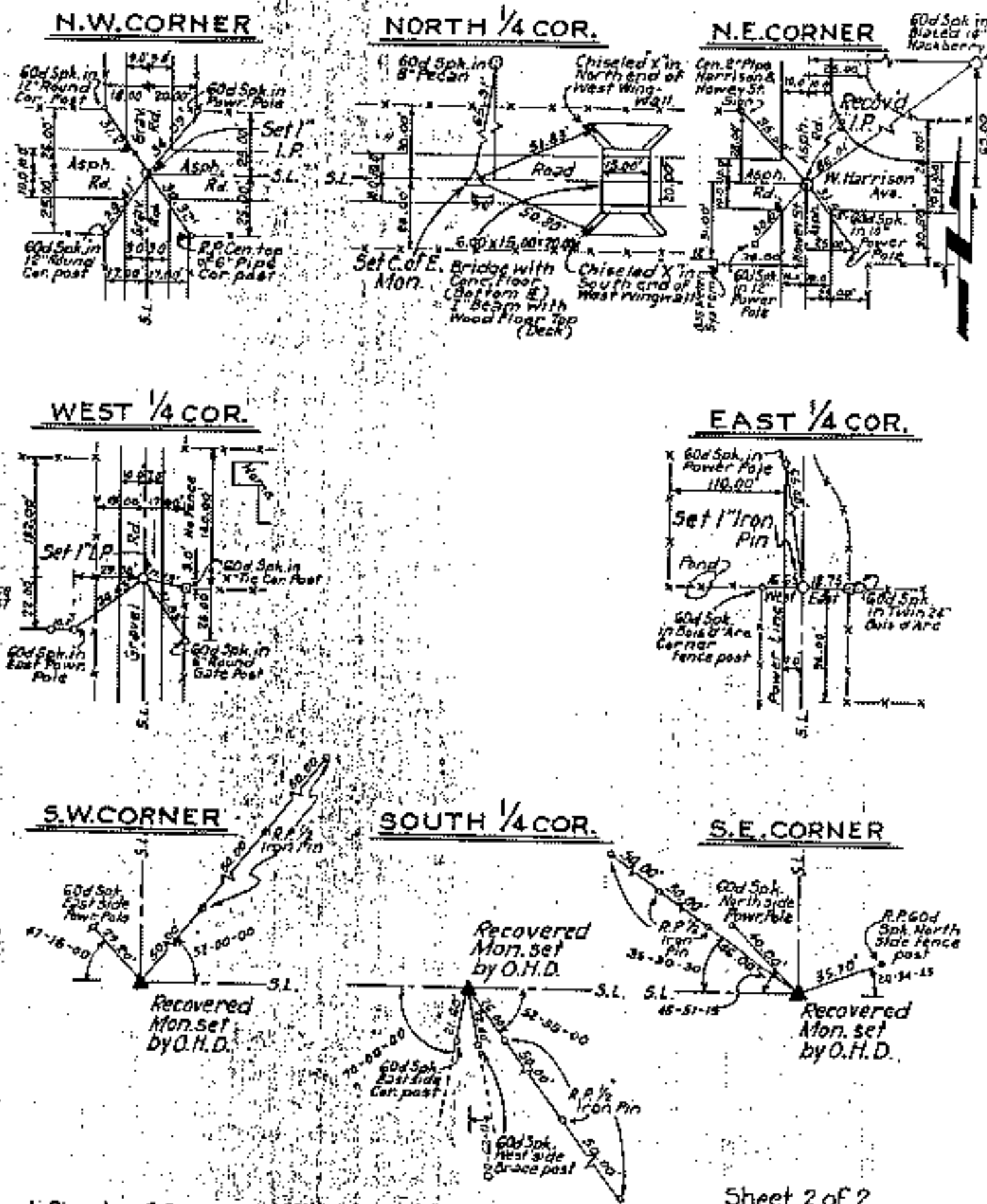
*Charles J. Finklea*  
 Charles J. Finklea

Scale: 1:10,000  
 Date: Feb.-July, 1976  
 Field Book No. 5-1900

Sheet 1 of 2  
Legend

- Δ Monument
- Orig. Corner
- Iron Pin
- ▲ by O.H.D.

**FORT GIBSON LAKE, AREA "I"**  
**OKLAHOMA**  
**SECTION AND QUARTER SECTION CORNER**  
**REFERENCES FOR**  
**SEC. 26, T. 20N., R. 18E., COUNTY MAYES**



Certificate of Survey  
 I hereby certify that the above plat is a true and correct representation of the survey made in Section 26, T. 20N., R. 18E., Mayes County, Oklahoma.

*Charles J. Finklea*  
 Charles J. Finklea



Sheet 2 of 2  
 Scale: 1" = 50'  
 Date: Feb.-July, 1976  
 Field Book No. 5-1900

- Legend
- △ Monument
  - Orig. Corner
  - Iron Pin