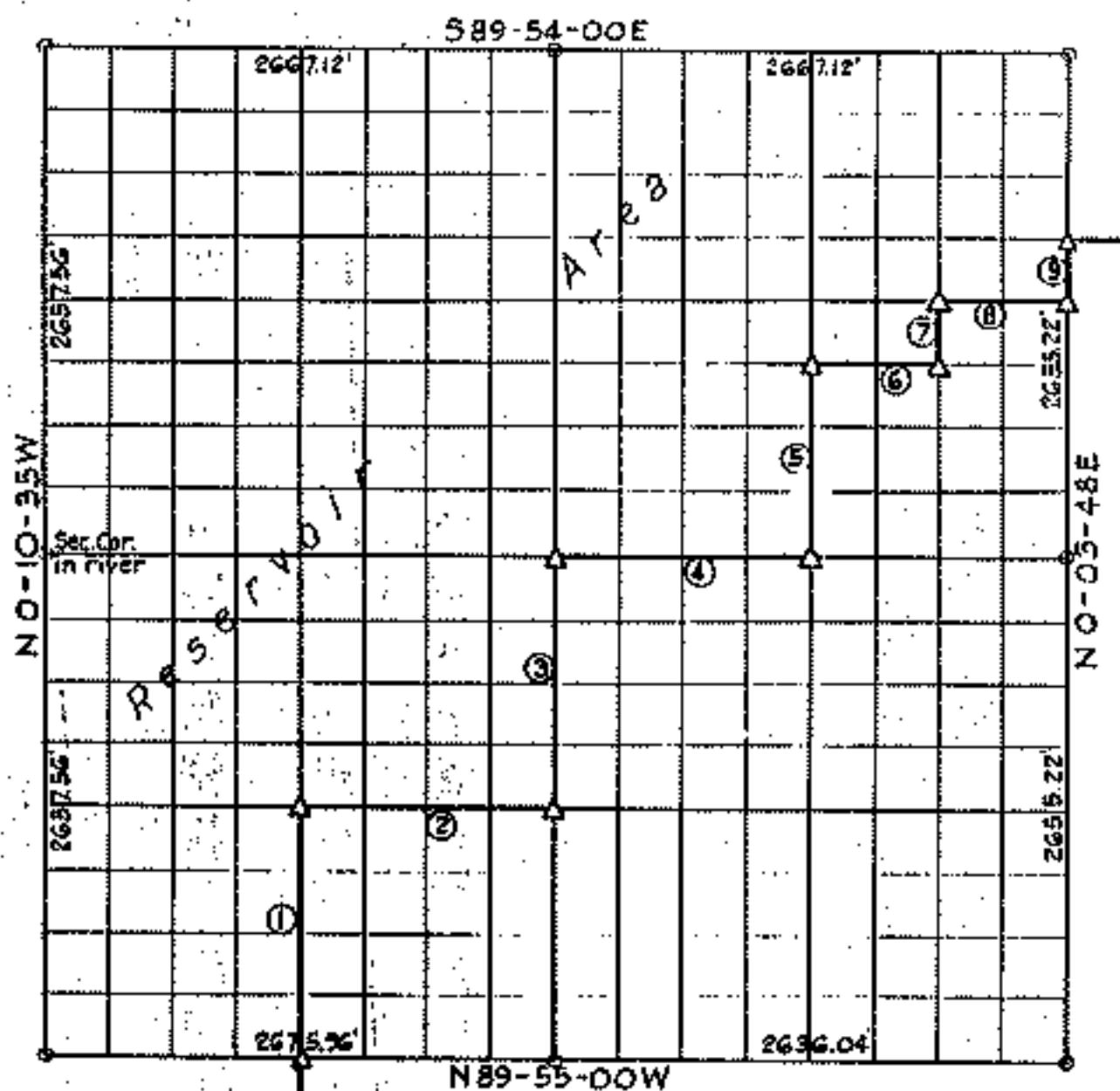


FORT MONROE LAKE
AREA 'F'

Performed under Contract Number DACW 56-73-C-0230

SEC. 12 T. 20N. R. 19E. COUNTY MAYES



Course No.	Distance	Bearing	Course No.	Distance	Bearing
1	1320.50	89° 00' 13" 26"			
2	1136.30	89° 00' 28" 15"			
3	1320.32	89° 00' 16" 10"			
4	1326.76	89° 00' 23" 30"			
5	994.24	89° 00' 22" 15"			
6	664.35	89° 00' 22" 28"			
7	331.94	89° 00' 22" 11"			
8	664.24	89° 00' 22" 25"			
9	331.50	89° 00' 23" 10"			

Book No. 5-1207 Date: October, 1973

I, Charles J. Finkler, hereby certify that the above plot is a true and correct representation of the survey made in Section 12, T. 20N., R. 19E.

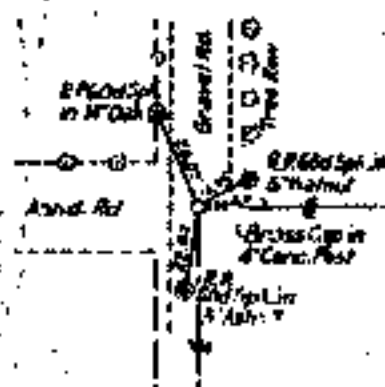
- LEGEND**
- △ Monument
 - Original Stone
 - Iron Pin
 - ▲ Mon. by O.H.D.

Charles J. Finkler
Registered Land Surveyor No. 35

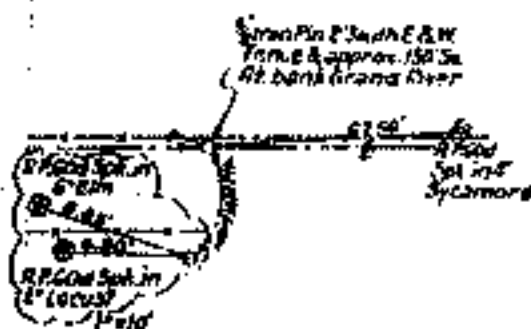
AREA "I"

SECTION AND QUARTER SECTION CORNER REFERENCES FOR SECTION 12, T.20N., R.19E., MAYES CO.

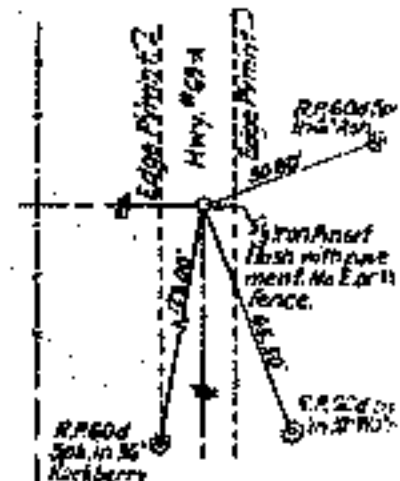
N.W. SECTION CORNER



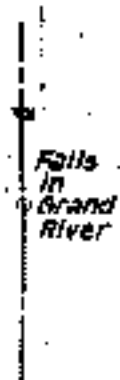
NO. 1/4 CORNER



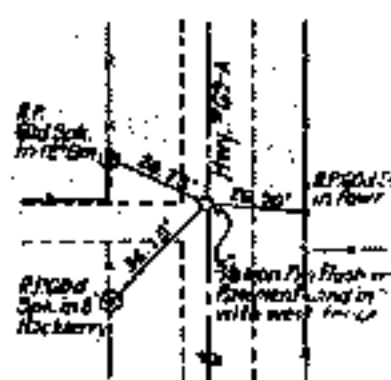
N. E. SECTION CORNER



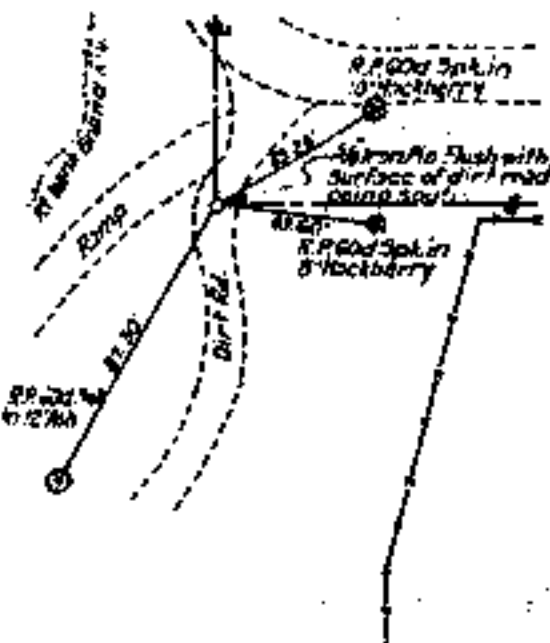
WEST 1/4 CORNER



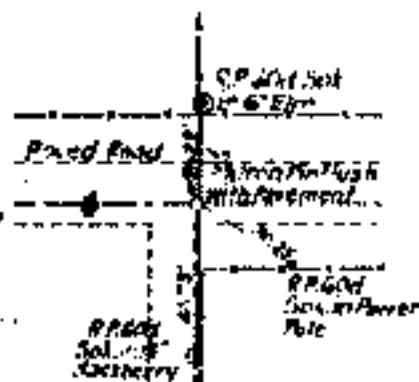
EAST 1/4 CORNER



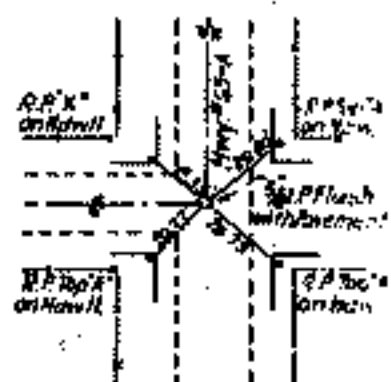
SW. SECTION CORNER



SO. 1/4 CORNER



S.E. SECTION CORNER

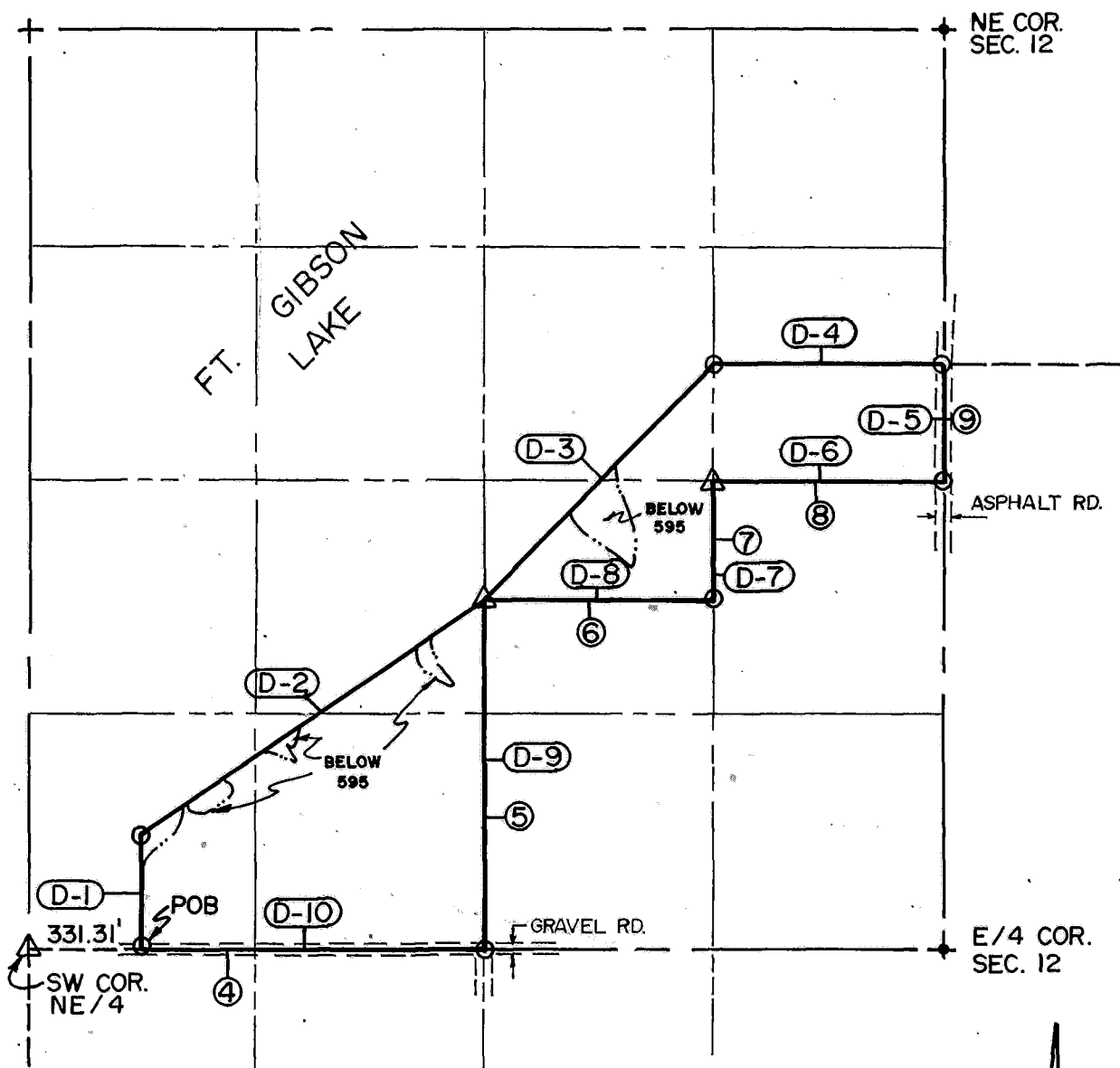


Scale: 1" = 50'
Date: June - October 1973
Field Book No. 5-1867

**DISPOSAL TRACT SURVEY PLAT
FT. GIBSON DAM & RESERVOIR
LAKE FT. GIBSON, OKLA.**

SEC. 12 , T 20 N , R 19 E , COUNTY MAYES

PARCEL NO. 37 Performed Under Contract No. DACA56-88-D-0050



- (D-1) DISPOSAL BNDRY. CRS.
- (4) ORIGINAL BNDRY. CRS.

TOTAL AREA: 25.30 AC.
FLOWAGE ESMNT.: 0.82 AC.

N
SCALE 1"=500'

Course No.	Distance	Bearing	Course No.	Distance	Bearing
D-1	332.18	N 00°14'46" W			
D-2	1193.36	N 56°24'06" E			
D-3	937.99	N 45°05'42" E			
D-4	665.67	S 89°52'03" E			
D-5	331.89	S 00°05'00" W			
D-6	664.88	N 89°50'30" W			
D-7	332.32	S 00°00'43" W			
D-8	664.60	N 89°50'55" W			
D-9	994.93	S 00°08'44" E			
D-10	995.10	N 89°51'44" W			

Field Book No. 5-1867 Date JAN., 1989

CERTIFICATE OF SURVEY ENTZ ENGINEERING & ASSOCIATES INC. AND
I Hereby Certify That The HUFFMAN SURVEYING CO., INC.
Above Plat is a True and Correct Representation of the Survey
Made in Sec. 12 , T 20 N , R 19 E .
A Joint Venture
for
U.S. ARMY ENGINEER DISTRICT, TULSA
CORPS OF ENGINEERS

— LEGEND —
Δ MONUMENT
□ ORIGINAL CORNER
○ IRON PIN/CAP