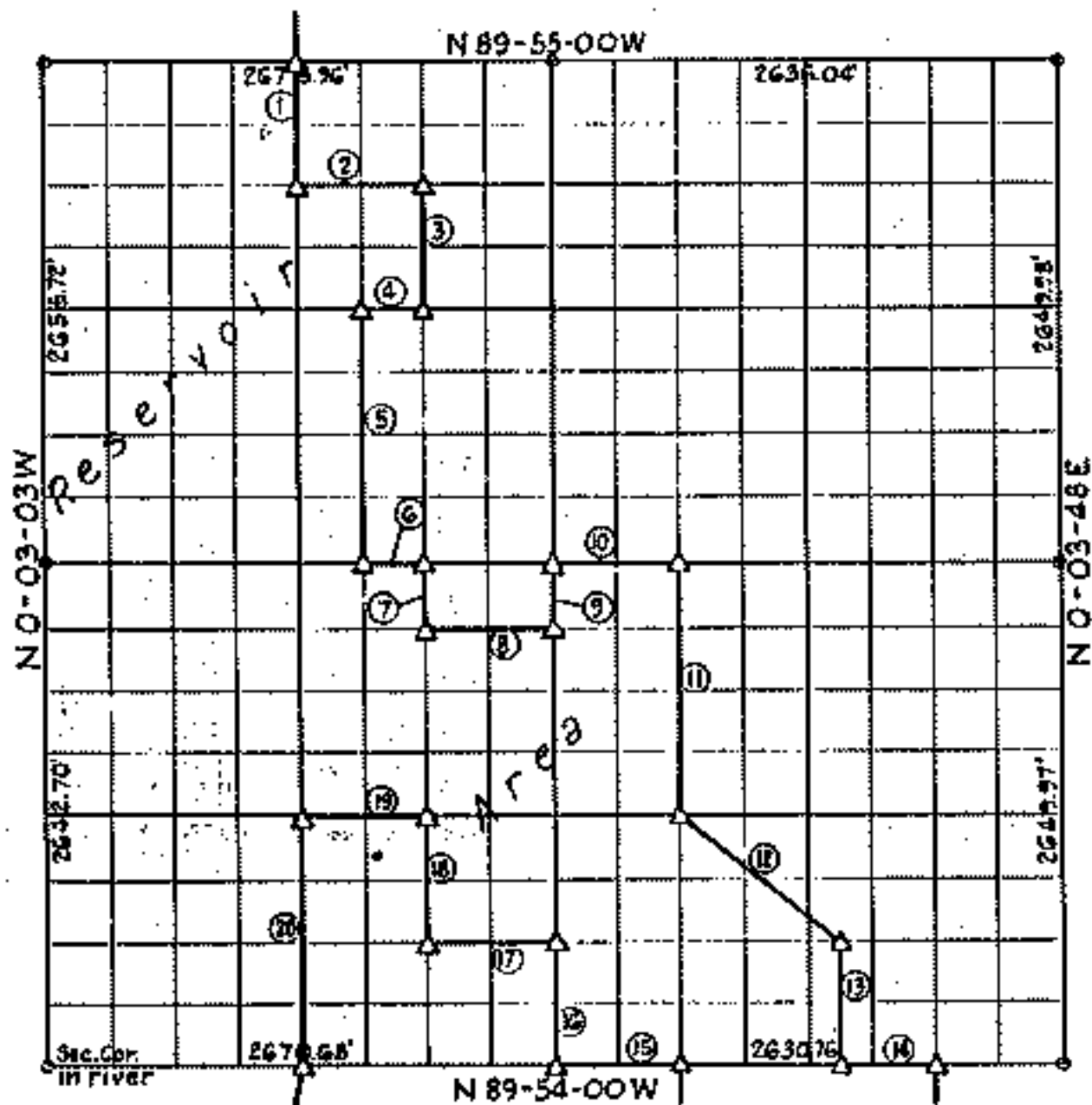


PARTIAL BOUNDARY SURVEYS
 FORT GIBSON LAKE
 AREA "I"

Performed under Contract Number DACW 56-73-C-0230

SEC. 13 T. 20 N. R. 19 E. COUNTY MAYES



Course No.	Distance	Bearing	Course No.	Distance	Bearing
1	663.57	S 0° 01' 20" E	12	1050.10	S 51° 06' 57" E
2	666.83	S 89° 55' 56" E	13	662.10	S 0° 02' 16" E
3	663.59	S 0° 00' 29" E	14	1023.27	S 89° 51' 08" E
4	331.23	N 89° 56' 51" E	15	667.22	N 89° 51' 00" E
5	1255.00	S 0° 00' 55" E	16	661.59	T 0° 00' 23" E
6	331.01	S 89° 53' 43" E	17	667.24	S 89° 55' 11" E
7	330.50	S 0° 00' 39" E	18	661.36	N 0° 00' 29" E
8	662.22	S 89° 56' 07" E	19	661.16	S 89° 51' 22" E
9	331.00	T 0° 03' 22" E	20	1321.00	S 0° 01' 26" E
10	662.35	S 89° 56' 43" E			
11	1020.11	S 0° 01' 13" E			

Book No. 5-1868 Date: October, 1973

I, Charles C. Fisher, hereby certify that the above plot is a true and correct representation of the survey made in Section 13, T. 20 N., R. 19 E.

- LEGEND**
- △ Monument
 - Original Stone
 - Iron Pin
 - ▲ Mon. by O.H.D.

Charles C. Fisher
 Registered Professional Surveyor No. 15

FORT MONROE LAKE

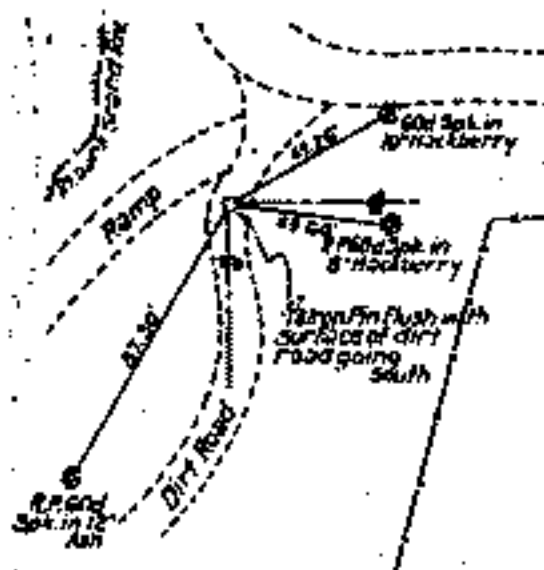
AREA 'I'

SECTION AND QUARTER SECTION CORNER

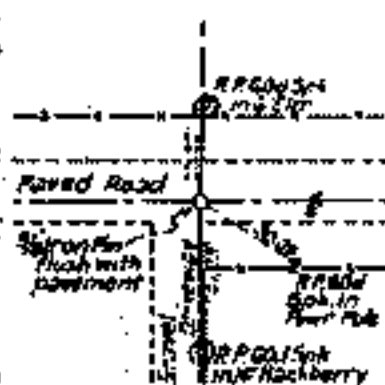
REFERENCES FOR

SECTION 13, T. 20N., R. 19E., MAYES CO.

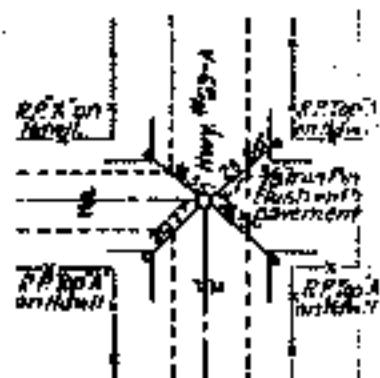
N.W. SECTION CORNER



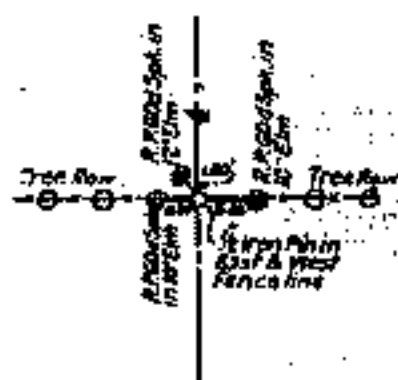
NO. 1/4 CORNER



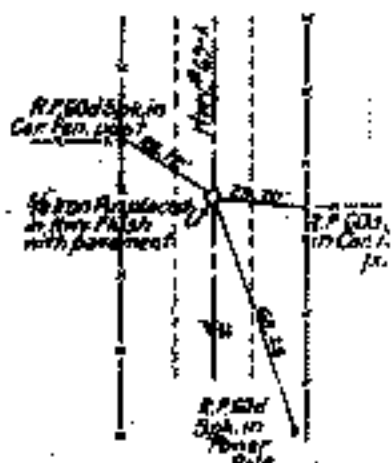
N.E. SECTION CORNER



WEST 1/4 CORNER



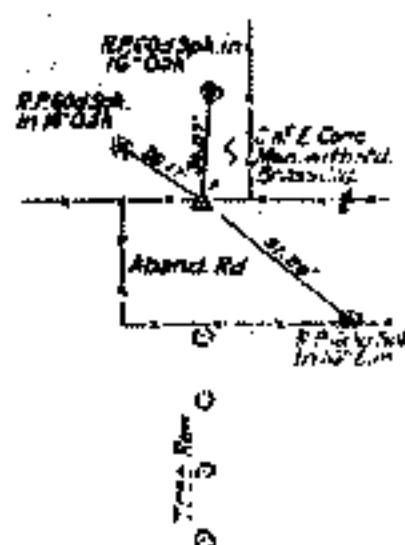
EAST 1/4 CORNER



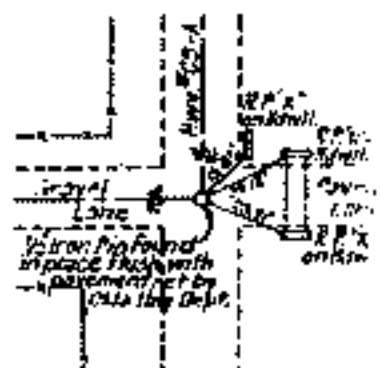
S.W. SECTION CORNER



SO. 1/4 CORNER



S.E. SECTION CORNER



Scale: 1" = 50'
 Date: June-October 1973
 Field Book No. 5-1868