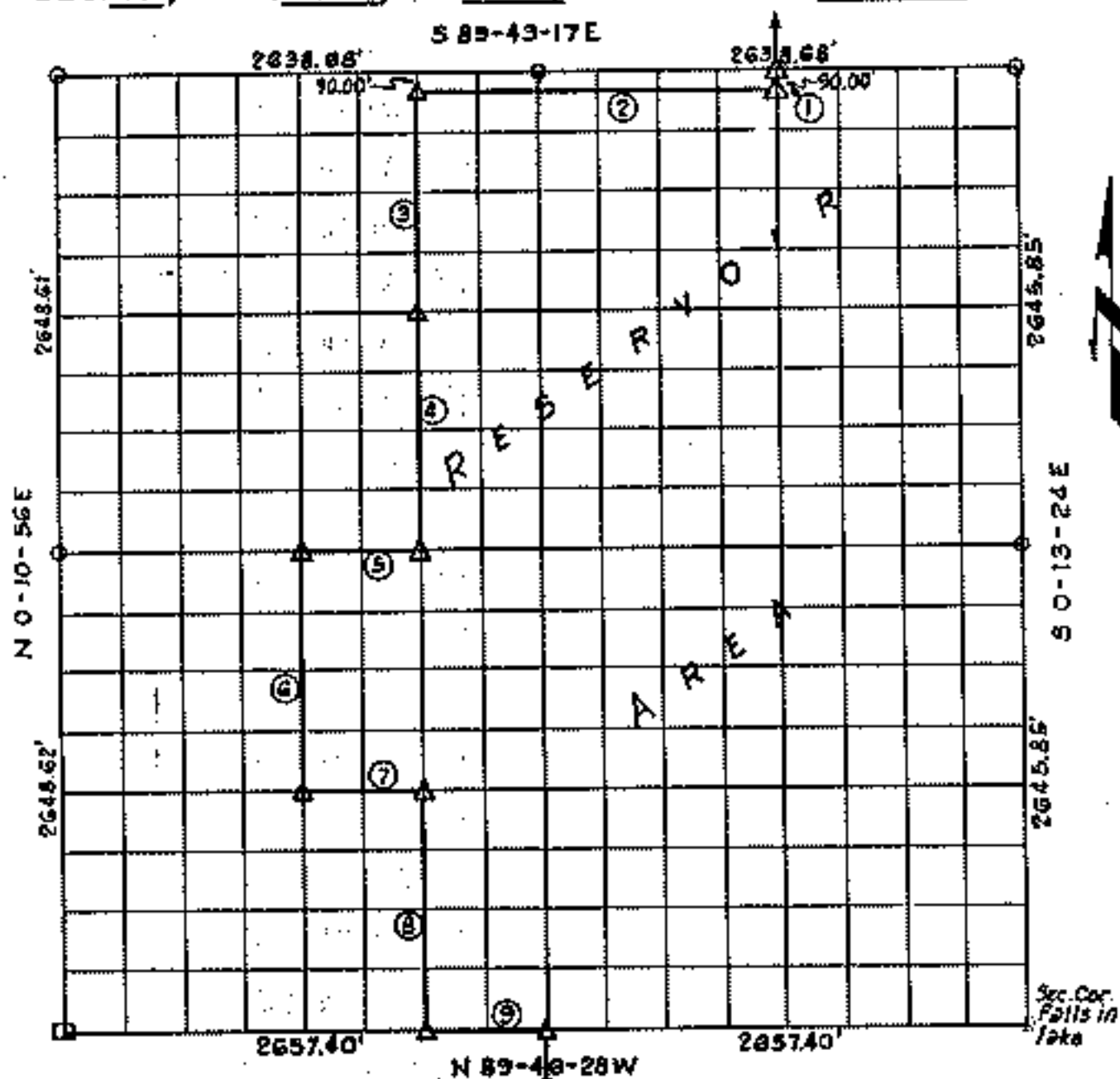


PARTIAL BOUNDARY SURVEYS
 FORT GIBSON LAKE, AREA "I"
 OKLAHOMA

Performed under Contract Number DACW 56-76-C-0113
 SEC. 15, T. 20N., R. 19E., COUNTY MAYES



Course No.	Distance	Bearing	Course No.	Distance	Bearing
1	90.00'	S 0° 07' 19" E			
2	1979.27'	N 89° 43' 17" W			
3	1233.86'	S 0° 01' 48" W			
4	1323.86'	S 0° 01' 48" W			
5	662.01'	N 89° 44' 52" W			
6	1324.01'	S 0° 04' 51" W			
7	663.15'	S 89° 45' 40" E			
8	1323.91'	S 0° 01' 48" W			
9	664.35'	S 89° 46' 28" E			

Certificate of Survey

I hereby certify that the above plat is a true and correct representation of the survey made in Section 15, T. 20N., R. 19E., Mayes County, Oklahoma.

Charles J. Finklea
 Charles J. Finklea
 Registered Professional Surveyor No. 1904

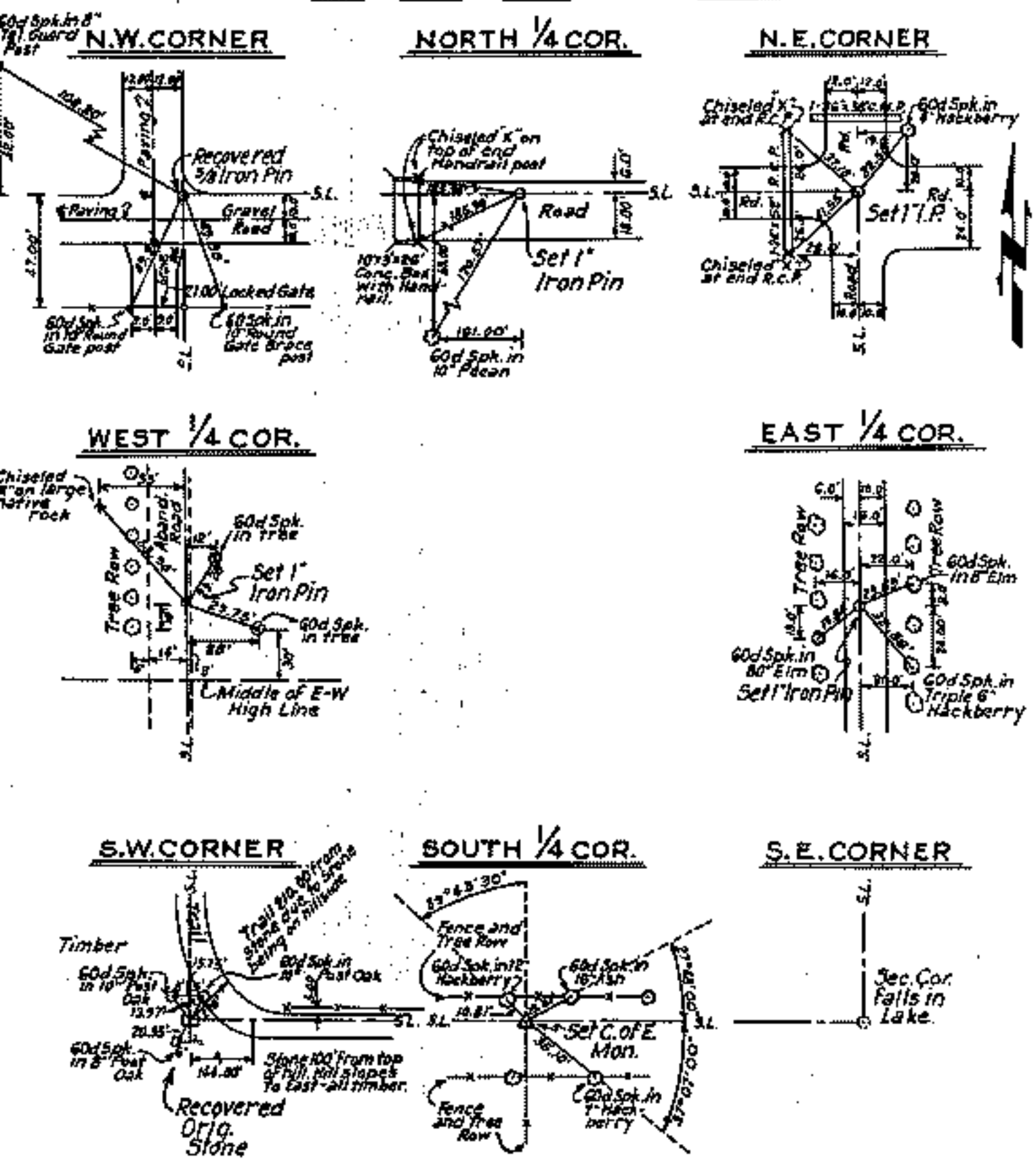
Scale: 1:10,000
 Date: Feb.-July, 1976
 Plat Book No. 5:1904

Sheet 1 of 2

Legend

- △ Monument
- Orig. Corner
- Iron Pin
- ▲ Mon. by O.H.D.

OKLAHOMA
SECTION AND QUARTER SECTION CORNER
REFERENCES FOR
SEC. 15, T. 20N., R. 19E., COUNTY MAYES



Sheet 2 of 2

Scale: 1" = 50'
 Date: Feb.-July, 1976
 Field Book No. 5-190

Certificate of Survey

I hereby certify that the above plat is a true and correct representation of the survey made in Section 15, T. 20N., R. 19E., Mayes County, Oklahoma.

Charles J. Finklea
 Charles J. Finklea
 Registered Land Surveyor No. 3

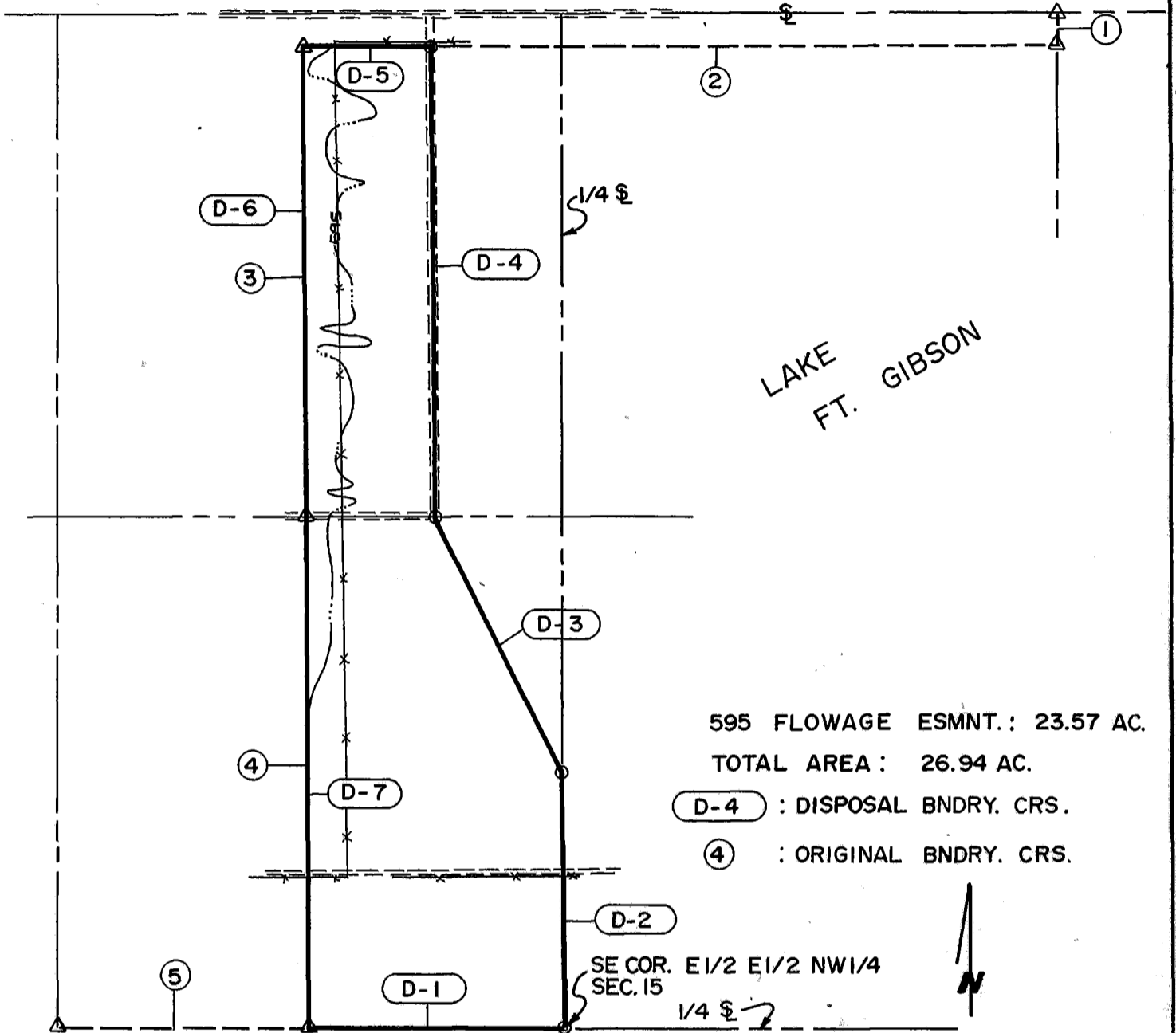
Legend

- ▲ Monument
- Orig. Corner
- Iron Pin
- ▲ Mon. by O.H.C.

DISPOSAL TRACT SURVEY PLAT
 FT. GIBSON DAM & RESERVOIR
 LAKE FT. GIBSON, OKLA.

SEC. 15, T 20 N, R 19 E, COUNTY MAYES

PARCEL NO. 49 Performed Under Contract No. DACA56-88-D-0050



595 FLOWAGE ESMNT.: 23.57 AC.

TOTAL AREA: 26.94 AC.

D-4 : DISPOSAL BNDRY. CRS.

④ : ORIGINAL BNDRY. CRS.

SCALE 1"=400'

Course No.	Distance	Bearing	Course No.	Distance	Bearing
D-1	662.07	S 89°44'26"E			
D-2	661.81	N 00°01'14"W			
D-3	741.28	N 26°29'27"W			
D-4	1233.77	N 00°00'17"E			
D-5	329.88	N 89°43'20"W			
D-6	1233.42	S 00°01'38"W			
D-7	1324.21	S 00°02'07"W			

Field Book No. 5-1904 Date NOV. 1988

CERTIFICATE OF SURVEY ENTZ ENGINEERING & ASSOCIATES INC. AND HUFFMAN SURVEYING CO., INC.

I Hereby Certify That The Above Plat is a True and Correct

A Joint Venture for

Representation of the Survey Made in Sec. 15, T20N, R19E.

U.S. ARMY ENGINEER DISTRICT, TULSA CORPS OF ENGINEERS

— LEGEND —

Δ MONUMENT
 □ ORIGINAL CORNER
 ○ IRON PIN W/ CAP

Ron Huffman
 Ron Huffman L.S. 1020