

**PARTIAL BOUNDARY SURVEY  
FORT GIBSON LAKE, AREA "H"  
GRAND RIVER, OKLAHOMA**

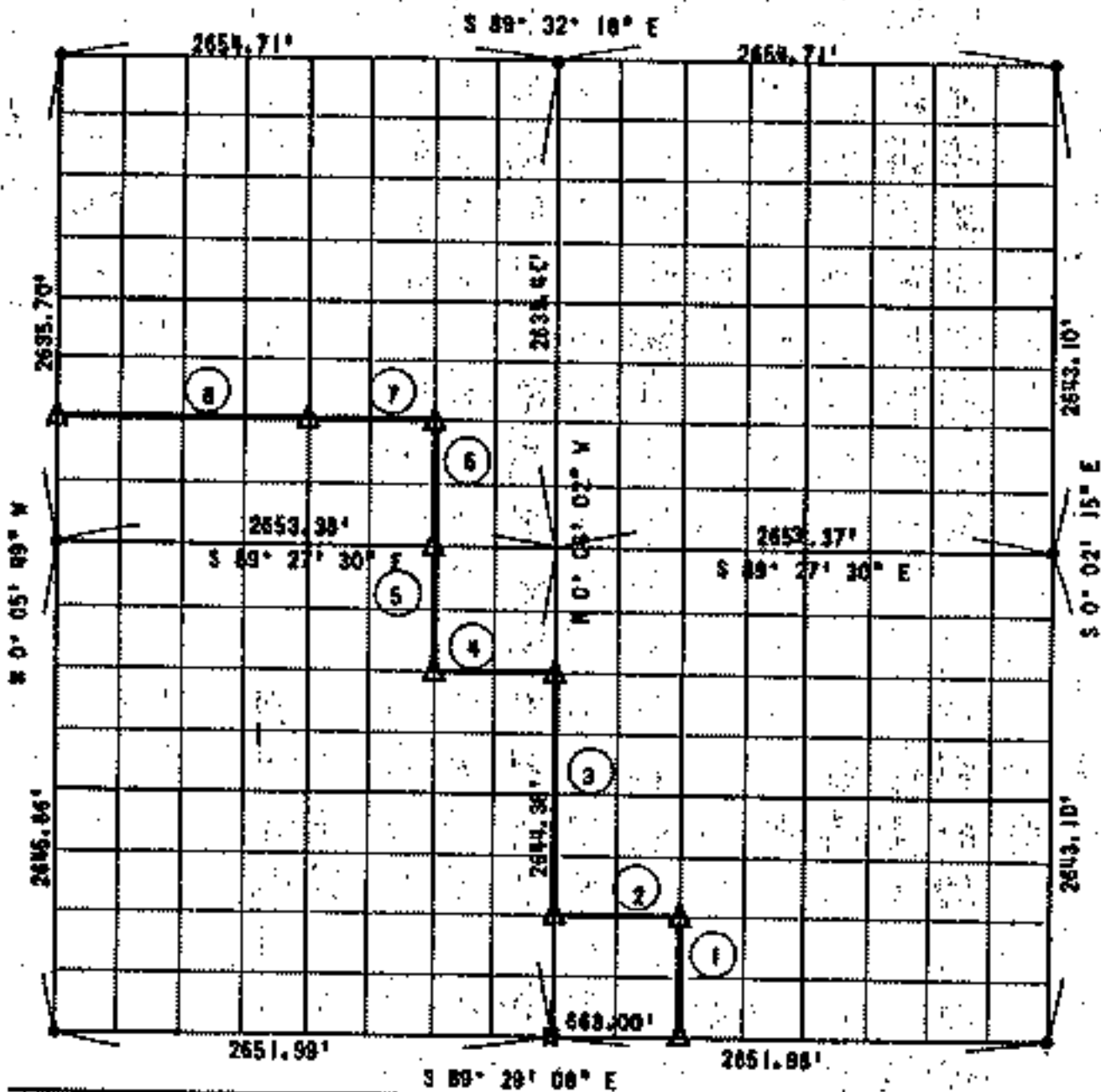
Performed Under Contract Number DACW 56-72-C-0117

Sec. 17

T-20-R

R-19-E

Marion County



Course No.	Distance	Bearing
1	661.01'	N 00° 03' 35" N
2	663.08'	N 89° 28' 43" W
3	1922.19'	N 00° 04' 02" N
4	463.82'	N 89° 27' 54" W
5	441.08'	N 00° 04' 20" W
6	459.62'	N 00° 04' 28" W
7	863.45'	N 89° 28' 42" W
8	1326.85'	N 89° 28' 42" W

**Certificate of Survey**

I hereby certify that the above plat is a true and correct representation of the survey made to Section 17, T20N, R19E, Marion County, Oklahoma

Field Book No. 6-1849

Date: September 29, 1972

**SULLIVAN & GILBERT, INC.**  
Consulting Engineers  
Under the Supervision of  
U. S. ARMY ENGINEER  
TULSA DISTRICT  
CORPS OF ENGINEERS

**LEGEND**

- △ Monument
- Original Corner
- Iron Pin
- Nails, R/W Mark

*[Signature]*

