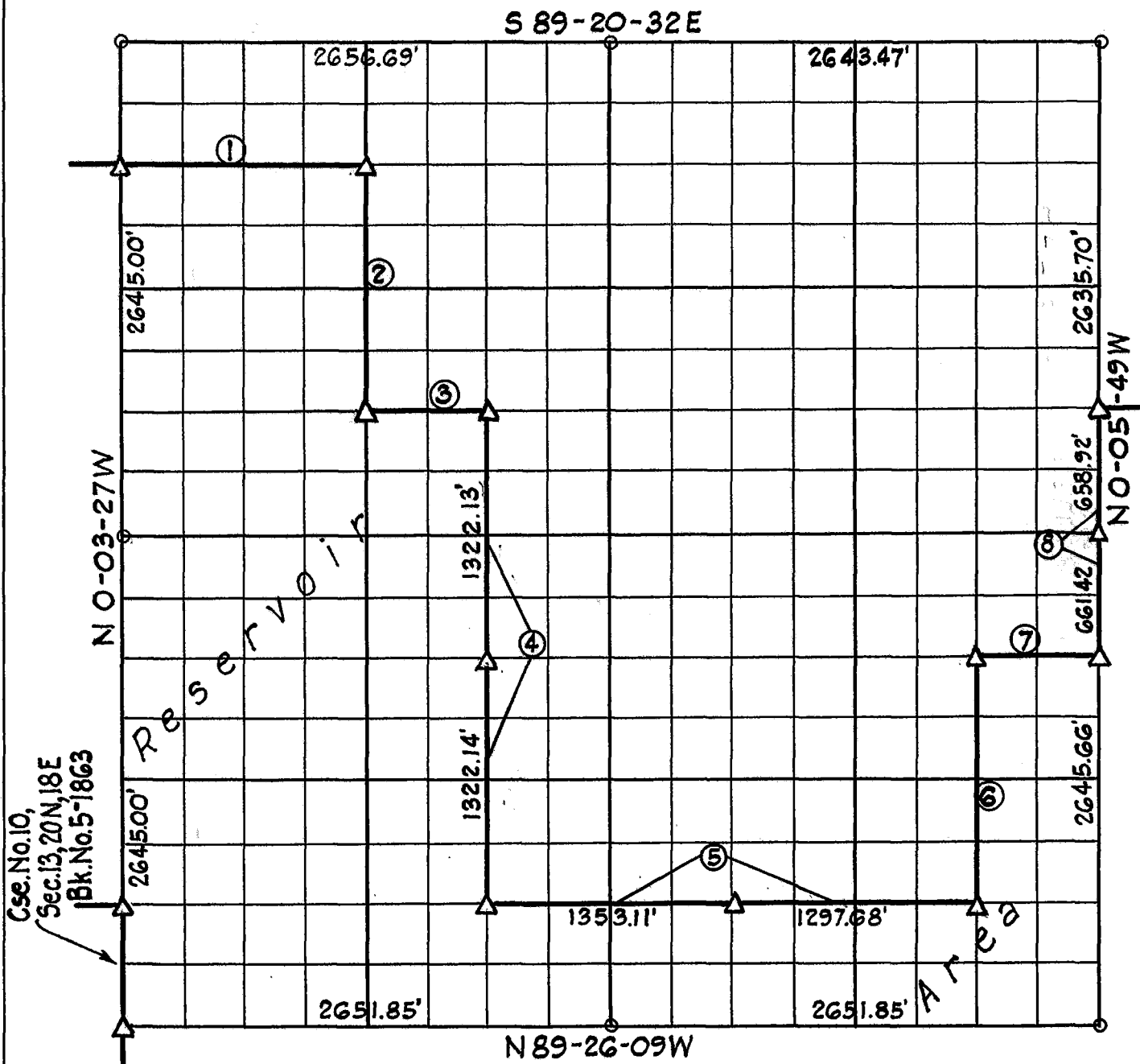


**PARTIAL BOUNDARY SURVEYS  
FORT GIBSON LAKE  
AREA "I"**

Performed under Contract Number DACW 56-73-C-0230

SEC. 18 T. 20N. R. 19E. COUNTY MAYES



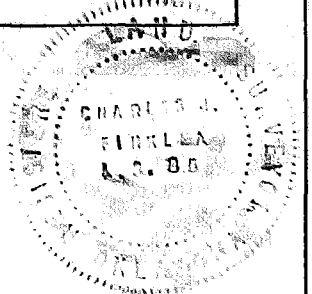
Course No.	Distance	Bearing	Course No.	Distance	Bearing
1	1333.82	S 89° 22' 03" E			
2	1321.11	S 89° 02' 21" W			
3	661.65	S 89° 25' 03" E			
4	2644.28	S 89° 01' 02" W			
5	2648.94	S 89° 26' 15" E			
6	1324.36	N 00° 04' 27" W			
7	662.17	S 89° 26' 28" E			
8	1320.34	N 00° 05' 49" W			

Book No. 5-1864 Date: October, 1973

I, Charles J. Finklea, hereby certify that the above plat is a true and correct representation of the survey made in Section 18, T20N, R19E.

- LEGEND**
- △ Monument
  - Original Stone
  - Iron Pin
  - ▲ Mon. by O.H.D.

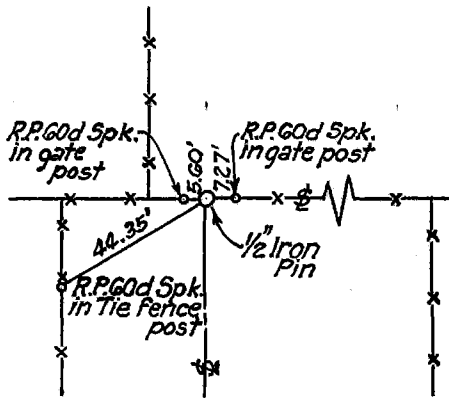
*Charles J. Finklea*  
Registered Land Surveyor No. 35



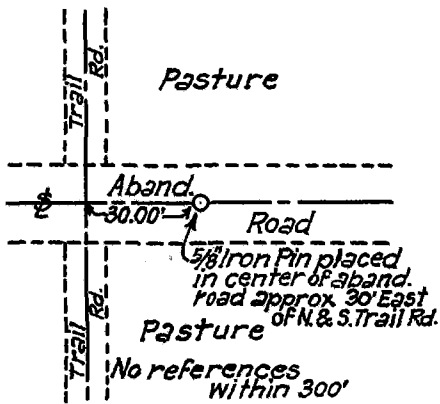
FORT GIBSON LAKE  
AREA "I"

SECTION AND QUARTER SECTION CORNER  
REFERENCES FOR  
SEC. 18, T 20N, R 19E, MAYES COUNTY

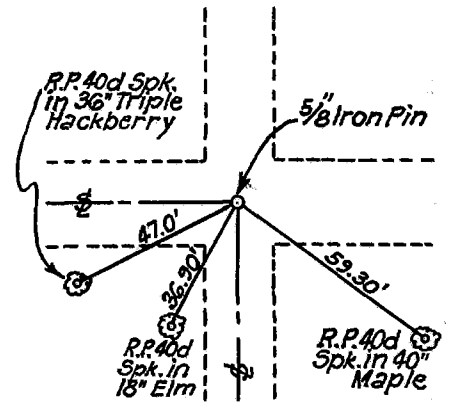
N.W. SECTION CORNER



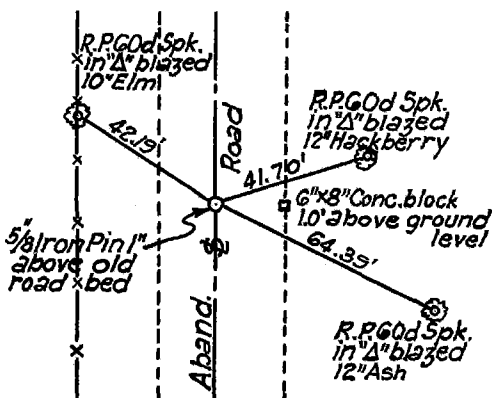
NO. 1/4 CORNER



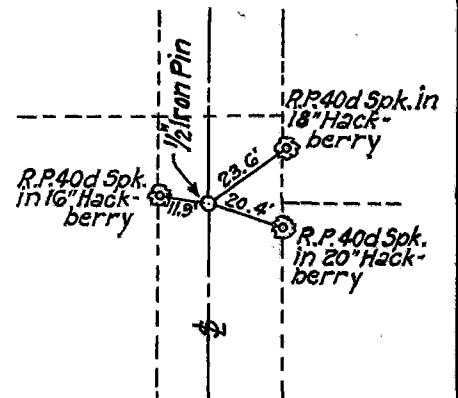
N.E. SECTION CORNER



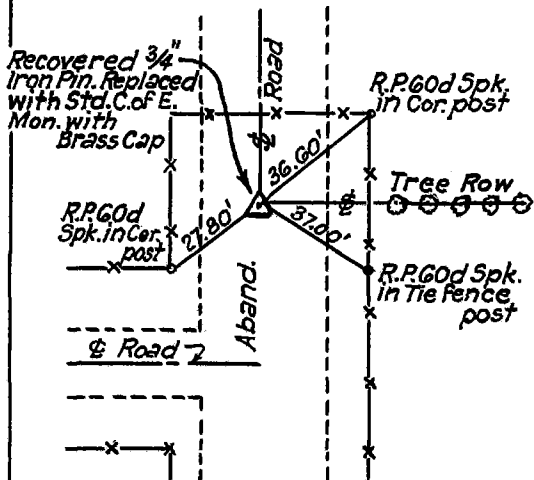
WEST 1/4 CORNER



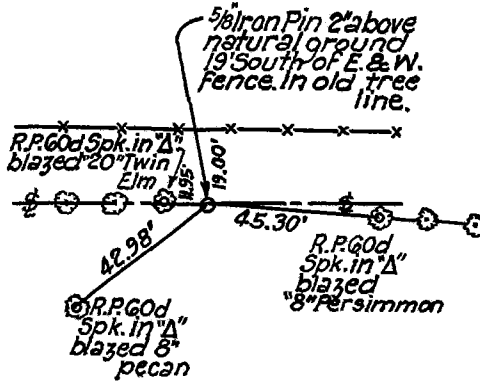
EAST 1/4 CORNER



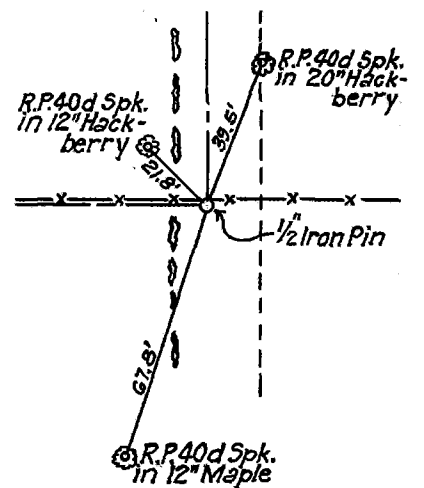
S.W. SECTION CORNER



SO. 1/4 CORNER



S.E. SECTION CORNER



Scale: 1" = 50'  
Date: June - October 1973  
Field Book No. 5-1864