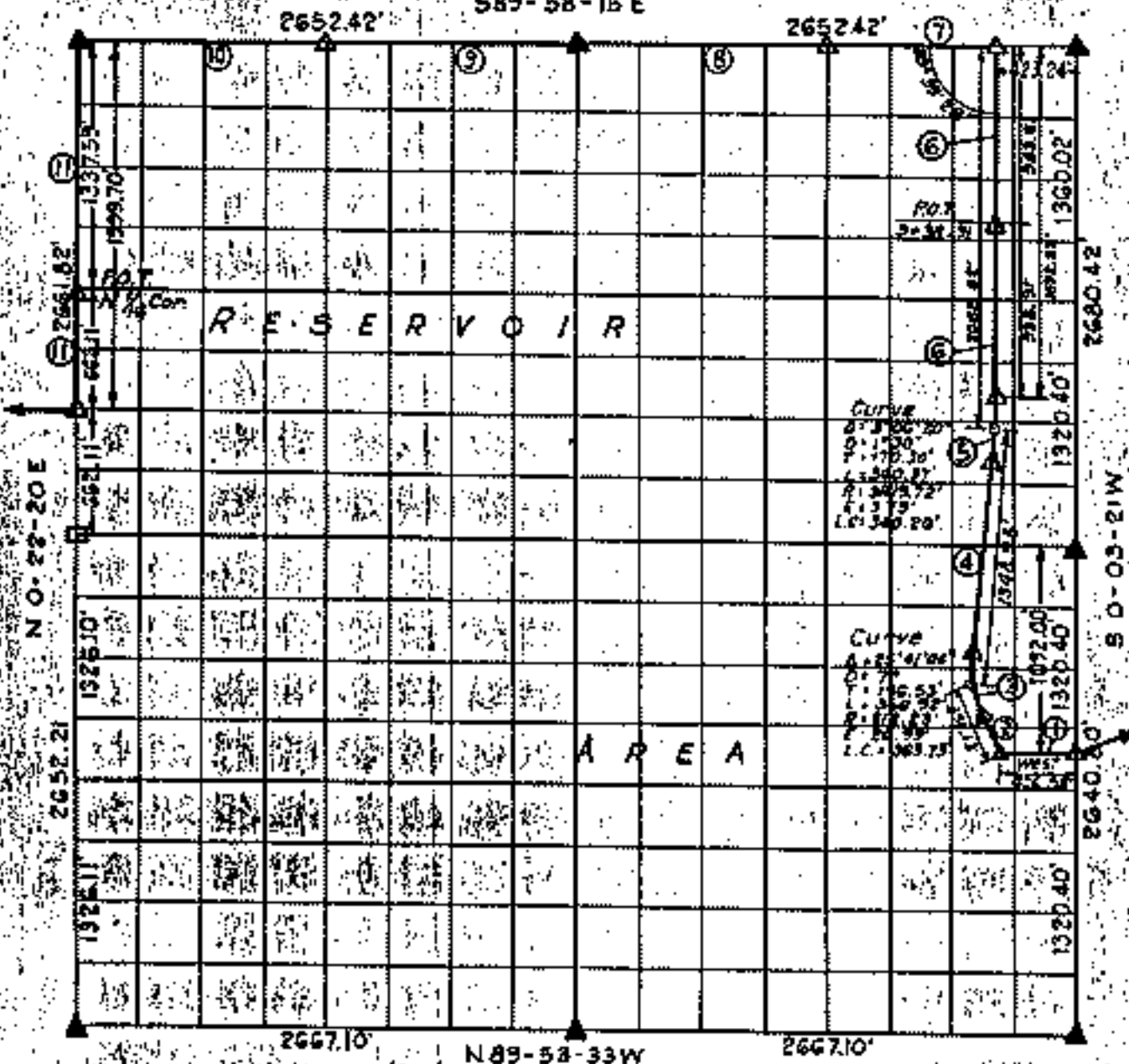


PARTIAL BOUNDARY SURVEYS
FORT GIBSON LAKE, AREA "I"
OKLAHOMA

Performed under Contract Number DACW 56-76-C-0113

SEC. 1, T. 20N., R. 19E., COUNTY MAYES

589-58-15 E



Course No.	Distance	Bearing	Course No.	Distance	Bearing
1	426.58'	WEST			
2	204.61'	N 20° 12' 27" W			
3	363.73'	N 7° 21' 55" W			
4	992.12'	N 5° 28' 37" E			
5	340.26'	N 2° 55' 27" E			
6	1892.82'	N 0° 22' 17" E			
7	902.97'	N 89° 58' 15" W			
8	1326.21'	N 89° 58' 15" W			
9	1326.21'	N 89° 58' 15" W			
10	1326.21'	N 89° 58' 15" W			
11	1999.70'	S 0° 22' 20" W			

Certificate of Survey

I hereby certify that the above plat is a true and correct representation of the survey made in Section 1, T. 20N., R. 19E., Mayes County, Oklahoma.

Sheet 1 of 2

Legend

- △ Monument
- Orig. Corner
- Iron Pin

Scale: - 1:10000
 Date: Feb-July, 1976

Charles J. Finkler
 Charles J. Finkler

FORT GIBSON LAKE, AREA "I" OKLAHOMA

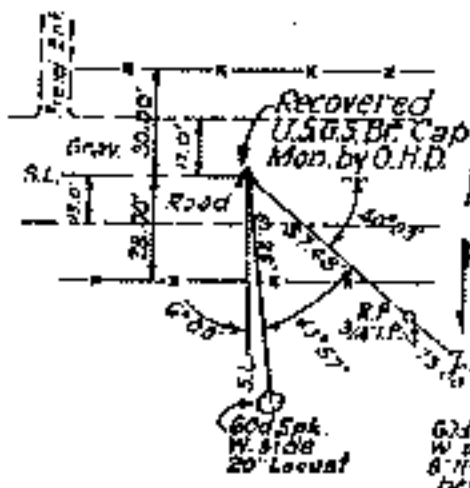
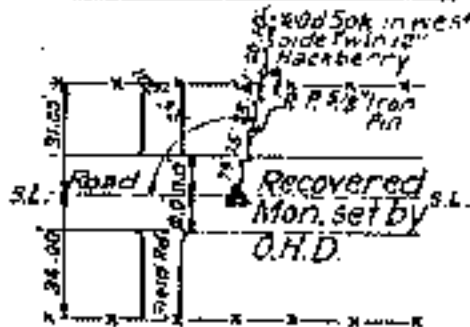
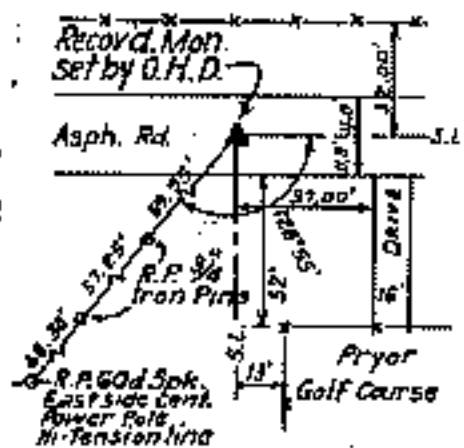
SECTION AND QUARTER SECTION CORNER REFERENCES FOR

SEC. 1, T. 20N., R. 19E., COUNTY MAYES

N.W. CORNER

NORTH 1/4 COR.

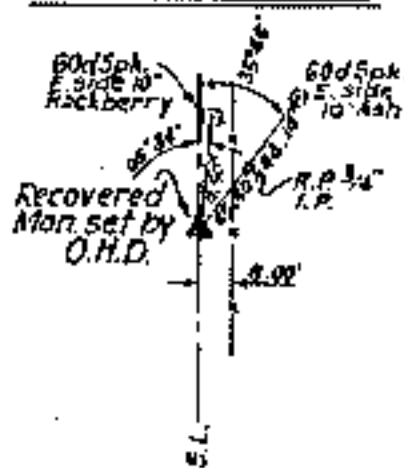
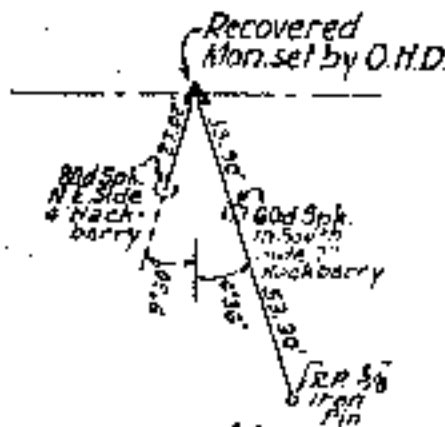
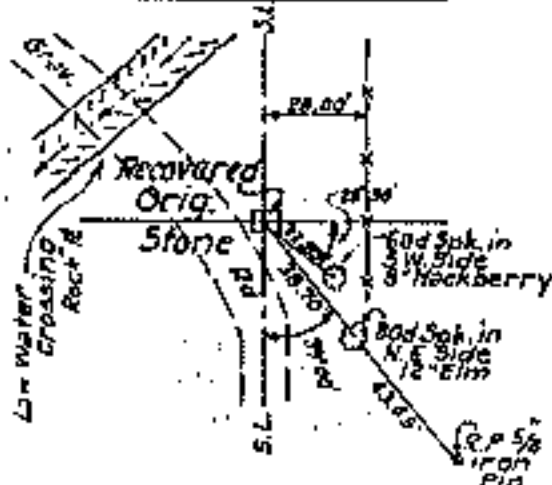
N.E. CORNER



WEST 1/4 COR.

CEN. 1/4 COR.

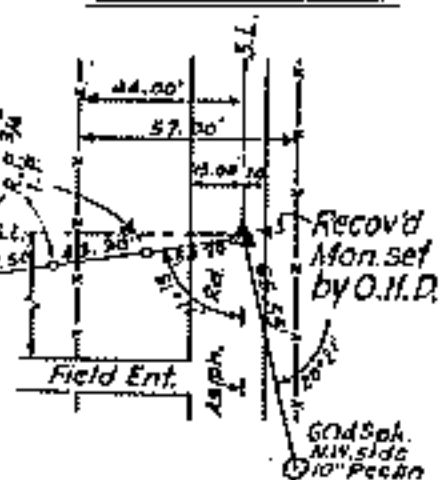
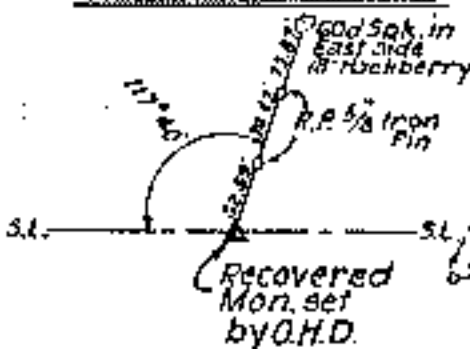
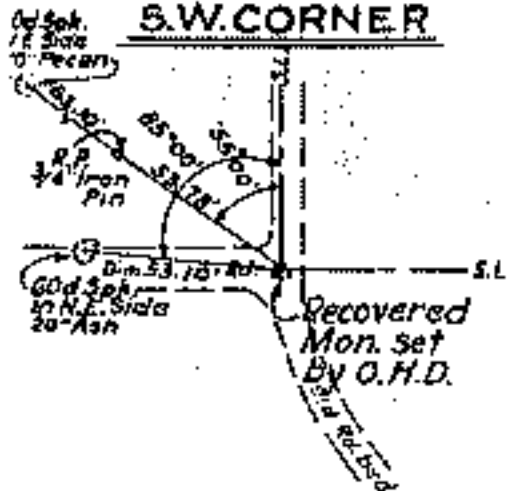
EAST 1/4 COR.



S.W. CORNER

SOUTH 1/4 COR.

S.E. CORNER



Certificate of Survey

I hereby certify that the above plat is a true and correct representation of the survey made in Section 1, T. 20N., R. 19E., Mayes County, Oklahoma.

Charles J. Finklea
Charles J. Finklea
Registered Land Surveyor No. 35

Sheet 2 of 2

Scale: - 1" = 50'
Date: - Feb.-July, 19
Field Book No. 5-19

Legend

- △ Monument
- Orig. Corner
- Iron Pin
- ▲ Mon. by O.H.D.

