

PARTIAL BOUNDARY SURVEY
 FORT GIBSON LAKE, AREA "H"
 GRAND RIVER, OKLAHOMA

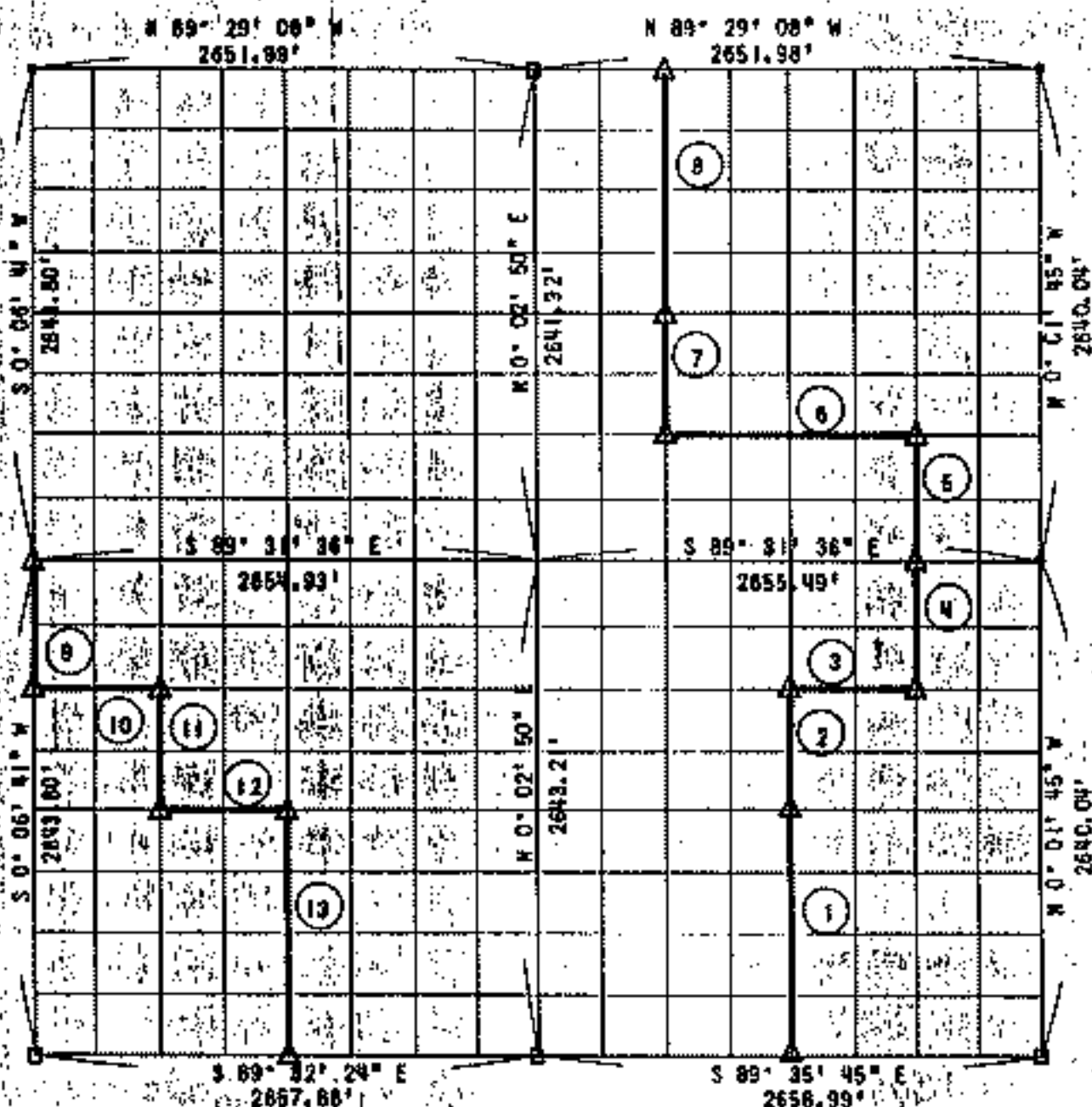
Performed Under Contract Number DACW 56-72-C-0117

Sec. 20

T-20-W

R-19-E

Mayes County



Course No.	Distance	Bearing
1	1320.81'	N 00° 00' 33\" E
2	660.41'	N 00° 00' 33\" E
3	664.38'	S 89° 32' 38\" E
4	660.38'	N 00° 00' 38\" W
5	660.13'	N 00° 00' 38\" W
6	1327.31'	N 89° 30' 59\" W
7	660.36'	N 00° 01' 41\" E
8	1320.72'	N 00° 01' 41\" E
9	660.95'	S 00° 06' 41\" W
10	664.30'	S 89° 31' 48\" E
11	660.91'	S 00° 06' 23\" W
12	664.25'	S 89° 32' 00\" E
13	1321.43'	S 00° 05' 54\" W

Certificate of Survey

I hereby certify that the above plot is a true & correct representation of the survey made in Section 20, T20N, R19E, Mayes County, Oklahoma.

Field Book No. 5-1850

Date: September 29, 1972

SULLIVAN & GILBERT, INC.
 Consulting Engineers
 Under the Supervision of
 U. S. ARMY ENGINEER
 TULSA DISTRICT
 CORPS OF ENGINEERS

LEGEND

- △ Monument
- Original Corner
- Iron Pin
- ⊠ Hwy. R/W Marker

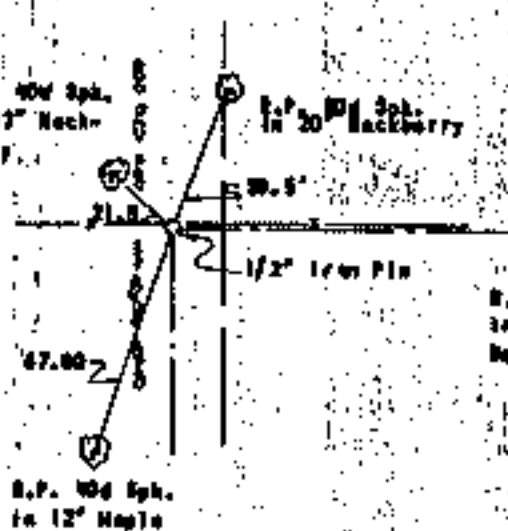
[Handwritten signature]

SECTION AND QUARTER SECTION

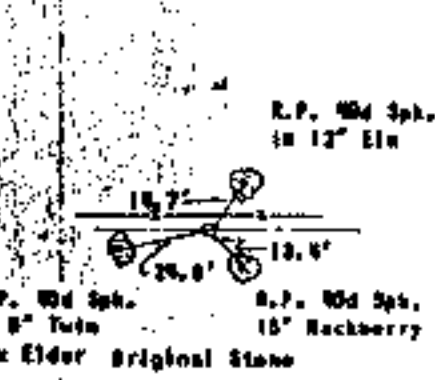
REFERENCES FOR

SECTION 20, T 20 N, R 19 E CHEROKEE COUNTY

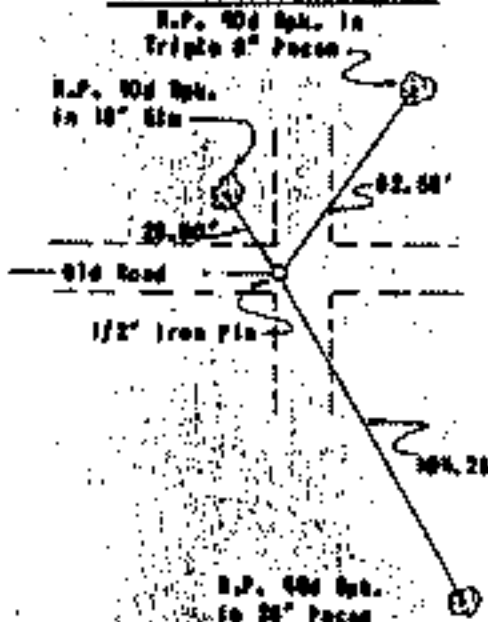
N. W. SECTION CORNER



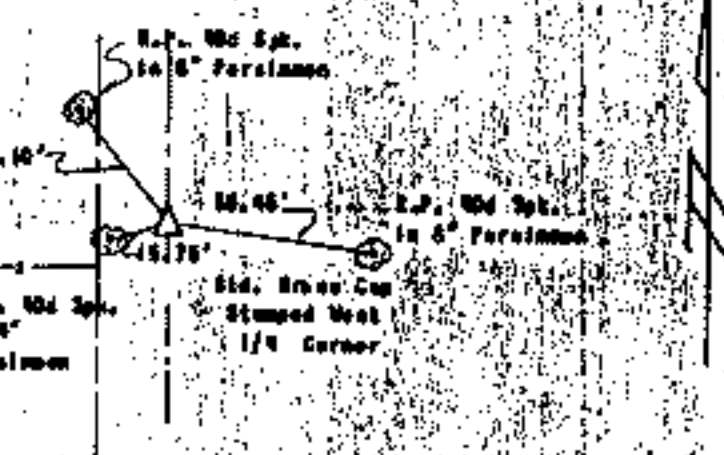
NORTH 1/4 CORNER



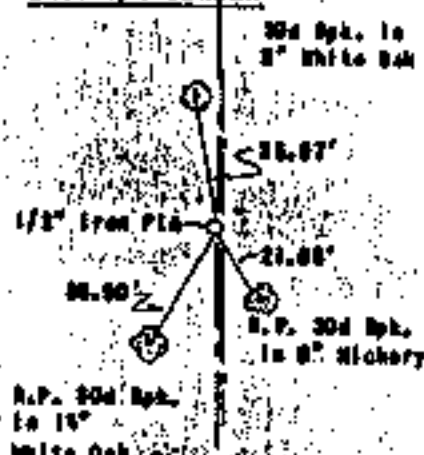
N. E. SECTION CORNER



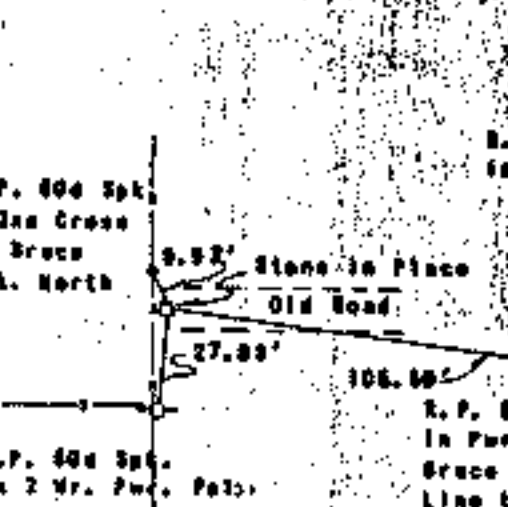
WEST 1/4 CORNER



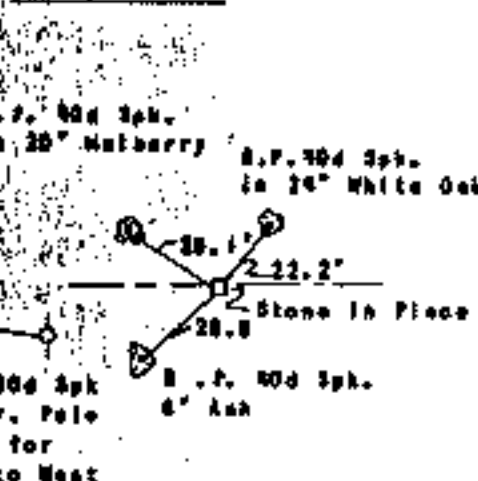
EAST 1/4 CORNER



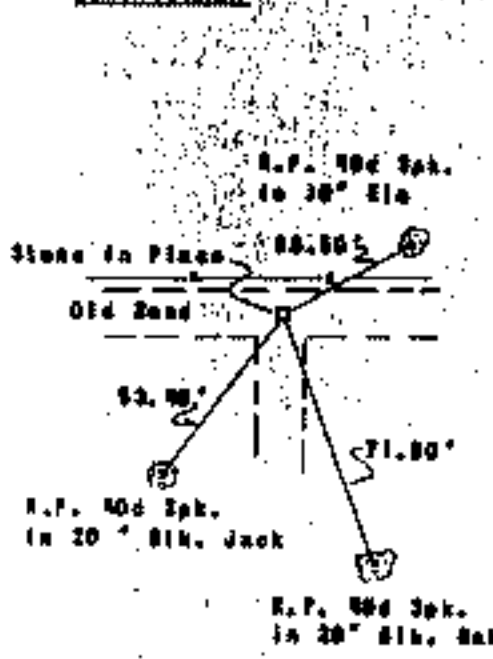
S. W. SECTION CORNER



SO. 1/4 CORNER



S. E. CORNER



Scale: 1" = 50'
 Date: September 28, 1972
 Field Book No. 9-1972