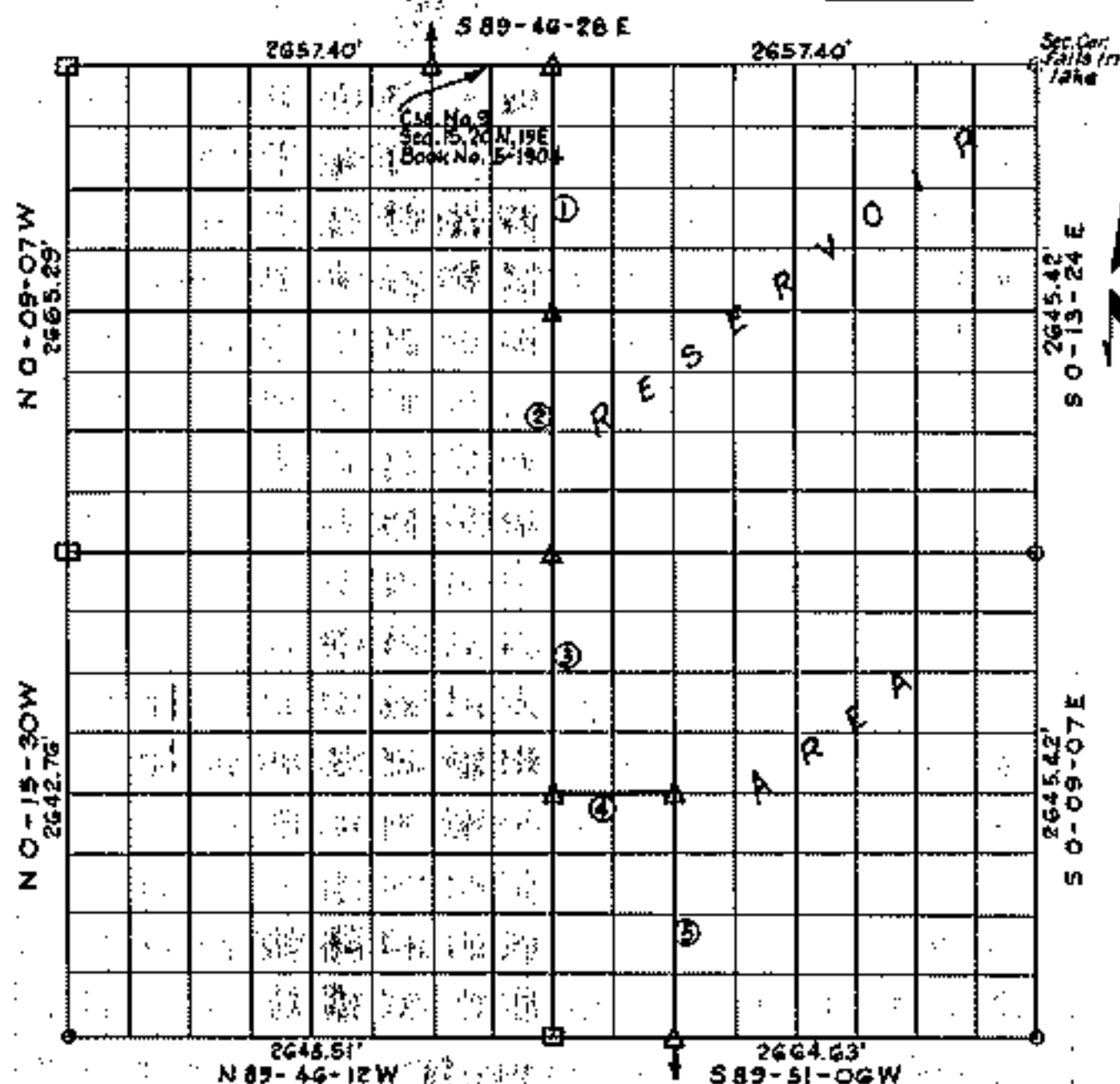


PARTIAL BOUNDARY SURVEYS
FORT GIBSON LAKE, AREA "I"
OKLAHOMA

Performed under Contract Number DACW 56-76-C-0113
 SEC. 22, T. 20 N., R. 19 E., COUNTY MAYES



Course No.	Distance	Bearing	Course No.	Distance	Bearing
1	1327.67'	S 0° 06' 31" E			
2	1327.67'	S 0° 06' 31" E			
3	1325.99'	S 0° 06' 31" E			
4	666.02'	N 89° 55' 54" E			
5	1325.91'	S 0° 08' 14" E			

Certificate of Survey

I hereby certify that the above plat is a true and correct representation of the survey made in Section 22, T. 20 N., R. 19 E., Mayes County, Oklahoma.

Charles J. Finklea
 Charles J. Finklea
 Registered Land Surveyor No. 35

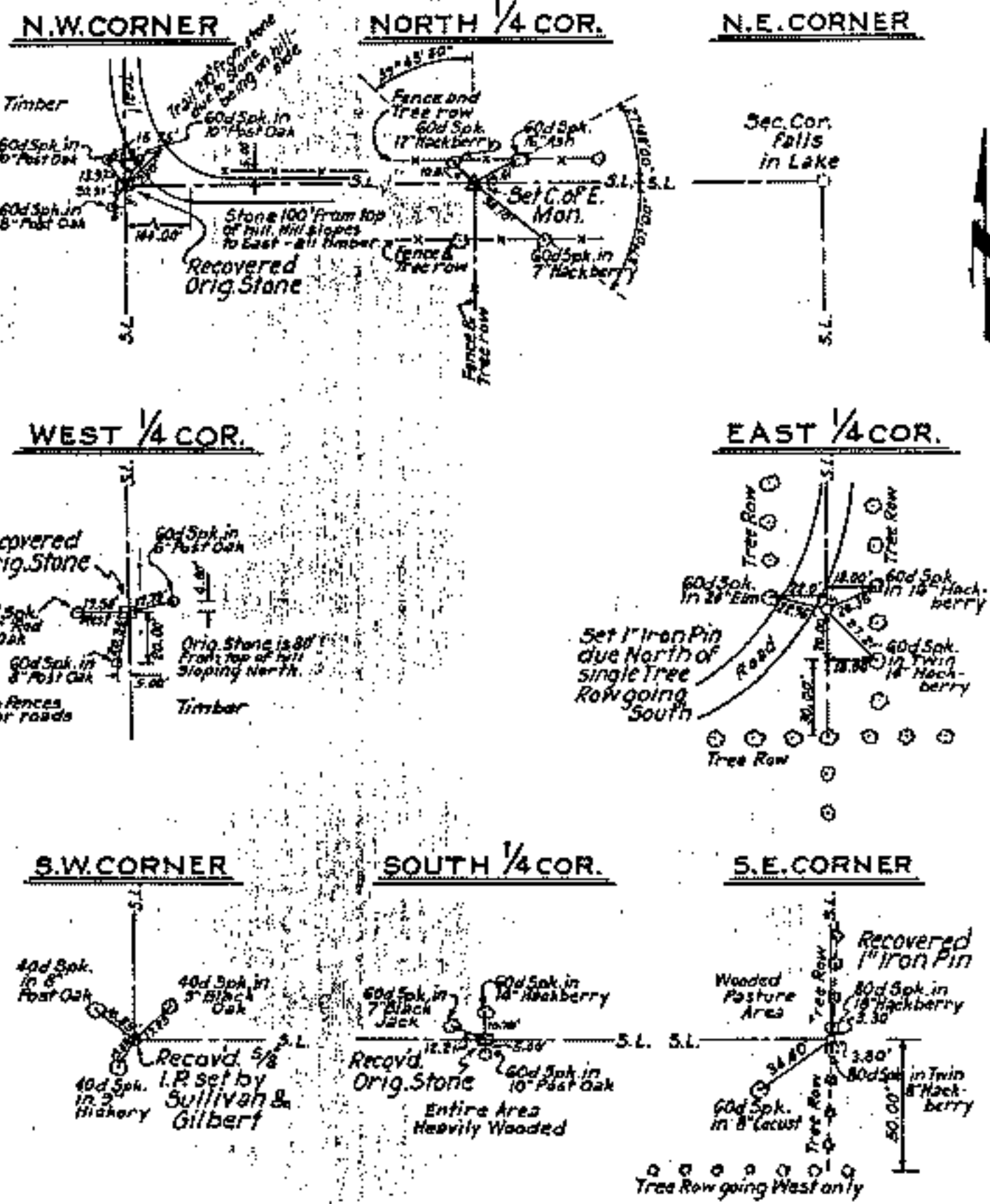
Scale: 1:10,000
 Date: Feb-July, 1976
 Field Book No. 5-1905

Sheet 1 of 2

Legend

- △ Monument
- Orig. Corner
- Iron Pin
- ▲ Mon. by O.H.D.

OKLAHOMA
SECTION AND QUARTER SECTION CORNER
REFERENCES FOR
SEC. 22, T. 20N., R. 19E., COUNTY MAYES



Certificate of Survey

I hereby certify that the above plat is a true and correct representation of the survey made in Section 22, T. 20N., R. 19E., Mayes County, Oklahoma.

Charles J. Finklea
 Charles J. Finklea
 Registered and Surveyor No. 05

Sheet 2 of 2

Scale: 1" = 50'
 Date: Feb.-July, 1976
 Field Book No. 5-19

Legend

- △ Monument
- Orig. Corner
- Iron Pin
- Mon. by O.H.D.