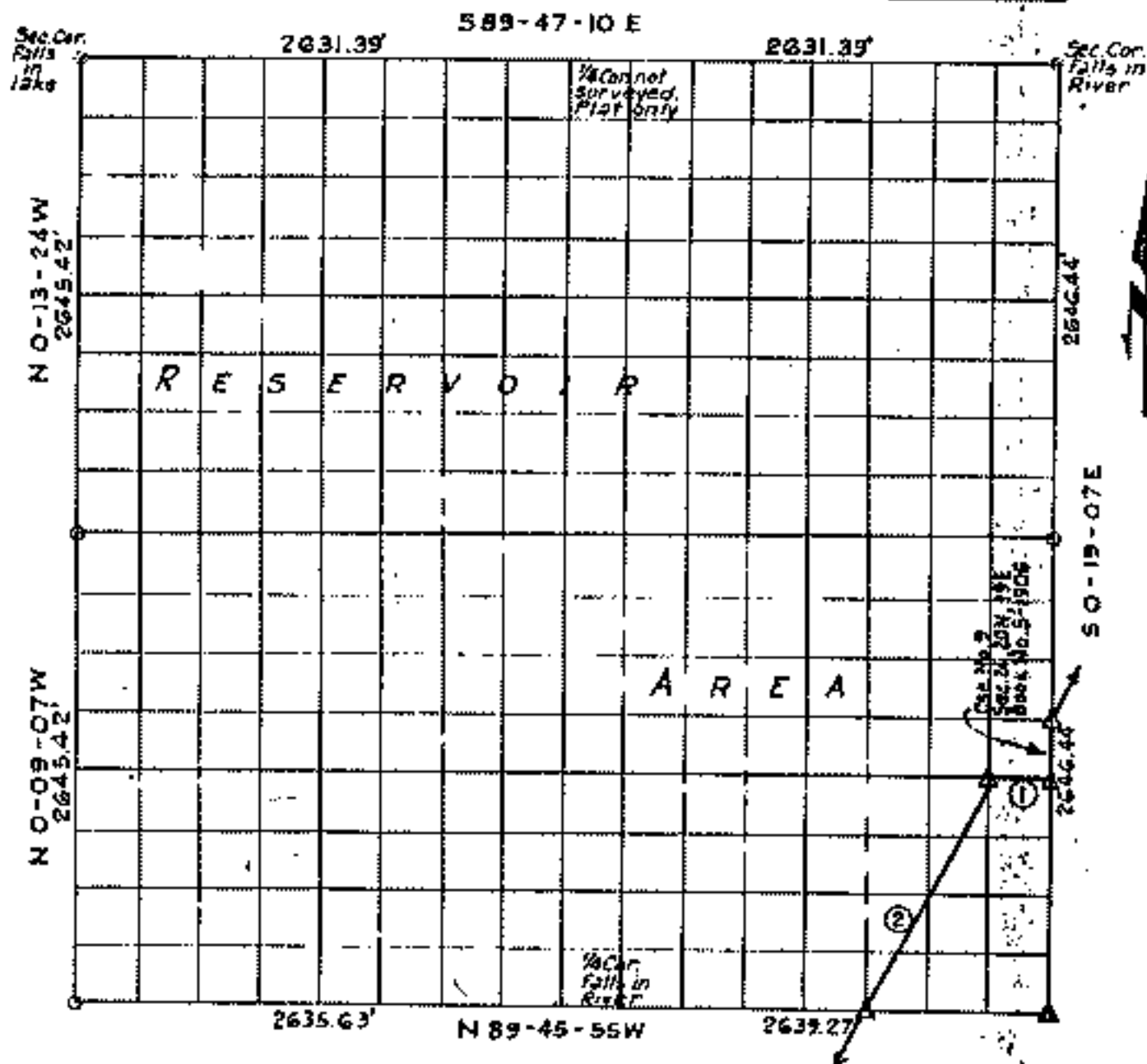


# FORT GIBSON LAKE, AREA "I" OKLAHOMA

Performed under Contract Number DACW 56-76-C-0113  
SEC. 23, T. 20N., R. 19E., COUNTY MAYES



Course No.	Distance	Bearing	Course No.	Distance	Bearing
1	300.00'	N 89° 46' 06" W			
2	1488.06'	S 27° 19' 48" W			

### Certificate of Survey

I hereby certify that the above plat is a true and correct representation of the survey made in Section 23, T. 20N., R. 19E., Mayes County, Oklahoma.

Sheet 1 of 2.

### Legend

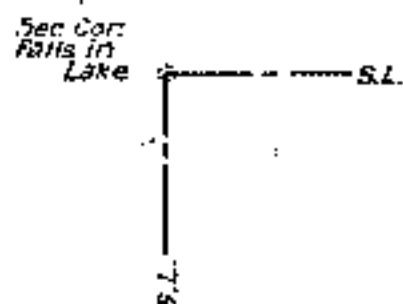
- △ Monument
- Orig. Corner
- Iron Pin
- ▲ Mon. by O.H.D.

*Charles J. Finklea*  
Charles J. Finklea  
Registered Land Surveyor No. 35

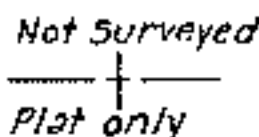
Scale: 1:10000  
Date: Feb. - July, 1976  
Field Book No. 5-1680,  
5-1905 & 5-1906

**FORT GIBSON LAKE, AREA 1  
OKLAHOMA**  
SECTION AND QUARTER SECTION CORNER  
REFERENCES FOR  
SEC. 23, T. 20N., R. 19E., COUNTY MAYES

N.W. CORNER



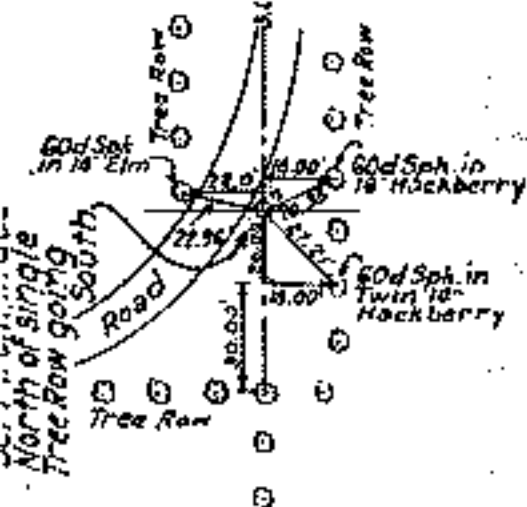
NORTH 1/4 COR.



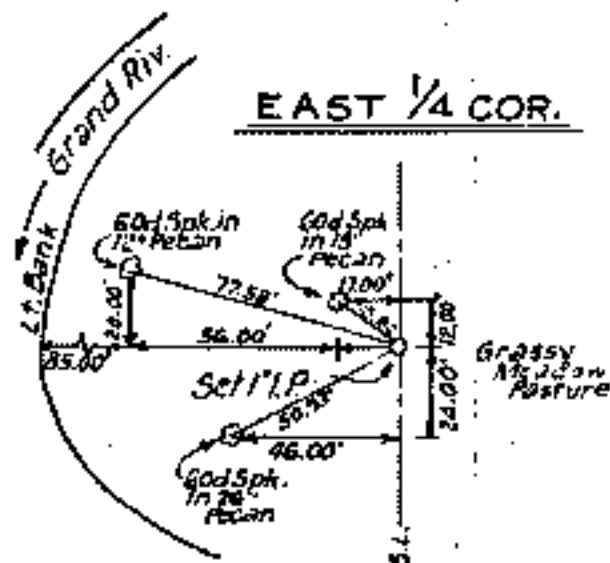
N.E. CORNER



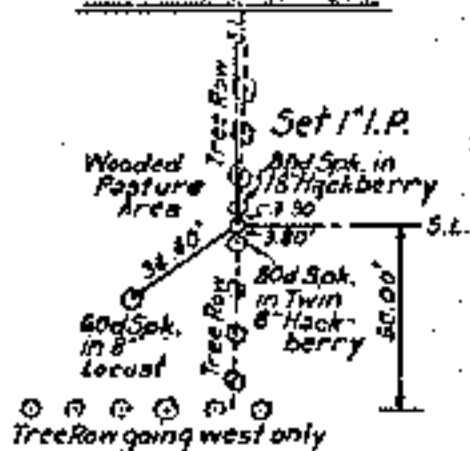
WEST 1/4 COR.



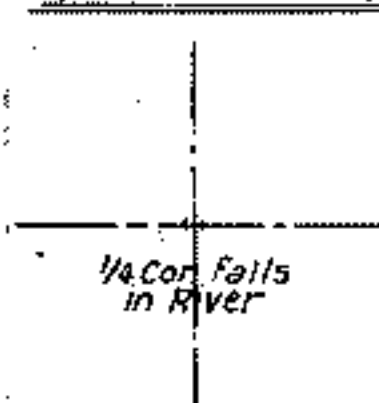
EAST 1/4 COR.



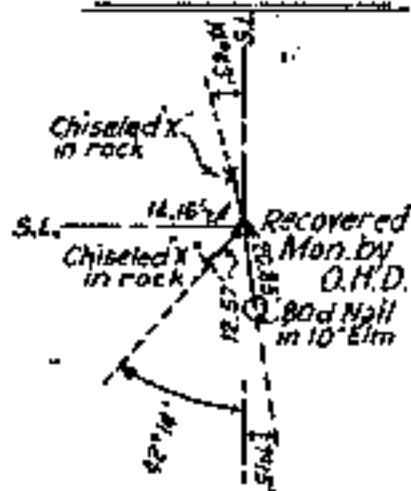
S.W. CORNER



SOUTH 1/4 COR.



S.E. CORNER



Sheet 2 of 2

Scale: - 1" = 50'  
Date: - Feb.-July, 1970  
Field Book No. 5-16  
5-19  
5-19

Legend

- ▲ Monument
- Orig. Corner
- Iron Pin
- ▲ Mon. by O.H.D.

Certificate of Survey

I hereby certify that the above plat is a true and correct representation of the survey made in Section 23, T. 20N., R. 19E., Mayes County, Oklahoma.

*Charles J. Finklea*  
Charles J. Finklea  
Registered Land Surveyor No. 35