

Course No.	Distance	Bearing	Course No.	Distance	Bearing
1	659.88	N 0° 09' 05" E			
2	659.98	S 89° 54' 11" E			
3	659.02	N 0° 10' 21" E			
4	164.93	S 89° 53' 53" E			
5	659.81	N 0° 10' 42" E			
6	494.61	S 89° 53' 34" E			
7	959.69	N 0° 11' 41" E			
8	2262.33	N 75° 29' 59" E			
9	593.07	S 33° 35' 49" E			

Book No. 5-1680

Date: June, 1965

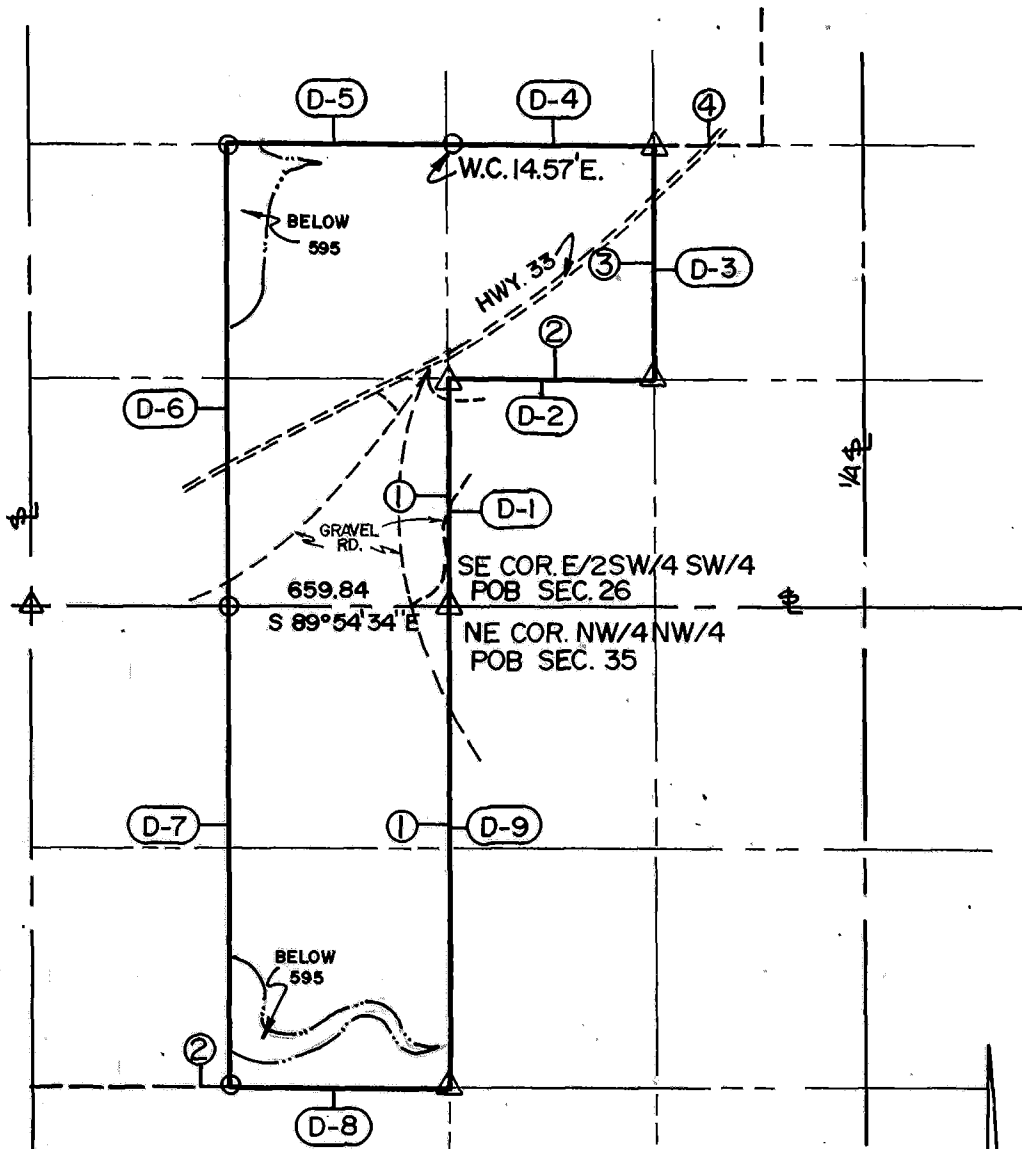
I, Charles J. Finkler, a Registered Professional Engineer, do hereby certify that the above is a true and accurate survey of Sec. 26 T 20 N R 19 E as made under my supervision.

Charles J. Finkler
 Reg. Prof. Engr. No. 1063

**DISPOSAL TRACT SURVEY PLAT
FT. GIBSON DAM & RESERVOIR
LAKE FT. GIBSON, OKLA.**

SEC. 26, 35 , T 20 N , R 19 E, COUNTY MAYES

PARCEL NO. 35 Performed Under Contract No. DACA56-88-D-0050



- (D-1) DISPOSAL BNDRY. CRS.
- (4) ORIGINAL BNDRY. CRS.

FLOWAGE EASEMENT: 2.77 ACRES BELOW 595
TOTAL AREA : 49.89 ACRES



SCALE 1"=600'

Course No.	Distance	Bearing	Course No.	Distance	Bearing
D-1	660.46	N 00°05'05" W			
D-2	660.00	S 89°48'59" E			
D-3	660.25	N 00°11'09" W			
D-4	659.84	N 89°54'07" W			
D-5	659.97	N 89°54'07" W			
D-6	1319.81	S 00°08'03" E			
D-7	1315.67	S 00°12'18" E			
D-8	658.26	N 89°55'20" E			
D-9	1313.74	N 00°16'28" E			

Field Book No. 5-1680 Date JAN., 1989

CERTIFICATE OF SURVEY ENTZ ENGINEERING & ASSOCIATES INC. AND HUFFMAN SURVEYING CO., INC.

I Hereby Certify That The Above Plat is a True and Correct Representation of the Survey Made in Sec. 26, 35, T. 20 N, R. 19 E.

Ron Huffman
Ron Huffman, L.S. 1020

A Joint Venture for
U.S. ARMY ENGINEER DISTRICT, TULSA
CORPS OF ENGINEERS

— LEGEND —
 Δ MONUMENT
 □ ORIGINAL CORNER
 ○ IRON PIN/CAP
 SHT 1 of 3