

PARTIAL BOUNDARY SURVEY
 FORT GIBSON LAKE, AREA "H"
 GRAND RIVER, OKLAHOMA

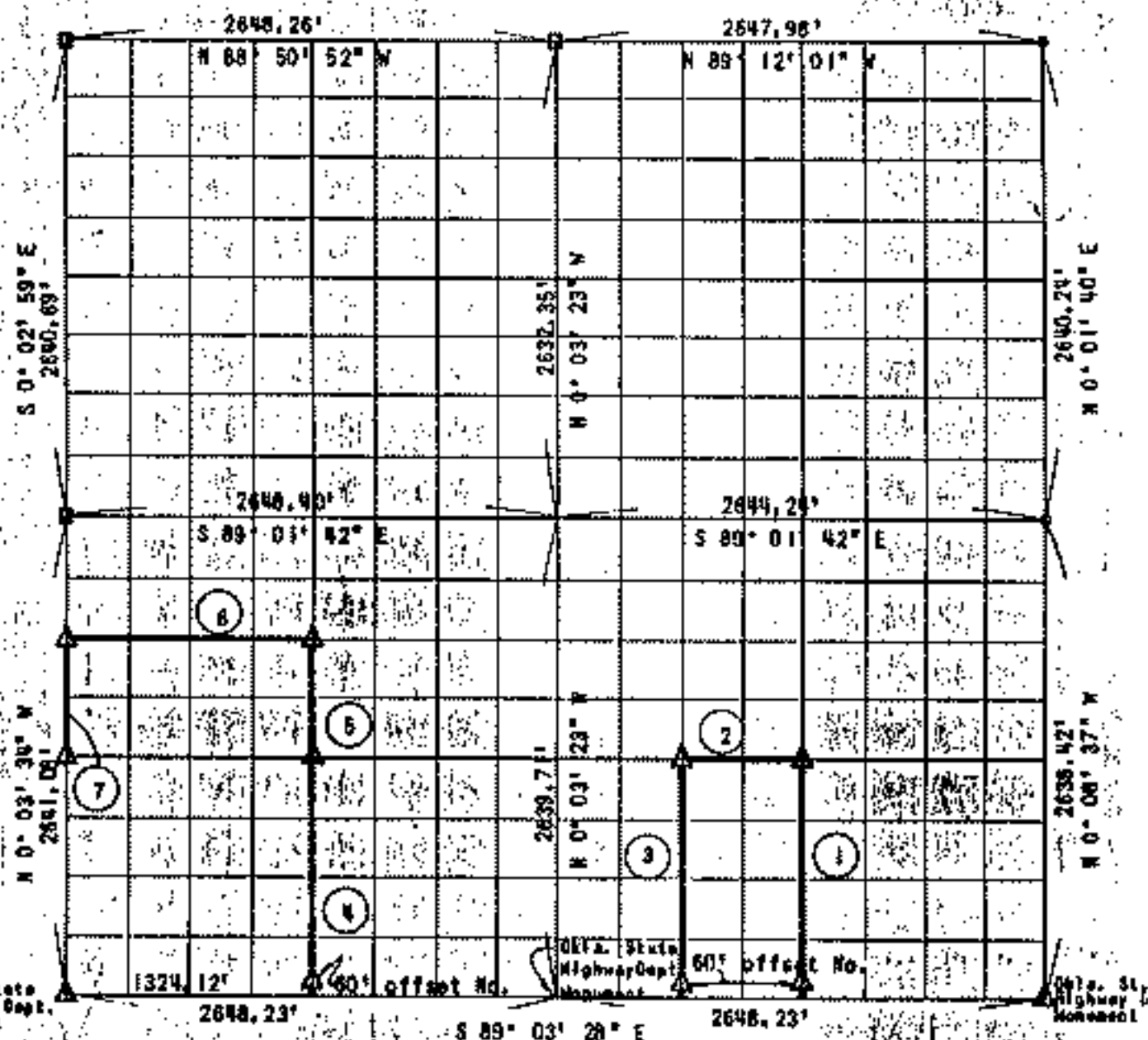
Performed Under Contract Number DACW 56-72-C-0117

Sec. 28

T-20-N

R-19-E

Mayes County



Course No.	Distance	Bearing
1	1318.16'	S 00° 06' 00" E
2	661.01'	S 89° 02' 35" E
3	1319.69'	N 00° 04' 41" W
4	1320.20'	S 00° 03' 28" E
5	660.43'	S 00° 03' 28" E
6	1324.50'	S 89° 02' 08" E
7	660.27'	N 00° 03' 34" W

Certificate of Survey

Field Book No. 5-1851

Date: September 29, 1951

I hereby certify that the above plot is a true and correct representation of the survey made in Section 28, T20N, R19E, Mayes County, Oklahoma.

SULLIVAN & GILBERT, INC.
 Consulting Engineers
 Under the Supervision of
 U. S. ARMY ENGINEER
 TULSA DISTRICT
 CORPS OF ENGINEERS

LEGEND

- ▲ Monument
- Original Corner
- Iron Pin
- Htg. W/M Marker

[Handwritten Signature]

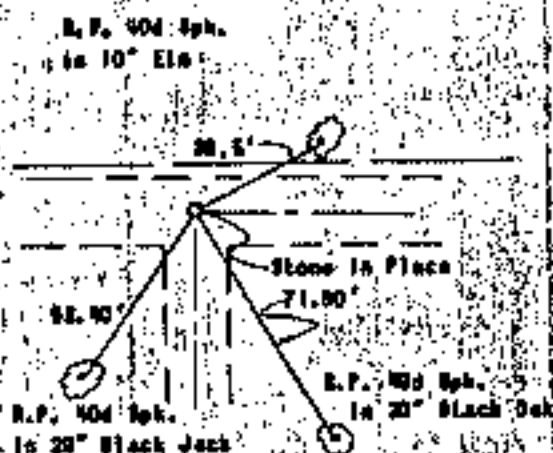
FORT GIBSON LAKE
GRAND RIVER, OKLAHOMA

SECTION AND QUARTER SECTION CORNER

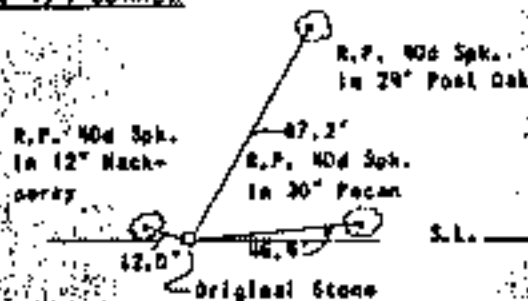
REFERENCES FOR

SECTION 28, T 20 N, R 19 E CHEROKEE COUNTY

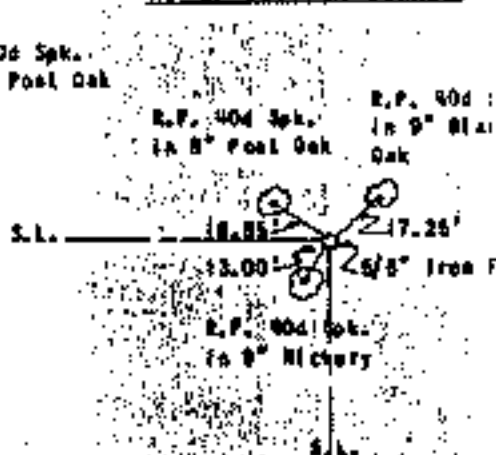
N. W. SECTION CORNER



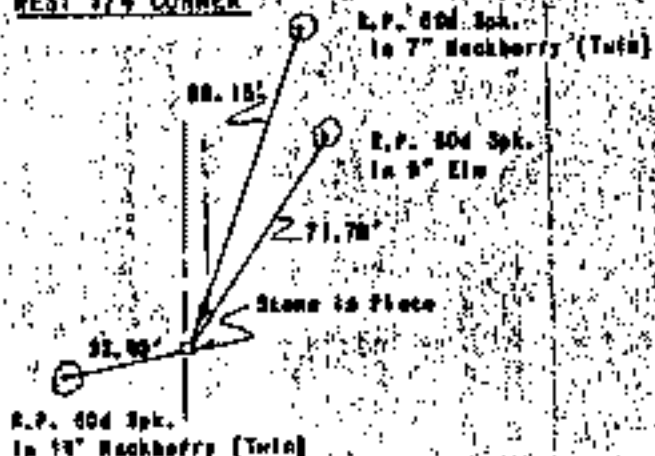
NO. 1/4 CORNER



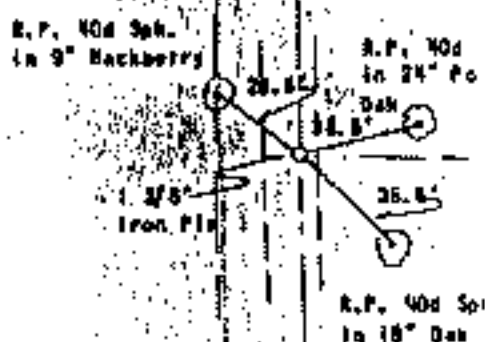
N. E. SECTION CORNER



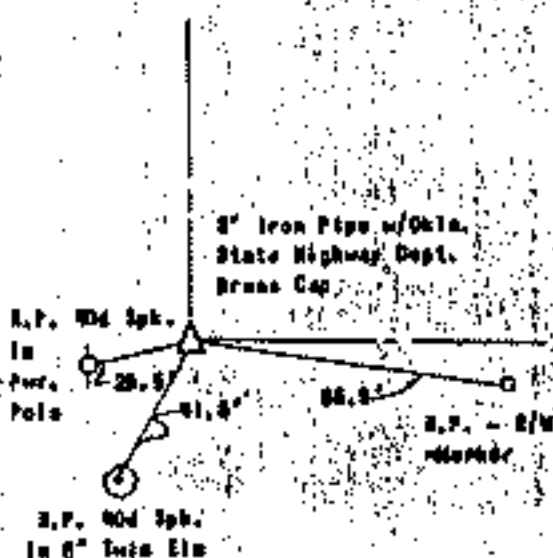
WEST 1/4 CORNER



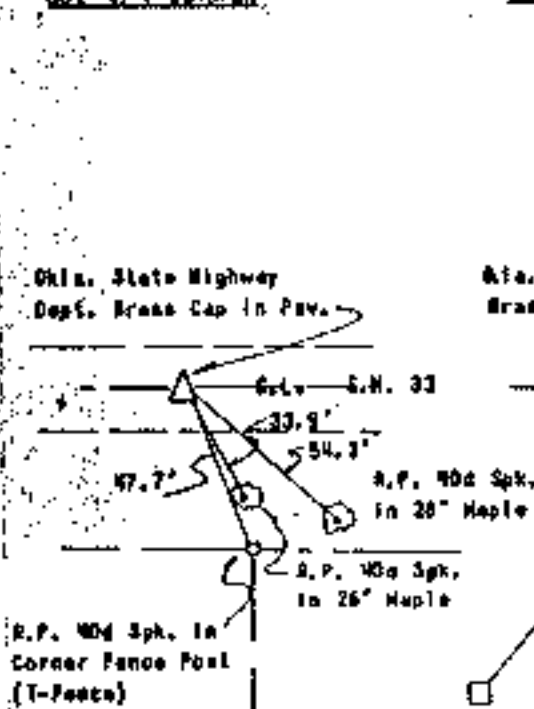
EAST 1/4 CORNER



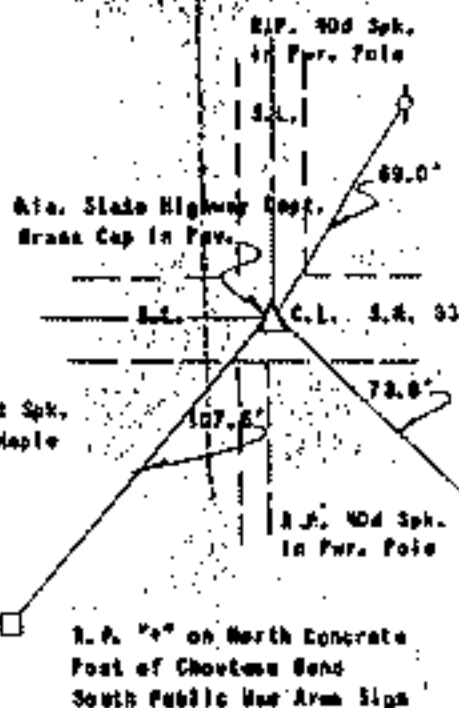
S. W. SECTION CORNER



SO. 1/4 CORNER



S. E. SECTION CORNER

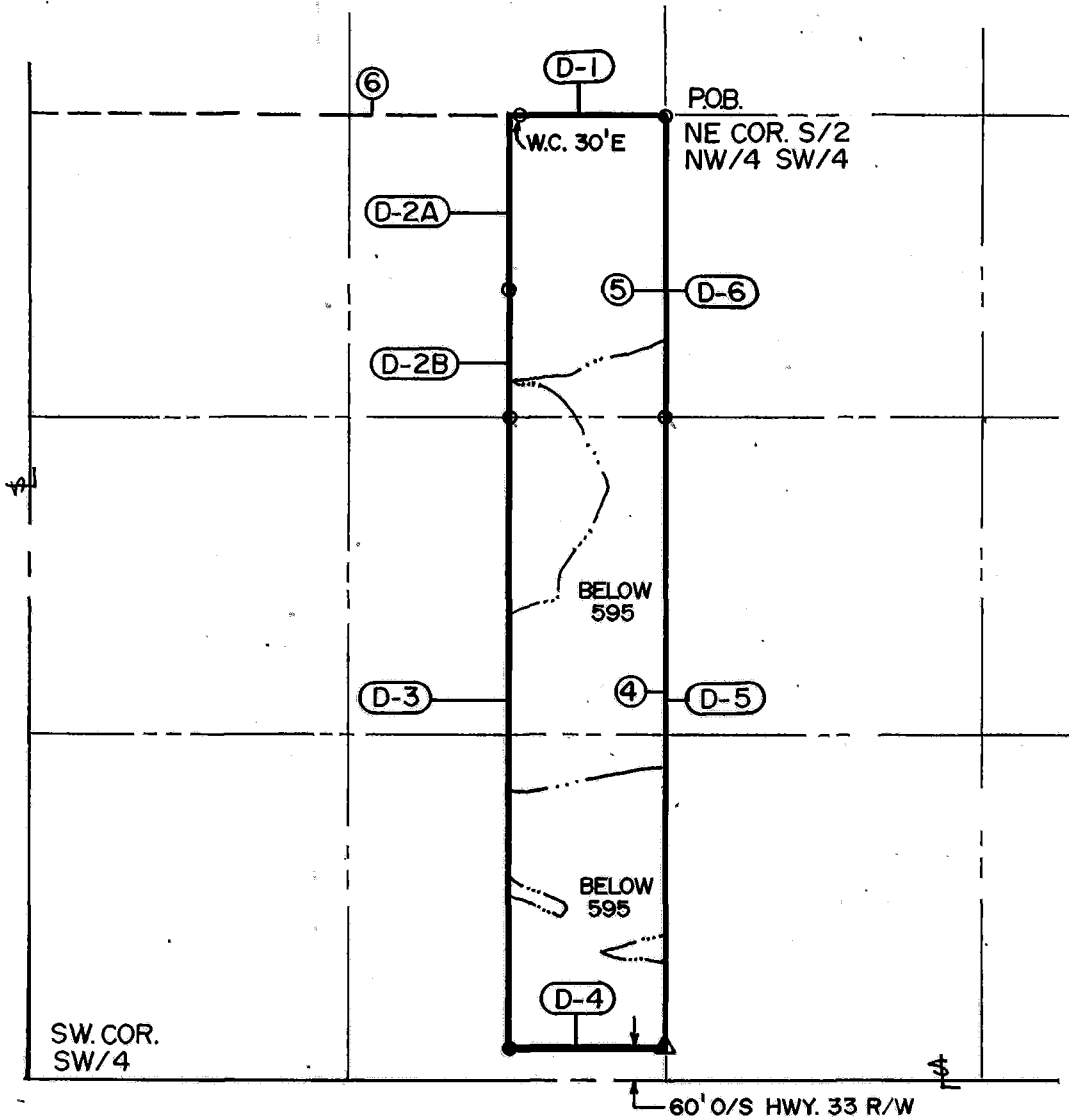


Scale: 1" = 30'
Date: September 29, 1972
Field Book No. 5-1051

**DISPOSAL TRACT SURVEY PLAT
FT. GIBSON DAM & RESERVOIR
LAKE FT. GIBSON, OKLA.**

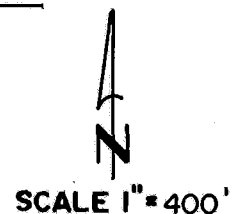
SEC. 28 , T 20 N , R 19 E , COUNTY MAYES

PARCEL NO. 52 Performed Under Contract No. DACA56-88-D-0050



- (D-1) DISPOSAL BNDRY. CRS.
- (4) ORIGINAL BNDRY. CRS.

TOTAL AREA: 14.59 AC.
FLOWAGE ESMNT: 5.00 AC
BELOW 595 ELEVATION



Course No.	Distance	Bearing	Course No.	Distance	Bearing
D-1	331.14	N 89°02'49" W			
D-2A	363.75	S 00°03'57" E			
D-2B	296.36	S 00°03'30" E			
D-3	1260.25	S 00°03'36" E			
D-4	331.04	S 89°03'22" E			
D-5	1260.21	N 00°03'28" W			
D-6	660.10	N 00°03'27" W			

Field Book No. 5-1851 Date JAN., 1989

CERTIFICATE OF SURVEY ENTZ ENGINEERING & ASSOCIATES INC. AND HUFFMAN SURVEYING CO., INC.

I Hereby Certify That The Above Plat is a True and Correct Representation of the Survey Made in Sec. 28 T20N, R19E.

A Joint Venture for

U.S. ARMY ENGINEER DISTRICT, TULSA
CORPS OF ENGINEERS

— LEGEND —

- Δ MONUMENT
- ORIGINAL CORNER
- IRON PIN/CAP

Ron Huffman
Ron Huffman L.S. 1020