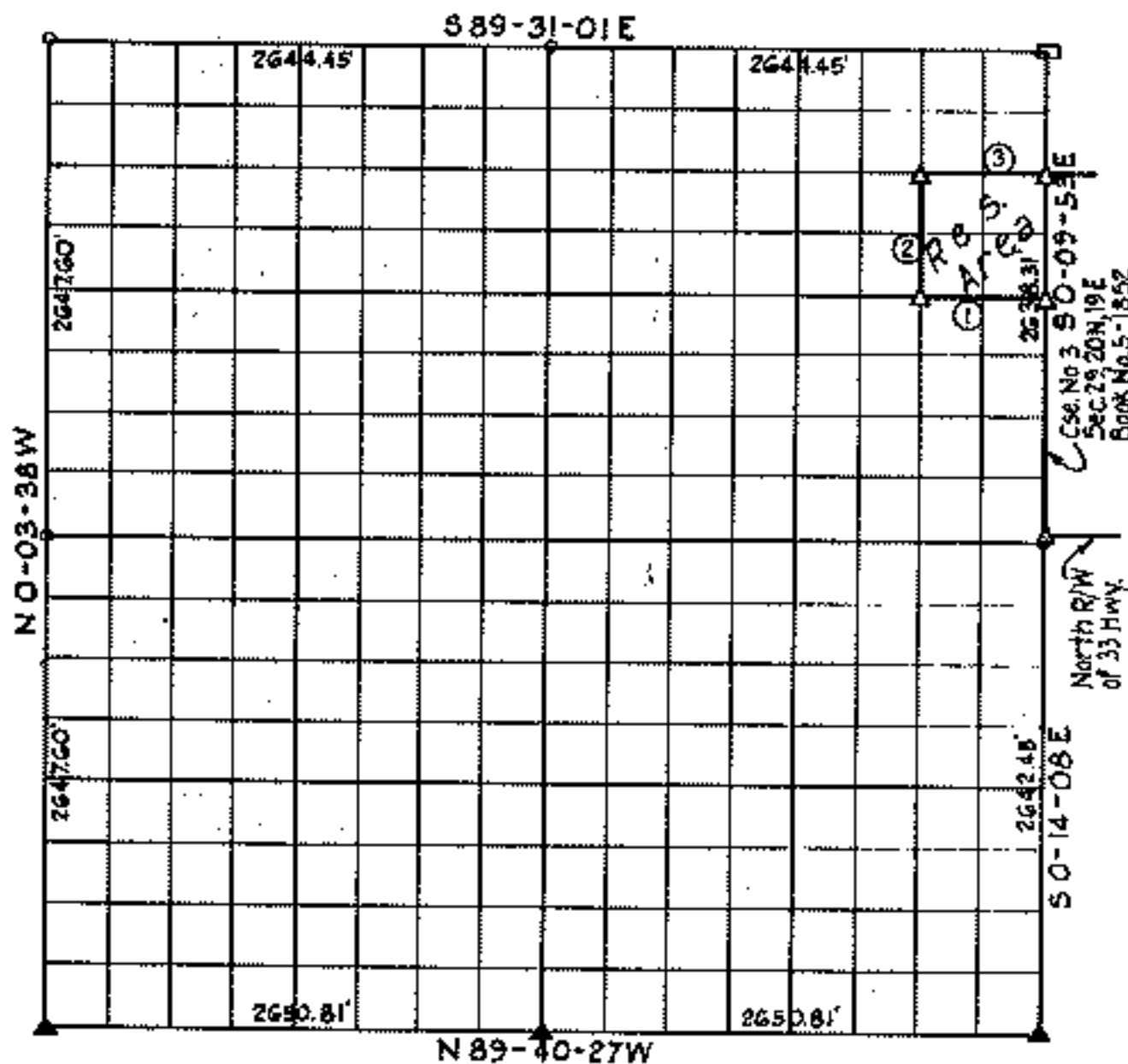


FORT GIBSON LAKE

AREA

Performed under Contract Number DA1W56-73-C-0230

SEC. 30 T. 20N. R. 19E. COUNTY MAYES



Course No.	Distance	Bearing	Course No.	Distance	Bearing
1	661.30	N 89° 31' 03" E			
2	660.20	N 0° 09' 22" E			
3	660.30	S 89° 32' 32" E			

Book No. 5-1866

Date: October, 1973

I, Charles J. Finkles, hereby certify that the above plat is a true and correct representation of the survey made in Section 30, T20N, R19E.

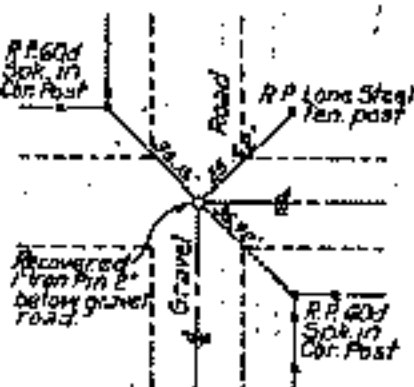
- LEGEND**
- ▲ Monument
  - Original Stone
  - Iron Pin
  - ▲ n. by O.H.D.

*Charles J. Finkles*  
 Registered Land Surveyor No. 20

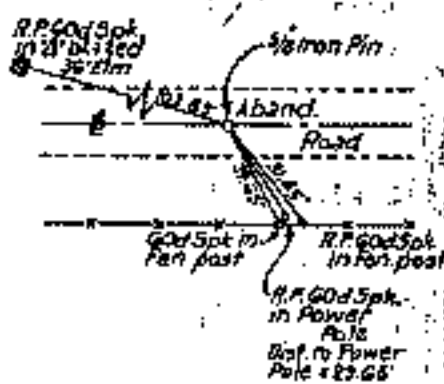
FORT GIBSON LAKE  
AREA "I"

SECTION AND QUARTER SECTION CORNER  
REFERENCES FOR  
SECTION 30, T 20 N, R 19 E, MAYES COUNTY

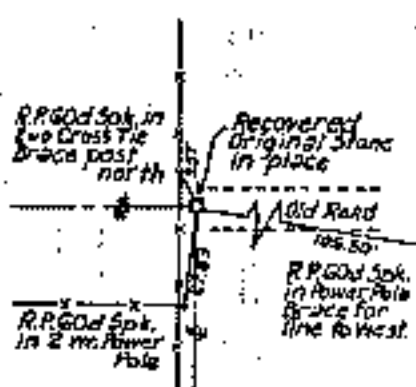
N.W. SECTION CORNER



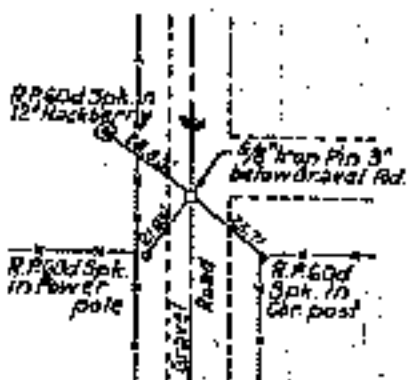
NO. 1/4 CORNER



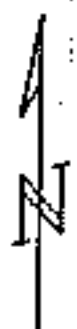
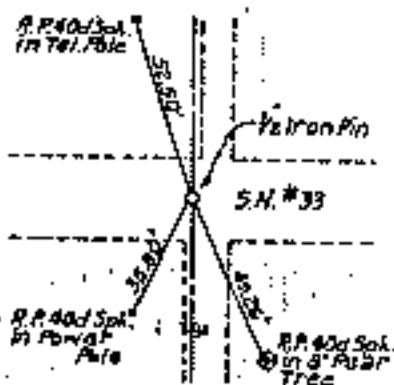
N.E. SECTION CORNER



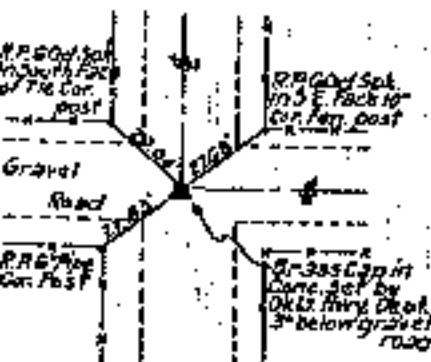
WEST 1/4 CORNER



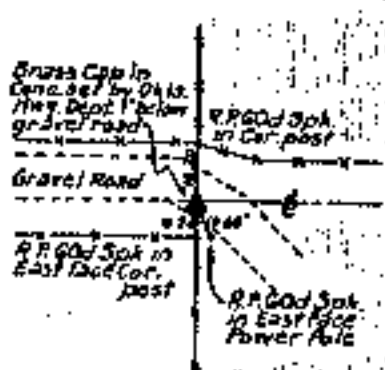
EAST 1/4 CORNER



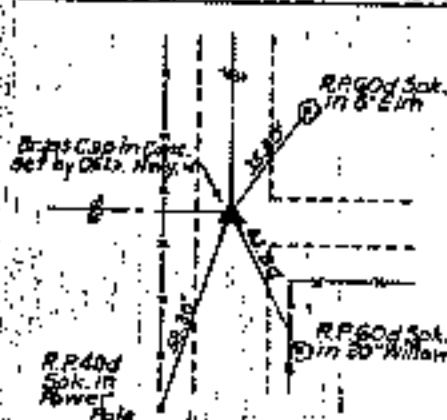
S.W. SECTION CORNER



SOUTH 1/4 CORNER



S.E. SECTION CORNER



Scale: 1" = 50'  
Date: June-October 1973  
Field Book No. 5-1866