

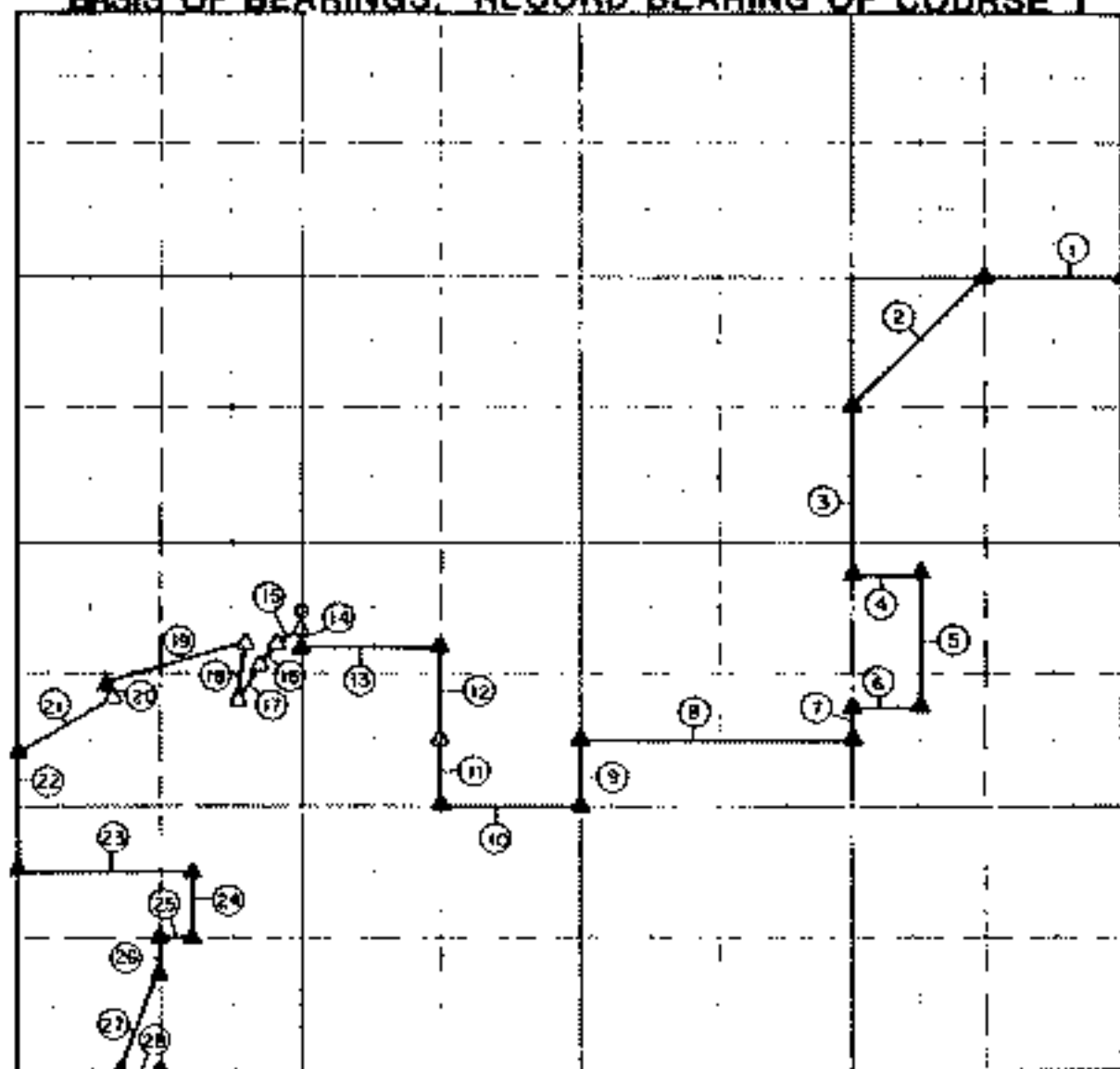
RETRACEMENT SURVEY PLAT

LAKE FORT GIBSON, OKLAHOMA

PERFORMED UNDER CONTRACT NUMBER DACA56-65-D-0078

SEC. 34, T 20 NORTH, R 19 EAST COUNTY MAYES

BASIS OF BEARINGS: RECORD BEARING OF COURSE 1



Course No.	Distance	Bearing	Course No.	Distance	Bearing
1	863.82	N 89° 28' 00" W	16	136.87	S 80° 27' 58" W
2	938.35	S 45° 37' 39" W	16	128.07	S 38° 42' 16" W
3	827.76	S 00° 38' 04" W	17	217.00	S 33° 47' 18" W
4	331.46	S 69° 24' 53" E	18	278.00	N 08° 17' 17" E
5	882.80	S 00° 36' 09" W	19	811.60	S 69° 17' 19" W
6	331.03	N 89° 19' 59" W	20	19.27	S 18° 42' 27" E
7	185.69	S 00° 33' 23" W	21	388.48	S 52° 35' 10" W
8	1324.06	N 89° 20' 16" W	22	588.28	S 00° 22' 38" W
9	330.41	S 00° 30' 29" W	23	627.78	S 89° 22' 49" E
10	882.34	N 89° 17' 29" W	24	329.30	S 00° 26' 50" W
11	329.85	N 00° 27' 39" E	25	185.49	N 89° 21' 33" W
12	482.08	N 00° 30' 18" E	26	184.60	S 00° 26' 03" W
13	877.87	N 87° 01' 02" W	27	551.89	S 27° 15' 23" W
14	77.34	N 00° 05' 27" W	28	249.06	S 89° 13' 24" E

Field Book No. 5-1548 & 5-2019 Date AUGUST, 1889

CRAFTON, TULL, SPANN & YOE, INC.

under the supervision of
U.S. ARMY ENGINEER DISTRICT
TULSA CORPS OF ENGINEERS

LEGEND

- △ SET MONUMENT
- ▲ FOUND MONUMENT
- REFERENCE MONUMENT, SET

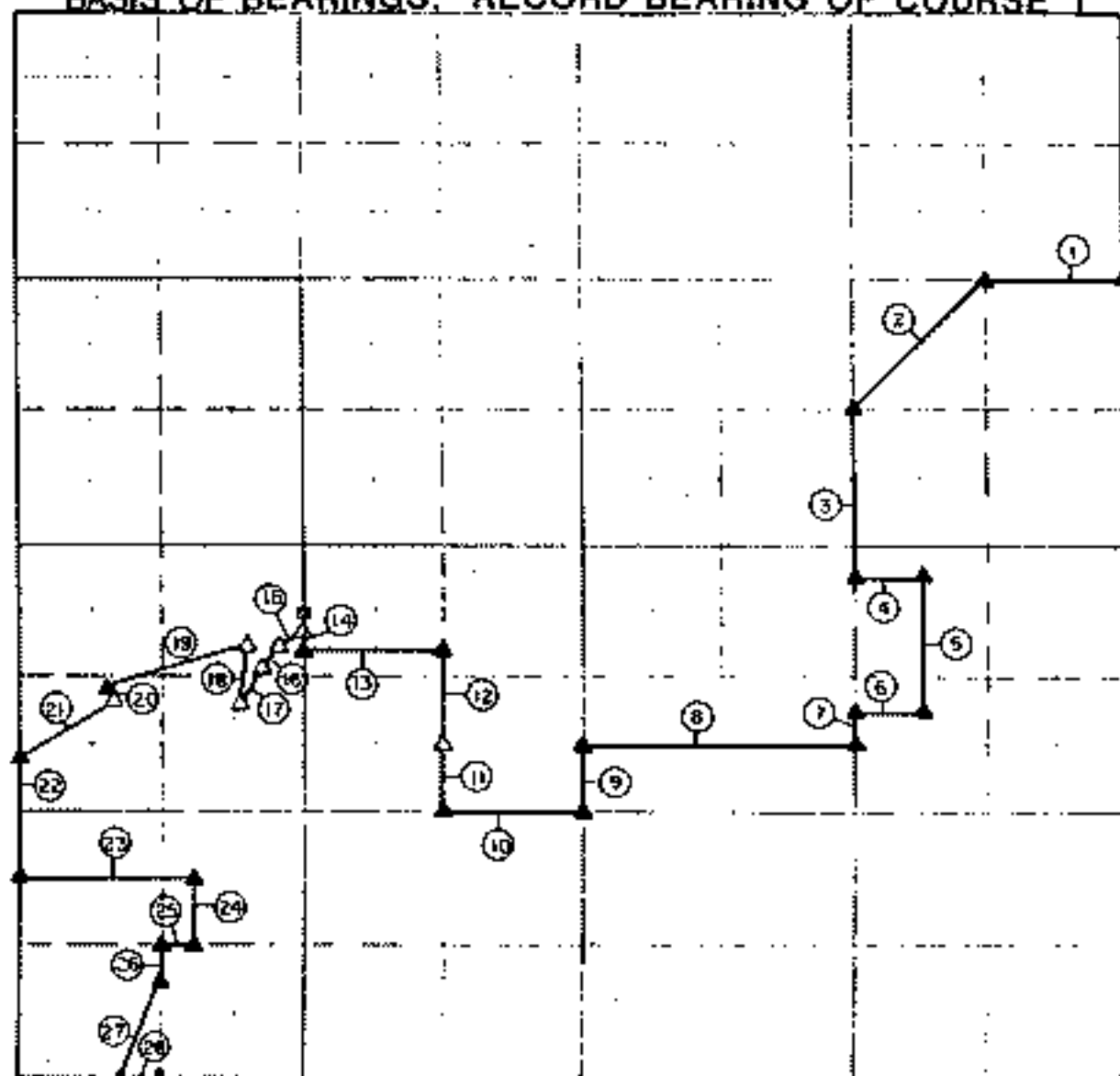
RETRACEMENT SURVEY PLAT

LAKE FORT GIBSON, OKLAHOMA

PERFORMED UNDER CONTRACT NUMBER DACA56-65-D-0078

SEC. 34, T 20 NORTH, R 19 EAST COUNTY MAYES

BASIS OF BEARINGS: RECORD BEARING OF COURSE 1



Course No.	Distance	Bearing	Course No.	Distance	Bearing
1	663.82	N 89° 29' 00" W	15	138.87	S 60° 27' 58" W
2	938.35	S 45° 37' 39" W	16	128.07	S 38° 42' 16" W
3	827.76	S 00° 36' 04" W	17	217.09	S 33° 47' 18" W
4	331.46	S 89° 24' 53" E	18	278.00	N 08° 17' 17" E
5	662.80	S 00° 36' 09" W	19	811.60	S 69° 17' 19" W
6	331.03	N 89° 19' 59" W	20	19.27	S 19° 49' 27" E
7	165.69	S 00° 33' 23" W	21	388.49	S 62° 35' 10" W
8	1324.86	N 89° 20' 16" W	22	598.28	S 00° 22' 39" W
9	330.41	S 00° 30' 23" W	23	827.79	S 89° 22' 49" E
10	662.34	N 89° 17' 29" W	24	329.30	S 00° 26' 59" W
11	329.85	N 00° 27' 39" E	25	165.49	N 89° 21' 33" W
12	462.09	N 00° 30' 18" E	26	164.80	S 00° 26' 03" W
13	677.67	N 87° 01' 02" W	27	561.68	S 27° 15' 23" W
14	77.34	N 00° 05' 27" W	28	249.09	S 89° 13' 24" E

Field Book No 5-1548 & Date AUGUST, 1966
5-2019

CRAFTON, TULL, SPANN & YOE, INC.

under the supervision of
U.S. ARMY ENGINEER DISTRICT

REGISTERED PROFESSIONAL ENGINEERS

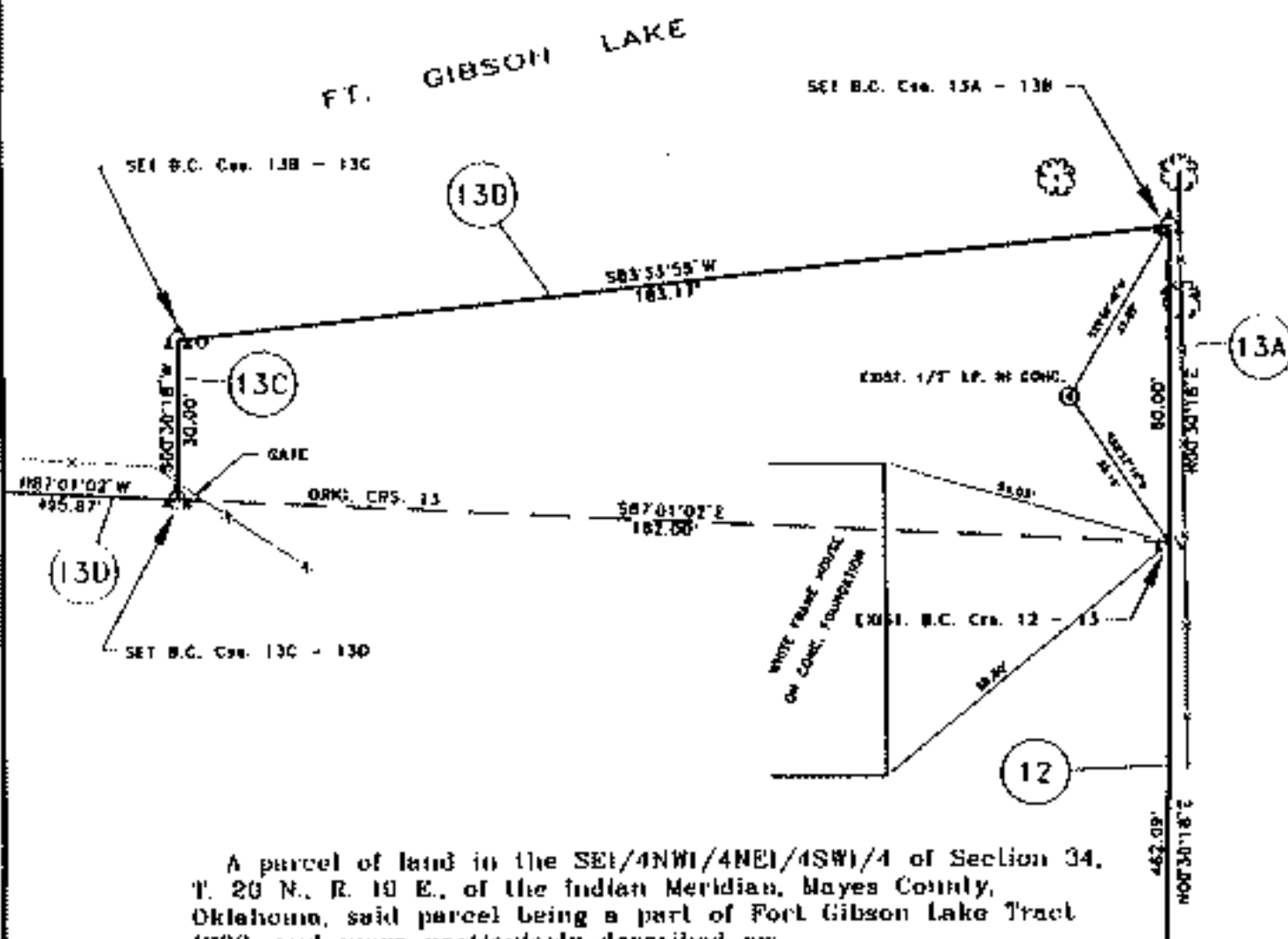
(175)

○ SET MONUMENT
▲ FOUND MONUMENT
□ REFERENCE MONUMENT, SET

PARTIAL BOUNDARY SURVEYS
 FT. GIBSON DAM & RESERVOIR
 LAKE FT. GIBSON, OKLAHOMA

Performed Under Contract Number DACW60-01-D-0008

SEC. 34, T. 20 N., R. 10 E., MAYES COUNTY



A parcel of land in the SE1/4NW1/4NE1/4SW1/4 of Section 34, T. 20 N., R. 10 E., of the Indian Meridian, Mayes County, Oklahoma, said parcel being a part of Fort Gibson Lake Tract 1790, and more particularly described as:

Beginning at the Southeast corner of the North 8 acres of the NW1/4NE1/4SW1/4 of said Section 34;
 thence N 00° 30' 18" E, 60.00 feet;
 thence S 03° 33' 55" W, 103.17 feet, more or less, to the Easterly right-of-way of an existing driveway;
 thence S 00° 30' 18" W, 30.00 feet to a point on the South line of said North 8 acres of the NW1/4NE1/4SW1/4, said line being the Government boundary line;
 thence S 87° 01' 02" E, along said line, 182.00 feet, more or less, to the Point Beginning.
 Containing 0.19 acres, more or less.



Field Book No. 0-1548 Date MARCH, 1992

ENTZ ENGINEERING & ASSOCIATES INC. AND
 HUFFMAN SURVEYING CO., INC.
 - A Joint Venture -
 for
 U. S. ARMY ENGINEER DISTRICT, TULSA
 CORPS OF ENGINEERS

-- LEGEND --

- ▲ MONUMENT SET
- △ MONUMENT FID
- ⊠ ORIGINAL CORNER
- ⊙ IRON PIN

CERTIFICATE OF SURVEY
 I hereby Certify That The
 Above Plat is a True and
 Correct Representation of
 the Survey Made in
 Sec. 34, T. 20 N., R. 10 E.

Roy W. Entz
 Roy Entz L.S. 319

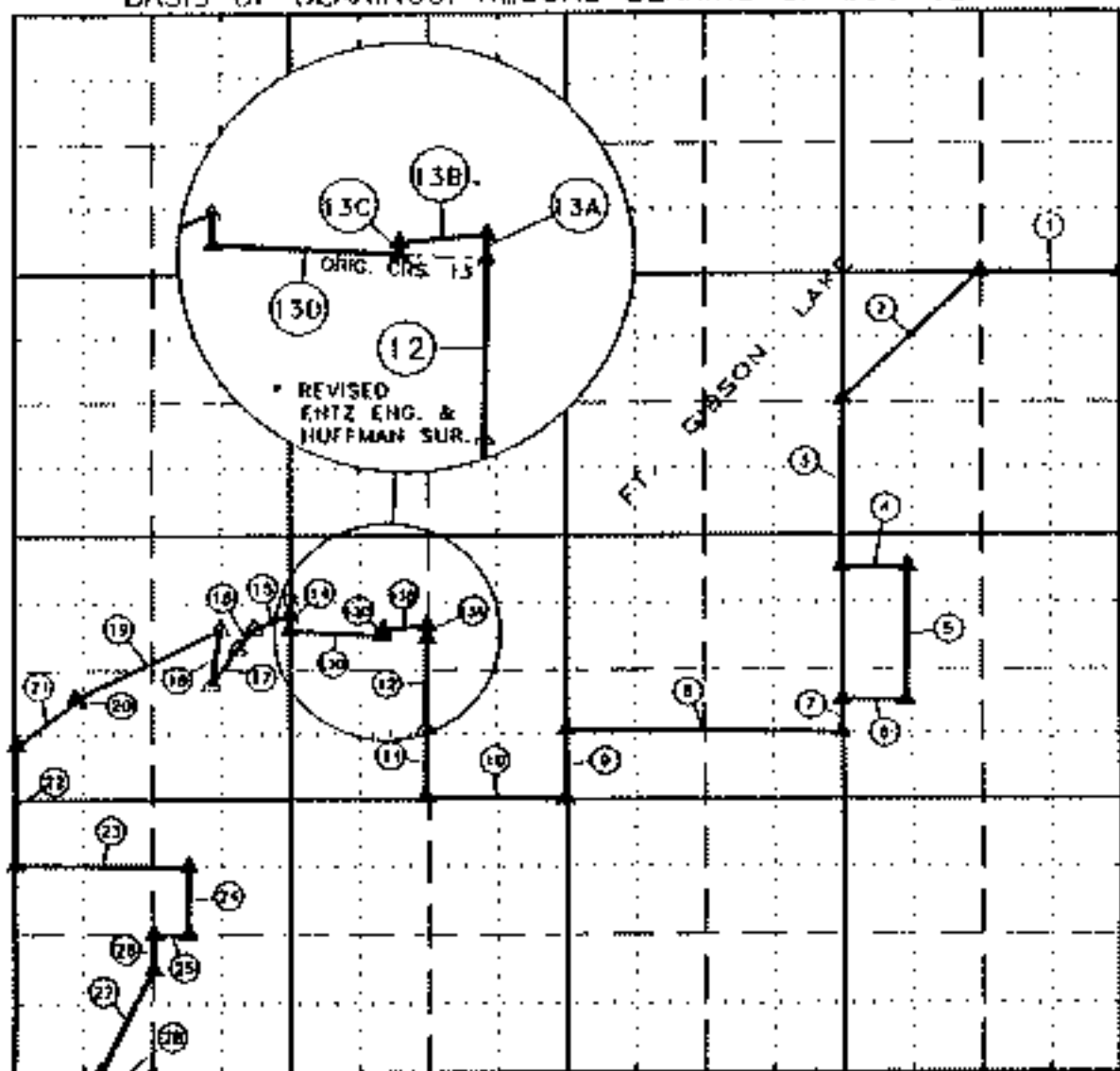
RETRACEMENT SURVEY PLAT

LAKE FORT GIBSON, OKLAHOMA

PERFORMED UNDER CONTRACT NUMBER DACAS6-85-D-0078

SEC. 34, T 20 NORTH, R 19 EAST COUNTY MAYES

BASIS OF BEARINGS: RECORD BEARING OF COURSE 1



Course No.	Distance	Bearing	Course No.	Distance	Bearing
1	663.82'	N 89°28'00" W	17	217.00'	S 33°47'18" W
2	938.35'	S 45°37'39" W	18	278.00'	N 08°17'17" E
3	827.76'	S 00°36'04" W	19	811.80'	S 69°17'19" W
4	331.46'	S 89°24'53" E	20	19.27'	N 19°49'27" W
5	662.80'	S 00°36'09" W	21	368.49'	N 52°35'10" E
6	331.03'	N 89°19'59" W	22	595.29'	N 00°22'39" E
7	165.69'	S 00°33'23" W	23	827.79'	N 89°22'49" W
8	1324.96'	N 89°20'16" W	24	329.30'	N 00°26'50" E
9	330.41'	S 00°30'23" W	25	165.49'	S 89°21'33" E
10	662.54'	N 89°17'29" W	26	164.80'	N 00°26'03" E
11	329.85'	N 00°27'39" E	27	551.89'	N 27°15'23" E
12	462.09'	N 00°30'18" E	28	249.09'	N 89°13'24" W
13	677.87'	N 87°01'02" W	+13A	60.00'	N 00°30'18" E
14	77.34'	N 00°05'27" W	+13B	183.17'	S 83°33'55" W
15	138.87'	S 60°27'58" W	+13C	30.00'	S 00°30'18" W
16	128.07'	S 38°42'15" W	+13D	495.87'	N 87°01'02" W

Field Book No. 15-154B & Date AUGUST, 1986
15-2019

*REV. FEB., 1992
BY: ENIZ ENGINEERING
& HUFFMAN SURVEYING

CRAFTON, TULL, SPANN & YOE, INC.

under the supervision of
U.S. ARMY ENGINEER DISTRICT
TULSA CORPS OF ENGINEERS

LEGEND

- △ SEE MONUMENT
- ▲ FOUND MONUMENT
- REFERENCE MONUMENT SEE