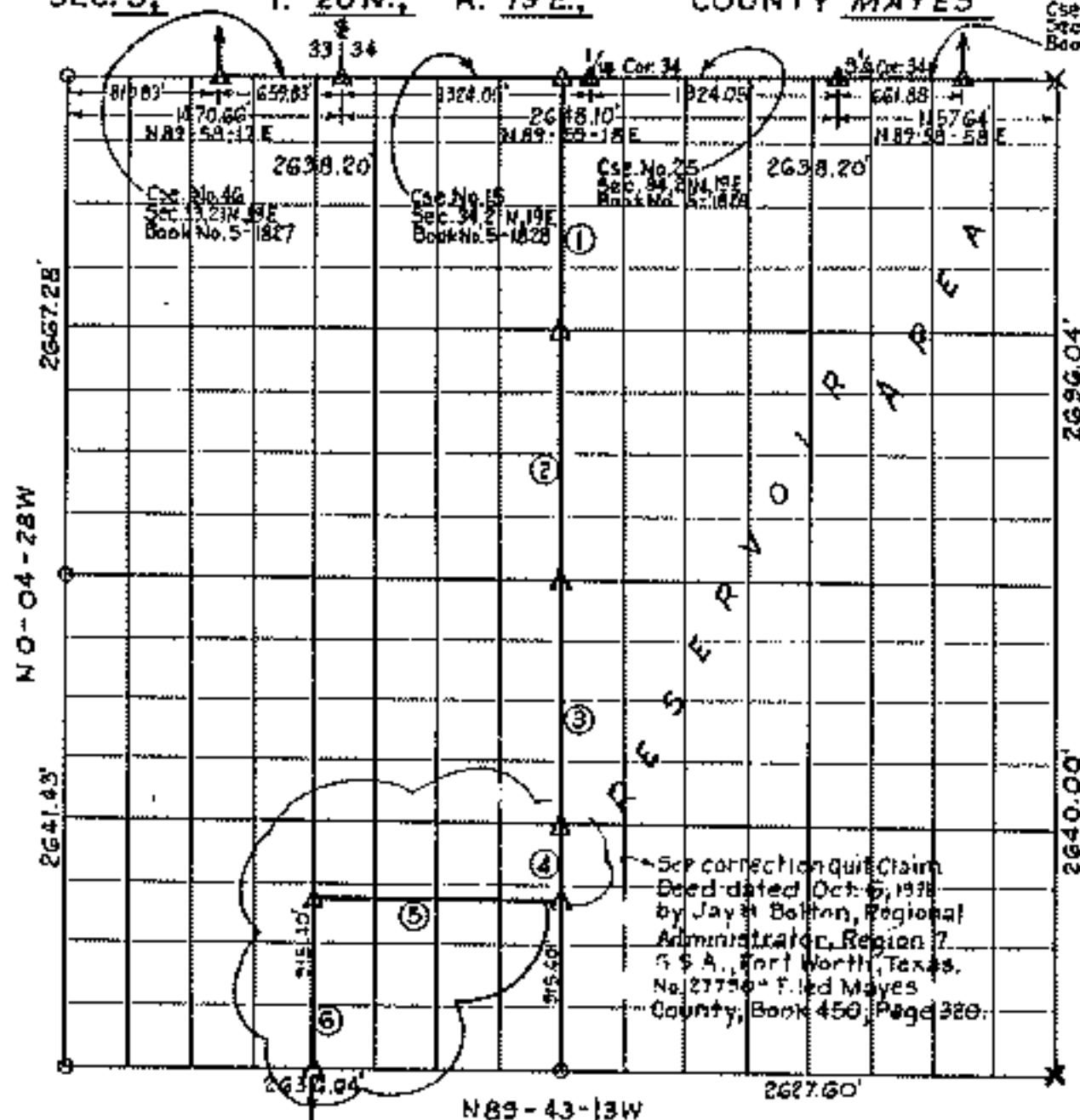


PARTIAL BOUNDARY SURVEY FORT GIBSON LAKE, AREA "I" OKLAHOMA

Performed under Contract Number DACW56-76-C-0113
SEC. 3, T. 20N., R. 19E., COUNTY MAYES

Cse. No. 24
Sec. 34, T. 20N., R. 19E.
Book No. 5-1828



See correction quit Claim
Deed dated Oct. 6, 1976
by Jay A. Bolton, Regional
Administrator, Region 7
S.S.A., Fort Worth, Texas.
No. 27750- Filed Mayes
County, Book 450, Page 320.

See Curry Engineering Co.
Book No. 5-1547 For East Section
Line, Monuments and Witnesses
by them. Filed in Mayes County,
Book 932, Page 334.

Course No.	Distance	Bearing	Course No.	Distance	Bearing
1	1361.47'	S 0° 03' 06" E			
2	1320.36'	S 0° 03' 06" E			
3	1320.36'	S 0° 03' 06" E			
4	403.78'	S 0° 03' 06" E			
5	1317.27'	N 89° 43' 13" W			
6	915.40'	S 0° 03' 45" E			

Certificate of Survey

▲ Mon. by Holway Engr., Inc.

I hereby certify that the above plat is a true and correct representation of the survey made in Section 3, T. 20N., R. 19E., Mayes County, Oklahoma.

Sheet 1 of 2

Charles J. Finklea
Charles J. Finklea
Registered Land Surveyor No. 5

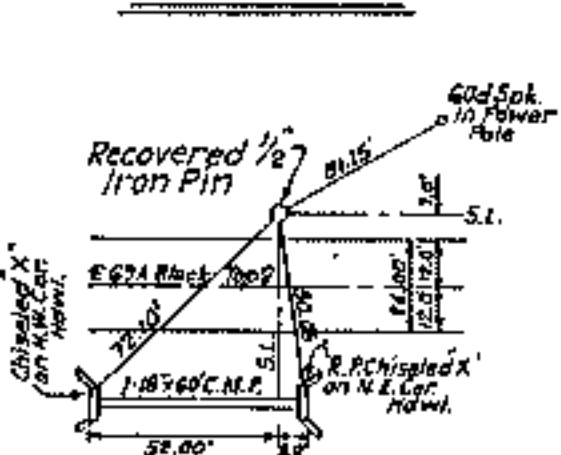
Scale: 1:10,000
Date: Feb.-July, 1976
Field Book No. 5-1972

- Legend
- ▲ Monument
 - Orig. Corner
 - Iron Pin
 - Mon. by O.H.D.

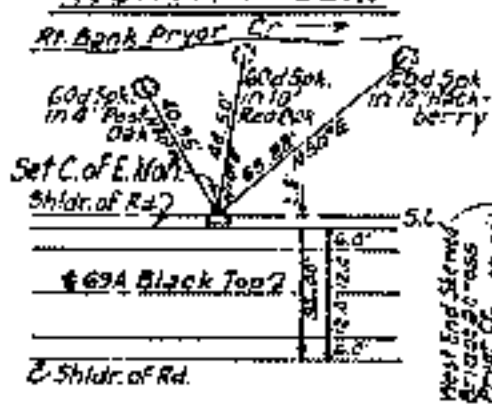
FORT GIBSON LAKE, AREA "I" OKLAHOMA

SECTION AND QUARTER SECTION CORNER REFERENCES FOR SEC. 3, T. 20N., R. 19E., COUNTY MAYES

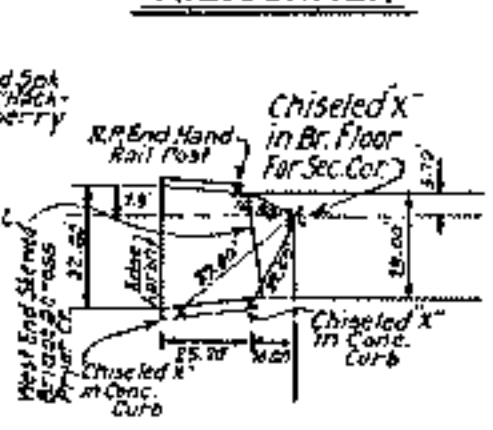
N.W. CORNER



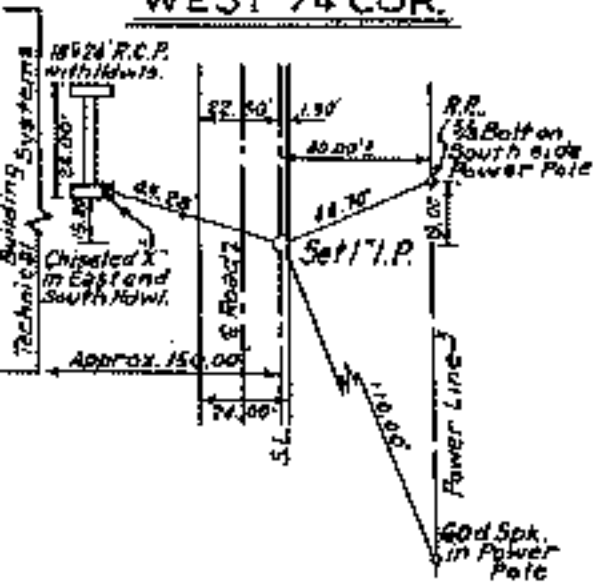
NORTH 1/4 COR.



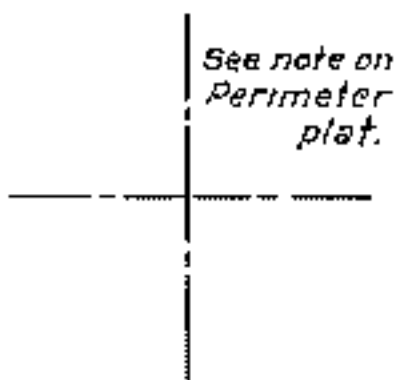
N.E. CORNER



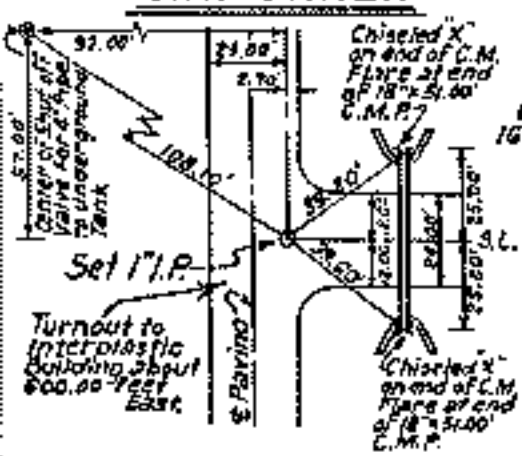
WEST 1/4 COR.



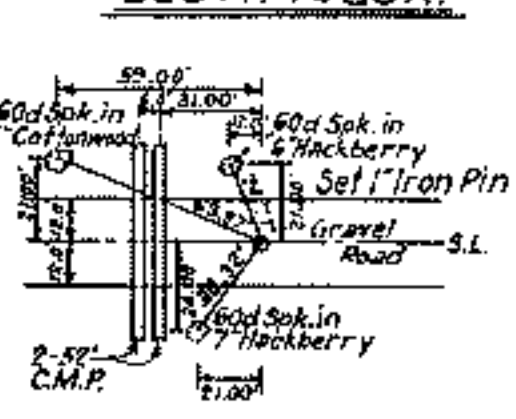
EAST 1/4 COR.



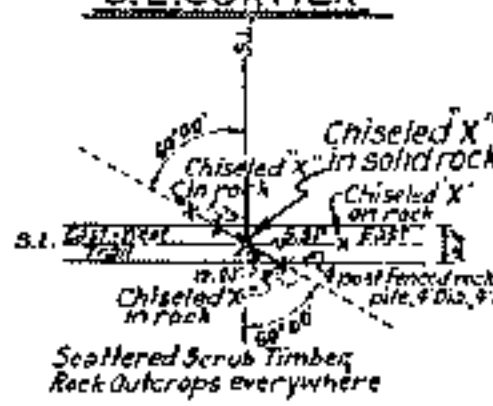
S.W. CORNER



SOUTH 1/4 COR.



S.E. CORNER



Certificate of Survey

I hereby certify that the above plat is a true and correct representation of the survey made in Section 3, T. 20 N., R. 19 E., Mayes County, Oklahoma.

Charles J. Finklea
Charles J. Finklea
Registered Professional Surveyor No. 15

Sheet 2 of 2

Scale: - 1" = 50'
Date: - Feb. - July, 1971
Field Book No. 5-190

Legend

- △ Monument
- Orig. Corner
- Iron Pin
- 400 by 0.111