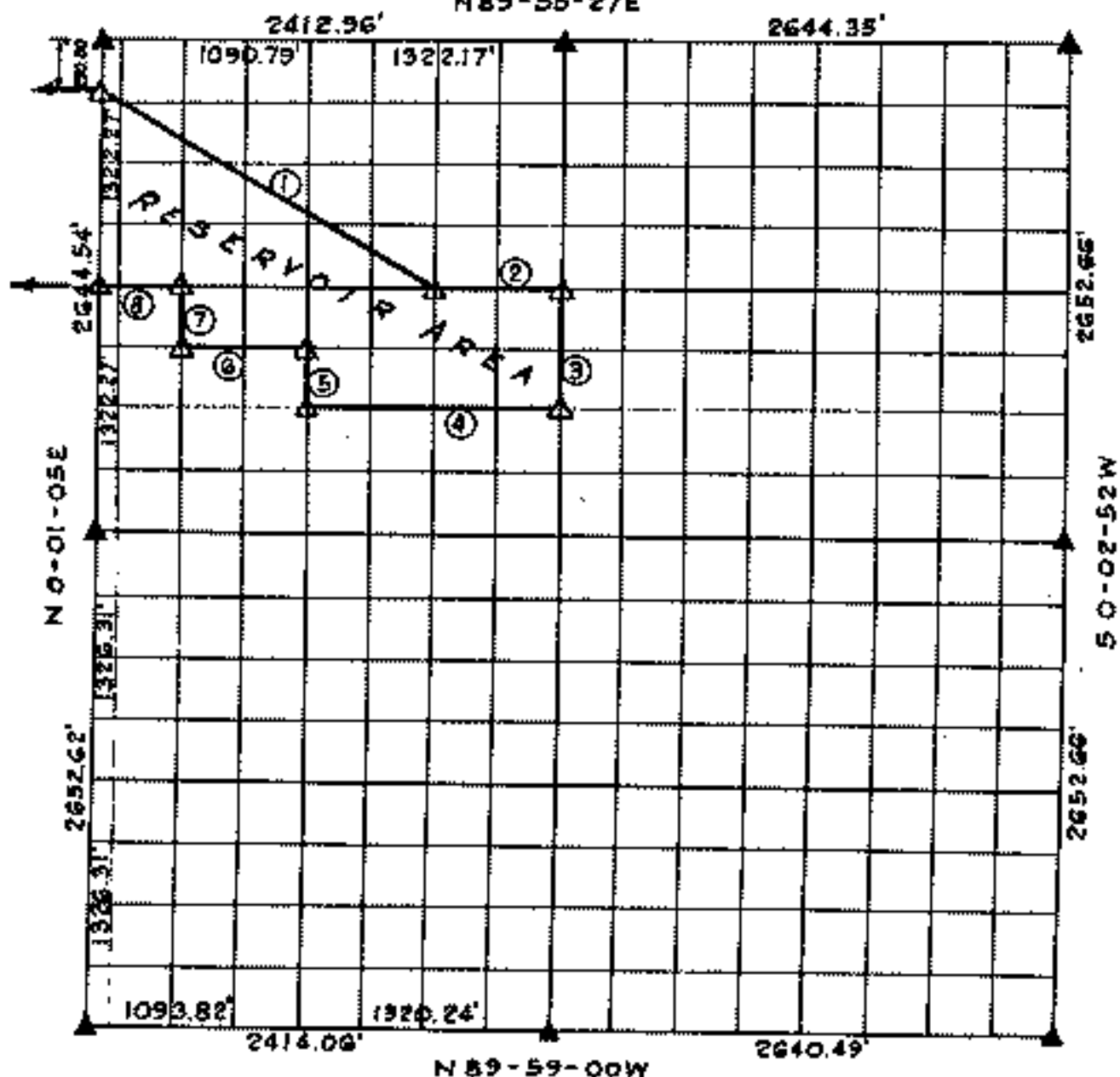


FORT GIBSON LAKE, AREA "I" OKLAHOMA

Performed under Contract Number DACW56-76-C-0113
SEC. 19, T. 20 N., R. 20 E., COUNTY MAYES

N 89-55-27 E



N 89-59-00 W

Course No.	Distance	Bearing	Course No.	Distance	Bearing
1	2033.13'	S 59° 30' 44" E			
2	673.10'	N 89° 58' 31" E			
3	662.53'	S 0° 00' 32" W			
4	1321.40'	N 89° 59' 56" W			
5	330.81'	N 0° 00' 49" W			
6	660.76'	S 89° 59' 18" W			
7	330.66'	N 0° 00' 08" E			
8	430.85'	S 89° 58' 31" W			

Certificate of Survey

I hereby certify that the above is a true and correct representation of the survey made in Section 19, T. 20 N., R. 20 E., Mayes County, Oklahoma.

Charles J. Finklea
Charles J. Finklea
Registered Surveyor No. 35

Scale: 1:10,000
Date: Feb-July, 1976
Field Book No. 5-1910

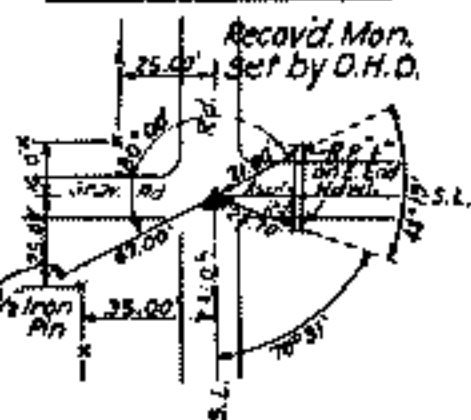
Sheet 1 of 2

Legend

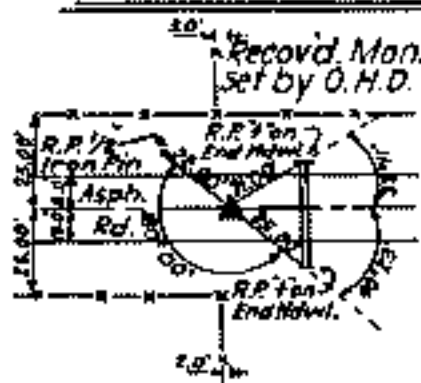
- △ Monument
- Orig. Corner
- Iron Pin
- ▲ by O.H.D.

FURT GIBSON LAKE, AREA
OKLAHOMA
SECTION AND QUARTER SECTION CORNER
REFERENCES FOR
SEC. 19, T. 20N., R. 20E., COUNTY MAYES

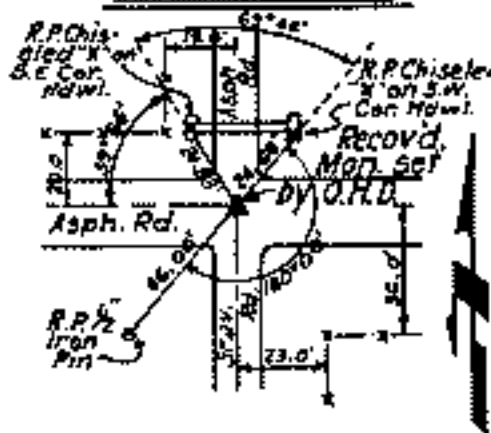
N.W. CORNER



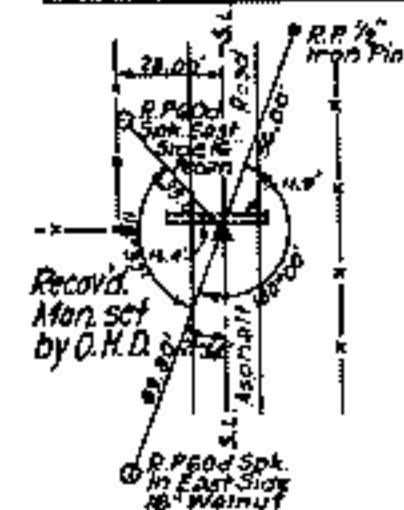
NORTH 1/4 COR.



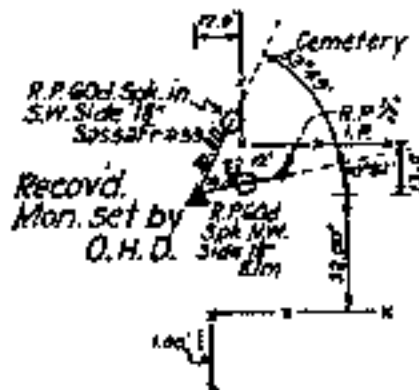
N.E. CORNER



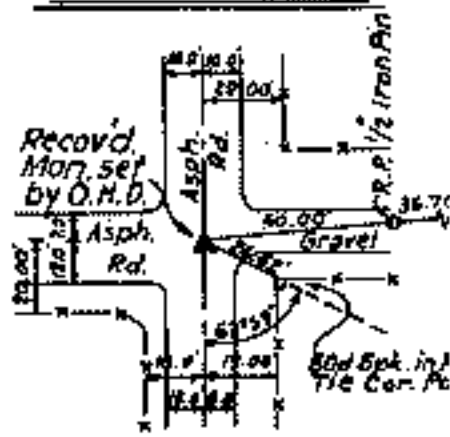
WEST 1/4 COR.



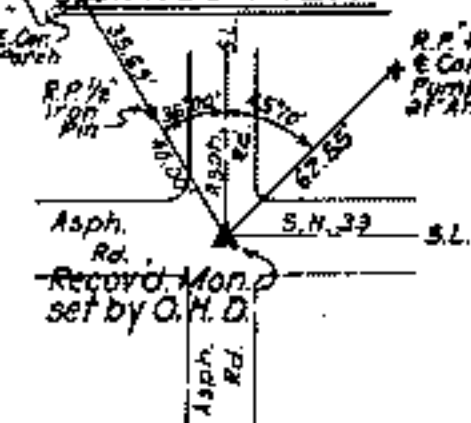
CEN. 1/4 COR.



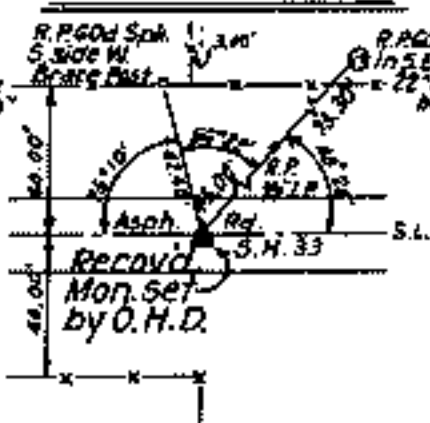
EAST 1/4 COR.



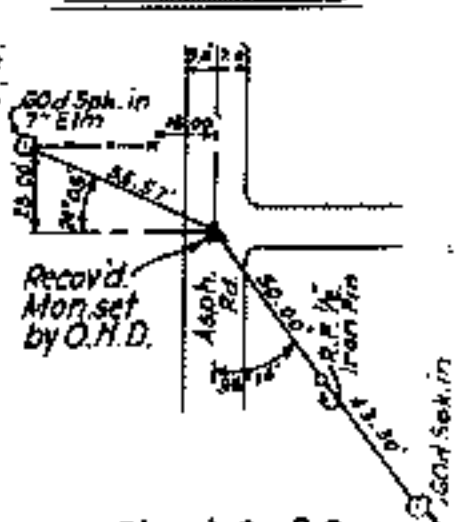
S.W. CORNER



SOUTH 1/4 COR.



S.E. CORNER



Sheet 2 of 2

Certificate of Survey

I hereby certify that the above is a true and correct representation of the survey made in Section 19, T. 20 N., R. 20 E., Mayes County, Oklahoma.

Charles J. Finklea
 Charles J. Finklea
 Registered Land Surveyor No. 3E

Scale: 1" = 50'
 Date: Feb. - July, 1976
 Field Book No. 5-15

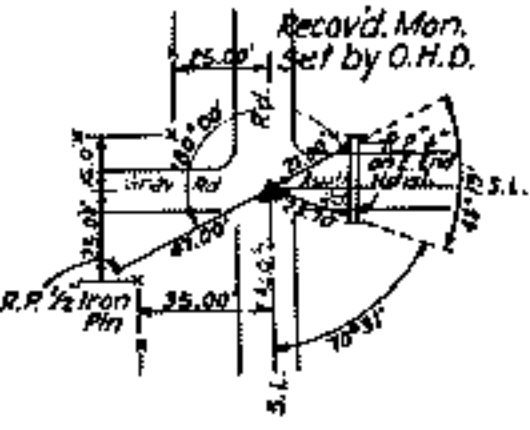
Legend

- △ Monument
- Orig. Corner
- Iron Pin
- ▲ Mon. by O.H.D.

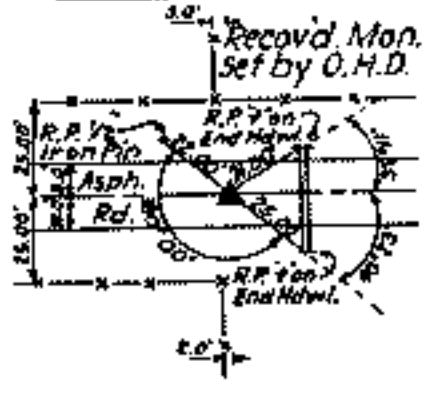


OKLAHOMA
SECTION AND QUARTER SECTION CORNER
REFERENCES FOR
SEC. 19, T. 20 N., R. 20 E., COUNTY MAYES

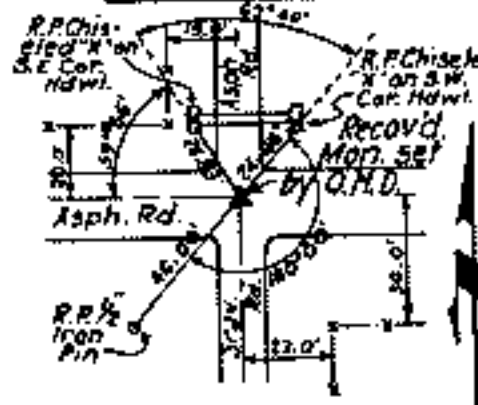
N.W. CORNER



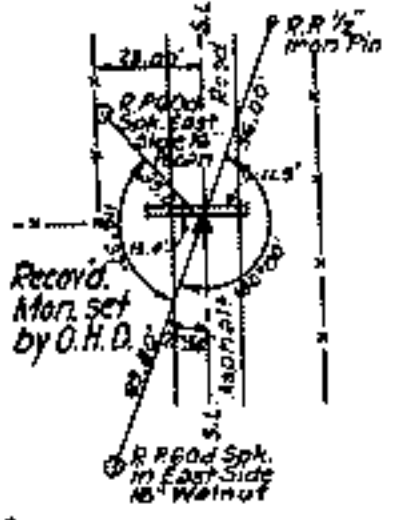
NORTH 1/4 COR.



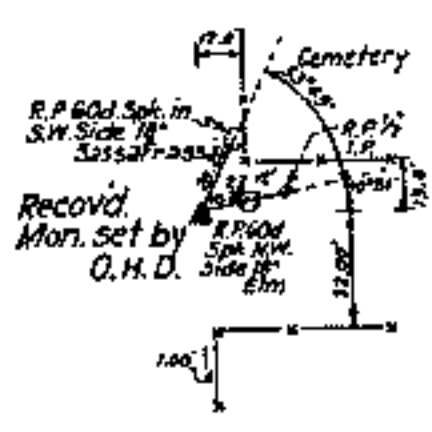
N.E. CORNER



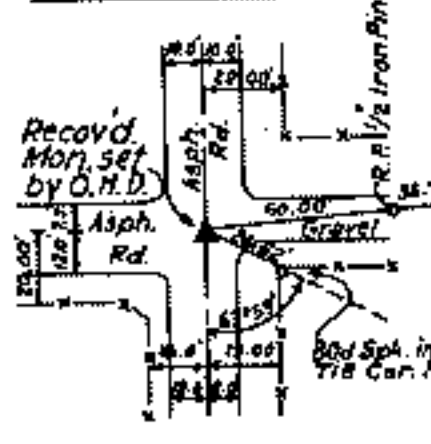
WEST 1/4 COR.



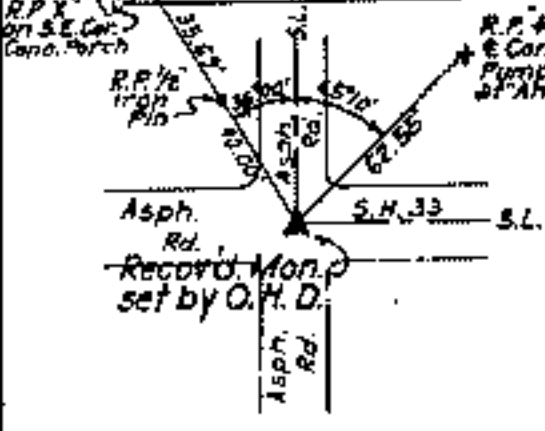
CEN. 1/4 COR.



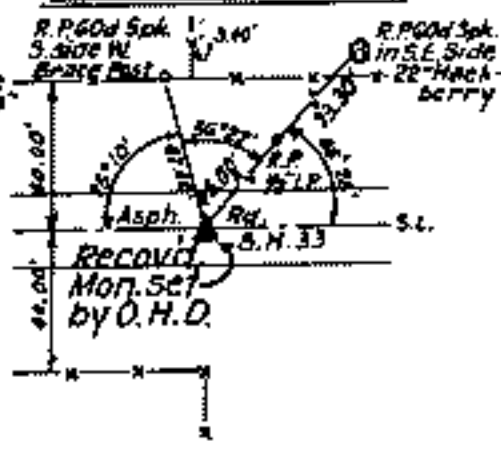
EAST 1/4 COR.



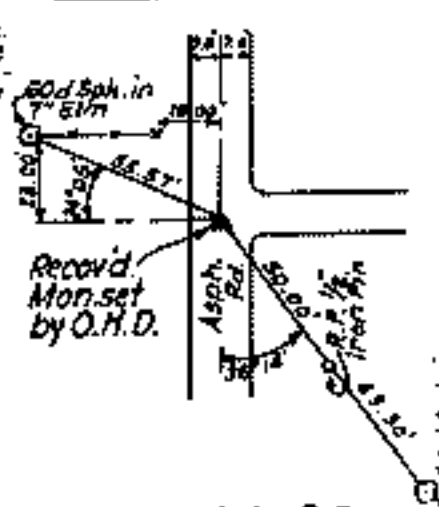
S.W. CORNER



SOUTH 1/4 COR.



S.E. CORNER



Sheet 2 of 2

Scale: 1" = 50'
 Date: Feb. - July, 1972
 Field Book No. 5-1

Certificate of Survey

I hereby certify that the above plat is a true and correct representation of the survey made in Section 19, T. 20 N., R. 20 E., Mayes County, Oklahoma.

Charles J. Fackler
 Charles J. Fackler
 Registered Land Surveyor No. 38



Legend

- △ Monument
- Orig. Corner
- Iron Pin
- ▲ Mon. by O.H.D.