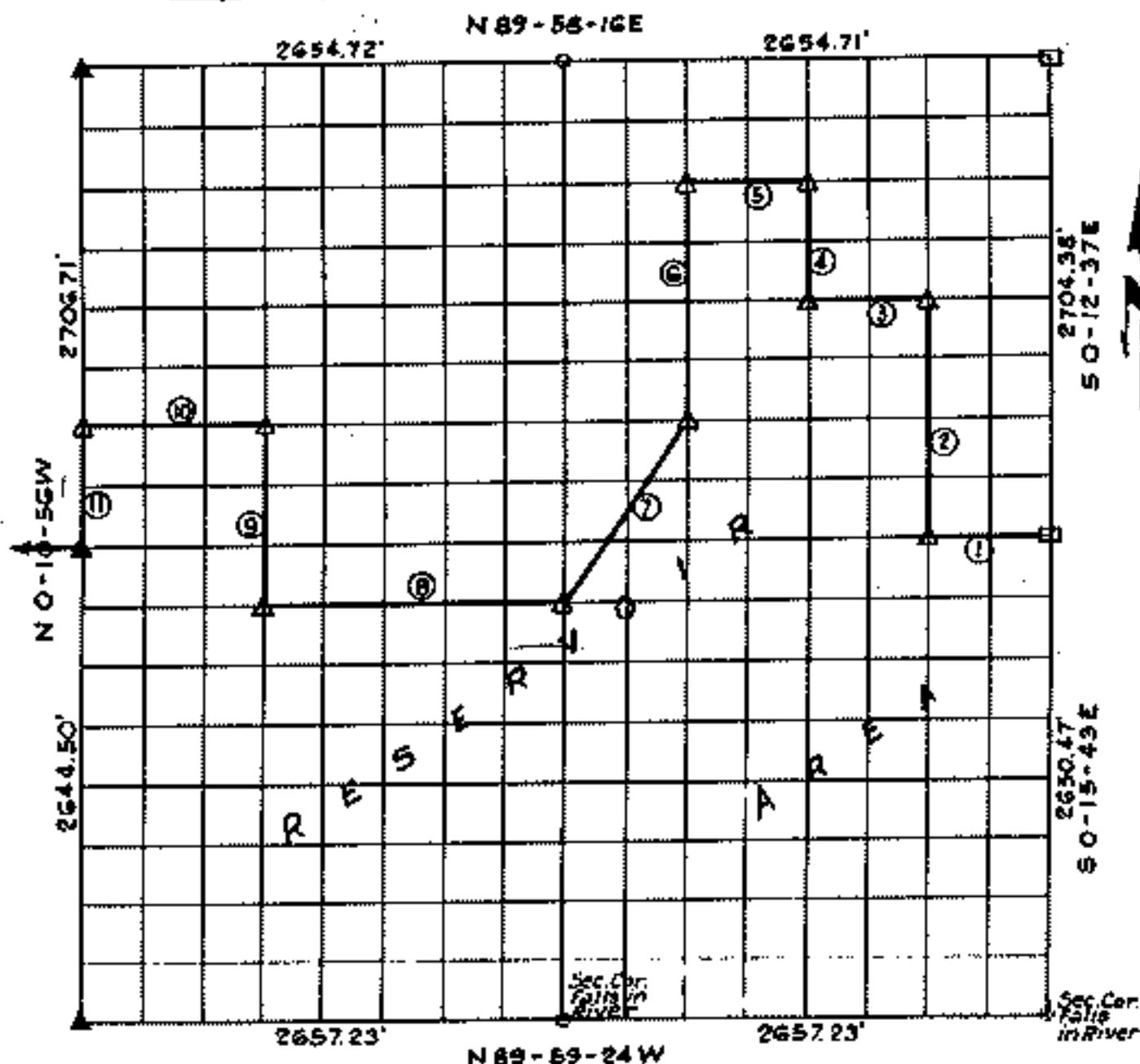


# FOR "BIBSON LAKE AREA" OKLAHOMA

Performed under Contract Number DACW56-76-C-0113

SEC. 5, T. 20N., R. 20E., COUNTY MAYES



Course No.	Distance	Bearing	Course No.	Distance	Bearing
1	663.70'	S89°56'45"W			
2	1320.12'	N0°12'35"W			
3	666.94'	S89°54'47"W			
4	658.54'	N0°12'34"W			
5	660.00'	S89°53'48"W			
6	1319.68'	S0°12'33"E			
7	1190.91'	S33°39'36"W			
8	1660.08'	S89°57'14"W			
9	989.91'	N0°11'32"W			
10	995.88'	S89°55'46"W			
11	658.73'	N0°10'56"E			

### Certificate of Survey

I hereby certify that the above is a true and correct representation of the survey made in Section 5, T. 20N., R. 20E., Mayes County, Oklahoma.

*Charles J. Finklea*  
 Charles J. Finklea  
 Registered Professional Surveyor No. 35

Sheet 1 of 2

#### Legend

- △ Monument
- Orig. Corner
- Iron Pin
- ▲ N. by O.H.D.

Scale: 1:10,000  
 Date: Feb. - July, 1976  
 Field Book No. 5-1908

