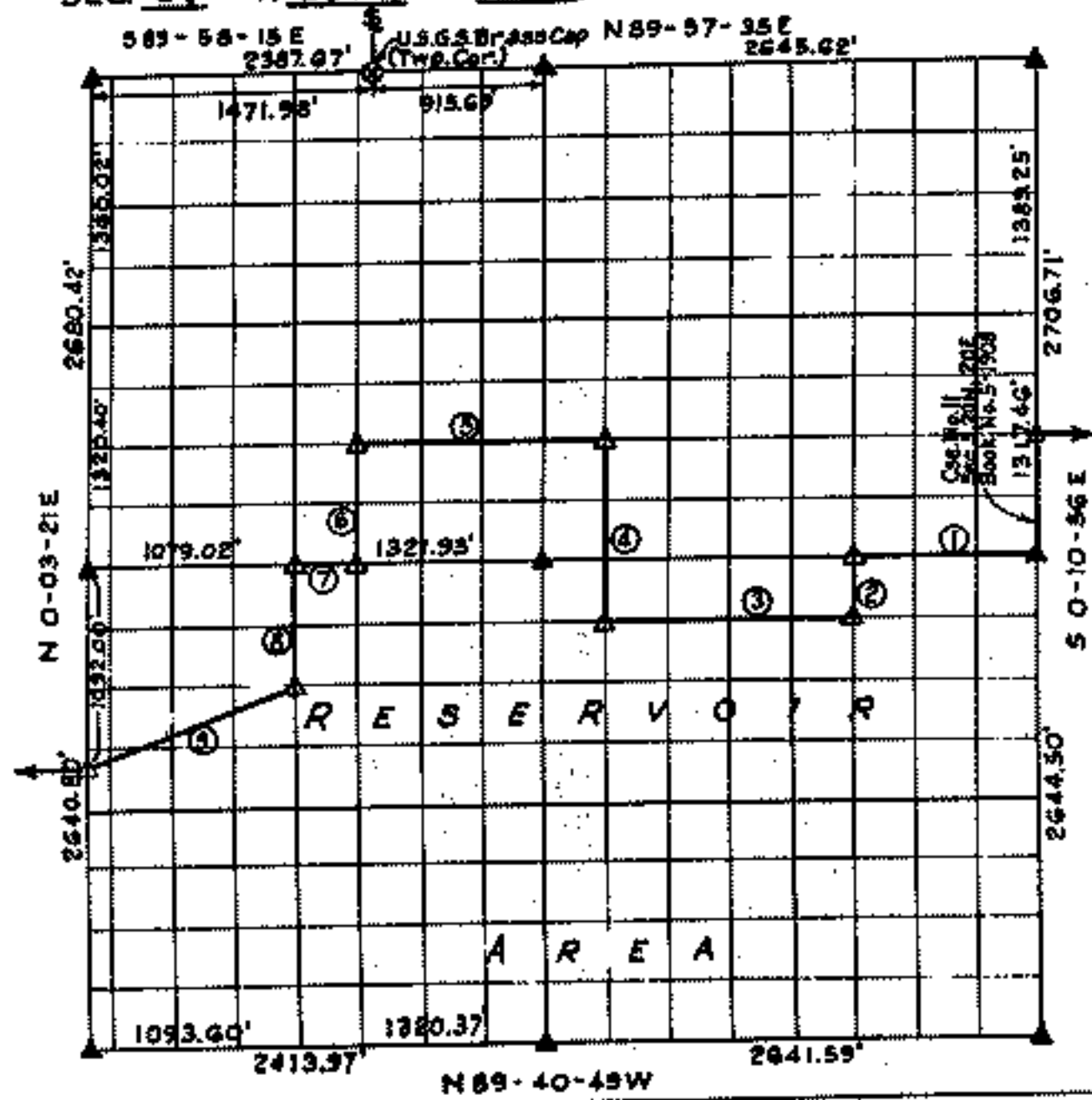


OKLAHOMA

Performed under Contract Number W56-76-C-0113
 SEC. 6, T. 20 N., R. 20 E., COUNTY MAYES



Course No.	Distance	Bearing	Course No.	Distance	Bearing
1	991.35'	N 89° 43' 17" W			
2	330.45'	S 0° 11' 55" E			
3	1321.68'	N 89° 42' 55" W			
4	989.30'	N 0° 13' 15" W			
5	1322.14'	N 89° 42' 31" W			
6	659.30'	S 0° 16' 29" E			
7	330.48'	N 89° 43' 17" W			
8	662.14'	S 0° 15' 38" E			
9	1163.26'	S 68° 30' 40" W			

Certificate of Survey

I hereby certify that the above plat is a true and correct representation of the survey made in Section 6, T. 20 N., R. 20 E., Mayes County, Oklahoma.

Charles J. Finklea
 Charles J. Finklea
 Registered Surveyor No. 35

Scale: 1:10,000
 Date: Feb-July, 1976
 Plat Book No. 5-1909

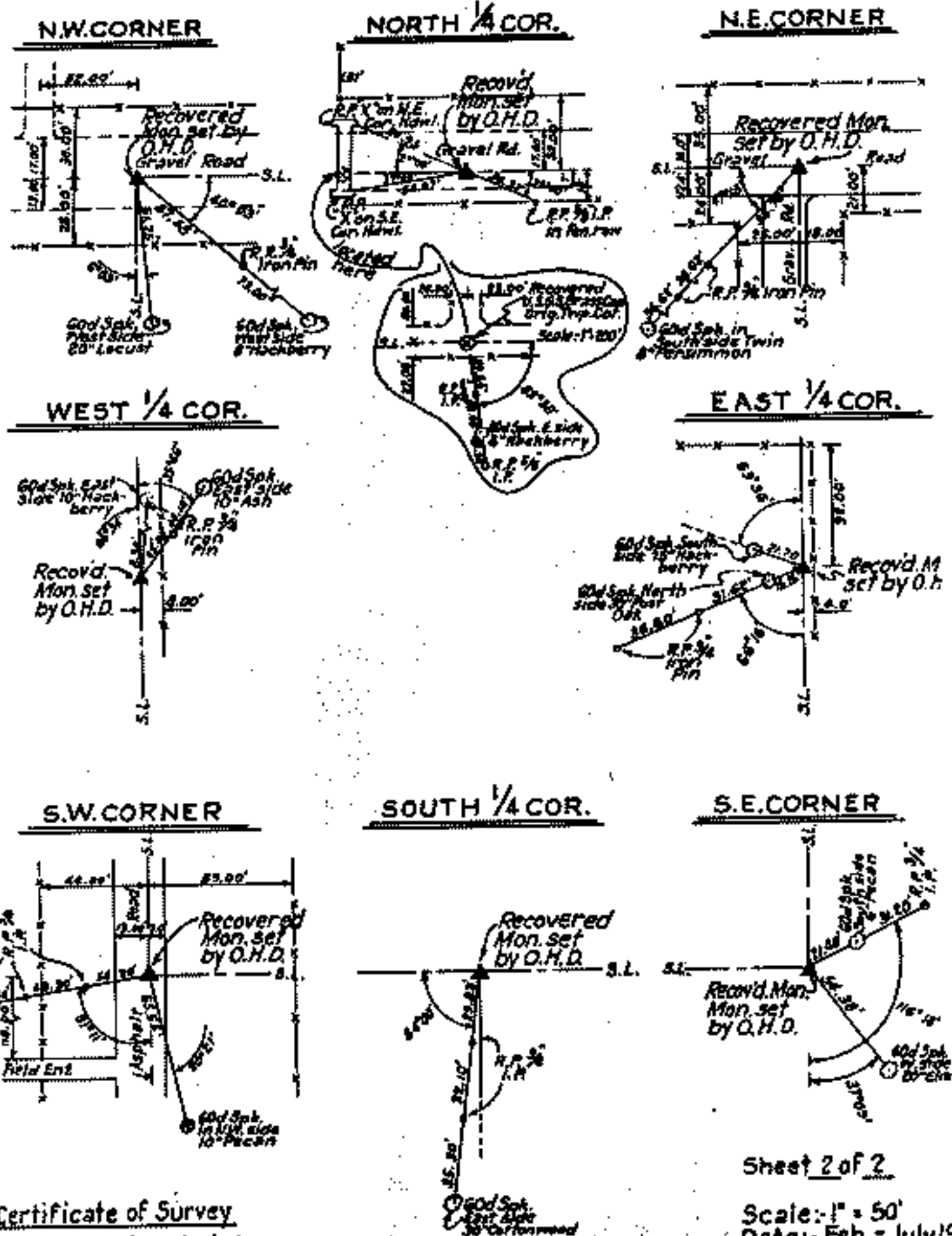
Sheet 1 of 2

Legend

- △ Monument
- Orig. Corner
- Iron Pin
- ▲ Mon. by O.H.

SECTION AND QUARTER SECTION CORNER
REFERENCES F 1

SEC. 6, T. 20N., R. 20E., COUNTY MAYES



Sheet 2 of 2

Scale: 1" = 50'
Date: Feb. - July, 1919
Field Book No. 5-19

Certificate of Survey

I hereby certify that the above plat is a true and correct representation of the survey made in Section 6, T. 20 N., R. 20 E., Mayes County, Oklahoma.

Charles J. Fiskies

Charles J. Fiskies
Registered Surveyor No. 35



Legend

- △ Monument
- Orig. Corner
- Iron Pin
- ▲ on. by O.H.D.