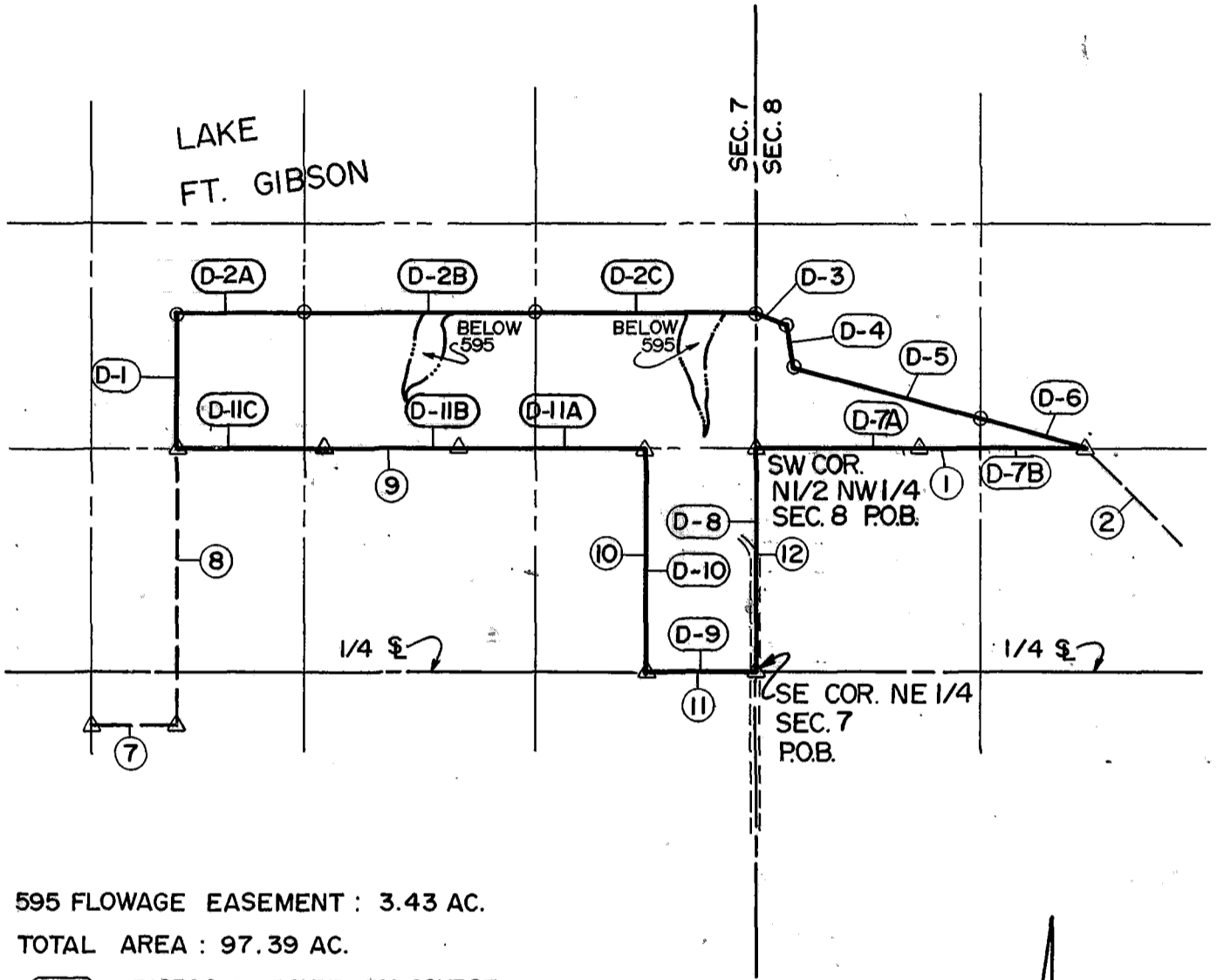


DISPOSAL TRACT SURVEY PLAT
FT. GIBSON DAM & RESERVOIR
LAKE FT. GIBSON, OKLA.

SEC. 7 & 8 , T 20 N , R 20 E , COUNTY MAYES

PARCEL NO. 38 Performed Under Contract No. DACA56-88-D-0050



595 FLOWAGE EASEMENT : 3.43 AC.

TOTAL AREA : 97.39 AC.

- (D-4) : DISPOSAL BOUNDARY COURSE
- (9) : ORIGINAL BOUNDARY COURSE



SCALE 1"=1000'

Course No.	Distance	Bearing	Course No.	Distance	Bearing
D-1	800.12	N 00°11'23"E	*D-2A	825.05	S 89°47'33"E
D-2	*		*D-2B	1320.85	S 89°48'13"E
D-3	195.47	S 70°24'48"E	*D-2C	1321.53	S 89°48'52"E
D-4	263.82	S 08°58'51"E	*D-11A	1127.47	N 89°44'52"W
D-5	1140.93	S 74°56'08"E	*D-11B	806.16	N 89°45'08"W
D-6	688.21	S 74°29'12"E	*D-11C	872.36	N 89°45'35"W
D-7	*		*D-7A	984.43	N 89°52'42"W
D-8	1320.63	S 00°14'43"W	*D-7B	1009.20	N 89°52'42"W
D-9	660.11	N 89°49'03"W			
D-10	1320.58	N 00°13'17"E			
D-11	*				

Field Book No. 5-1869 Date DEC. 1988

CERTIFICATE OF SURVEY ENTZ ENGINEERING & ASSOCIATES INC. AND
 I Hereby Certify That The HUFFMAN SURVEYING CO., INC.
 Above Plat is a True and Correct
 Representation of the Survey
 Made in Sec 7&8 T20N, R20E
 A Joint Venture
 for

U.S. ARMY ENGINEER DISTRICT, TULSA
 CORPS OF ENGINEERS

- LEGEND —
- △ MONUMENT
 - ORIGINAL CORNER
 - IRON PIN W/ CAP

Ron Huffman
 Ron Huffman L.S. 1020