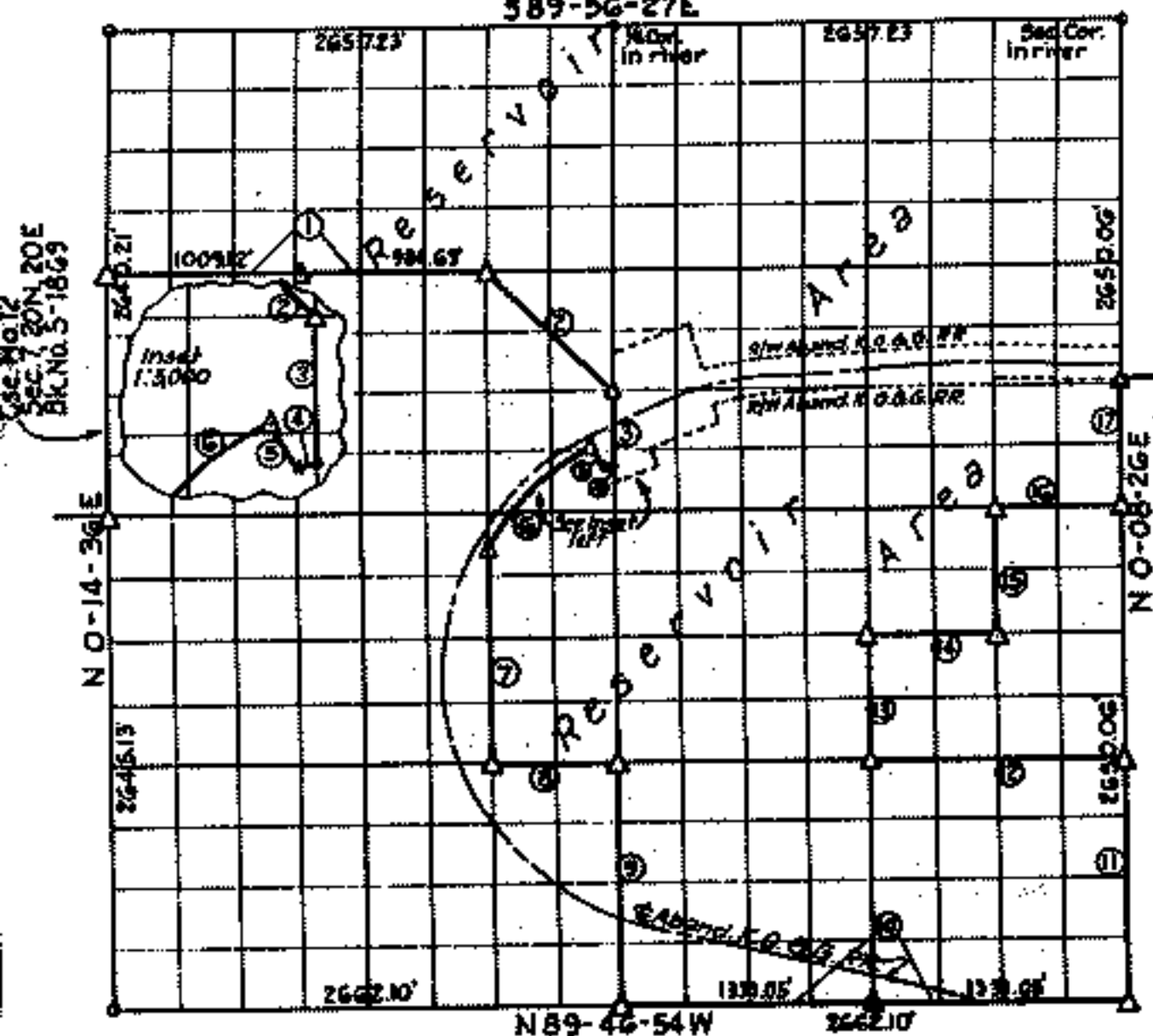


SEC. 8 T. 20 N. R. 20 E. COUNTY MAYES

389-56-27E

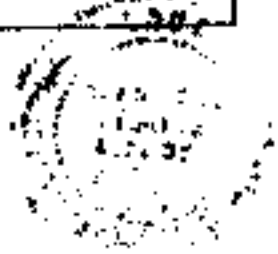


Course No.	Distance	Bearing	Course No.	Distance	Bearing
1	1993.75	S 75° 53' 16" E	11	1325.63	N 0° 06' 26" E
2	93.79	S 14° 59' 29" E	12	1390.22	N 89° 52' 30" E
3	1001.00	S 0° 11' 11" E	13	667.21	S 0° 09' 58" E
4	1001.00	S 0° 11' 11" E	14	665.05	S 89° 49' 13" E
5	1001.00	S 62° 12' 30" E			
6	1001.00	N 20° 12' 03" W			
7	778.12	S 15° 26' 14" W			
8	1120.75	S 0° 12' 17" W			
9	905.20	S 89° 46' 30" E			
10	1323.50	S 0° 11' 11" W			
	2662.10	S 89° 46' 54" W			

Book 12, 5-1670

Date: October, 1973

I, Charles J. Nickles, hereby certify that the above plat is a true and correct representation of the survey made in Section 8, T20N, R20E.



- LEGEND
- △ Monument
 - Original Stone
 - Iron Pin
 - ▲ Mon. by O.H.D.

Charles J. Nickles
Registered Land Surveyor

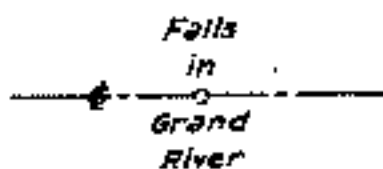
SEC. 8, T. 20 N. R. 20 E.

SECTION AND QUARTER SECTION CORNER
REFERENCES FOR
SEC. 8, T20N, R20E, MAYES COUNTY

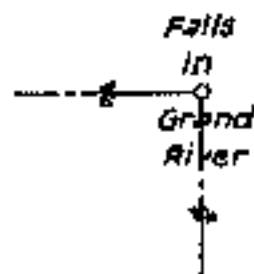
N.W. SECTION CORNER



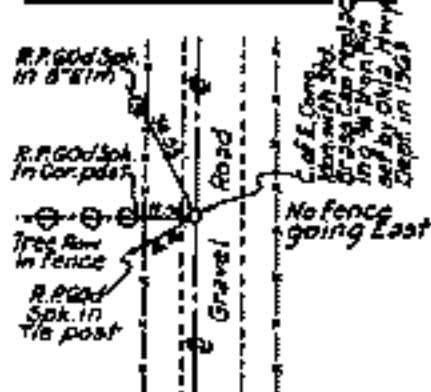
NORTH 1/4 CORNER



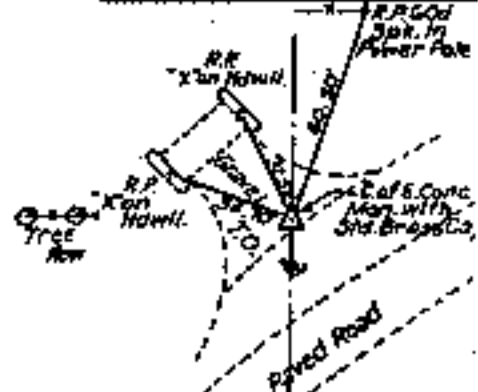
N.E. SECTION CORNER



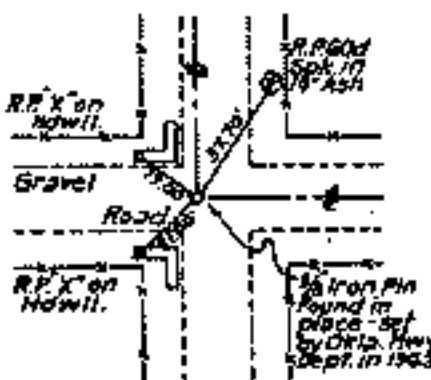
WEST 1/4 CORNER



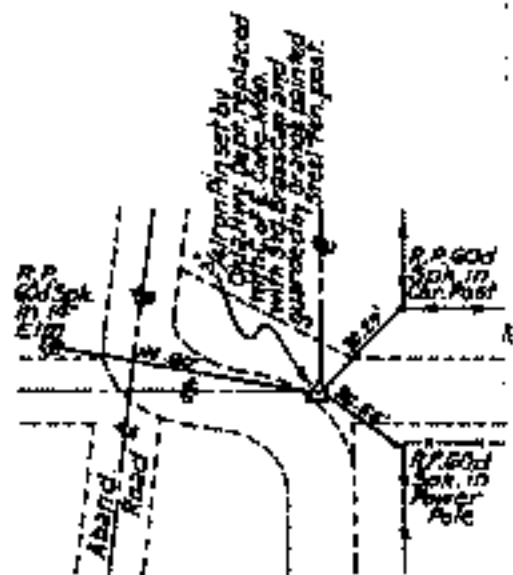
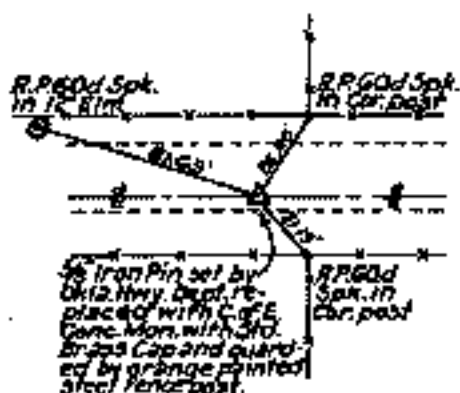
EAST 1/4 CORNER



SW. SECTION CORNER



SOUTH 1/4 CORNER



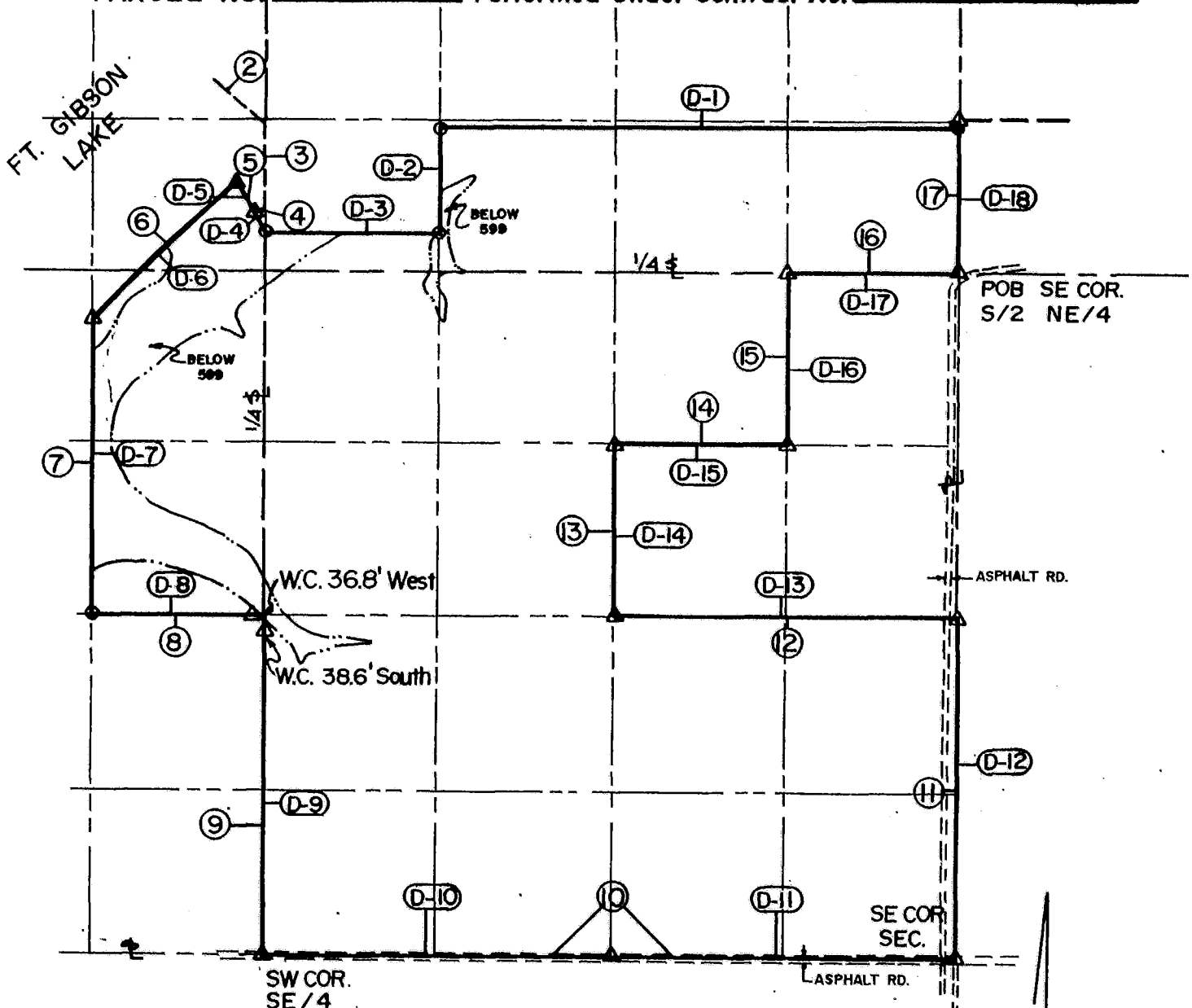
S.E. SECTION CORNER

Scale: 1" = 50'
Date: June - October 1973
Field Book No. 5-1870

**DISPOSAL TRACT SURVEY PLAT
FT. GIBSON DAM & RESERVOIR
LAKE FT. GIBSON, OKLA.**

SEC. 8 , T 20 N , R 20 E , COUNTY MAYES

PARCEL NO. 39 Performed Under Contract No. DACA56-88-D-0050



- (D-1) DISPOSAL BNDRY. CRS.
- (1) ORIGINAL BNDRY. CRS.

TOTAL AREA : 182.81 AC.
FLOWAGE ESMNT. : 12.01 AC.

SCALE 1" = 600'

Course No.	Distance	Bearing	Course No.	Distance	Bearing
D-1	1994.40	N 89°50'05" W	D-14	662.21	N 00°09'58" E
D-2	418.09	S 00°10'48" W	D-15	665.90	S 89°52'03" E
D-3	664.88	N 89°50'10" W	D-16	662.36	N 00°09'49" E
D-4	87.58	N 27°52'59" W	D-17	665.12	S 89°50'32" E
D-5	149.71	N 28°02'19" W	D-18	582.04	N 00°08'26" E
D-6	L: 788.81 R: 1382.40				
D-7	1147.99	S 00°12'21" W			
D-8	664.48	S 89°45'24" E			
D-9	1324.41	S 00°14'35" W			
D-10	1332.96	S 89°41'55" E			
D-11	1331.05	S 89°46'54" E			
D-12	1325.03	N 00°08'26" E			
D-13	1330.42	N 89°48'30" W			

Field Book No. 5-1870 Date JAN, 1989

CERTIFICATE OF SURVEY ENTZ ENGINEERING & ASSOCIATES INC. AND HUFFMAN SURVEYING CO., INC.

I Herby Certify That The Above Plat is a True and Correct Representation of the Survey Made in Sec. 8 T 20 N, R 20 E.

A Joint Venture for

U.S. ARMY ENGINEER DISTRICT, TULSA
CORPS OF ENGINEERS

— LEGEND —

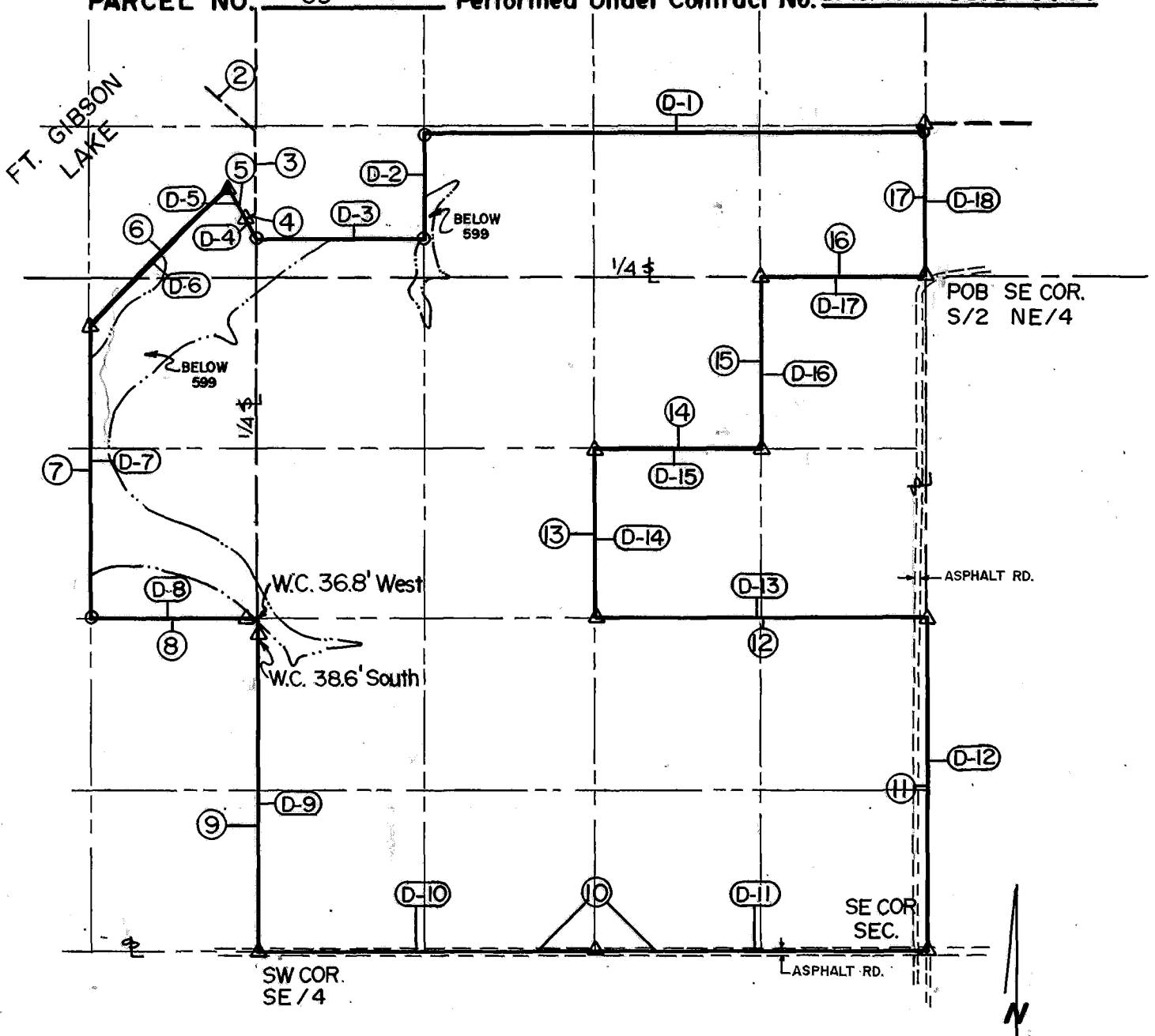
- △ MONUMENT
- ORIGINAL CORNER
- IRON PIN/CAP

Don Huffman
Don Huffman L.S. 1080

**DISPOSAL TRACT SURVEY PLAT
FT. GIBSON DAM & RESERVOIR
LAKE FT. GIBSON, OKLA.**

SEC. 8, T 20 N, R 20 E, COUNTY MAYES

PARCEL NO. 39 Performed Under Contract No. DACA56-88-D-0050



SCALE 1"=600'

Course No.	Distance	Bearing	Course No.	Distance	Bearing
D-1	1994.40	N 89°50'05" W	D-14	662.21	N 00°09'58" E
D-2	418.09	S 00°10'48" W	D-15	665.90	S 89°52'03" E
D-3	664.88	N 89°50'10" W	D-16	662.36	N 00°09'49" E
D-4	87.58	N 27°52'59" W	D-17	665.12	S 89°50'32" E
D-5	149.71	N 28°02'19" W	D-18	582.04	N 00°08'26" E
D-6	L: 788.81 R: 1382.40				
D-7	1147.99	S 00°12'21" W			
D-8	664.48	S 89°45'24" E			
D-9	1324.41	S 00°14'35" W			
D-10	1332.96	S 89°41'55" E			
D-11	1331.05	S 89°46'54" E			
D-12	1325.03	N 00°08'26" E			
D-13	1330.42	N 89°48'30" W			

Field Book No. 5-1870 Date JAN., 1989

CERTIFICATE OF SURVEY ENTZ ENGINEERING & ASSOCIATES INC. AND
I Hereby Certify That The HUFFMAN SURVEYING CO., INC.
Above Plat is a True and Correct A Joint Venture
Representation of the Survey for
Made in Sec. 8, T 20 N, R 20 E. U.S. ARMY ENGINEER DISTRICT, TULSA
CORPS OF ENGINEERS

Ron Huffman
Ron Huffman L.S. 1020

— LEGEND —

Δ MONUMENT
□ ORIGINAL CORNER
○ IRON PIN/CAP

SHEET 1 OF 2