

FORT GIBSON LAKE, AREA "A" OKLAHOMA

Performed under Contract Number DACW56-77-C-0058

SEC. 27, T. 21 N., R. 19 E., COUNTY MAYES

S 89 - 52 - 39 E

2647.28'

2647.27'

2647.64'

2636.54'

N 0 - 07 - 35 W

S 0 - 04 - 37 E

2647.05'

2636.54'

2644.98'
S 89 - 55 - 13 W2644.98'
S 89 - 50 - 42 W

Course No.	Distance	Bearing	Course No.	Distance	Bearing
1	496.43'	N 0 - 07 - 35 W			
2	330.65'	N 89 - 56 - 09 E			
3	827.24'	N 0 - 07 - 26 W			
4	330.69'	S 89 - 57 - 41 W			

Certificate of Survey

I hereby certify that the above plat is a true and correct representation of the survey made in Section 27, T. 21 N., R. 19 E., Mayes County, Oklahoma.

Sheet 1 of 2

Legend

- △ Monument
- Orig. Corner
- Iron Pin
- Mon. by O.H.

Scale: 1" = 100.00'

Date: May 19, 77

Charles J. Finklea

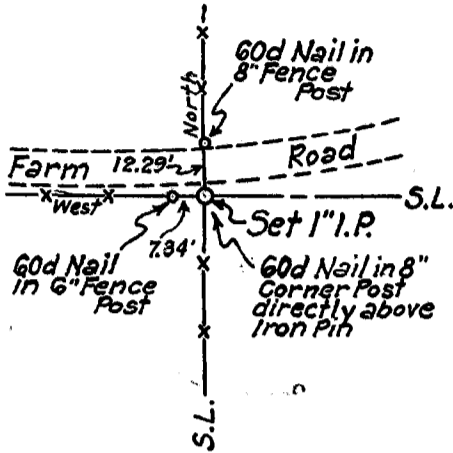
Filed _____ day of _____ 1977 Mayes County, Okla.
 Part of Book 537, Page _____ Sammy Howard, Surveyor
 By _____

FORT GIBSON LAKE, AREA "A" OKLAHOMA

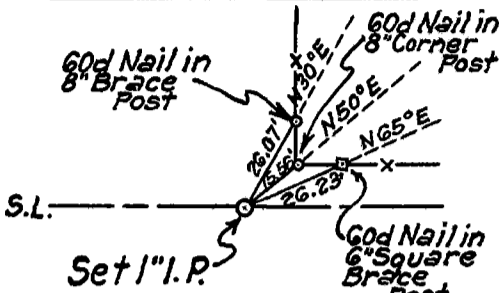
SECTION AND QUARTER SECTION CORNER
REFERENCES FOR

SECTION 27, T. 21N., R. 19E., COUNTY MAYES

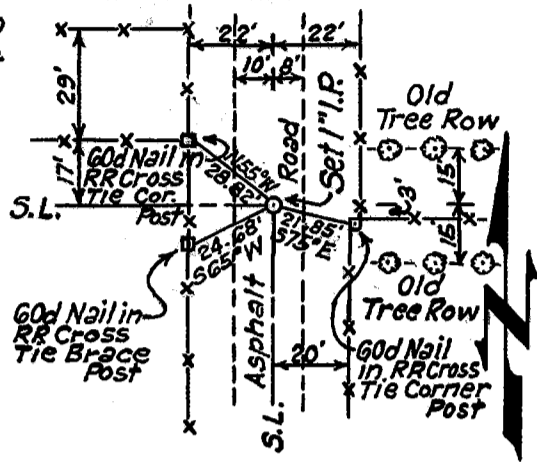
N.W. CORNER



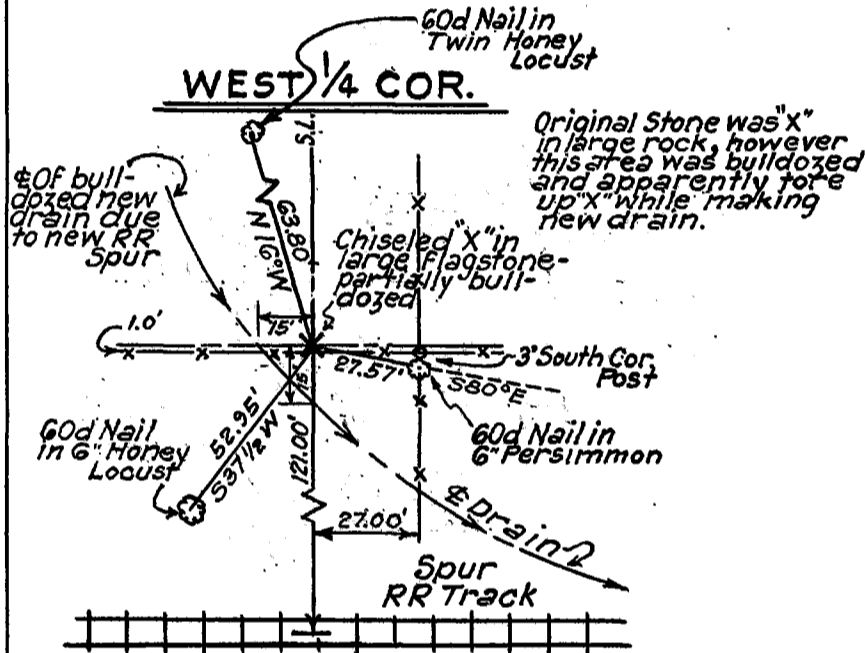
NORTH 1/4 COR.



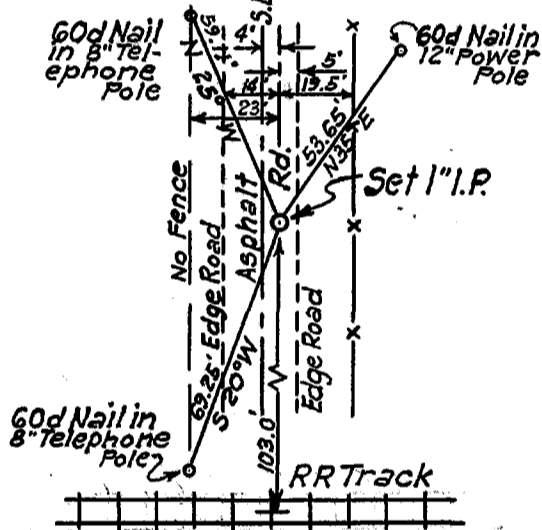
N.E. CORNER



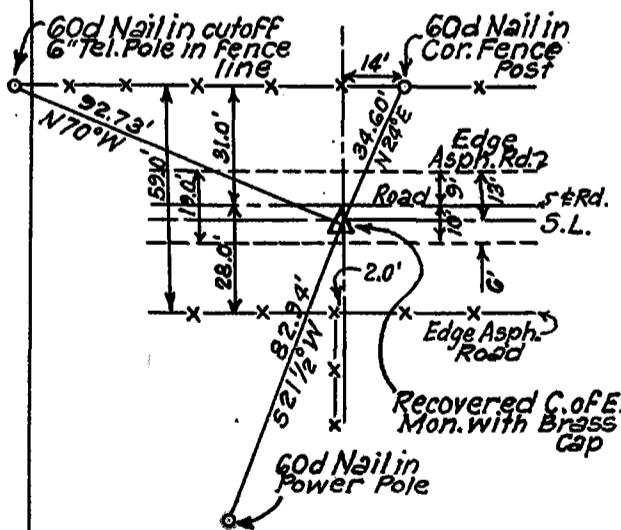
WEST 1/4 COR.



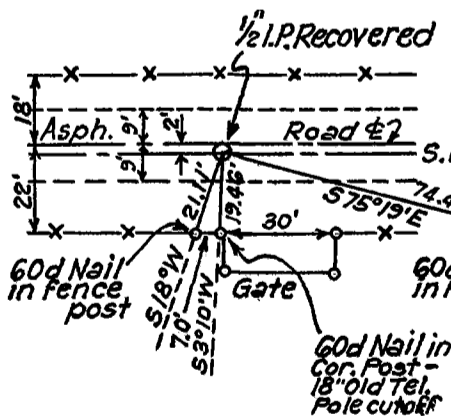
EAST 1/4 COR.



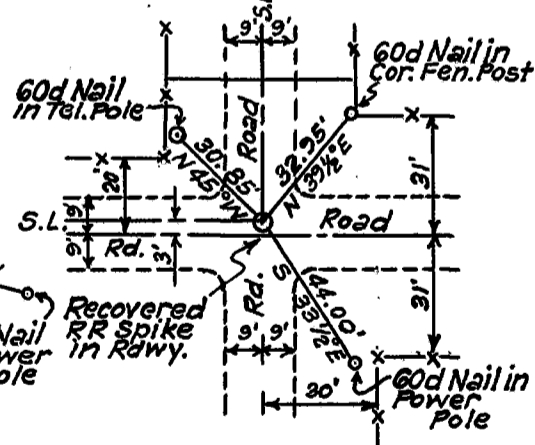
S.W. CORNER



SOUTH 1/4 COR.



S.E. CORNER



Certificate of Survey

I hereby certify that the above plat is a true and correct representation of the survey made in Section 27, T. 21N., R. 19E., Mayes County, Oklahoma

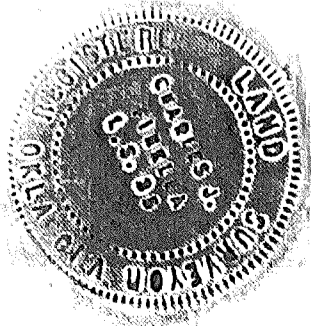
Charles J. Finklea
Charles J. Finklea
Registered Land Surveyor No. 35

Sheet 2 of 2

Scale: - 1" = 50'

Date: - May 1977

Field Book No. 5-1937



Legend

- △ Monument
- Orig. Corner
- Iron Pin
- ▲ Mon. by O.H.D.