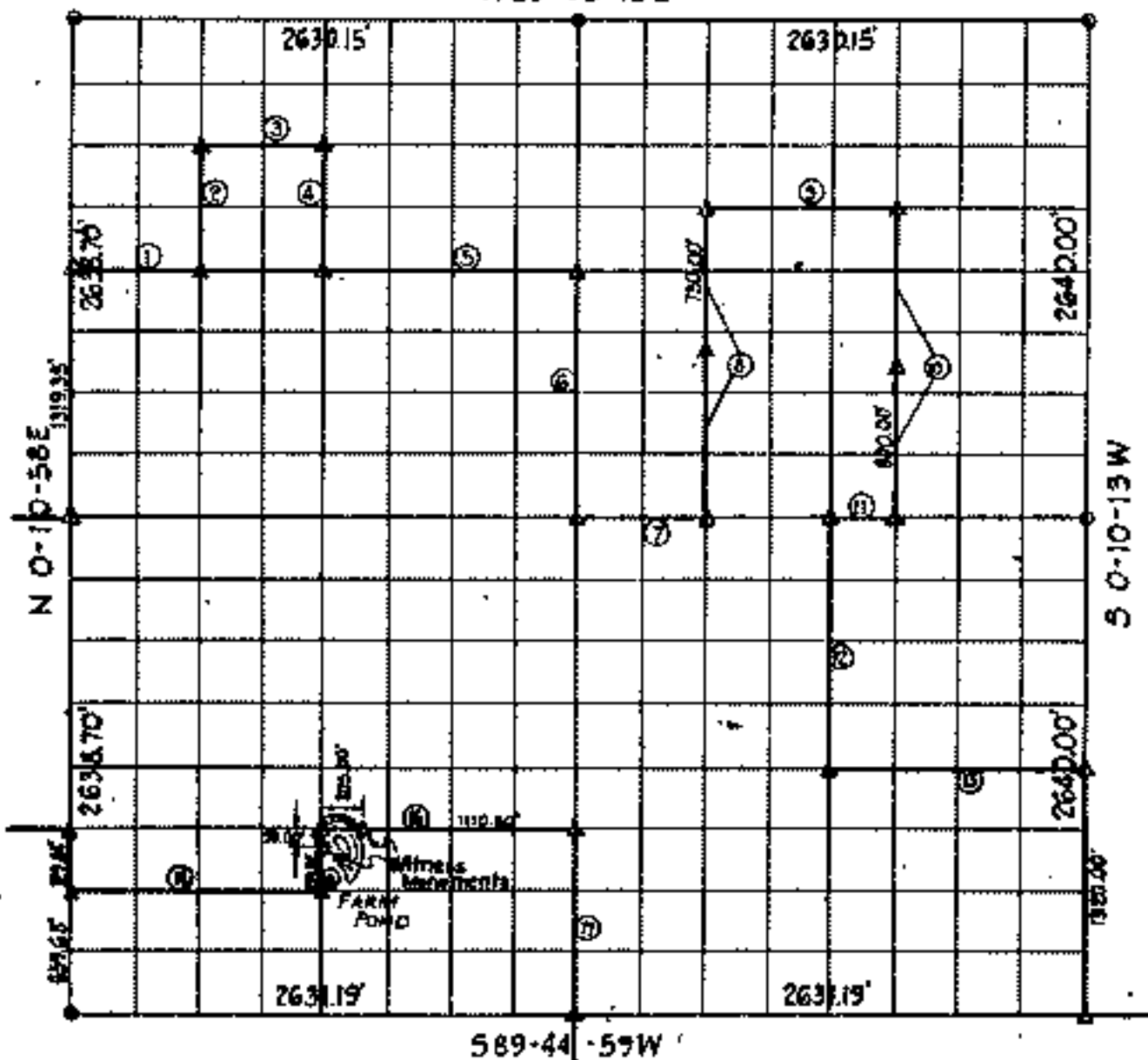


N 89-43-18 E



Course Number	Distance	Bearing	Course Number	Distance	Bearing
1	657.60	N 89° 43' 43" E	13	1315.47	N 89° 44' 41" E
2	659.72	N 89° 40' 52" E	14	1315.51	N 89° 44' 41" E
3	657.57	N 89° 43' 32" E	15	329.88	N 89° 40' 52" E
4	497.76	S 0° 10' 47" W	16	1315.50	N 89° 44' 41" E
5	1315.21	N 89° 43' 43" E	17	909.76	S 0° 10' 47" W
6	1319.68	N 89° 40' 36" E			
7	657.67	N 89° 44' 00" E			
8	1449.69	N 89° 40' 30" E			
9	906.38	N 89° 43' 37" E			
10	1449.85	S 0° 10' 21" W			
11	328.33	N 89° 44' 08" W			
12	1320.26	N 0° 10' 24" W			

Book No. 5-3037 Date: November, 1971

I, Charles J. Finkler, hereby certify that the above plat is a true and correct representation of the survey made in Section 29, T21N, R19E.



Charles J. Finkler
Registered Land Surveyor No. 25

- LEGEND**
- ▲ Monument
 - Original Corner
 - Iron Pin

OR. GIBSON LAKE
 GRAND RIVER, OKLAHOMA
 SECTION AND QUARTER SECTION CORNER
 REFERENCES FOR

SEC. 29, T 21N, R 19E

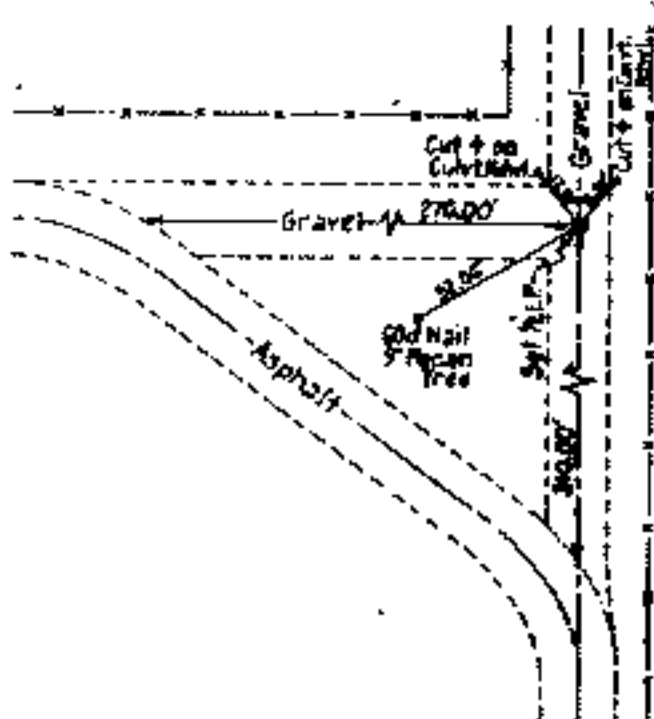
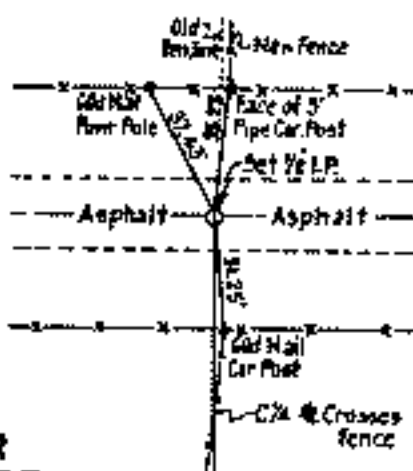
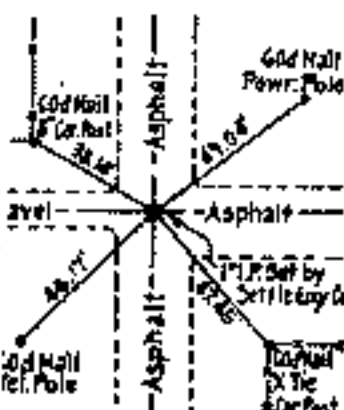
COUNTY MAYES



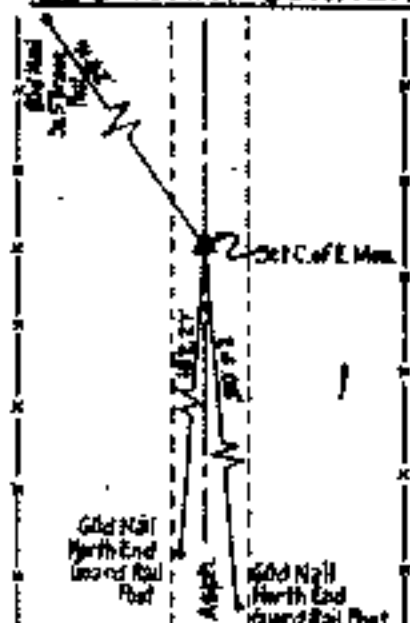
N.W. CORNER

NORTH 1/4 CORNER

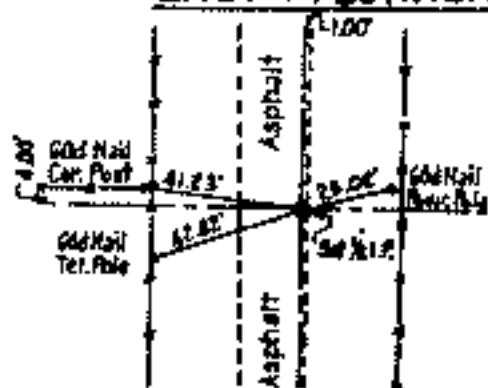
N.E. CORNER



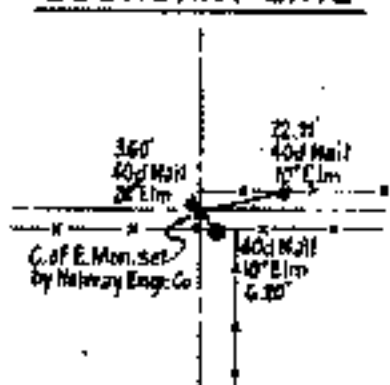
WEST 1/4 CORNER
 BOUNDARY CORNER



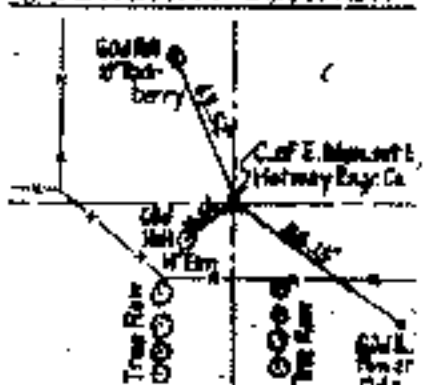
EAST 1/4 CORNER



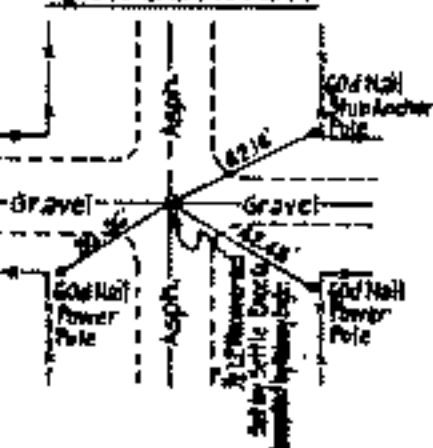
SOUTH 1/4 CORNER
 BOUNDARY LINE



S.E. CORNER
 BOUNDARY CORNER



S.W. CORNER



SAN JUAN ENGINEERING Co.

Scale: 1" = 50'
 Date: Oct. 1971
 Field Book No. 5-1837

LEGEND

- △ Monument
- Original Corner

Sec. 29 T 21N R 19E