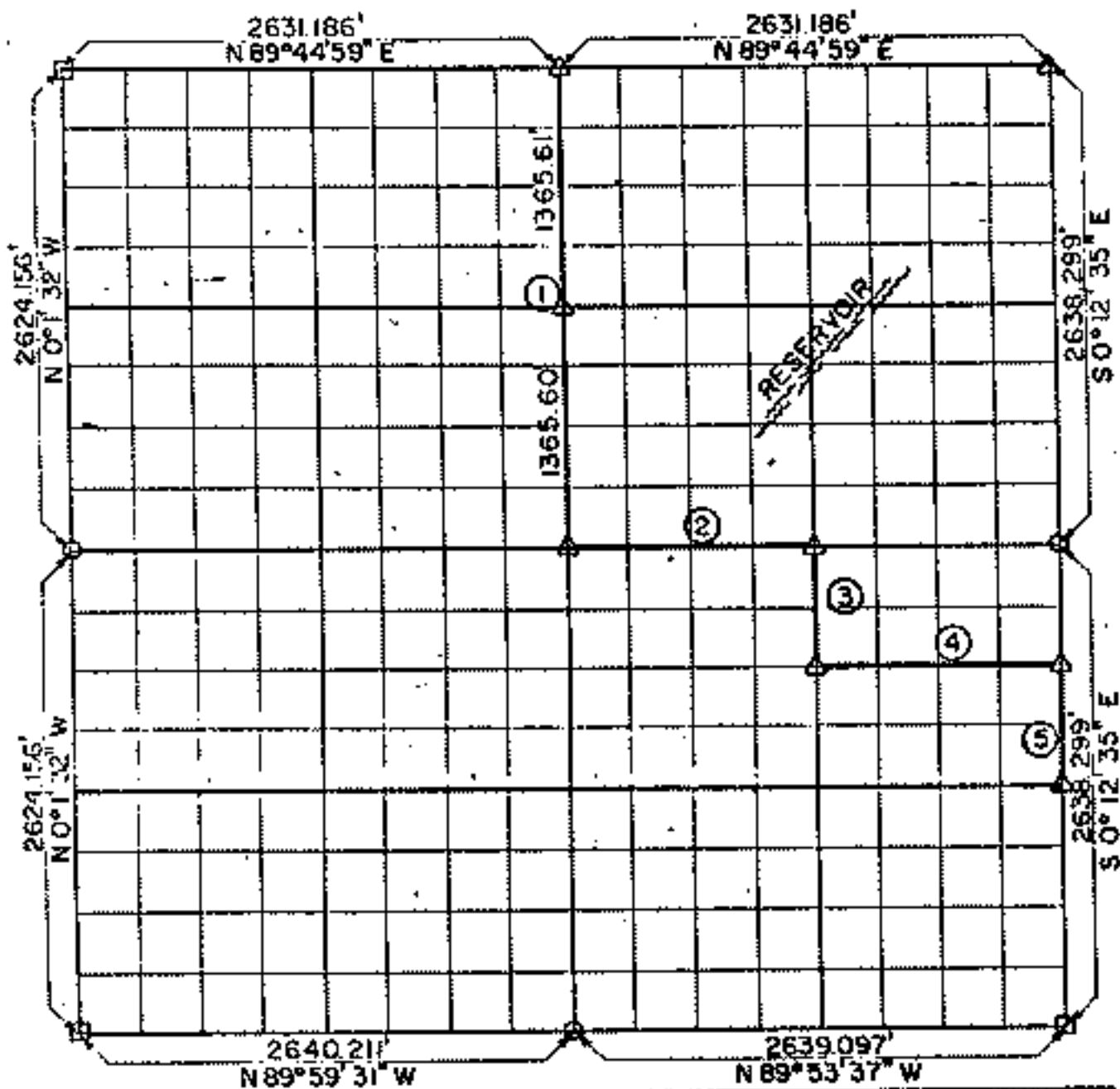


**PARTIAL BOUNDARY SURVEYS
AREA "F" FORT GIBSON LAKE
GRAND RIVER, OKLAHOMA**

Performed Under Contract Number DACW-56-71-C-0109

SEC 32 T 21N R 19E COUNTY MAYES



Course No.	Distance	Bearing	Course No.	Distance	Bearing
1	2631.211'	S 0° 6' 43" E			
2	1317.841'	N 89° 54' 14" E			
3	658.738'	S 0° 9' 39" E			
4	1218.407'	N 89° 56' 24" E			
5	659.574'	S 0° 12' 35" E			

Field Book No. 5-1826 Date April, 1971

CERTIFICATE OF SURVEY
I HEREBY CERTIFY THAT THE ABOVE PLAT IS A TRUE AND CORRECT REPRESENTATION OF THE SURVEY MADE IN SECTION 32, T. 21N., R. 19E., MAYES COUNTY, OKLA.

HOLWAY ENGINEERS INC.
Under the Supervision of
**U.S. ARMY ENGINEER DISTRICT, TULSA
CORPS ENGINEERS**

LEGEND
 MONUMENT
 ORIGINAL CORNER
 IRON PIN