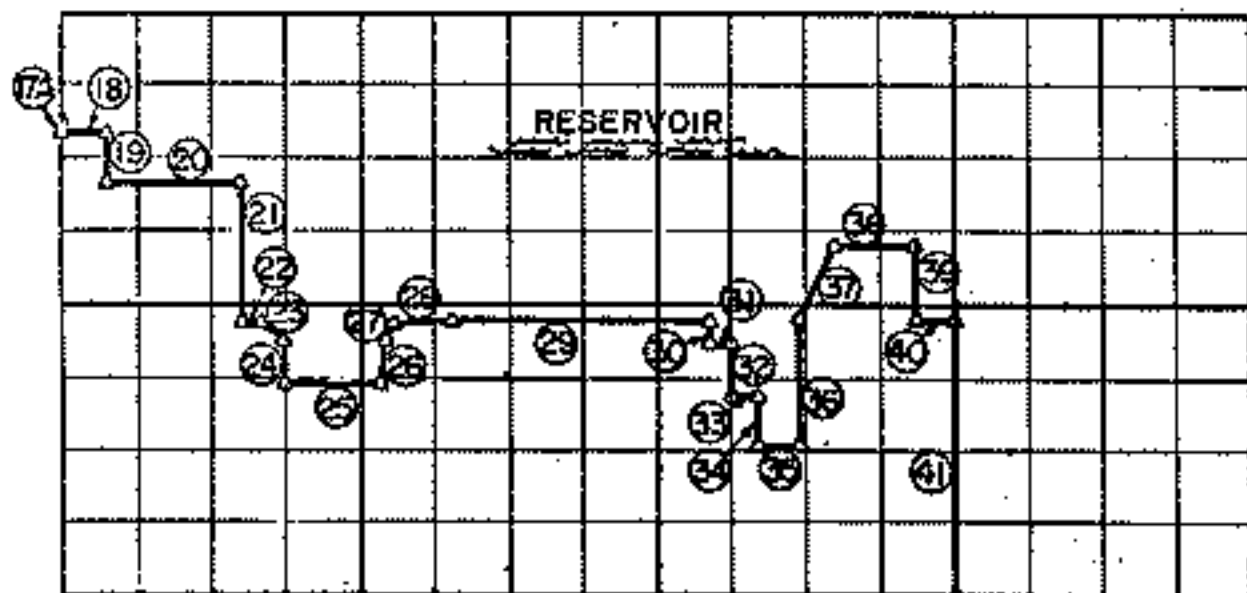


PARTIAL BOUNDARY SURVEYS
 AREA "F" FORT GIBSON LAKE
 GRAND RIVER, OKLAHOMA

Performed Under Contract Number DACW-56-71-C-0109

SEC 33 T 21 N R 19 E COUNTY MAYES

SE 1/4 SW 1/4 & SW 1/4 SE 1/4



Course No.	Distance	Bearing	Course No.	Distance	Bearing
17A	20.00'	S 0° 3' 47" E	30	50.00'	S 0° 3' 47" E
18	100.00'	N 89° 56' 13" E	31	50.00'	N 89° 56' 13" E
19	170.00'	S 0° 3' 47" E	32	170.00'	S 0° 3' 47" E
20	300.00'	N 89° 56' 13" E	33	50.00'	N 89° 56' 13" E
21	290.00'	S 0° 3' 47" E	34	120.00'	S 0° 3' 47" E
22	50.00'	N 89° 56' 13" E	35	100.00'	N 89° 56' 13" E
23	64.03'	S 51° 24' 12" E	36	300.00'	N 0° 3' 47" W
24	100.00'	S 0° 3' 47" E	37	173.33'	N 22° 33' 13" E
25	202.00'	N 89° 56' 13" E	38	183.33'	N 89° 56' 13" E
26	100.84'	N 7° 20' 38" E	39	170.00'	S 0° 3' 47" E
27	35.50'	N 32° 23' 14" E	40	97.90'	N 89° 56' 13" E
28	136.86'	N 85° 43' 40" E	41	630.00'	S 0° 3' 47" E
29	562.46'	N 89° 56' 13" E			

INDICATE OF SURVEY

I CERTIFY THAT THE
 MAP IS A TRUE AND
 REPRESENTATION OF
 THE SURVEY
 MADE IN SECTION
 33, T. 21 N., R. 19 E.,
 MAYES COUNTY,
 OKLAHOMA.

Field Book No. 5-1827 Date April, 1971

HOLWAY ENGINEERS INC.

Under the Supervision of Sgt. 3 T J W RHE
 U.S. ARMY ENGINEER DISTRICT, LSA
 CORP. OF ENGINEERS

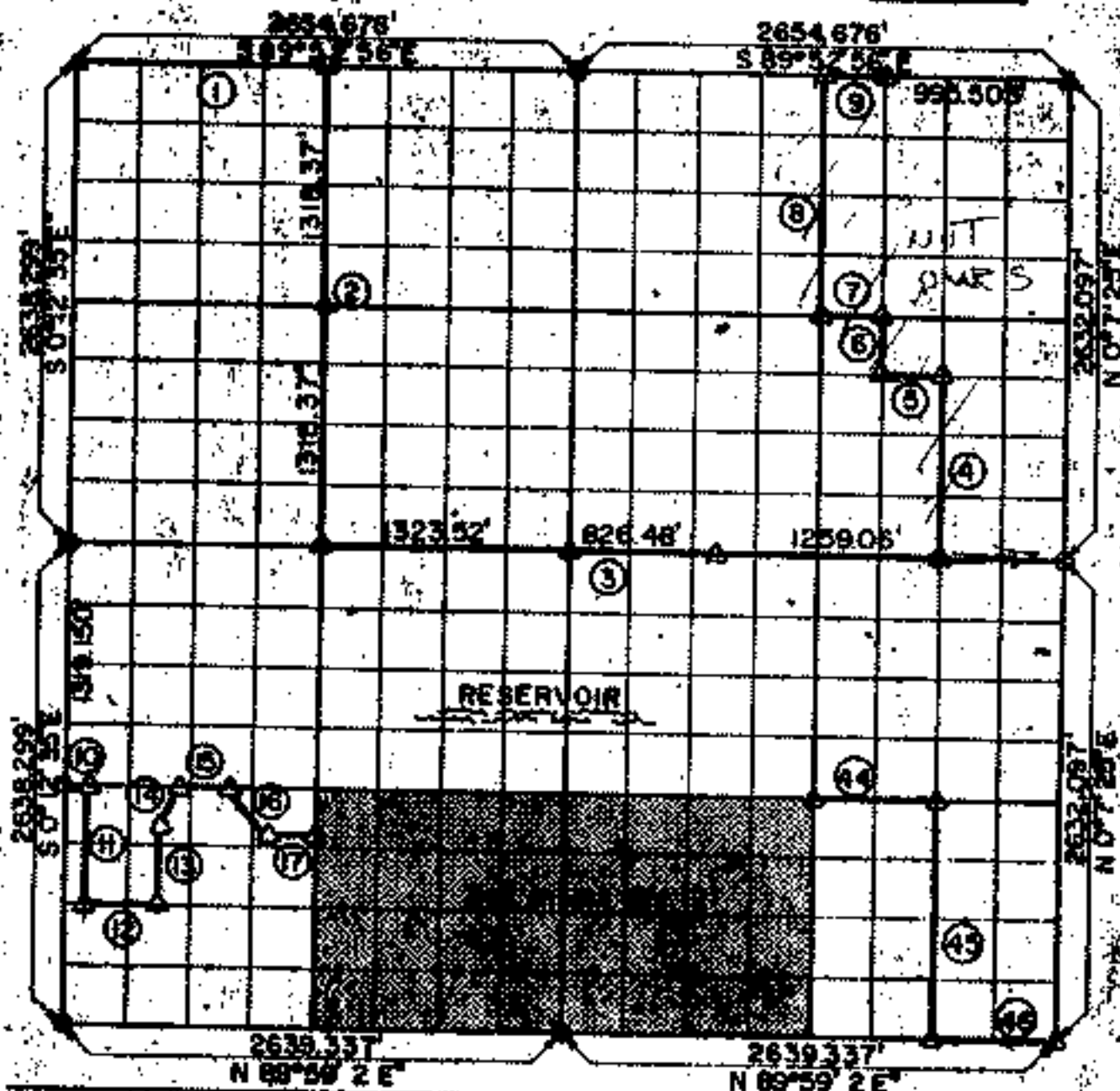
LEGEND

▲ MONUMENT
 □ ORIGINAL CORNER
 ○ IRON PIN

POTENTIAL BOUNDARY SURVEY
 AREA "F" FORT GIBSON LAKE
 GRAND RIVER, OKLAHOMA

Performed Under Contract Number DACW-56-71-C-0109

SEC 33 T 21N R 19E COUNTY MAYES



Course No.	Distance	Bearing	Course No.	Distance	Bearing
1	1327.330'	S 89°52'56" E	14	200.543'	N 34°42'51" E
2	2636.729'	S 0° 7'36" E	15	261.585'	S 89°58'55" E
3	3308.755'	S 89°56'56" E	16	313.802'	S 34° 1'18" E
4	897.323'	N 0° 4'54" E	17	275.000'	S 89°59'19" E
5	821.216'	N 88°55' 26" W	41	29.301'	N 0°56' 14" E
6	529.156'	N 0° 5'39" E	42	660.313'	S 89°56'16" E
7	331.355'	N 89°54'55" W	43	658.009'	N 0° 2'28" E
8	1316.817'	N 0° 2'28" E	44	660.792'	S 89°58'55" E
9	131.875'	S 89°52'56" E	45	1316.431'	S 0° 4'54" W
10	100.000'	S 89°58'55" E	46	659.834'	N 89°59' 2" E
11	660.000'	S 0°12'10" E			
12	295.000'	S 89°59'56" E			
13	495.000'	N 0°10'43" W			

Field Book No. 5-1827 Date April, 1971

CERTIFICATE OF SURVEY

HEREBY CERTIFY THAT THE ABOVE PLAN IS A TRUE AND CORRECT REPRESENTATION OF THE SURVEY MADE IN ACCORDANCE WITH THE PROVISIONS OF THE SURVEYING ACT OF 1916, AS AMENDED.

[Signature]
 SURVEYOR

HOLWAY ENGINEERS INC.

Under the Supervision of

U.S. ARMY ENGINEER DISTRICT, TULSA
 CORPS OF ENGINEERS

corrected sheet

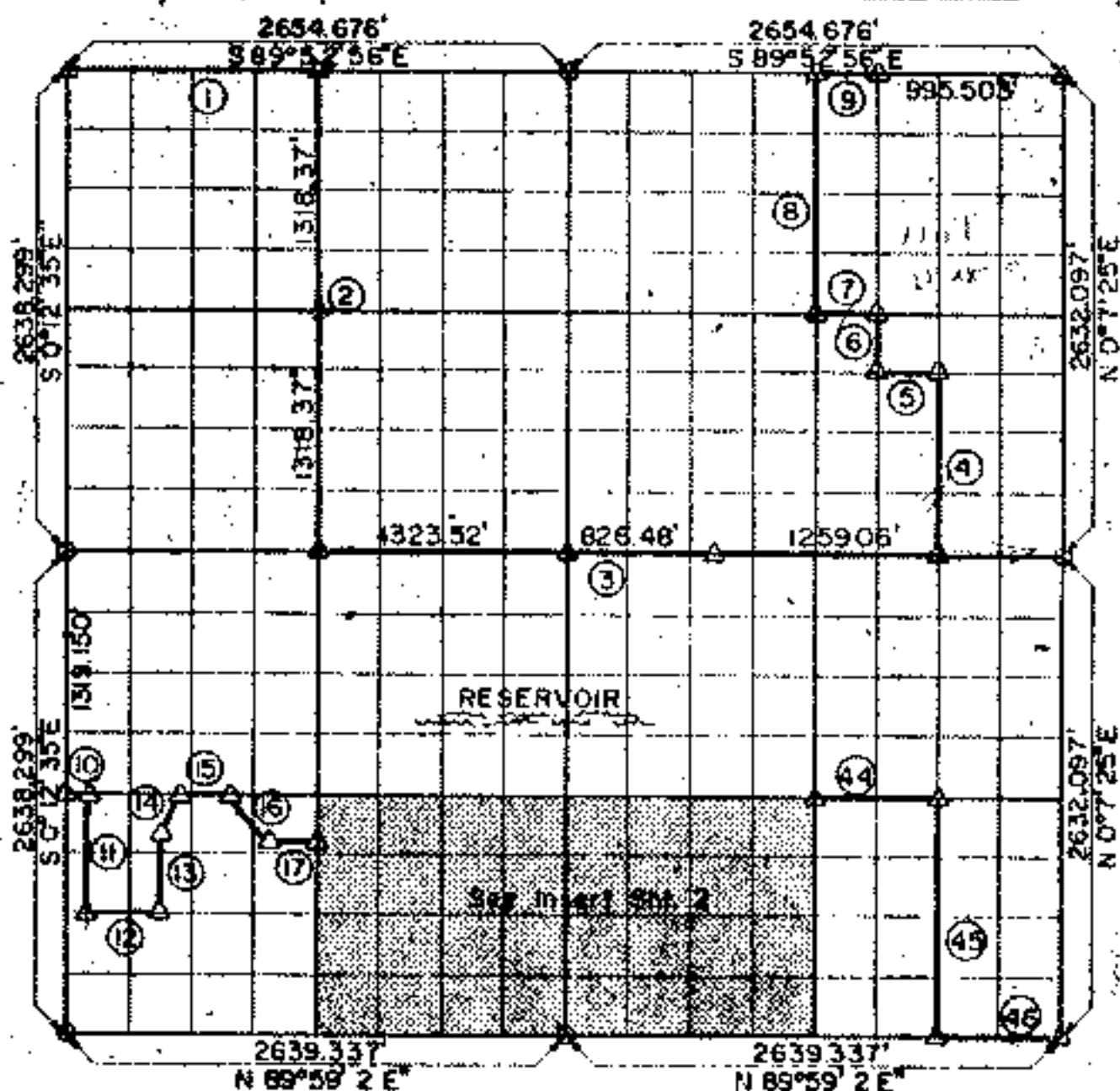
LEGEND

- A original
- B edition
- C correction

PARTIAL BOUNDARY SURVEY
 AREA "F" FORT GIBSON LAKE
 GRAND RIVER, OKLAHOMA

Performed Under Contract Number DACW-56-71-C-0109

SEC 33 T 21N R 19E COUNTY MAYES



Course No.	Distance	Bearing	Course No.	Distance	Bearing
1	1327.338'	S 89°52'56" E	14	200.543'	N 34°42'53" E
2	2636.739'	S 0°07'36" E	15	261.585'	S 89°58'55" E
3	3308.755'	S 89°56'56" E	16	313.807'	S 34°11'18" E
4	987.323'	N 0°04'53" E	17	275.663'	S 89°59'19" E
5	331.234'	N 89°55'36" W	41	29.30'	N 0°56'16" E
6	329.156'	N 0°03'39" E	42	660.313'	S 89°56'16" E
7	331.355'	N 89°54'55" W	43	658.009'	N 0°02'24" E
8	3316.817'	N 0°02'24" E	44	660.793'	S 89°58'55" E
9	331.835'	S 89°52'56" E	45	3316.451'	S 0°04'54" W
10	100.000'	S 89°58'55" E	46	659.810'	N 89°59'2" E
11	660.000'	S 0°12'10" E			
12	395.000'	S 89°59'16" E			
13	495.000'	N 0°10'43" W			

Field Book No. 5-1827 Date April, 1971

HOLWAY ENGINEERS INC.

Under the Supervision of

U.S. ARMY ENGINEER DISTRICT, TULSA
 CORPS OF ENGINEERS

CERTIFICATE OF SURVEY
 I HEREBY CERTIFY THAT THE
 ABOVE PLAN IS A TRUE AND
 CORRECT REPRESENTATION OF
 THE SURVEY MADE IN ACCORDANCE
 WITH THE PROVISIONS OF THE
 SURVEYING ACT OF 1908, AS AMENDED,
 AND THE RULES AND REGULATIONS
 THEREUNDER.

[Signature]
 DISTRICT SURVEYOR NO. 218

LEGEND
 S = SLOPE
 O = OBTUSE ANGLE
 C = CORNER