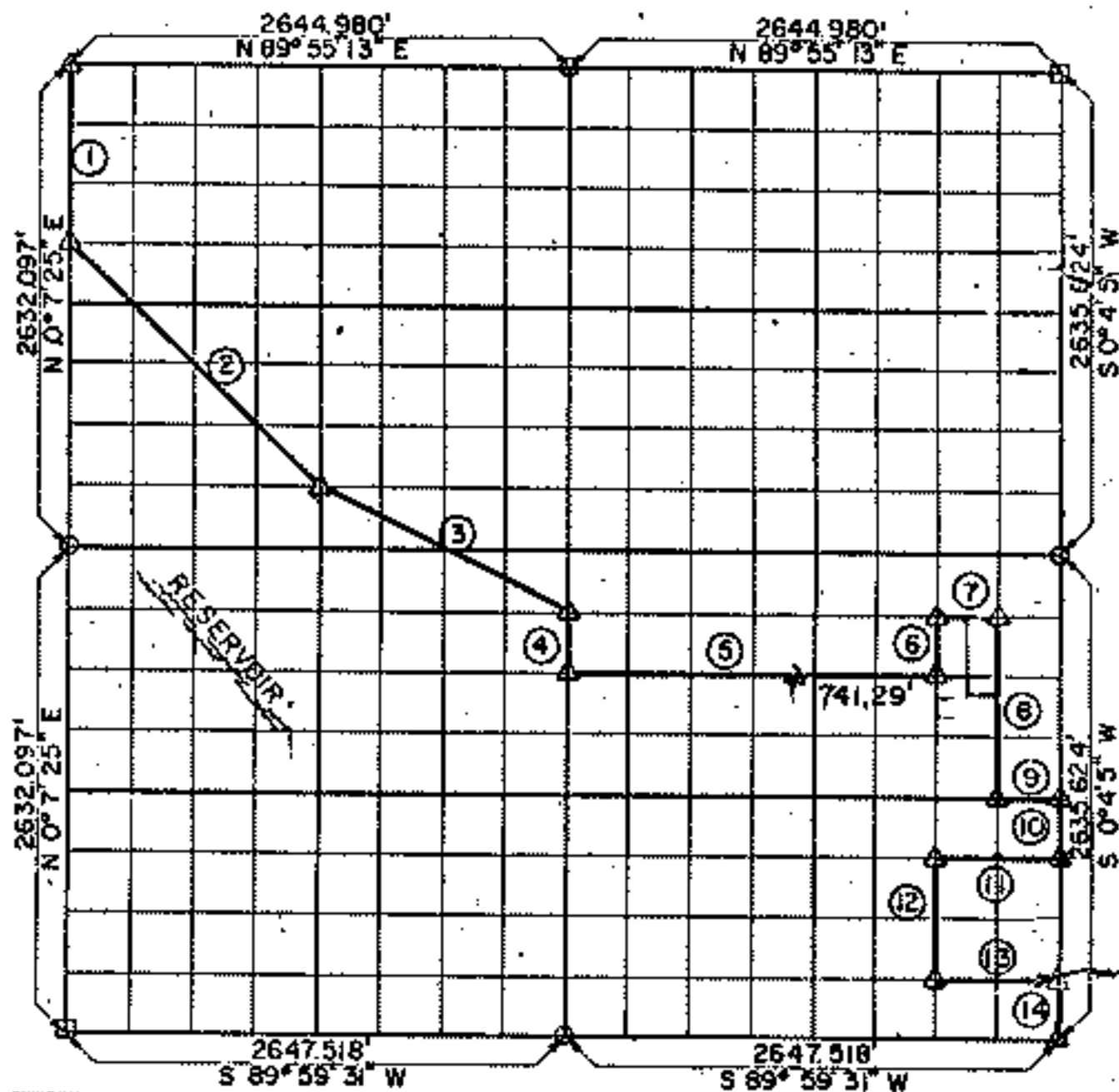


PARTIAL BOUNDARY SURVEYS
 AREA "F" FORT GIBSON LAKE
 GRAND RIVER, OKLAHOMA

Performed Under Contract Number DACW-56-71-C-0109

SEC 34 T 21 N R 19 E COUNTY MAYES



Course No.	Distance	Bearing	Course No.	Distance	Bearing
1	982.096'	S 0° 7' 25" W	14	329.453'	S 0° 4' 5" W
2	1864.008'	S 44° 57' 28" E			
3	1079.569'	S 63° 34' 57" E			
4	329.235'	S 0° 5' 45" W			
5	1984.920'	N 89° 58' 3" E			
6	329.798'	N 0° 4' 30" E			
7	330.801'	N 89° 57' 46" E			
8	568.278'	S 0° 4' 18" W			
9	330.860'	N 89° 58' 37" E			
10	329.452'	S 0° 4' 5" W			
11	661.761'	S 89° 58' 55" W			
12	658.798'	S 0° 4' 30" W			
13	661.840'	N 89° 59' 31" E			

Field Book No. 5-1828 Date April, 1971

CERTIFICATE OF SURVEY

I HEREBY CERTIFY THAT THE ABOVE PLAT IS A TRUE AND CORRECT REPRESENTATION OF THE SURVEY MADE IN SECTION 34, T. 21 N., R. 19 E., MAYES COUNTY, OKLA.

HOLWAY ENGINEERS INC.

Under the Supervision of
 S. ARMY ENGINEER DISTRICT, TULSA
 CORPS OF ENGINEER

LEGEND

- ▲ MONUMENT
- ORIGINAL CO.
- IRON PIN