

PARTIAL BOUNDARY SURVEY

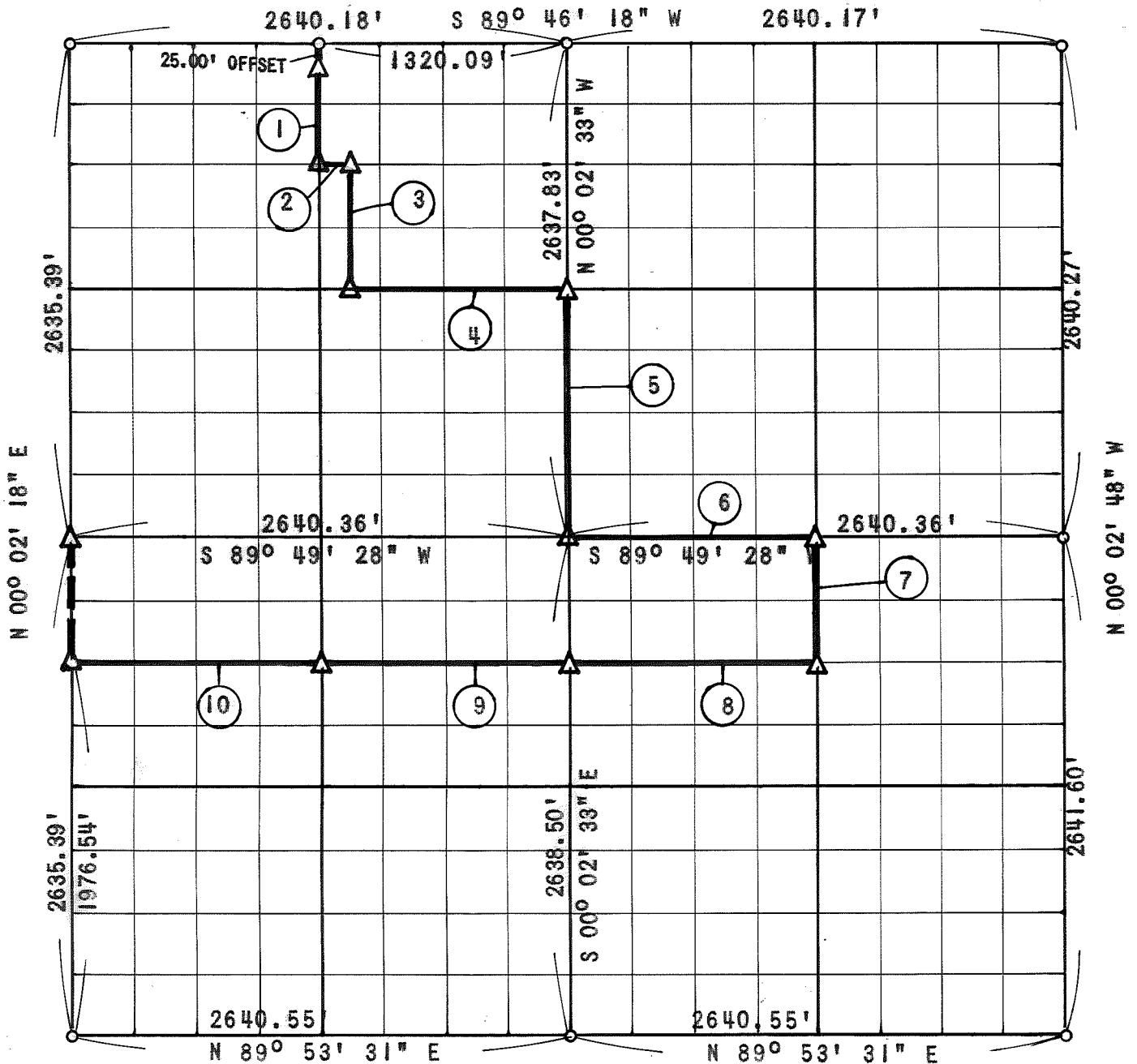
OOLOGAH RESERVOIR

VERDIGRAS RIVER, OKLAHOMA

Performed Under Contract Number DACW 56-70-C-0149

SEC. 5, T22N R16E

ROGERS COUNTY



Course No.	Distance	Bearing	Course No.	Distance	Bearing
1	659.15'	S 00° 02' 25" E			
2	165.01'	N 89° 47' 05" E			
3	659.19'	S 00° 02' 26" E			
4	1155.12'	N 89° 47' 53" E			
5	1318.92'	S 00° 02' 33" E			
6	1320.18'	N 89° 49' 28" E			
7	659.61'	S 00° 02' 40" E			
8	1320.29'	S 89° 50' 29" W			
9	1320.20'	S 89° 50' 29" W			
10	1320.20'	S 89° 50' 29" W			

FIELD BOOK NO. 0-224

Date: August 7, 1970

CERTIFICATE OF SURVEY

I HEREBY CERTIFY THAT THE ABOVE PLAT IS A TRUE AND CORRECT REPRESENTATION OF THE SURVEY MADE IN SECTION 5 T22N R16E ROGERS COUNTY, OKLAHOMA

SULLIVAN AND GILBERT, INC.

Under the Supervision of

U. S. ARMY ENGINEER DISTRICT, TULSA  
CORPS OF ENGINEERS

LEGEND

- ▲ Monument
- Original Corner
- Iron Pin

*William H. Gilbert*  
REGISTERED PROFESSIONAL ENGINEER