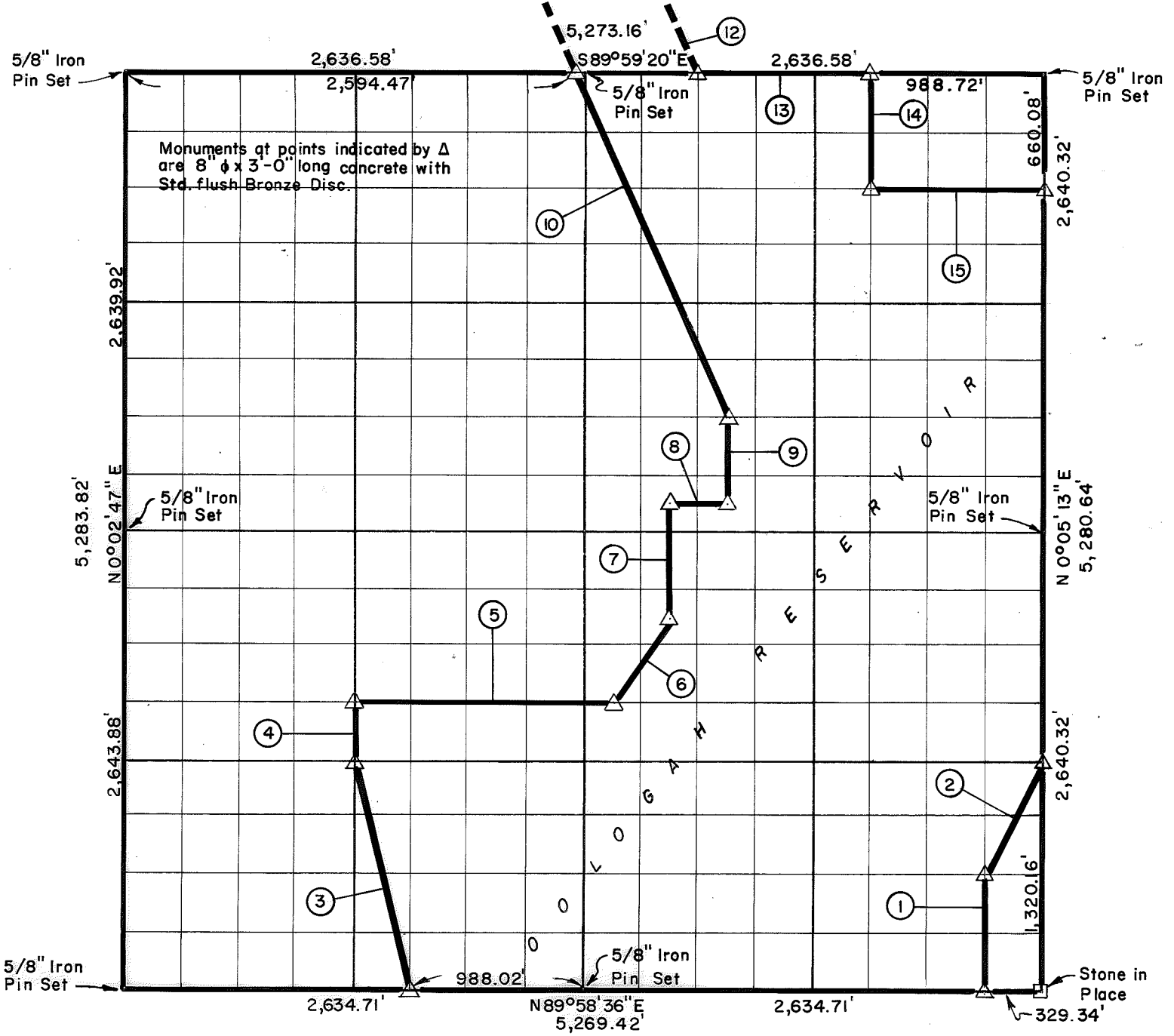


SEC. 13 - T 23 N - R 15 E, ROGERS COUNTY, OKLAHOMA



Course No.	Distance	Bearing	Course No.	Distance	Bearing
1	660.14'	N 0° 05' 04" E			
2	738.20'	N 26° 35' 08" E			
3	1,361.48'	N 13° 56' 32" W			
4	330.37'	N 0° 03' 23" E			
5	1,482.36'	S 89° 59' 57" E			
6	595.20'	N 33° 40' 27" E			
7	660.34'	N 0° 04' 14" E			
8	329.46'	S 89° 59' 05" E			
9	495.04'	N 0° 04' 23" E			
10	2,160.36'	N 23° 33' 36" W			
13	988.72'	S 89° 59' 20" E			
14	660.06'	S 0° 04' 45" W			
15	988.64'	S 89° 59' 16" E			

Book No. 0-189 Date: April 1965

I, Charles R. Keithline, a Registered Professional Engineer in the State of Oklahoma, do hereby certify that the above plat is a true and accurate survey of Sec. 13 - T23 N - R15 E, as made under my supervision.

CRAIG AND KEITHLINE
Consulting Engineers

Charles R. Keithline
CHARLES R. KEITHLINE
Reg. Prof. Engr. No. 2834 (Okla.)