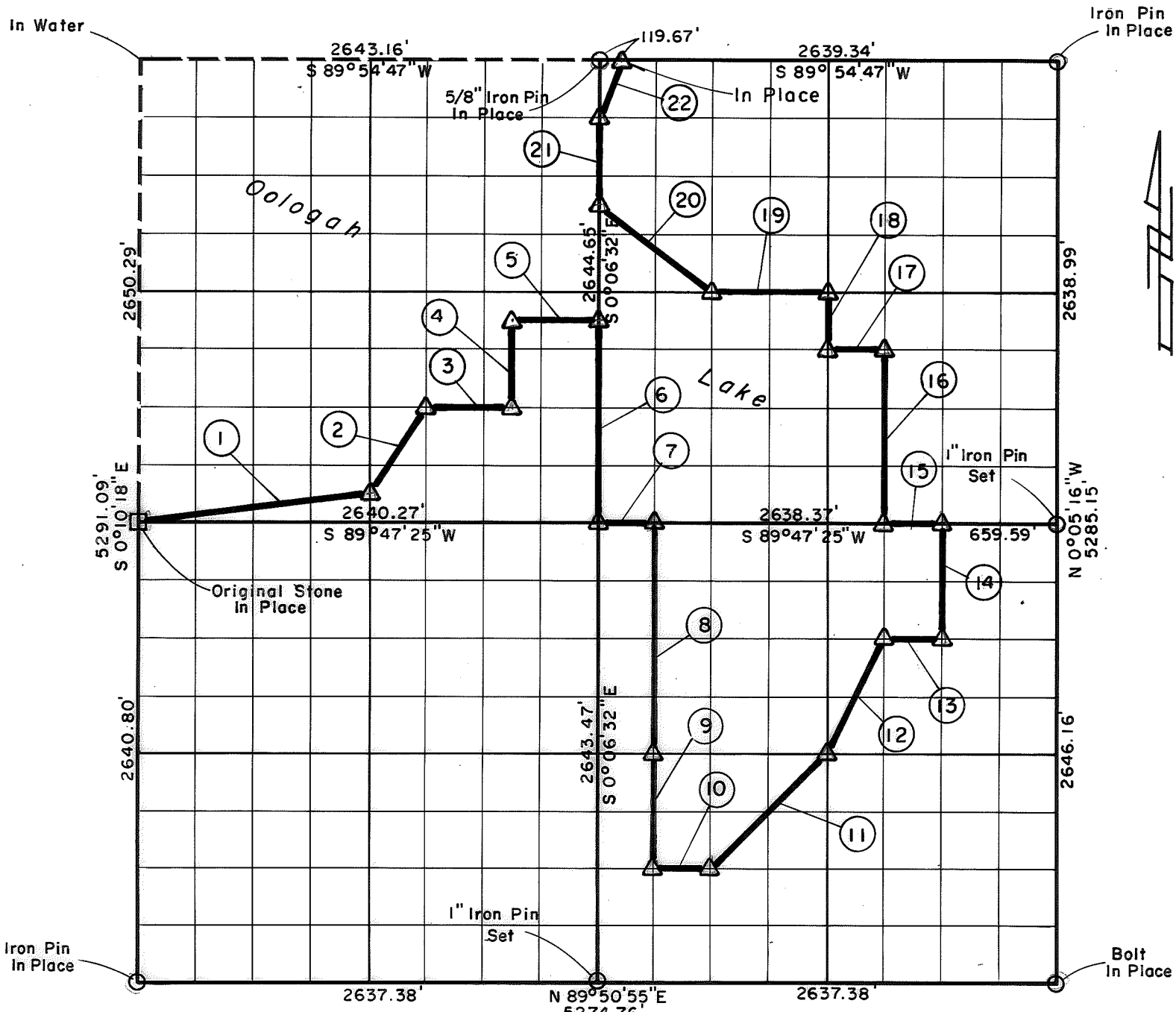


PARTIAL BOUNDARY SURVEYS  
**OOLOGAH LAKE, AREA "A"**  
**VERDIGRIS RIVER, OKLAHOMA**

Performed Under Contract Number DACW 56-76-C-0120

SEC. 10 , T. 23 N , R. 16 E , COUNTY ROGERS



Course No.	Distance	Bearing	Course No.	Distance	Bearing
1	1330.66'	N 82° 38' 49" E	14	661.37'	N 0° 05' 35" W
2	596.33'	N 33° 28' 21" E	15	329.80'	S 89° 47' 25" W
3	495.19'	N 89° 49' 16" E	16	990.41'	N 0° 05' 44" W
4	496.07'	N 0° 07' 14" W	17	329.84'	S 89° 50' 11" W
5	495.29'	N 89° 50' 39" E	18	330.23'	N 0° 05' 54" W
6	1157.03'	S 0° 06' 32" E	19	659.71'	S 89° 51' 07" W
7	329.80'	N 89° 47' 25" E	20	825.02'	N 53° 12' 12" W
8	1321.90'	S 0° 06' 22" E	21	495.87'	N 0° 06' 32" W
9	660.95'	S 0° 06' 22" E	22	351.53'	N 19° 47' 37" E
10	329.70'	N 89° 50' 03" E			
11	934.37'	N 44° 47' 26" E			
12	739.38'	N 26° 23' 22" E			
13	329.77'	N 89° 48' 18" E			

Field Book No. 0-263 Date 1976

CERTIFICATE OF SURVEY

I Hereby Certify That The Above Plat is a True and Correct Representation of The Survey Made in Sec. 10

T. 23 N , R. 16 E

**CRAIG & KEITHLINE**  
 Consulting Engineers

For

U.S. ARMY ENGINEER DISTRICT, TULSA  
 CORPS OF ENGINEERS

Δ MONUMENT  
 □ ORIGINAL CORNER  
 ○ IRON PIN

*Charles R. Keithline*

SHEET 1 of 1

CHARLES R. KEITHLINE  
 Registered Land Surveyor No. 517