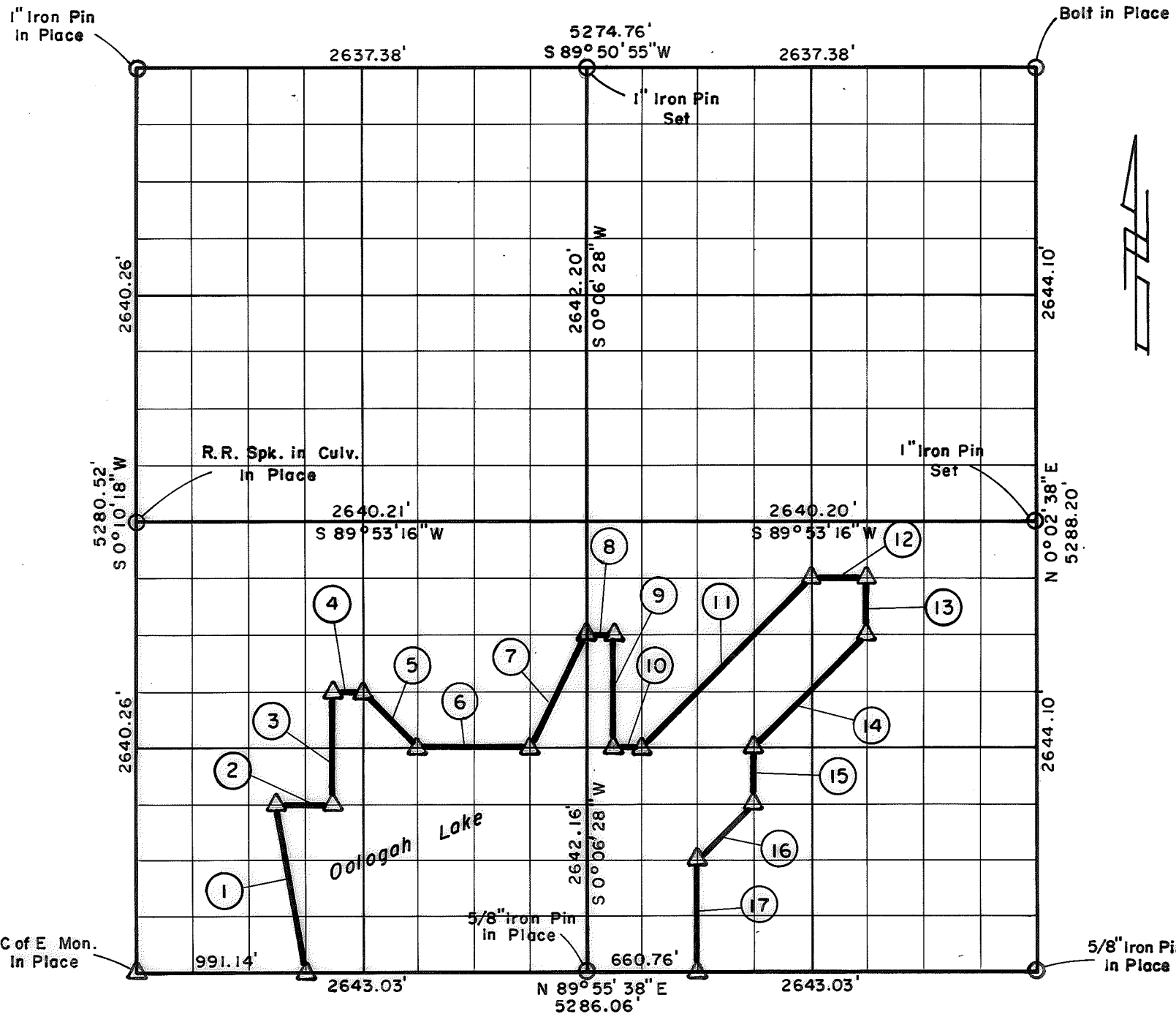


PARTIAL BOUNDARY SURVEYS
 OOLOGAH LAKE, AREA "A"
 VERDIGRIS RIVER, OKLAHOMA

Performed Under Contract Number DACW 56-76-C-0120

SEC. 15 , T. 23 N , R. 16 E , COUNTY ROGERS



Course No.	Distance	Bearing	Course No.	Distance	Bearing
1	1003.35'	N 9° 19' 29" W	14	935.57'	S 44° 58' 06" W
2	330.25'	N 89° 54' 04" E	15	330.36'	S 0° 05' 01" W
3	660.27'	N 0° 08' 37" E	16	467.83'	S 44° 59' 38" W
4	165.07'	N 89° 54' 09" E	17	660.66'	S 0° 05' 30" W
5	465.99'	S 44° 58' 48" E			
6	660.40'	N 89° 54' 27" E			
7	739.50'	N 26° 37' 40" E			
8	165.06'	N 89° 53' 51" E			
9	660.57'	S 0° 06' 14" W			
10	165.10'	N 89° 54' 27" E			
11	1403.39'	N 44° 58' 34" E			
12	330.07'	N 89° 53' 33" E			
13	330.42'	S 0° 04' 04" W			

Field Book No. 0-262 Date 1976

CERTIFICATE OF SURVEY

I Hereby Certify That The Above Plat is a True and Correct Representation of The Survey Made in Sec. 15 U.S. ARMY ENGINEER DISTRICT, TULSA T. 23 N, R. 16 E

CRAIG & KEITHLINE
 Consulting Engineers

For

U.S. ARMY ENGINEER DISTRICT, TULSA
 CORPS OF ENGINEERS

- △ MONUMENT
- ORIGINAL CORNER
- IRON PIN

Charles R. Keithline
 CHARLES R. KEITHLINE
 Registered Land Surveyor No. 517