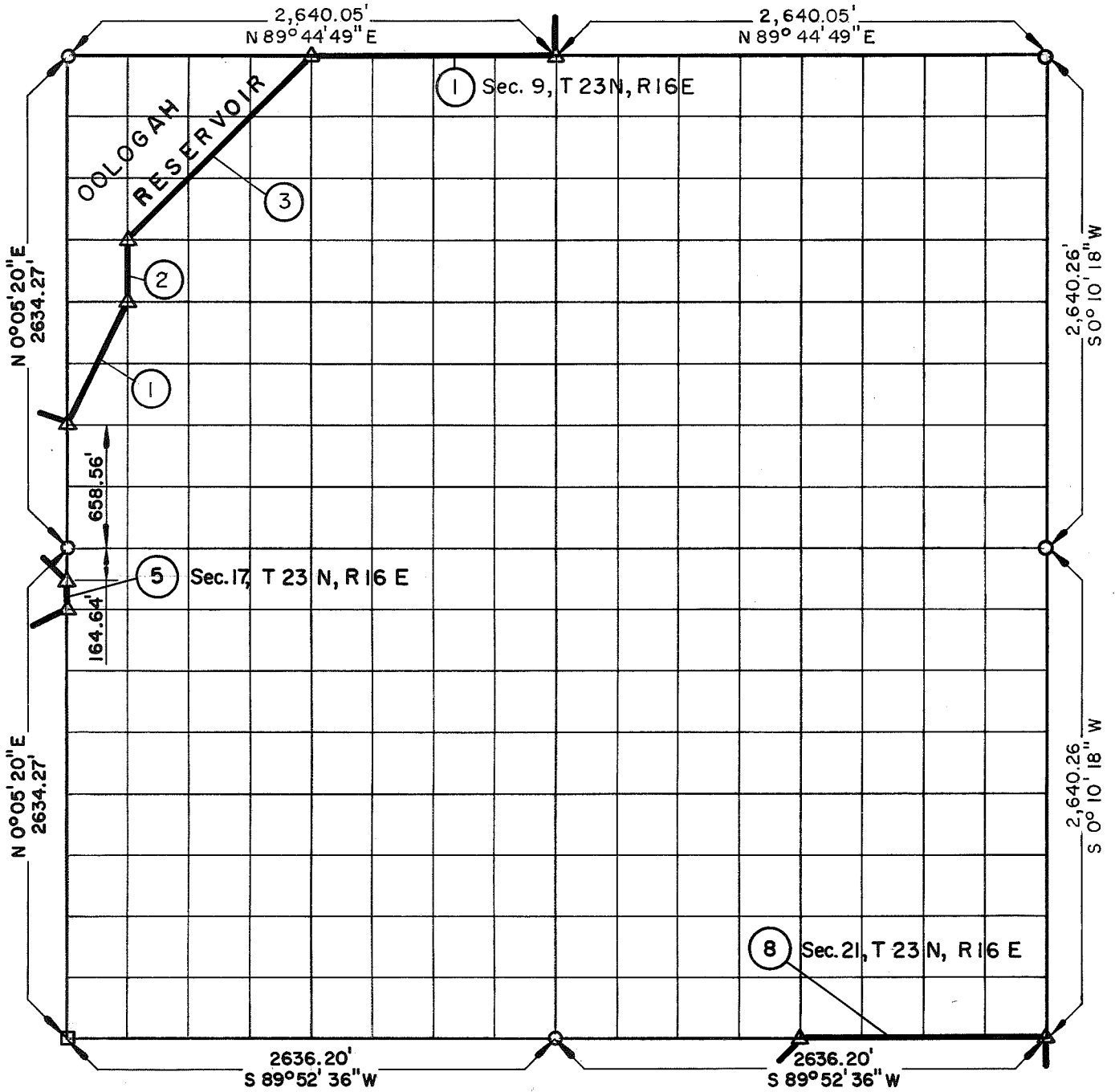


PARTIAL BOUNDARY SURVEYS

VERDIGRIS RIVER, OKLAHOMA

SEC. 16 T 23 N R 16 E COUNTY ROGERS



Course No.	Distance	Bearing	Course No.	Distance	Bearing
1	738.16	N - 26° 37' 59" E			
2	329.33	N - 0° 05' 39" E			
3	1,402.89	N - 44° 58' 43" E			

CERTIFICATE OF SURVEY

I HEREBY CERTIFY THAT THE ABOVE PLAT IS A TRUE AND CORRECT REPRESENTATION OF THE SURVEY MADE IN SECTION 16, T 23 N, R 16 E, ROGERS COUNTY, OKLAHOMA

*Jack C. Cox*  
REGISTERED LAND SURVEYOR

Field Book No. 0-251, Date 7-19-71

K.N. COX & ASSOCIATES - ENGINEERS

Under the Supervision of

U.S. ARMY ENGINEER DISTRICT, TULSA  
CORPS OF ENGINEERS

SHEET 1 of 1

LEGEND

- △ MONUMENT
- ORIGINAL CORNER
- IRON PIN