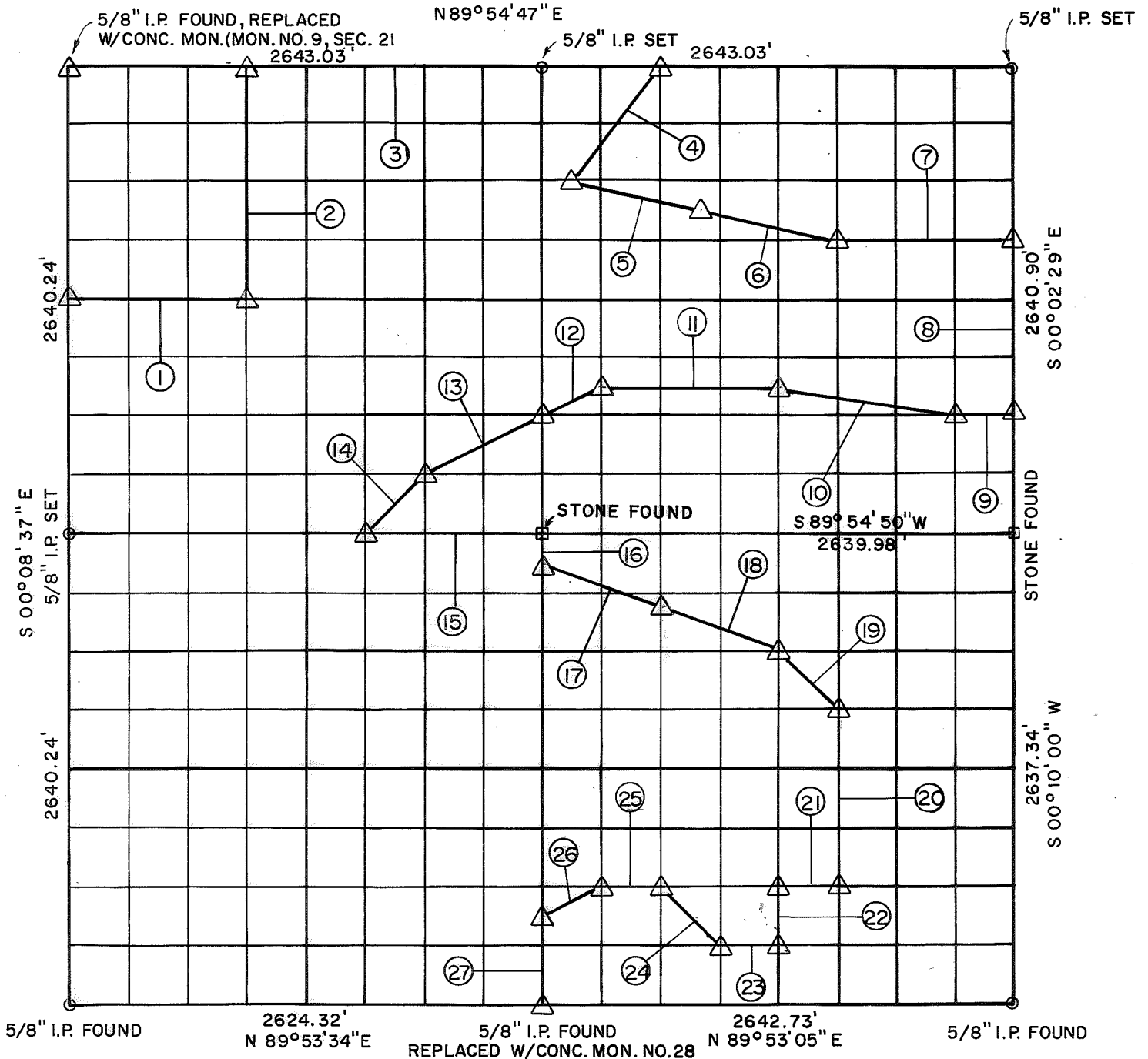


PARTIAL BOUNDARY SURVEYS

OOLOGAH RESERVOIR
VERDIGRIS RIVER, OKLAHOMA

Performed Under Contract Number DACW56-70-C-0065

SEC 22 T-23-N R-16-E COUNTY ROGERS



Course No.	Distance	Bearing	Course No.	Distance	Bearing
1	990.82'	N 89° 55' 11" E	14	466.69'	S 44° 54' 41" W
2	1320.24'	N 00° 07' 47" W	15	990.51'	N 89° 55' 36" E
3	2312.65'	N 89° 54' 47" E	16	164.92'	S 00° 13' 34" W
4	825.41'	S 36° 47' 41" W	17	703.71'	S 69° 30' 43" E
5	761.62'	S 77° 25' 00" E	18	703.72'	S 69° 30' 43" E
6	761.62'	S 77° 25' 00" E	19	465.42'	S 44° 59' 04" E
7	990.69'	N 89° 54' 48" E	20	989.25'	S 00° 11' 21" W
8	990.34'	S 00° 02' 29" E	21	330.34'	S 89° 53' 31" W
9	330.09'	S 89° 54' 50" W	22	329.75'	S 00° 11' 47" W
10	1003.39'	N 80° 37' 24" W	23	330.34'	S 89° 53' 18" W
11	990.32'	S 89° 54' 50" W	24	465.48'	N 44° 59' 19" W
12	369.04'	S 63° 20' 46" W	25	330.34'	S 89° 53' 31" W
13	738.14'	S 63° 21' 36" W	26	370.20'	S 63° 26' 11" W
			27	494.76'	S 00° 13' 34" W

CERTIFICATE OF SURVEY

Field Book No. 0-218

Date May, 1970

I HEREBY CERTIFY THAT THE ABOVE PLAT IS A TRUE AND CORRECT REPRESENTATION OF THE SURVEY MADE IN SECTION 22, T23-N, R16-E, ROGERS COUNTY, OKLAHOMA.

E.H. SCHMIDT & ASSOC., INC.

Under the Supervision of

U.S. ARMY ENGINEER DISTRICT, TULSA
CORPS OF ENGINEERS

SHEET 1 of 1

LEGEND

- Δ MONUMENT
- ORIGINAL CORNER
- IRON PIN
- * COMPUTED DISTANCE

E.H. Schmidt
REGISTERED PROFESSIONAL ENGINEER