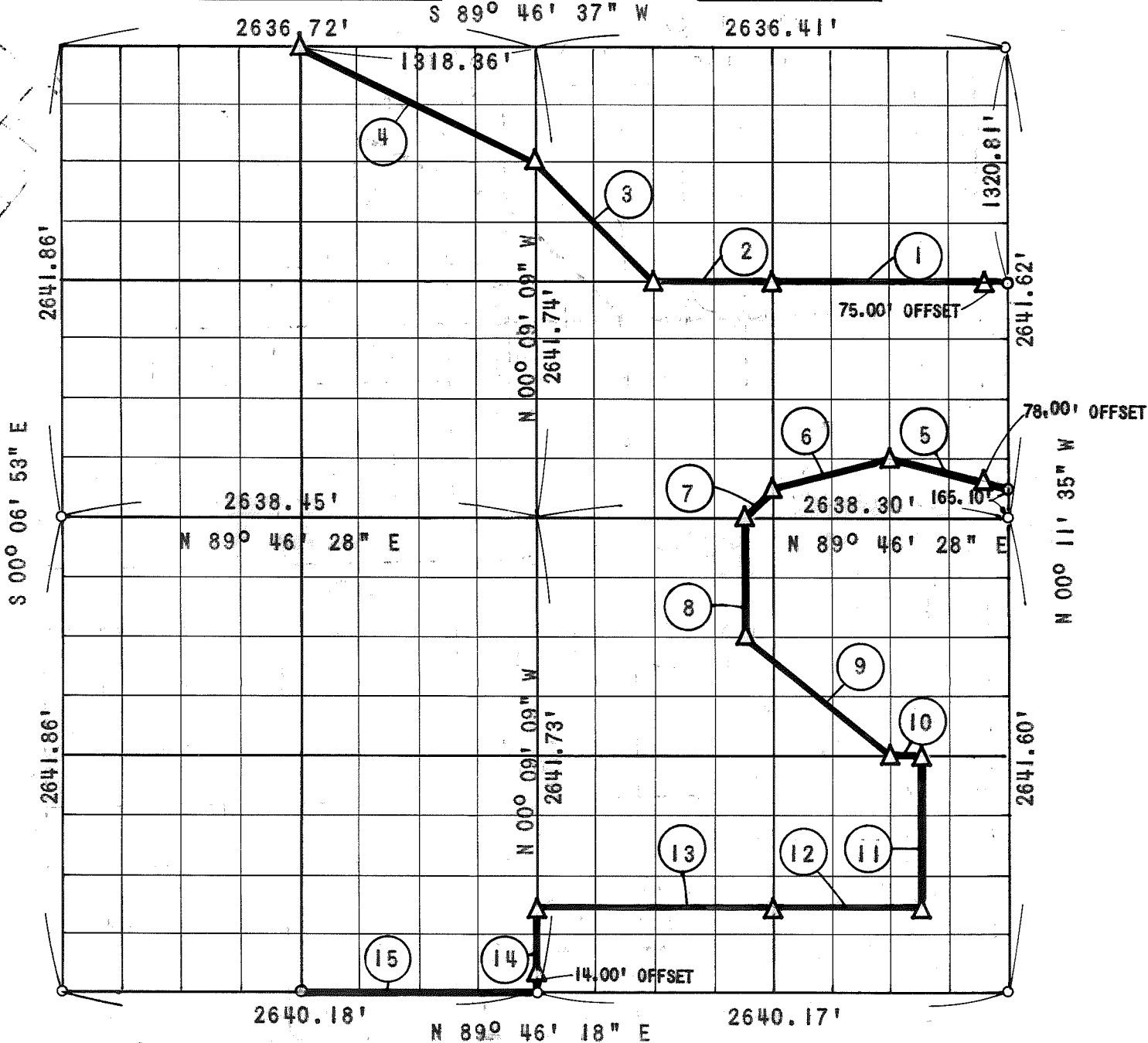


PARTIAL BOUNDARY SURVEY
 OOLOGAH RESERVOIR
 VERDIGRAS RIVER, OKLAHOMA

Performed Under Contract Number DACW 56-70-C-0149

SEC. 32 T23N R16E

ROGERS COUNTY



Course No.	Distance	Bearing	Course No.	Distance	Bearing
1	1318.67'	S 89° 46' 32" W	13	1319.91'	S 89° 46' 20" W
2	659.34'	S 89° 46' 32" W	14	495.33'	S 00° 09' 08" E
3	932.63'	N 45° 08' 26" W	15	1320.09'	S 89° 46' 18" W
4	1473.80'	N 63° 36' 01" W			
5	679.78'	N 76° 10' 08" W			
6	680.01'	S 75° 43' 23" W			
7	233.45'	S 44° 45' 51" W			
8	660.42'	S 00° 10' 13" E			
9	1056.08'	S 51° 31' 08" E			
10	165.74'	N 89° 46' 23" E			
11	825.55'	S 00° 11' 07" E			
12	824.94'	S 89° 46' 20" W			

Field Book Number 0-225

Date: August 7, 1970

CERTIFICATE OF SURVEY

I HEREBY CERTIFY THAT THE ABOVE PLAT IS A TRUE AND CORRECT REPRESENTATION OF THE SURVEY MADE IN SEC. 32 T23N R16E ROGERS COUNTY, OKLAHOMA

SULLIVAN AND GILBERT, INC.
 Under the Supervision of
 U.S. ARMY ENGINEER DISTRICT, TULSA
 CORPS OF ENGINEERS

LEGEND
 ▲ Monument
 □ Original Corner
 ○ Iron Pin

William F. Gilbert
 REGISTERED PROFESSIONAL ENGINEER