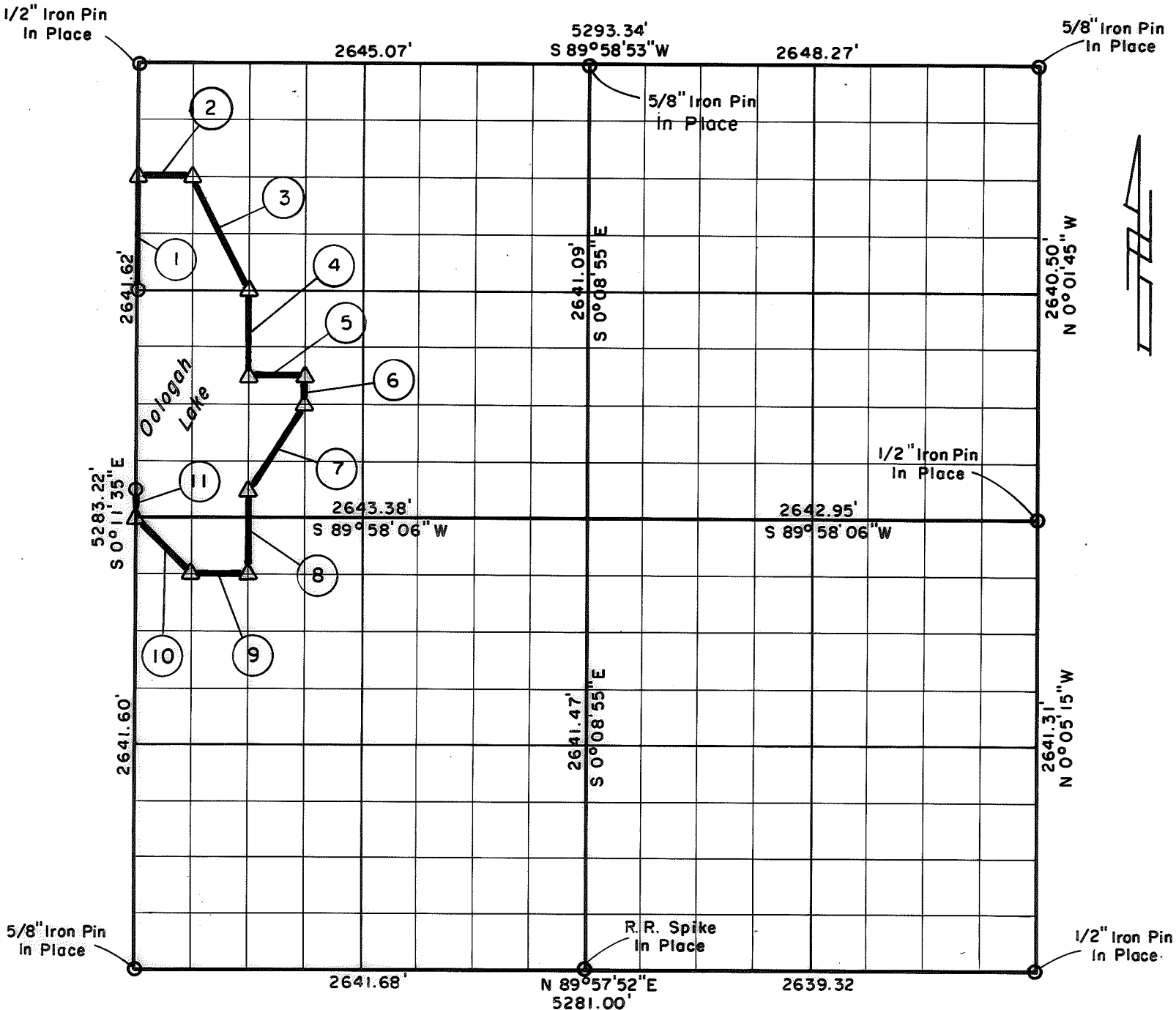


PARTIAL BOUNDARY SURVEYS
OOLOGAH LAKE, AREA "A"
VERDIGRIS RIVER, OKLAHOMA

Performed Under Contract Number DACW 56-76-C-0120

SEC. 33, T. 23N, R. 16E, COUNTY ROGERS



Course No.	Distance	Bearing	Course No.	Distance	Bearing
1	660.41'	N 0°11'35" W			
2	330.58'	N 89°58'42" E			
3	739.32'	S 26°44'34" E			
4	495.28'	S 0°10'55" E			
5	330.49'	N 89°58'21" E			
6	165.09'	S 0°10'35" E			
7	594.68'	S 33°34'45" W			
8	495.29'	S 0°10'55" E			
9	330.40'	S 89°57'04" W			
10	467.77'	N 45°07'42" W			
11	165.10'	N 0°11'35" W			

Field Book No. 0-259 Date 1976

CRAIG & KEITHLINE
 Consulting Engineers

For

U.S. ARMY ENGINEER DISTRICT, TULSA
 CORPS OF ENGINEERS

Δ MONUMENT
 □ ORIGINAL CORNER
 ○ IRON PIN

CERTIFICATE OF SURVEY

I hereby certify that the above plat is a true and correct representation of the survey made in Sec. 33, T. 23 N., R. 16 E.

Charles R. Keithline
 CHARLES R. KEITHLINE
 Registered Land Surveyor No. 517