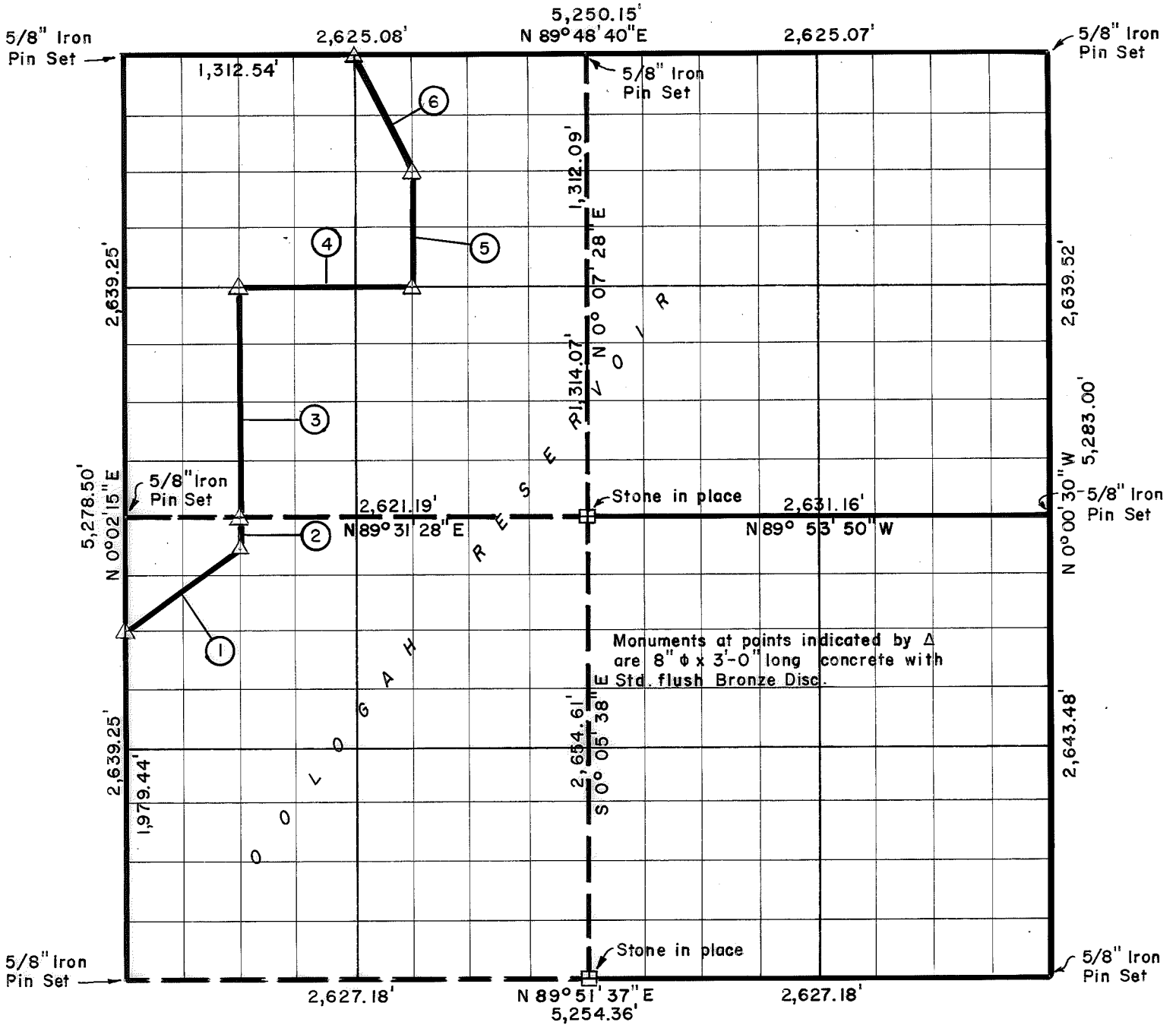


SEC. 5-T 23 N-R 16 E, ROGERS COUNTY, OKLAHOMA



Course No.	Distance	Bearing	Course No.	Distance	Bearing
1	824.62'	N 52° 40' 10" E			
2	165.19'	N 0° 00' 17" E			
3	1,318.24'	N 0° 03' 33" E			
4	983.68'	N 89° 38' 45" E			
5	657.45'	N 0° 05' 30" E			
6	733.34'	N 26° 29' 18" W			

Book No. 0-192 Date: April 1965

I, Charles R. Keithline, a Registered Professional Engineer in the State of Oklahoma, do hereby certify that the above plat is a true and accurate survey of Sec. 5 - T23 N-R16 E, as made under my supervision.

CRAIG AND KEITHLINE
Consulting Engineers

Charles R. Keithline
CHARLES R. KEITHLINE
Reg. Prof. Engr. No. 2834 (Okla.)