

PLAT OF BOUNDARY SURVEY

OOLOGAH RESERVOIR, VERDIGRIS RIVER,

SEC. 14, T 24 N--R 16 E

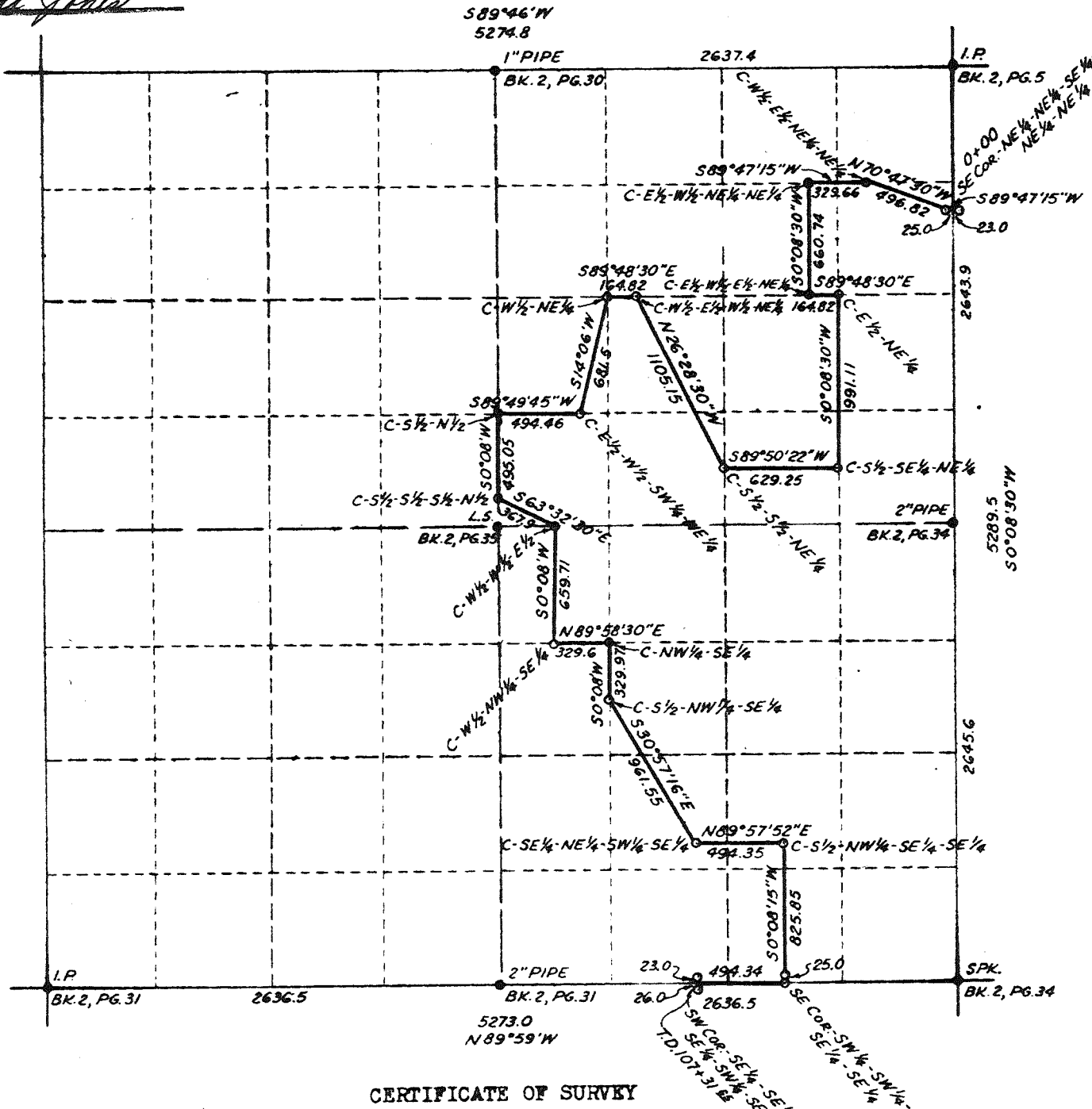
ROGERS COUNTY, OKLAHOMA

STATE OF OKLAHOMA  
COUNTY OF ROGERS  
FILED

DEC 30 1964

SCALE 6 INCHES = 1 MILE

at 9<sup>30</sup> o'clock P.M.  
CHARLES ALLTON, COUNTY CLERK  
By Wanda Jones



CERTIFICATE OF SURVEY

I, W. R. Meeks, a competent land surveyor and the duly elected Surveyor for Nowata County, Oklahoma, do hereby certify that I have accurately surveyed and staked the boundary line of the OOLOGAH RESERVOIR, VERDIGRIS RIVER, in SEC. 14, T 24 N--R 16 E, Rogers County, Oklahoma, according to the deeds of record thereof, and specifically described as follows:

Bearings, distances, corner descriptions and total length of boundary line shown on plat.

Survey recorded in Rogers County Field Book No. 2, Pages, 39 to 48, inclusive.

I further certify that the above plat and description are true and correct representations of said survey.

Witness my hand and seal this 23rd. day of December, 1964

W. R. Meeks  
Nowata County Surveyor