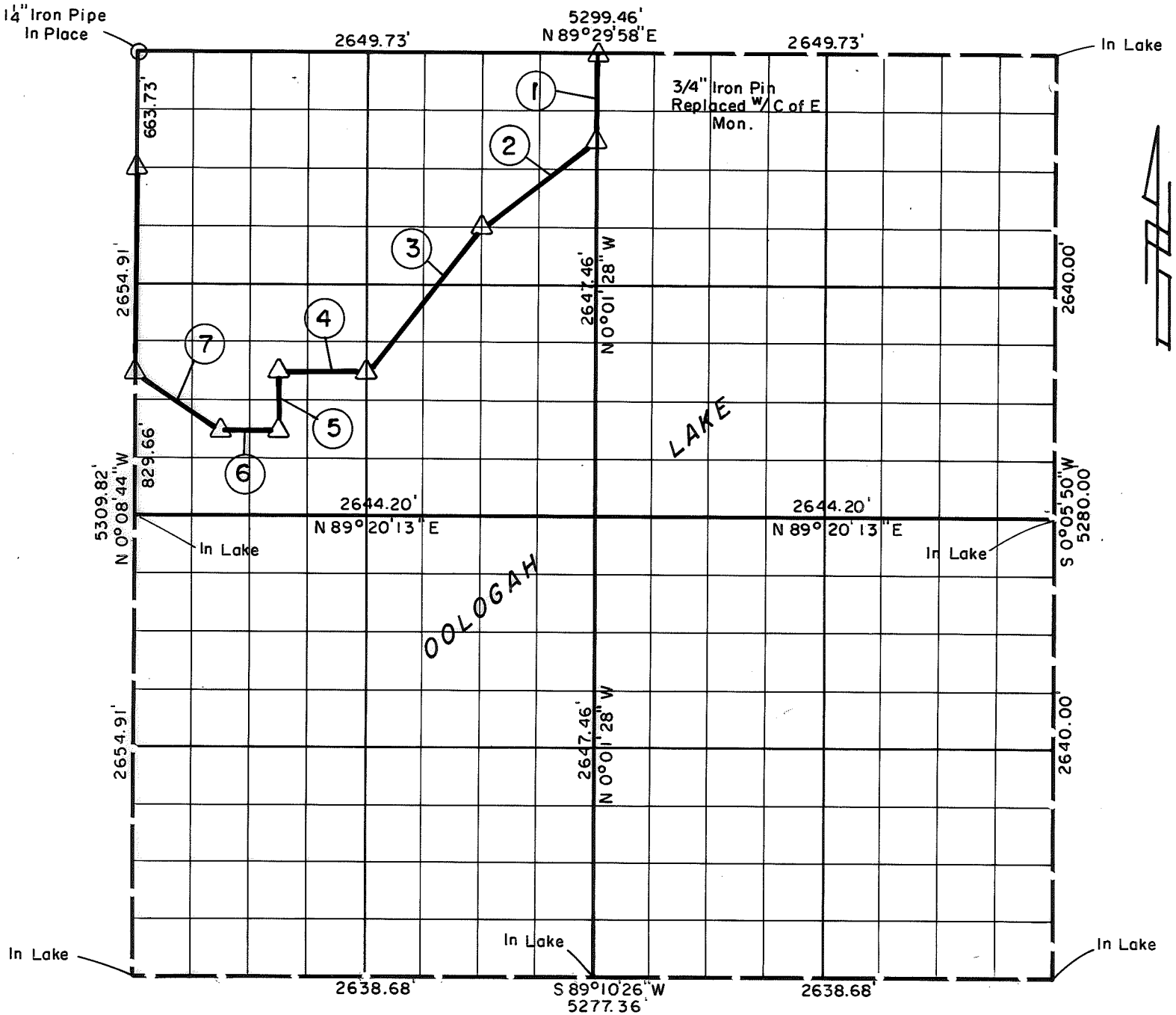


PARTIAL BOUNDARY SURVEYS
OOLOGAH LAKE, AREA "A"
VERDIGRIS RIVER, OKLAHOMA

Performed Under Contract Number DACW 56-77-C-0052

SEC. 16 , T. 24 N. , R. 16 E. , COUNTY ROGERS



Course No.	Distance	Bearing	Course No.	Distance	Bearing
1	496.40'	S 0°01'28" E			
2	831.08'	S52°45'52" W			
3	1064.73'	S38°21'06" W			
4	496.11'	S89°23'16" W			
5	331.57'	S 0°06'28" E			
6	330.65'	S 89°22'03" W			
7	594.42'	N 56°41'44" W			
8	1161.52'	N 0°08'44" W			

CERTIFICATE OF SURVEY Field Book No. 0-284 Date 77

CRAIG & KEITHLINE
 Consulting Engineers

I Hereby Certify That The Above Plat is a True and Correct Representation of The Survey Made in Sec. 16 T. 24 N. R. 16 E. U.S. ARMY ENGINEER DISTRICT, TULSA CORPS OF ENGINEERS

- Δ MONUMENT
- ORIGINAL CORNER
- IRON PIN

James Dale Nickle
 Registered Land Surveyor No. 78