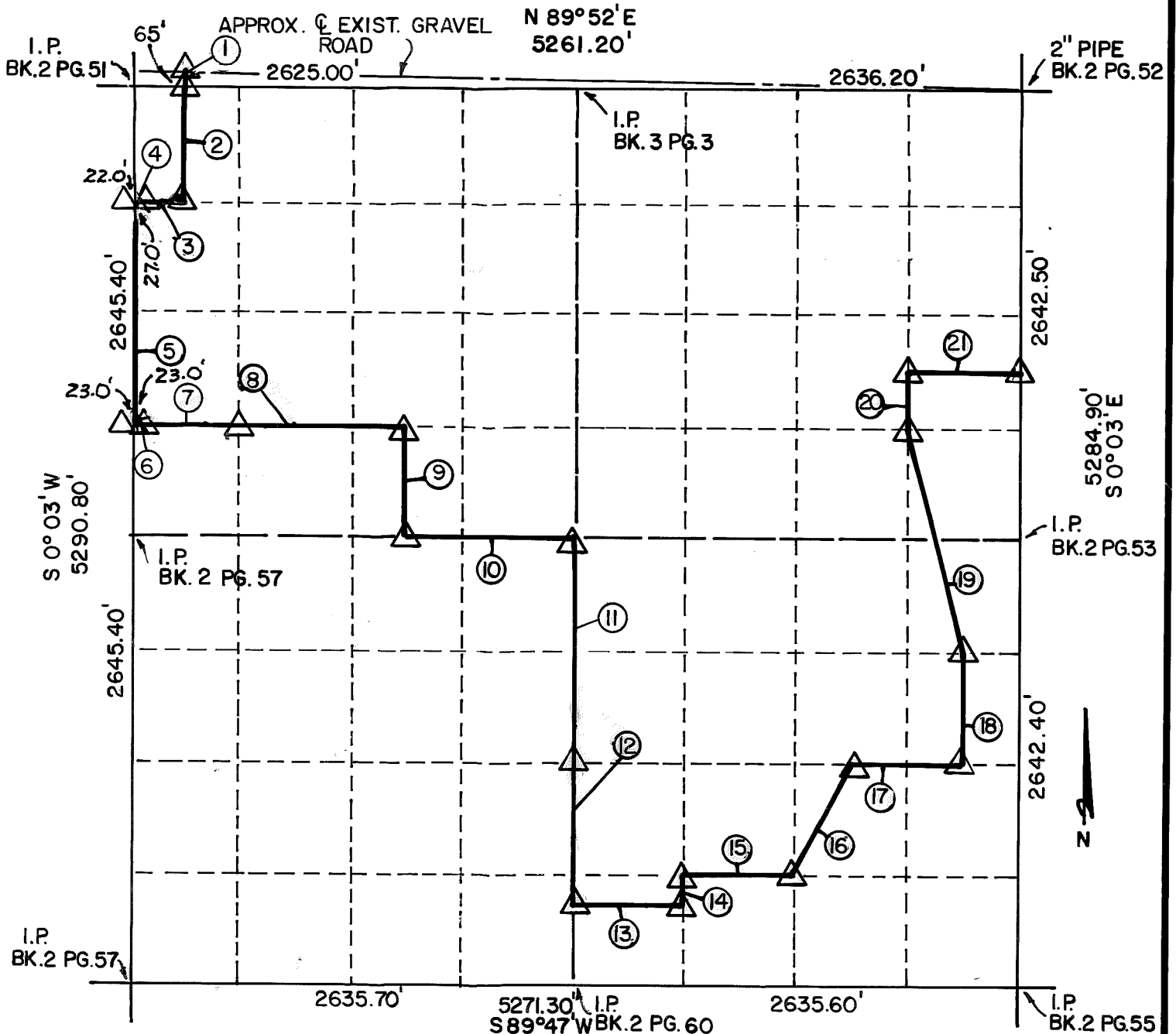


# BOUNDARY LINE DELINEATION & REMONUMENTATION SURVEY PLAT

OOLOGAH LAKE, OKLAHOMA  
SEC. 26, T-24-N R-16-E COUNTY

ROGERS

PARCEL NO. \_\_\_\_\_ Performed Under Contract No. DACA 56-86-D-0041



Course No.	Distance	Bearing	Course No.	Distance	Bearing
1	65.00'	S 0° 02' 30" W	14	165.22'	N 0° 03' 18" W
2	661.30'	S 0° 02' 30" W	15	658.91'	N 89° 47' 29" E
3	301.30'	S 89° 51' 30" W	16	739.94'	N 26° 23' 31" E
4	49.00'	S 89° 51' 30" W	17	658.94'	N 89° 47' 58" E
5	1322.70'	S 0° 03' 00" W	18	660.64'	N 0° 03' 03" W
6	46.00'	N 89° 50' 30" E	19	1361.14'	N 14° 03' 32" W
7	634.30'	N 89° 50' 30" E	20	330.38'	N 0° 03' 06" W
8	986.00'	N 89° 50' 30" E	21	659.00'	N 89° 50' 06" E
9	661.17'	S 0° 01' 00" E			
10	986.40'	N 89° 50' 00" E			
11	1321.95'	S 0° 04' 00" E			
12	826.22'	S 0° 04' 00" E			
13	658.91'	N 89° 47' 22" E			

Field Book No. 0-309 Date 9-23-86

**CERTIFICATE OF SURVEY**

I Hereby Certify That The Above Plat Is a True and Correct Representation of the Survey.

**SCOTT & ASSOCIATES INC.  
LAND SURVEYORS**

U.S. ARMY CORPS OF ENGINEERS  
TULSA DISTRICT

- LEGEND —
- △ MONUMENT
  - ORIGINAL CORNER
  - IRON PIN W/ CAP

*Basil E. Scott, Jr.*  
BASIL E. SCOTT, JR. L.S. 545