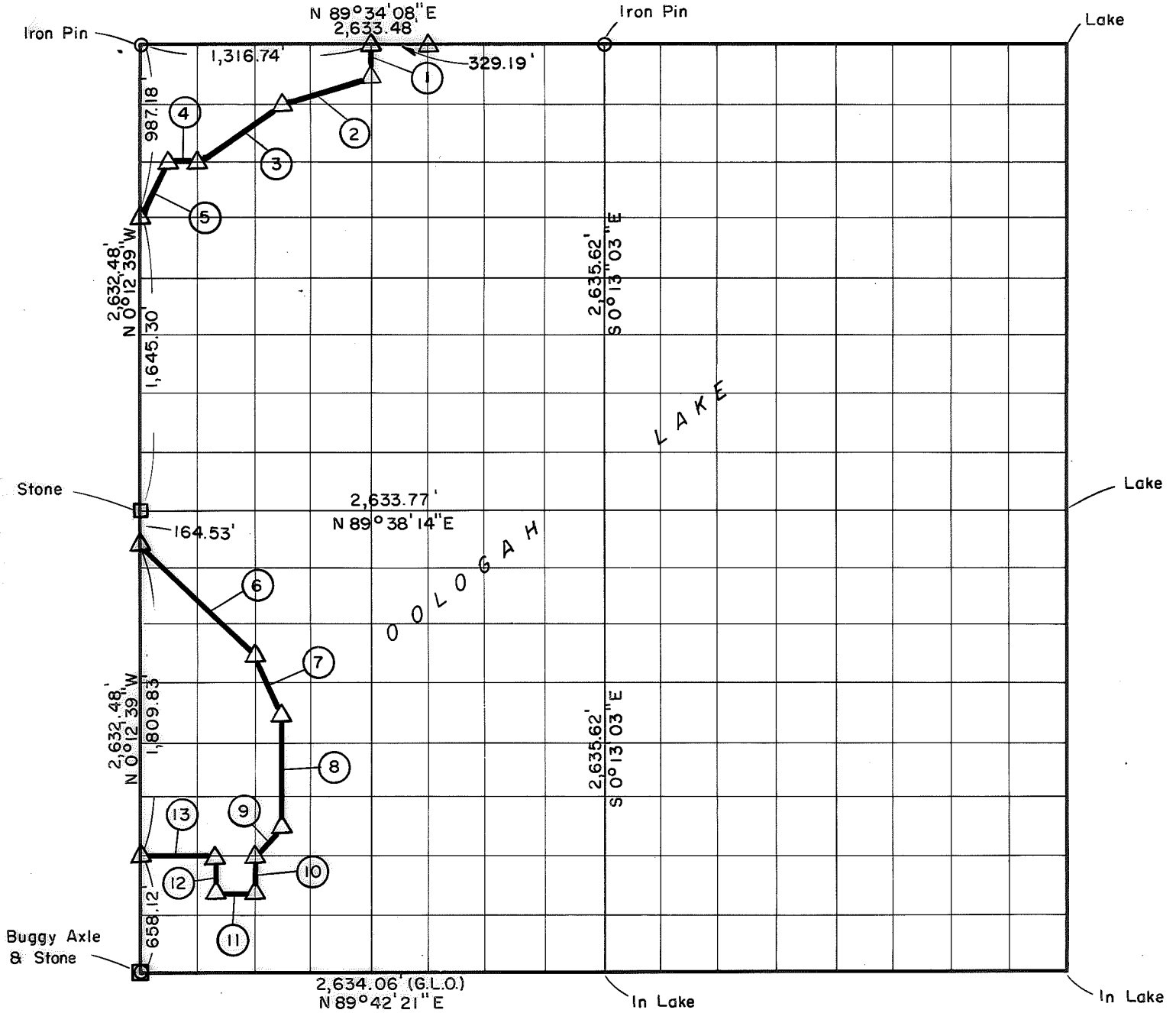


SEC. 29, T-24 - N, R-16 - E,

ROGERS COUNTY, OKLAHOMA



Date Surveyed April, 1971

Book No. O-241

Scale: 1: 10,000

COURSE NO.	DISTANCE	BEARING	COURSE NO.	DISTANCE	BEARING
1	164.63'	S 0° 12' 51" E			
2	521.08'	S 71° 09' 36" W			
3	594.42'	S 55° 57' 32" W			
4	164.60'	S 89° 35' 09" W			
5	368.46'	S 26° 19' 25" W			
6	929.91'	S 45° 17' 29" E			
7	367.72'	S 26° 48' 27" E			
8	658.37'	S 0° 12' 46" E			
9	232.99'	S 44° 44' 40" W			
10	208.71'	S 0° 12' 45" E			
11	208.71'	S 89° 41' 19" W			
12	208.71'	N 0° 12' 45" W			
13	449.79'	S 89° 41' 19" W			

PARTIAL BOUNDARY SURVEYS, OOLOGAH LAKE, VERDIGRIS RIVER, OKLAHOMA

BY

CRAIG AND KEITHLINE

CONSULTING ENGINEERS

FOR

DEPARTMENT OF THE ARMY, CORPS OF ENGINEERS, TULSA DISTRICT, UNDER CONTRACT NO. DACW 56-71-C-0113

I, Charles R. Keithline, a Registered Land Surveyor in the State of Oklahoma do hereby certify that the above plat is a true and accurate survey of Section 29, T-24-N, R-16-E, as made under my supervision.

Charles R. Keithline

CHARLES R. KEITHLINE, Reg. No. 517 (Oklahoma)

LEGEND

- △ Std. C. of E. Conc. Monument
- Iron Pin
- Original G.L.O. Marker