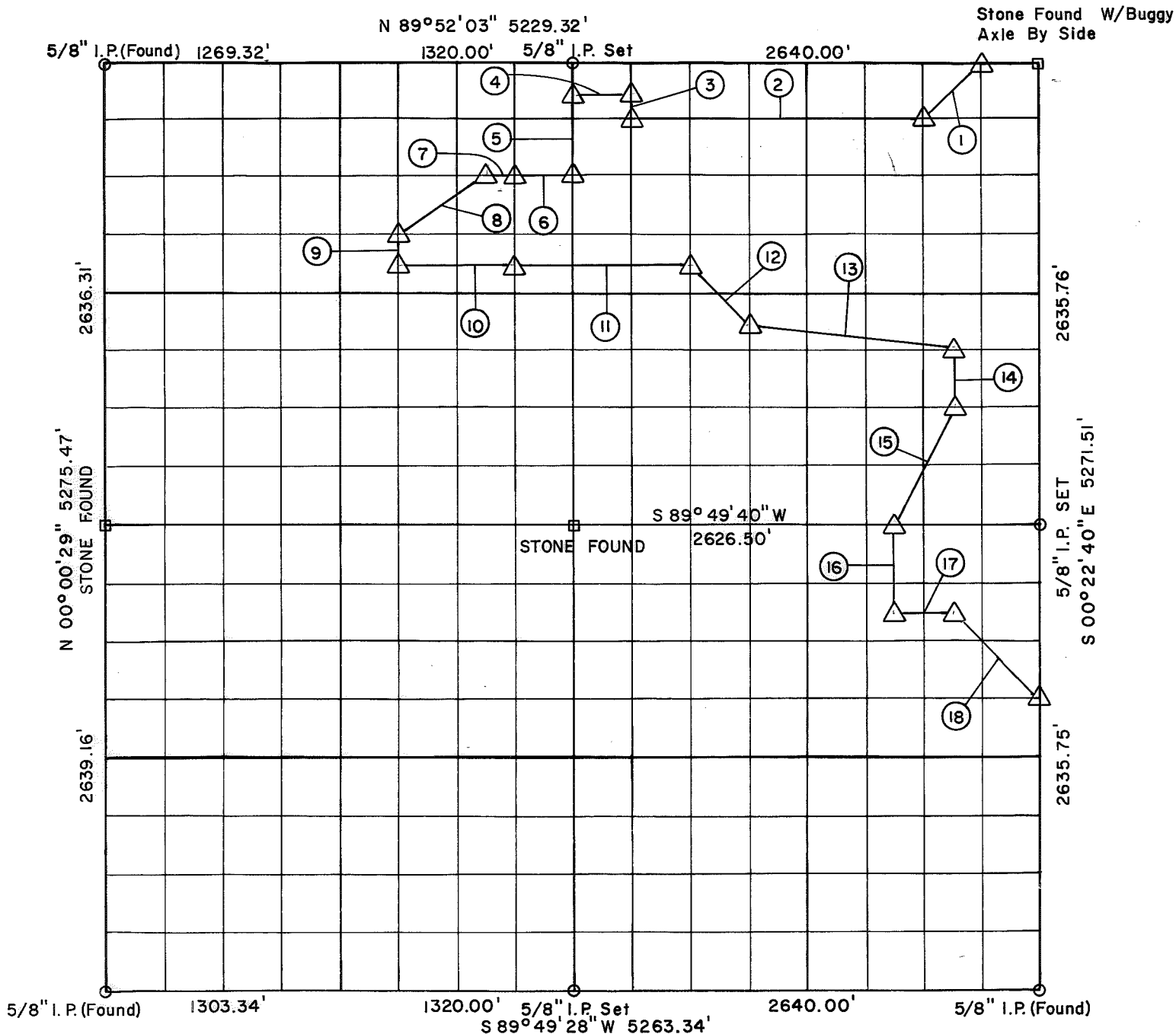


PARTIAL BOUNDARY SURVEYS

OOLOGAH RESERVOIR
VERDIGRIS RIVER, OKLAHOMA

Performed Under Contract Number DACW 56-70-C-0065

SEC 31 T-24-N R-16-E COUNTY ROGERS



Course No.	Distance	Bearing	Course No.	Distance	Bearing
1	465.05'	S 44°45'03" W	14	329.52'	S 00°25'58" E
2	1319.12'	S 89°51'46" W	15	734.94'	S 26°05'57" W
3	164.83'	N 00°35'52" W	16	494.20'	S 00°17'15" E
4	329.78'	S 89°51'55" W	17	328.63'	N 89°49'38" E
5	494.52'	S 00°38'04" E	18	699.26'	S 45°12'10" E
6	329.56'	S 89°51'28" W			
7	165.00'	S 89°52'28" W			
8	592.21'	S 56°01'47" W			
9	164.84'	S 00°40'16" E			
10	660.00'	N 89°52'46" E			
11	987.75'	N 89°51'01" E			
12	467.39'	S 45°18'31" E			
13	839.74'	S 78°50'25" E			

CERTIFICATE OF SURVEY Field Book No. 0-216 Date: May, 1970

I HEREBY CERTIFY THAT THE ABOVE PLAT IS A TRUE AND CORRECT REPRESENTATION OF THE SURVEY MADE IN SECTION 31, T 24 N, R 16 E, ROGERS COUNTY, OKLAHOMA

E.H. SCHMIDT & ASSOC., INC.
Under the Supervision of
U.S. ARMY ENGINEER DISTRICT, TULSA
CORPS OF ENGINEERS
SHEET 1 of 1

LEGEND
 Δ MONUMENT
 □ ORIGINAL CORNER
 ○ IRON PIN
 * COMPUTED DISTANCE

REGISTERED PROFESSIONAL ENGINEER