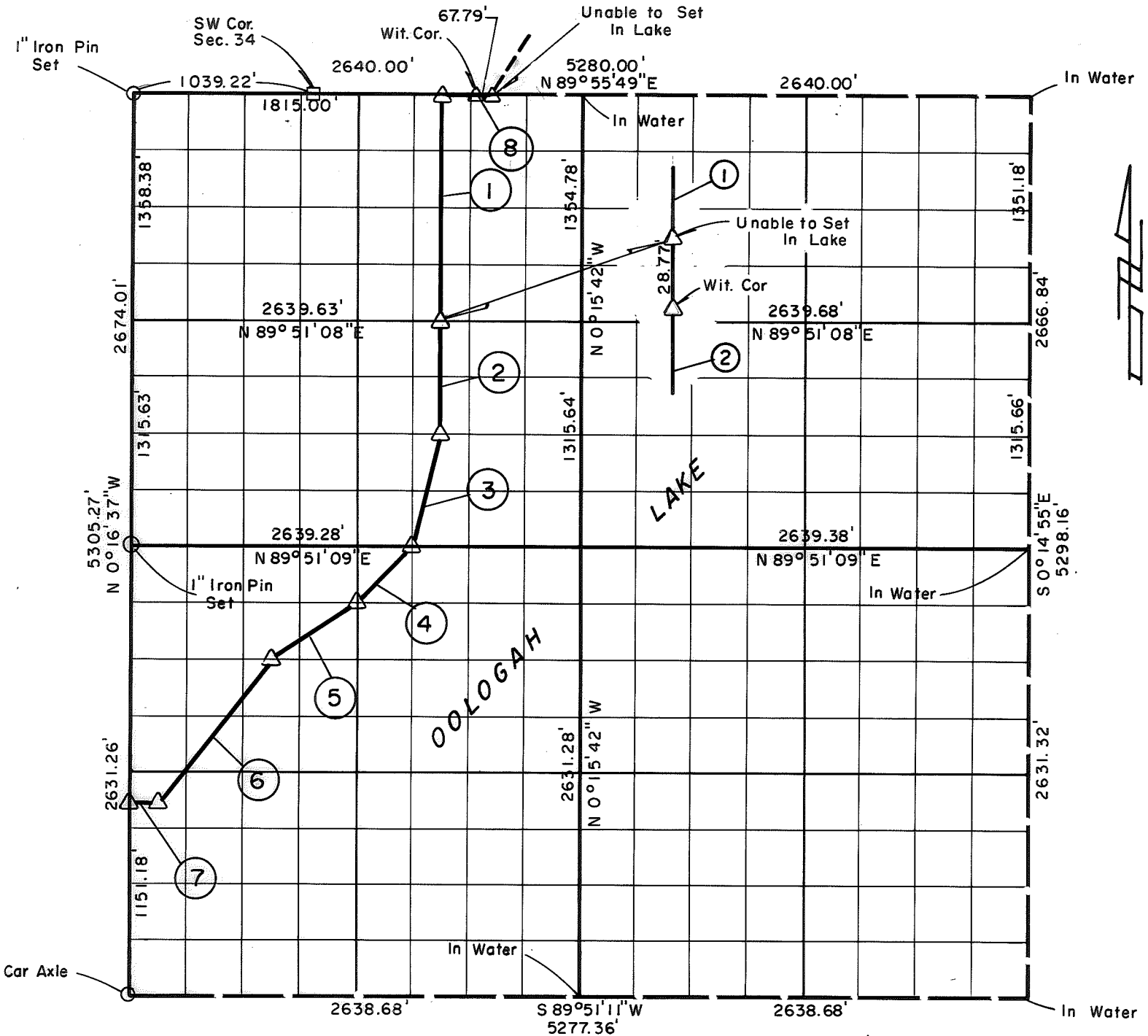


**PARTIAL BOUNDARY SURVEYS**  
**OOLOGAH LAKE, AREA "A"**  
**VERDIGRIS RIVER, OKLAHOMA**

Performed Under Contract Number DACW 56-77-C-0052

SEC. 3, T. 24 N., R. 16 E., COUNTY ROGERS



Course No.	Distance	Bearing	Course No.	Distance	Bearing
1	1355.90'	S 0° 15' 59" E			
2	657.82'	S 0° 15' 59" E			
3	677.85'	S 13° 49' 04" W			
4	465.36'	S 44° 52' 44" W			
5	593.59'	S 56° 12' 14" W			
6	1053.09'	S 38° 31' 03" W			
7	16493'	S 89° 51' 10" W			
* 8	214.22'	N 89° 55' 49" E			

**JIMMIE DALE NICKLE**  
 Registered Land Surveyor No. 78  
 State of Oklahoma

Field Book No. O-280 Date 1977  
**CRAIG & KEITHLINE**  
 Consulting Engineers  
 For  
**U.S. ARMY ENGINEER DISTRICT, TULSA**  
**CORPS OF ENGINEERS**

Δ MONUMENT  
 □ ORIGINAL CORNER  
 ○ IRON PIN  
 \* REVISED: 12-19-77

*Jimmie Dale Nickle*  
 Jimmie Dale Nickle  
 Registered Land Surveyor No. 78