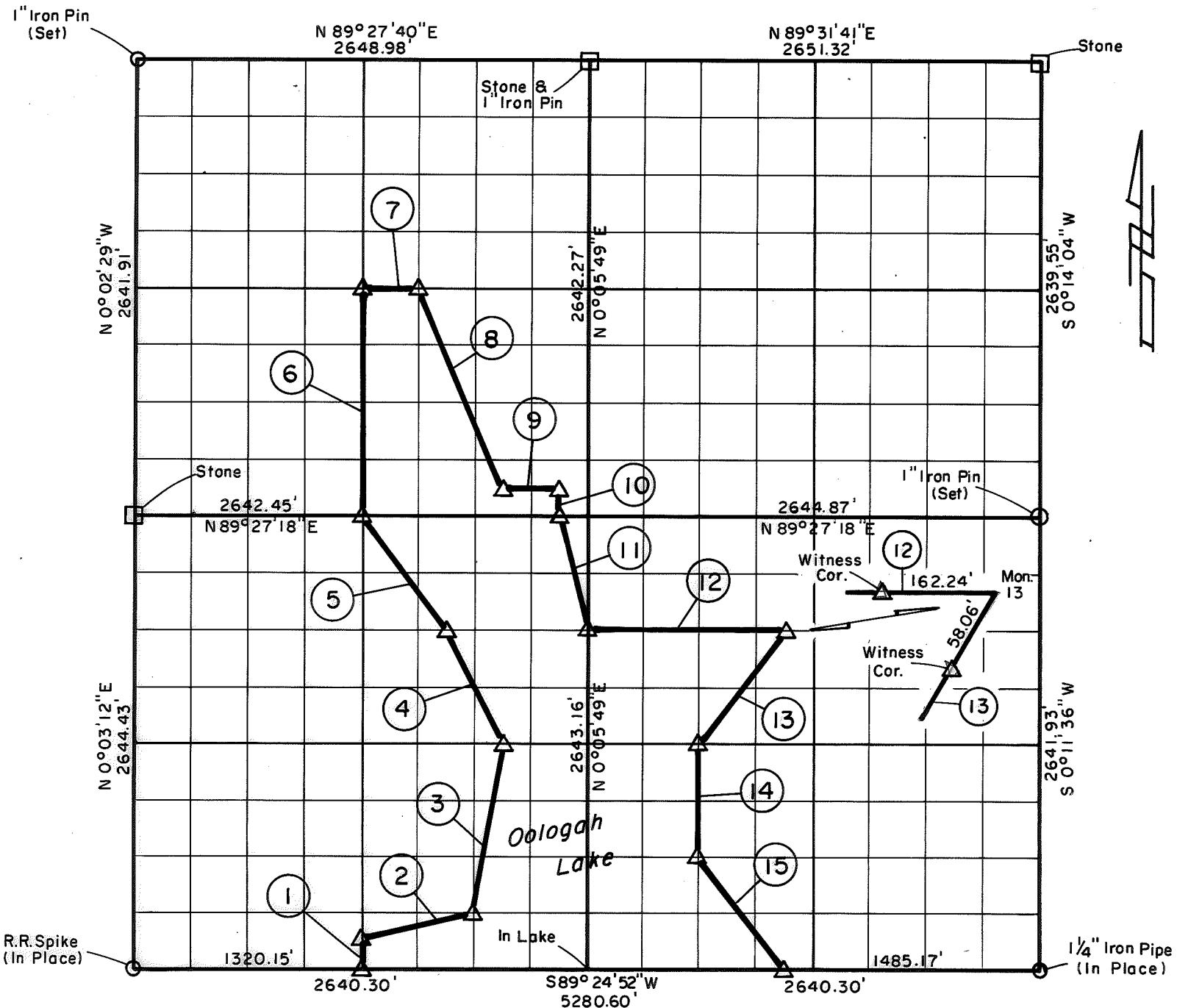


PARTIAL BOUNDARY SURVEYS
OOLOGAH LAKE, AREA "A"
VERDIGRIS RIVER, OKLAHOMA

Performed Under Contract Number DACW 56-77-C-0052

SEC. 8 , T. 24 N. , R. 16 E. , COUNTY ROGERS



Course No.	Distance	Bearing	Course No.	Distance	Bearing
1	165.25'	N 0° 04' 27" E	14	660.69'	S 0° 07' 17" W
2	682.34'	N 75° 24' 40" E	15	820.74'	S 36° 58' 29" E
3	1006.82'	N 9° 31' 21" E			
4	735.47'	N 26° 35' 27" W			
5	821.65'	N 37° 00' 00" W			
6	1321.12'	N 0° 01' 37" E			
7	330.71'	N 89° 27' 29" E			
8	1253.02'	S 23° 14' 59" E			
9	330.36'	N 89° 27' 18" E			
10	165.14'	S 0° 05' 18" W			
11	679.32'	S 13° 58' 21" E			
12	1156.64'	N 89° 26' 48" E			
13	830.64'	S 36° 45' 28" W			

CERTIFICATE OF SURVEY

I Hereby Certify That The Above Plat is a True and Correct Representation of The Survey Made in Sec. 8 T. 24 N., R. 16 E.

Jimie Dale Nickle
 Jimmie Dale Nickle
 Registered Land Surveyor No. 78

Field Book No. 0-282 Date 1977

CRAIG & KEITHLINE
 Consulting Engineers

For
U.S. ARMY ENGINEER DISTRICT, TULSA
CORPS OF ENGINEERS

Δ MONUMENT
 □ ORIGINAL CORNER
 ○ IRON PIN