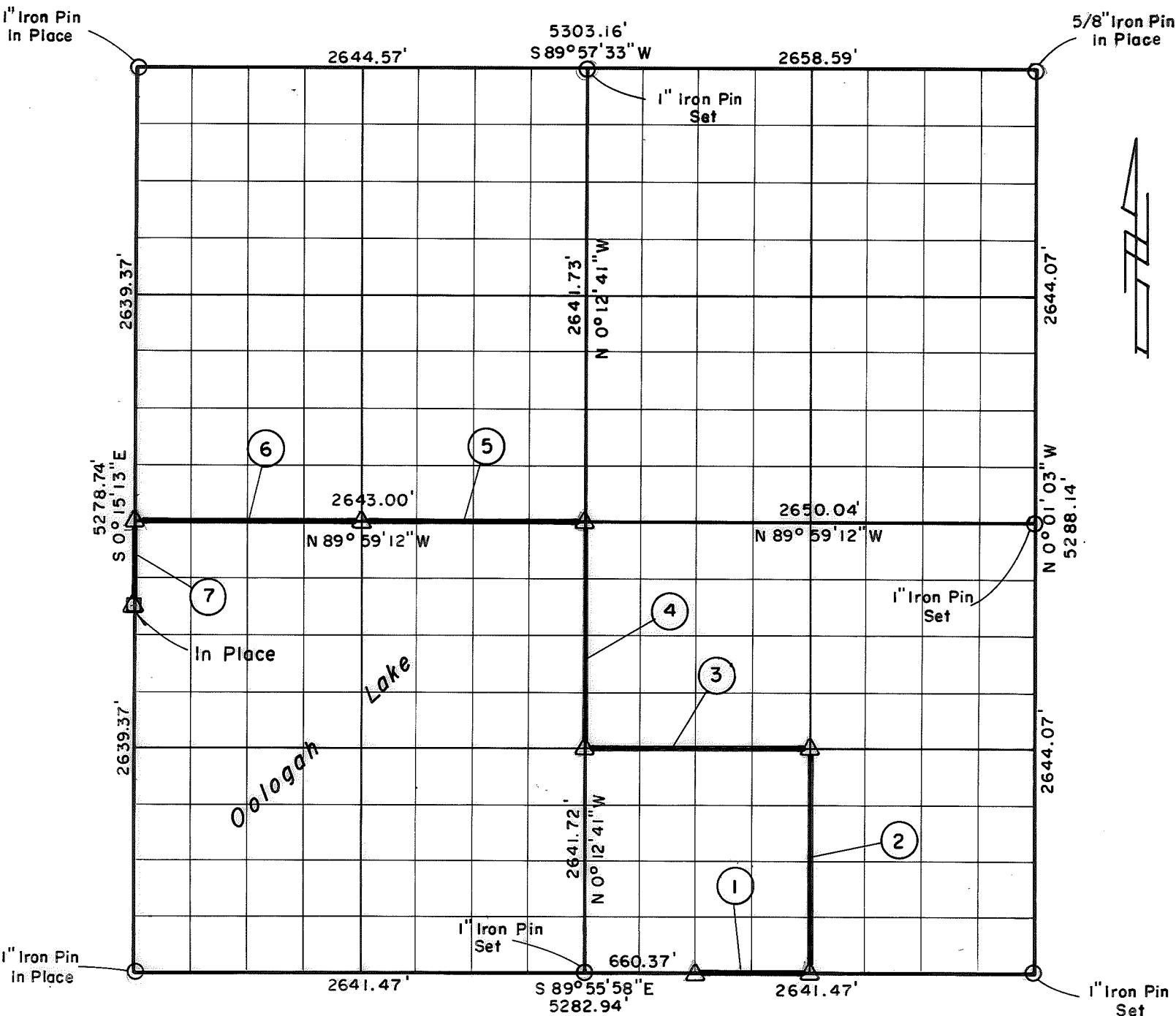


PARTIAL BOUNDARY SURVEYS  
 OOLOGAH LAKE, AREA "A"  
 VERDIGRIS RIVER, OKLAHOMA

Performed Under Contract Number DACW 56-76-C-0120

SEC. 29 , T. 24N , R. 17E , COUNTY ROGERS



Course No.	Distance	Bearing	Course No.	Distance	Bearing
1	660.37'	S 89° 55' 58" E			
2	1321.45'	N 0° 06' 52" W			
3	1322.88'	N 89° 57' 35" W			
4	1320.86'	N 0° 12' 41" W			
5	1321.50'	N 89° 59' 12" W			
6	1321.50'	N 89° 59' 12" W			
7	494.88'	S 0° 15' 13" E			

CERTIFICATE OF SURVEY      Field Book No. 0-265      Date 1976

**CRAIG & KEITHLINE**  
 Consulting Engineers

I Hereby Certify That The  
 Above Plat is a True and  
 Correct Representation of  
 The Survey Made in Sec. 29 U.S. ARMY ENGINEER DISTRICT, TULSA  
 T. 24N , R. 17E

Δ MONUMENT  
 □ ORIGINAL CORNER  
 ○ IRON PIN

*Charles R. Keithline*  
 CHARLES R. KEITHLINE  
 Registered Land Surveyor No. 517