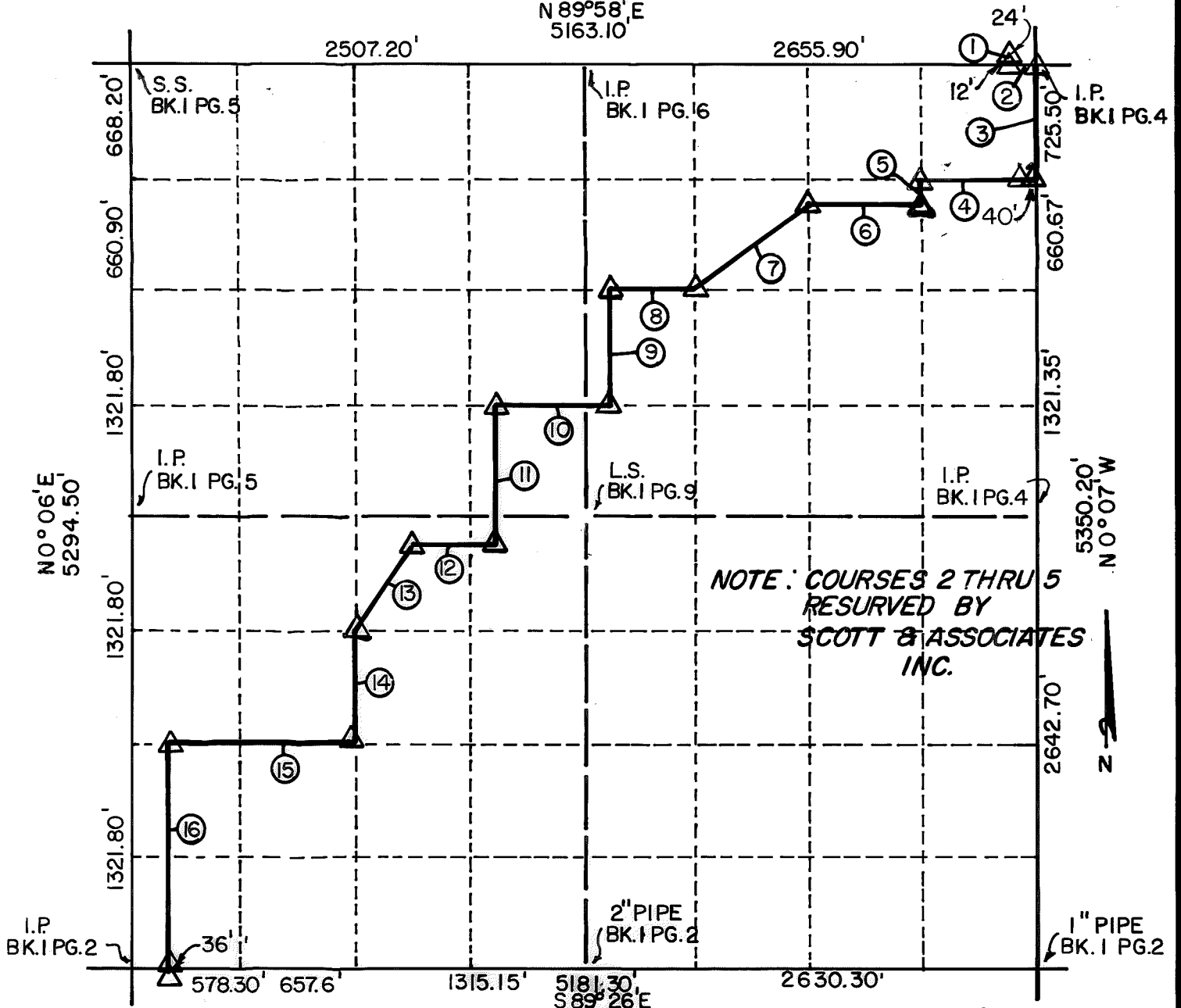


BOUNDARY LINE DELINEATION & REMONUMENTATION SURVEY PLAT

OOLOGAH LAKE, OKLAHOMA
SEC. 6, T-24-N R-17-E COUNTY

ROGERS

PARCEL NO. _____ Performed Under Contract No. DACA 56-86-D-0041



Course No.	Distance	Bearing	Course No.	Distance	Bearing
1	36.00'	S 00°07'00" E	14	660.85'	S 00°31'00" E
2	156.00'	N 89°58'00" E	15	1092.38'	N 89°25'30" W
3	725.50'	S 00°07'00" E	16	1371.80'	S 00°06'00" W
4	663.18'	N 89°24'00" W			
5	165.18'	S 00°11'00" E			
6	663.17'	N 89°24'00" W			
7	821.18'	S 53°30'00" W			
8	496.77'	N 89°24'20" W			
9	660.80'	S 00°50'22" E			
10	661.57'	N 89°24'40" W			
11	826.00'	S 00°26'00" E			
12	495.43'	N 89°25'00" W			
13	590.26'	S 33°31'00" W			

CERTIFICATE OF SURVEY
 I Hereby Certify that the Above Plat
 is a True and Correct Representation
 of the Survey.

BASIL E. SCOTT JR. L.S. 545

Field Book No. 0-309 Date 9-23-86
SCOTT & ASSOCIATES INC.
LAND SURVEYORS
 U.S. ARMY CORPS OF ENGINEERS
 TULSA DISTRICT

— LEGEND —

- △ MONUMENT
- ORIGINAL CORNER
- IRON PIN W/ CAP