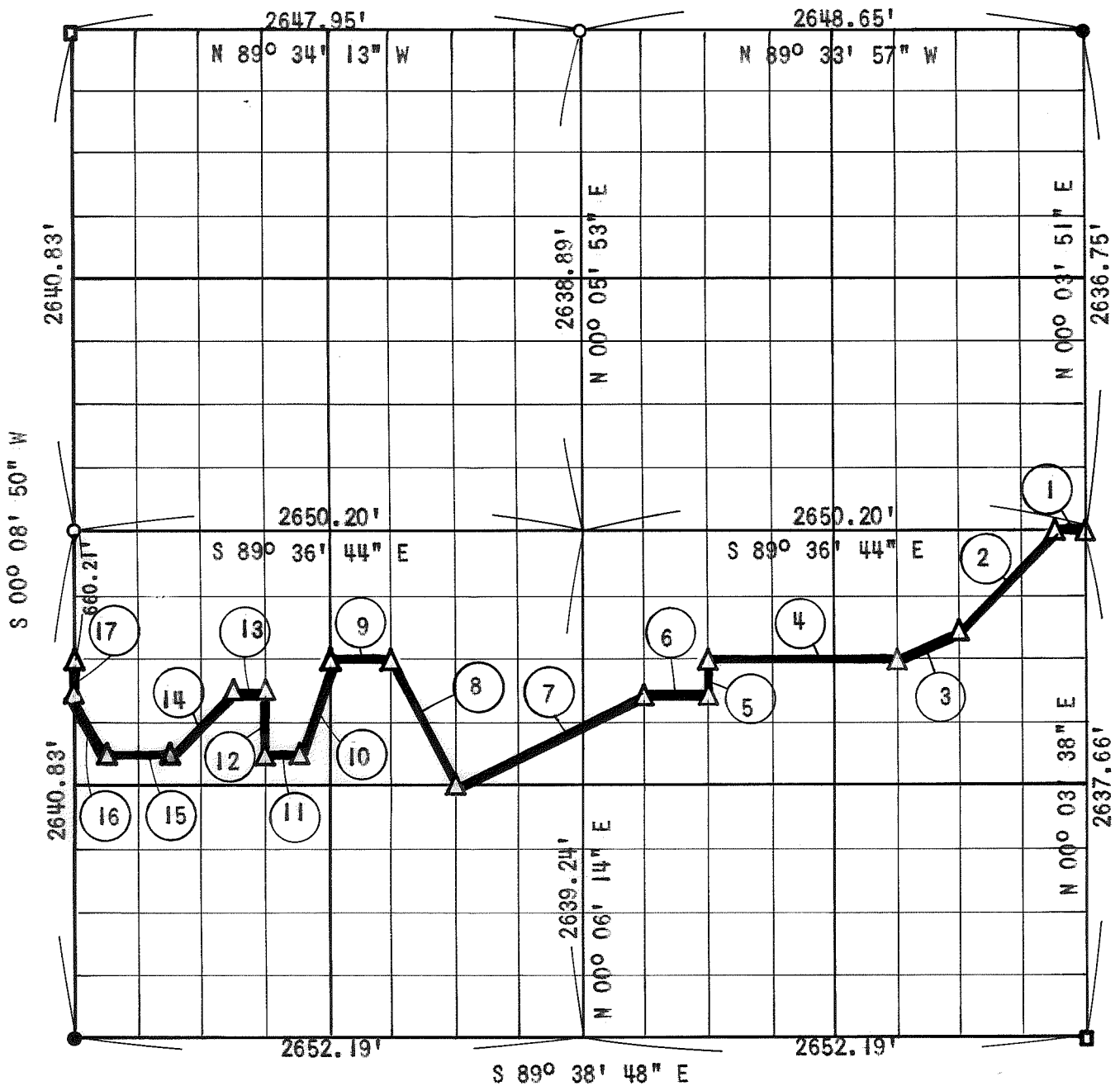


PARTIAL BOUNDARY SURVEY
 OOLOGAH RESERVOIR
 VERDIGRAS RIVER, OKLAHOMA

Performed Under Contract Number DACW 56-70-C-0149

SEC. 10 T25N R16E

NOWATA COUNTY



Course No.	Distance	Bearing	Course No.	Distance	Bearing
1	165.64'	N 89° 36' 44" W	10	521.32'	S 18° 39' 26" W
2	699.19'	S 45° 21' 43" W	11	165.69'	N 89° 37' 39" W
3	369.30'	S 63° 51' 45" W	12	330.03'	N 00° 07' 52" E
4	993.71'	N 89° 37' 15" W	13	165.68'	N 89° 37' 23" W
5	164.93'	S 00° 05' 35" W	14	466.72'	S 45° 22' 12" W
6	331.35'	N 89° 37' 23" W	15	331.38'	N 89° 37' 39" W
7	1108.43'	S 63° 51' 25" W	16	369.94'	N 26° 27' 40" W
8	739.79'	N 26° 29' 34" W	17	165.05'	N 00° 08' 50" E
9	331.34'	N 89° 37' 15" W			

Field Book Number 0-228

Date: August 7, 1970

CERTIFICATE OF SURVEY

I HEREBY CERTIFY THAT THE ABOVE PLAT IS A TRUE AND CORRECT REPRESENTATION OF THE SURVEY MADE IN SEC. 10 T25N R16E NOWATA COUNTY

SULLIVAN AND GILBERT, INC.

Under the Supervision of
 U.S. ARMY ENGINEER DISTRICT, TULSA
 CORPS OF ENGINEERS

LEGEND

- Original Corner
- Iron Pin
- 2" Iron Pipe
- △ Monument

William A. Gilbert
 REGISTERED PROFESSIONAL ENGINEER