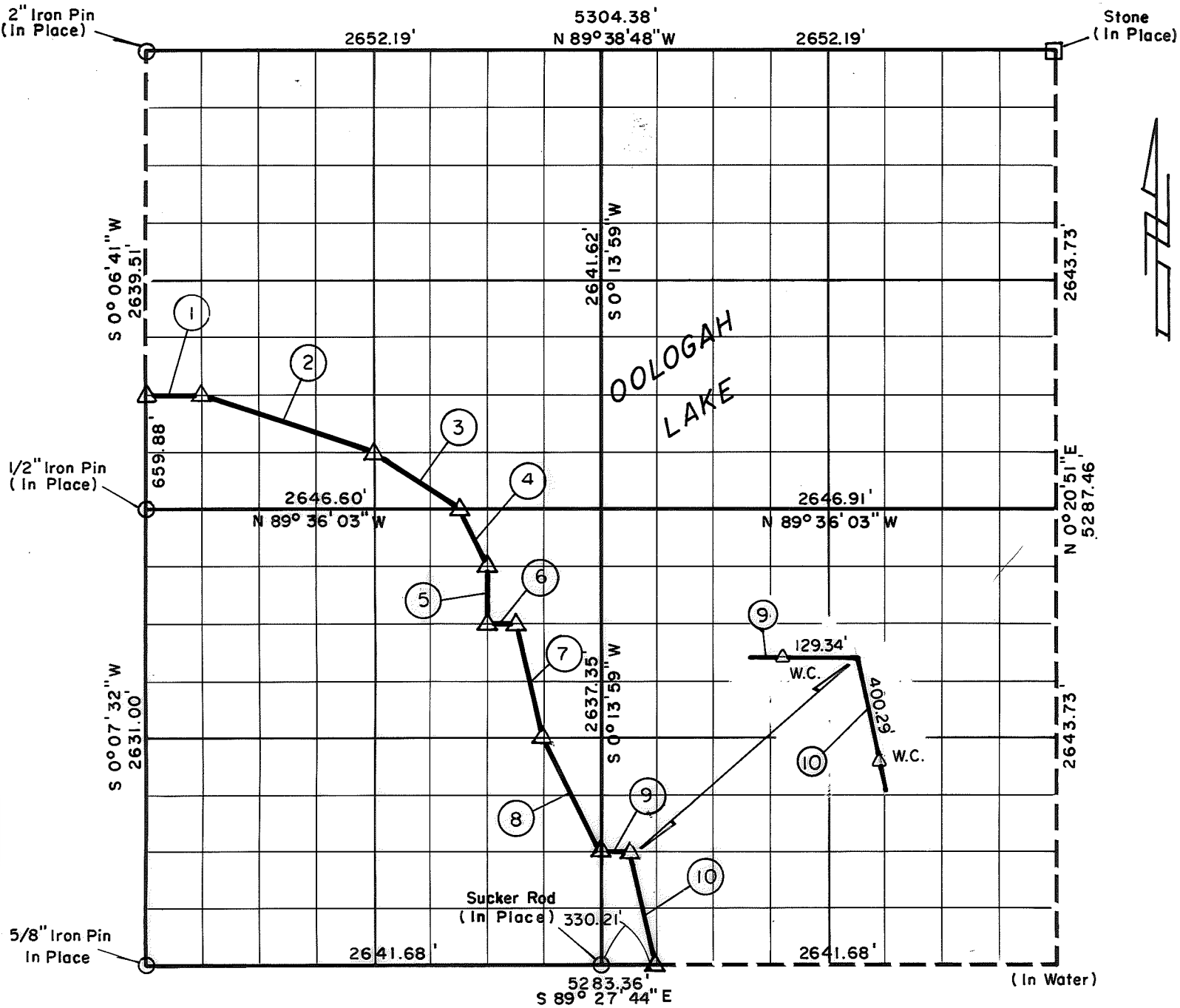


PARTIAL BOUNDARY SURVEYS
Oologah Lake, Area "A"
Verdigris River, Oklahoma
 Performed Under Contract Number DACW 56-76-C-0120

SEC. 15 , T. 25 N , R. 16 E , COUNTY NOWATA

North Line Taken From Sec. 10, T25N, R16E
 (Sullivan & Gilbert)



Course No.	Distance	Bearing	Course No.	Distance	Bearing
1	331.00'	S 89° 36' 44" E			
2	1047.60'	S 71° 14' 50" E			
3	597.08'	S 56° 02' 27" E			
4	369.16'	S 26° 24' 49" E			
5	329.47'	S 0° 12' 22" W			
6	165.34'	S 89° 33' 59" E			
7	680.16'	S 13° 50' 57" E			
8	738.76'	S 26° 20' 35" E			
9	165.19'	S 89° 29' 49" E			
10	680.62'	S 13° 47' 54" E			

Field Book No. 0 - 267 Date 1976

CERTIFICATE OF SURVEY

CRAIG & KEITHLINE
 Consulting Engineers

I Hereby Certify That The Above Plat is a True and Correct Representation of The Survey Made in Sec. 15 T. 25 N , R. 16 E U.S. ARMY ENGINEER DISTRICT, TULSA CORPS OF ENGINEERS

Δ MONUMENT
 □ ORIGINAL CORNER
 ○ IRON PIN

Charles R. Keithline SHEET 1 of 1

CHARLES R. KEITHLINE
 Registered Land Surveyor No. 517