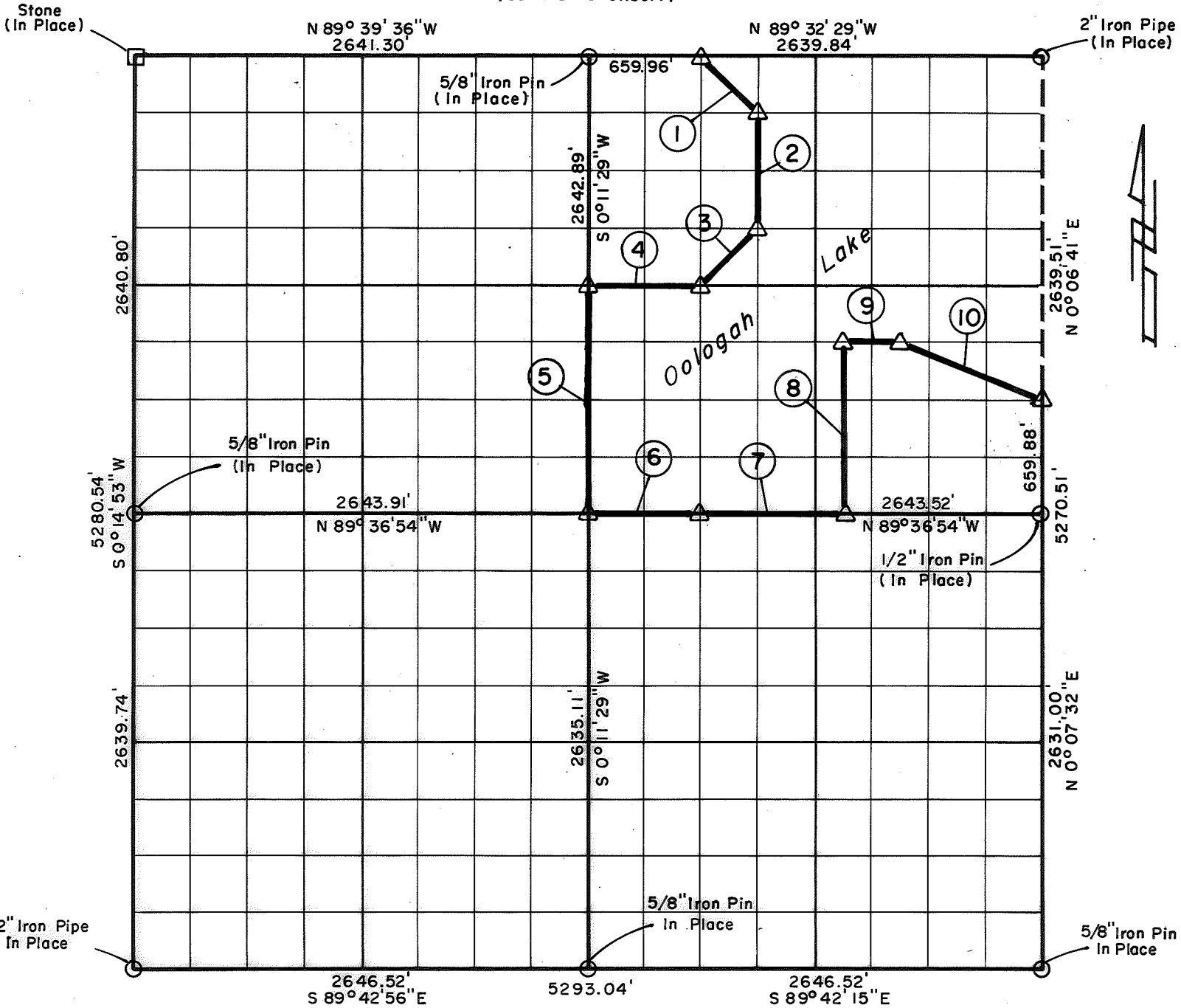


PARTIAL BOUNDARY SURVEYS
OOLOGAH LAKE, AREA "A"
VERDIGRIS RIVER, OKLAHOMA

Performed Under Contract Number DACW 56-76-C-0120

SEC. 16 , T. 25 N , R. 16 E , COUNTY NOWATA

North Line Taken From Sec. 9, T 25 N, R 16 E
(Sullivan & Gilbert)



Course No.	Distance	Bearing	Course No.	Distance	Bearing
1	468.03'	S 44° 40' 16" E			
2	660.41'	S 0° 09' 41" W			
3	465.92'	S 45° 17' 32" W			
4	660.42'	N 89° 34' 41" W			
5	1321.45'	S 0° 11' 29" W			
6	660.88'	S 89° 36' 54" E			
7	826.10'	S 89° 36' 54" E			
8	990.37'	N 0° 08' 47" E			
9	330.27'	S 89° 35' 14" E			
10	890.77'	S 67° 50' 49" E			

Field Book No. 0-266 Date 1976

CERTIFICATE OF SURVEY

I Hereby Certify That The
Above Plat is a True and
Correct Representation of
The Survey Made in Sec. 16

T. 25 N, R. 16 E

CRAIG & KEITHLINE
Consulting Engineers

For

U.S. ARMY ENGINEER DISTRICT, TULSA
CORPS OF ENGINEERS

▲ MONUMENT
□ ORIGINAL CORNER
○ IRON PIN

Charles R. Keithline
CHARLES R. KEITHLINE
Registered Land Surveyor No. 517

SHEET 1 of 1