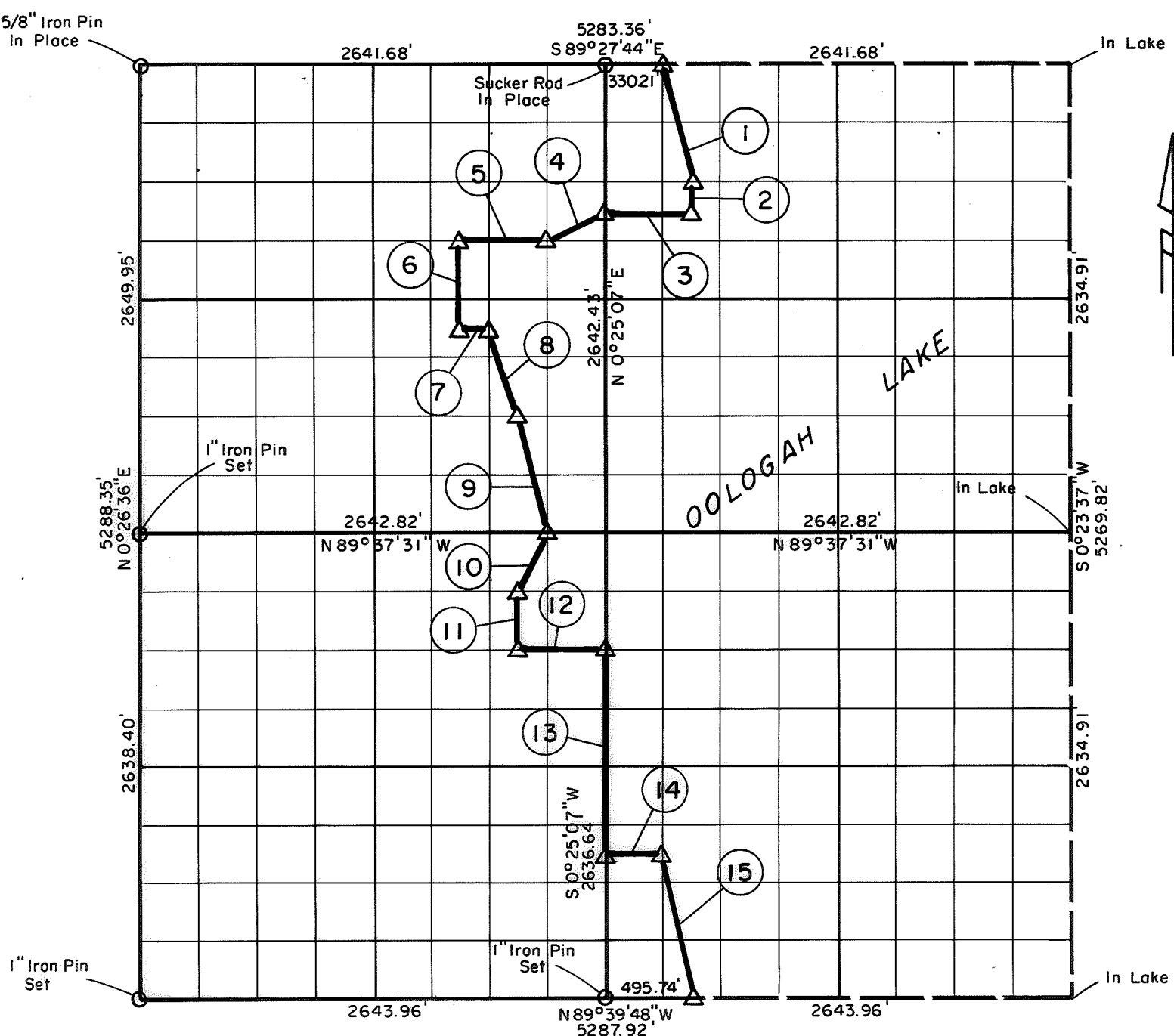


PARTIAL BOUNDARY SURVEYS
OOLOGAH LAKE, AREA "A"
VERDIGRIS RIVER, OKLAHOMA

Performed Under Contract Number DACW 56-77-C-0052

SEC. 22 , T. 25 N. , R. 16 E. , COUNTY NOWATA



Course No.	Distance	Bearing	Course No.	Distance	Bearing
1	680.93'	S 13° 37' 06" E	14	330.44'	S 89° 39' 05" E
2	165.06'	S 0° 24' 50" W	15	840.06'	S 10° 55' 45" E
3	495.38'	N 89° 30' 48" W			
4	369.10'	S 63° 53' 48" W			
5	495.40'	N 89° 31' 24" W			
6	495.90'	S 0° 25' 35" W			
7	165.15'	S 89° 33' 14" E			
8	522.57'	S 17° 59' 58" E			
9	681.15'	S 13° 36' 38" E			
10	368.82'	S 27° 01' 45" W			
11	329.62'	S 0° 25' 24" W			
12	495.59'	S 89° 38' 05" E			
13	1153.54'	S 0° 25' 07" W			

CERTIFICATE OF SURVEY

I Hereby Certify That The Above Plat Is A True and Correct Representation of The Survey Made in Sec. 22

T. 25 N., R. 16 E.

Jimmie Dale Nickle
 Jimmie Dale Nickle

Field Book No. 0-286 Date 1977

CRAIG & KEITHLINE
 Consulting Engineers

For

U.S. ARMY ENGINEER DISTRICT, TULSA
 CORPS OF ENGINEERS

△ MONUMENT
 □ ORIGINAL CORNER
 ○ IRON PIN