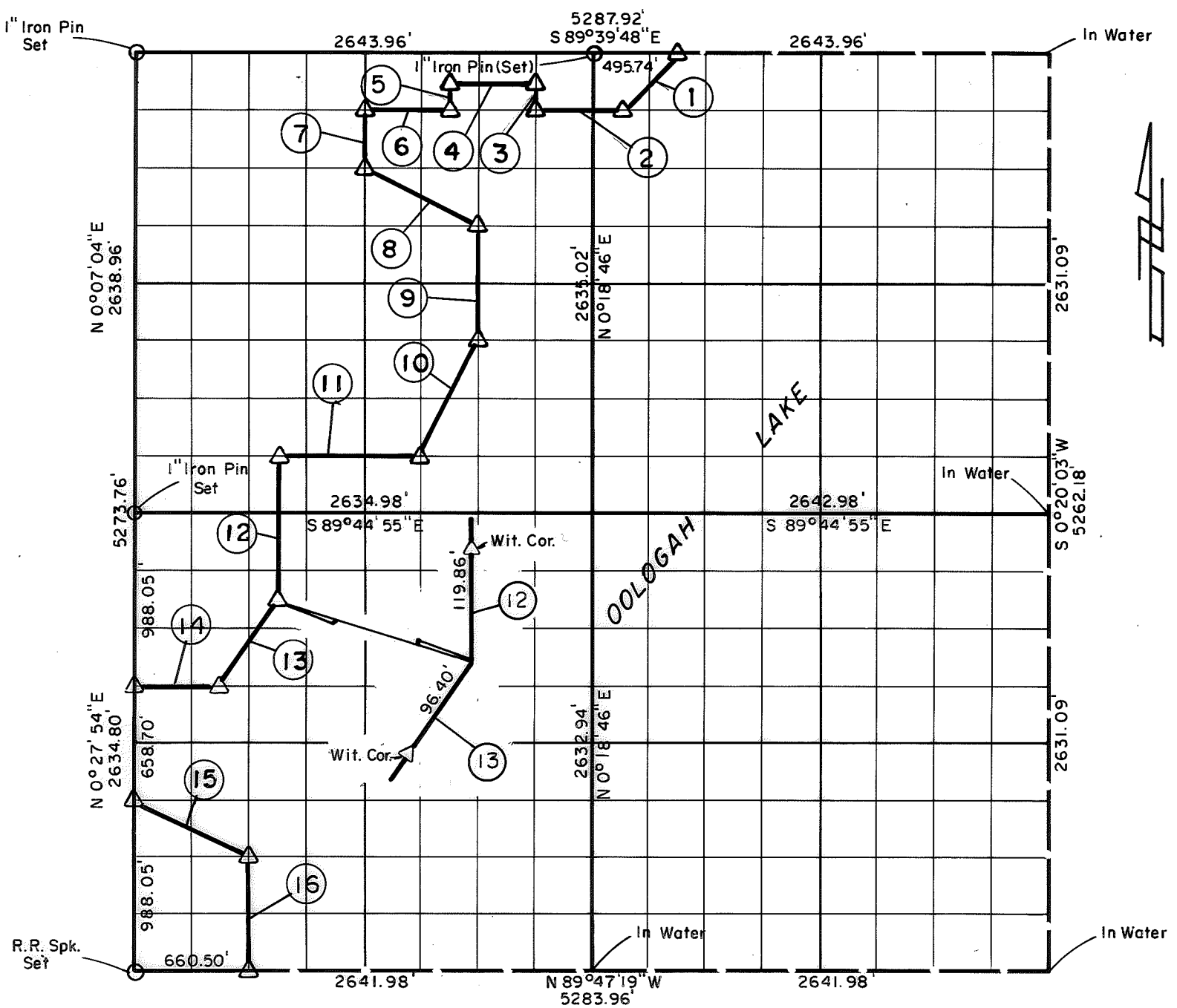


PARTIAL BOUNDARY SURVEYS
OOLOGAH LAKE, AREA "A"
VERDIGRIS RIVER, OKLAHOMA

Performed Under Contract Number DACW 56-77-C-0052

SEC. 27 , T. 25 N., R. 16 E., COUNTY NOWATA



Course No.	Distance	Bearing	Course No.	Distance	Bearing
1	466.49'	S 45° 25' 30" W	14	494.55'	N 89° 45' 49" W
2	495.59'	N 89° 40' 26" W	15	736.41'	S 63° 12' 44" E
3	164.72'	N 0° 17' 18" E	16	658.58'	S 0° 25' 37" W
4	495.64'	N 89° 40' 07" W			
5	164.77'	S 0° 15' 06" W			
6	495.53'	N 89° 40' 26" W			
7	329.62'	S 0° 12' 55" W			
8	738.33'	S 63° 10' 46" E			
9	659.00'	S 0° 15' 50" W			
10	736.80'	S 26° 49' 46" W			
11	823.78'	N 89° 44' 16" W			
12	823.63'	S 0° 19' 19" W			
13	594.71'	S 34° 05' 08" W			

Field Book No. 0-287 Date 77

CRAIG & KEITHLINE
 Consulting Engineers

For

U.S. ARMY ENGINEER DISTRICT, TULSA
CORPS OF ENGINEERS

Δ MONUMENT
 □ ORIGINAL CORNER
 ○ IRON PIN

SHEET 1 of 1

CERTIFICATE OF SURVEY
 I Herby Certify That The
 Above Plat is a True and
 Correct Representation of
 The Survey Made in Sec. 27
 T. 25 N. R. 16 E.

Jimmie Dale Nickle
 Jimmie Dale Nickle
 Registered Land Surveyor No. 78